

75 KENMARE

NOLITA • NEW YORK



THE OPPORTUNITY

Unique opportunity to lease the last remaining space and join Undefeated's first East Coast location, The M Jeweler's first store and Bondi Sushi at 75 Kenmare Street. Situated in the heart of Nolita eclectic tapestry of boutiques, restaurants and nightlife. If it's happening, it's happening here.



OUR TENANTS



BONDI SUSHI



THE M JEWELERS



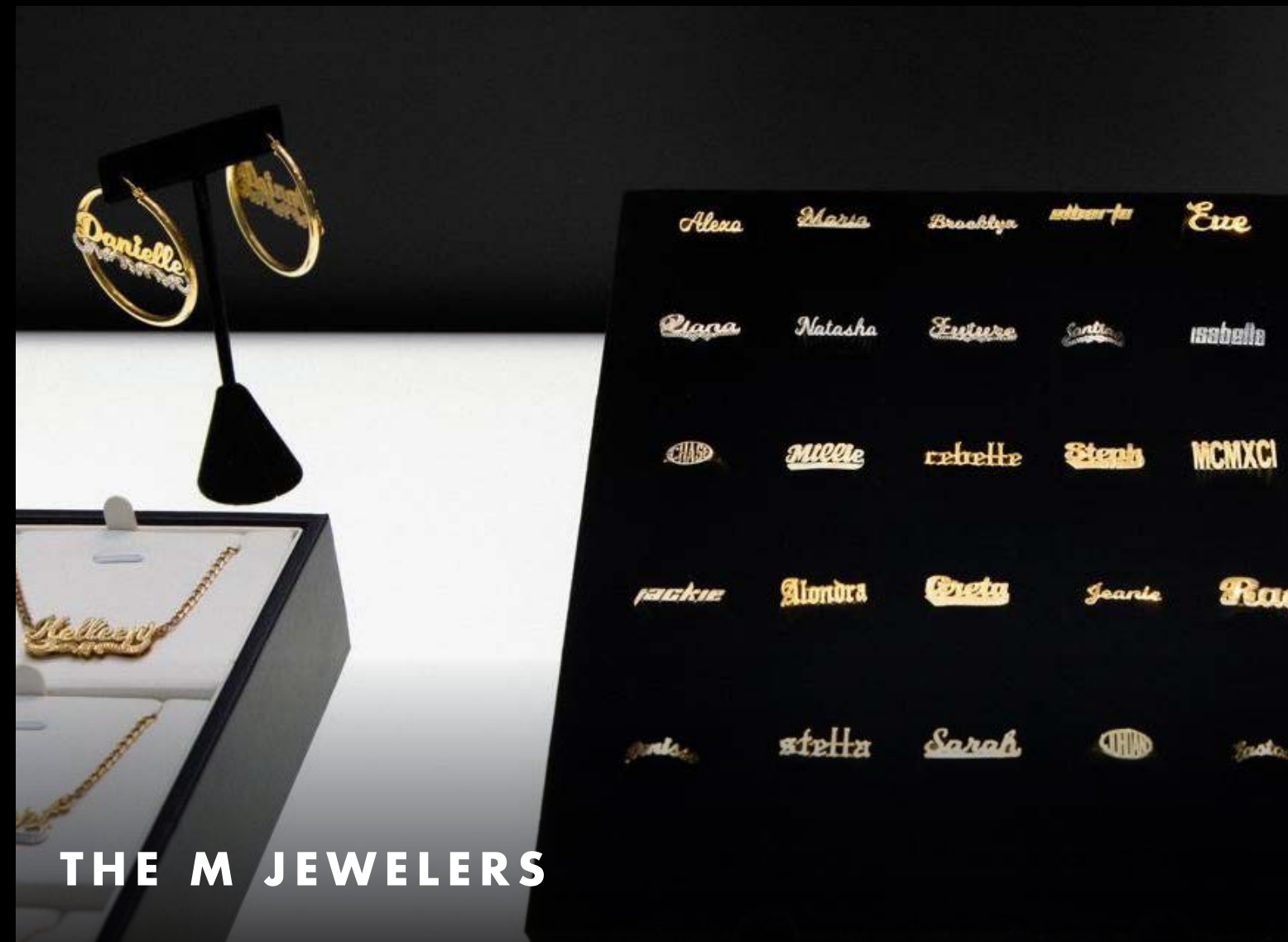
BONDI SUSHI



BONDI SUSHI



UNDEFEATED



THE M JEWELERS



UNDEFEATED

SPACE DETAILS

APPROXIMATE SIZE

SCENARIO 1

Space A: 2,136 SF

Frontage: 37 FT

SCENARIO 2

Space A: 833 SF

Frontage: 22 FT

Space B: 1,303 SF

Frontage: 15 FT

CEILING HEIGHTS

Ground Floor: 12 FT

POSSESSION

Immediate

KEY HIGHLIGHTS

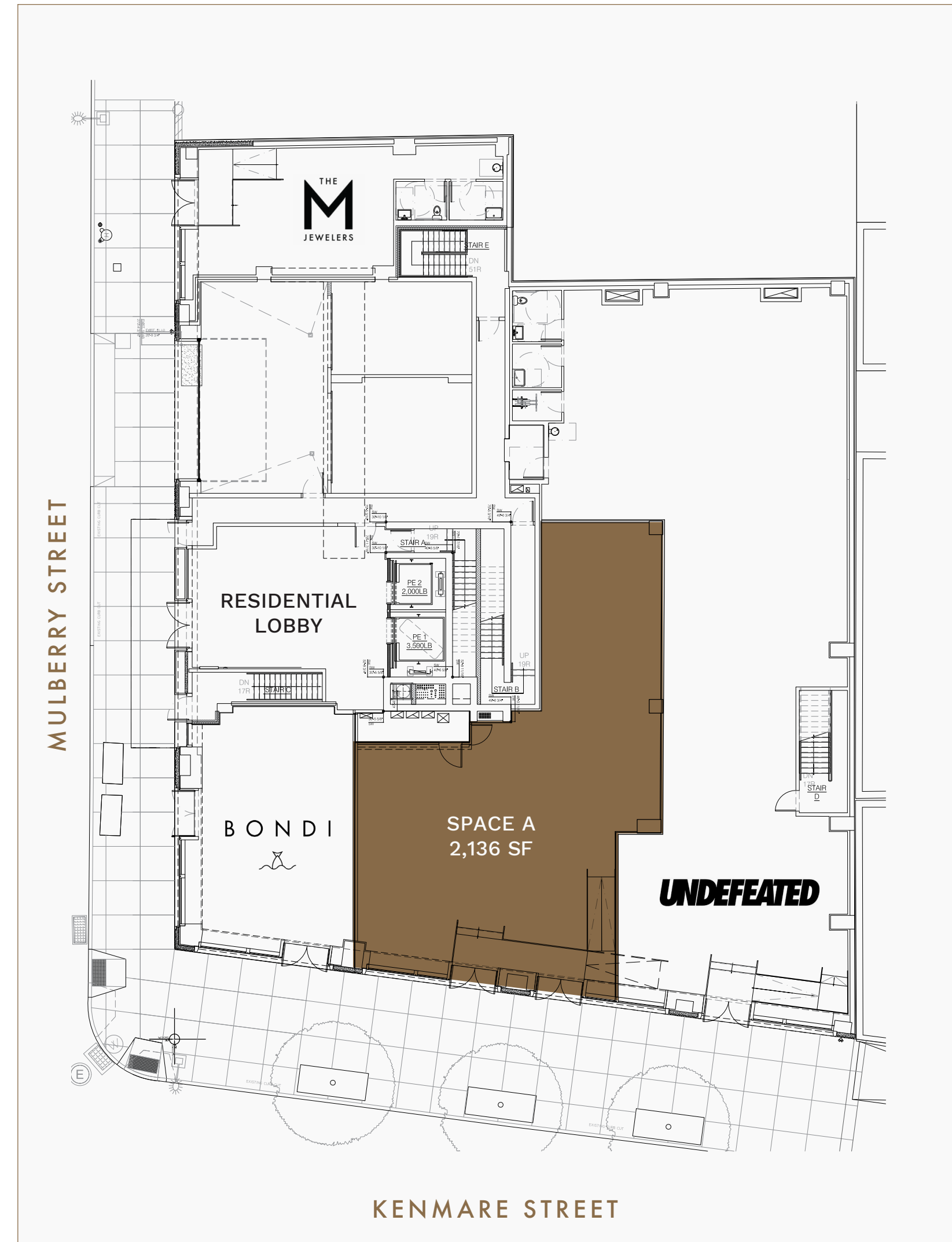
All uses considered

Space A & B are currently one open space and can be demised or leased as one

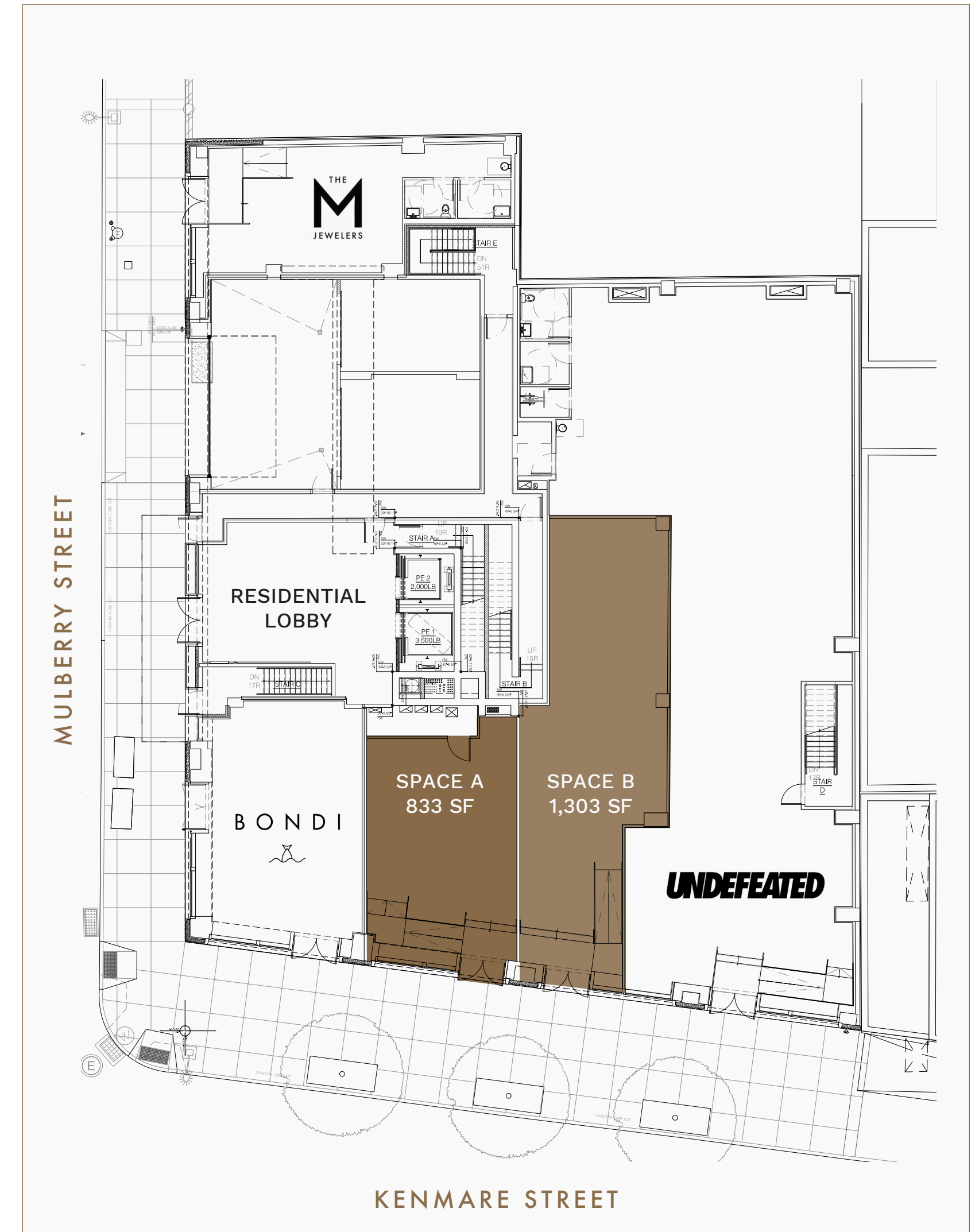
Space A & B can be connected to the existing vent for cooking

Outdoor seating possible

SCENARIO 1



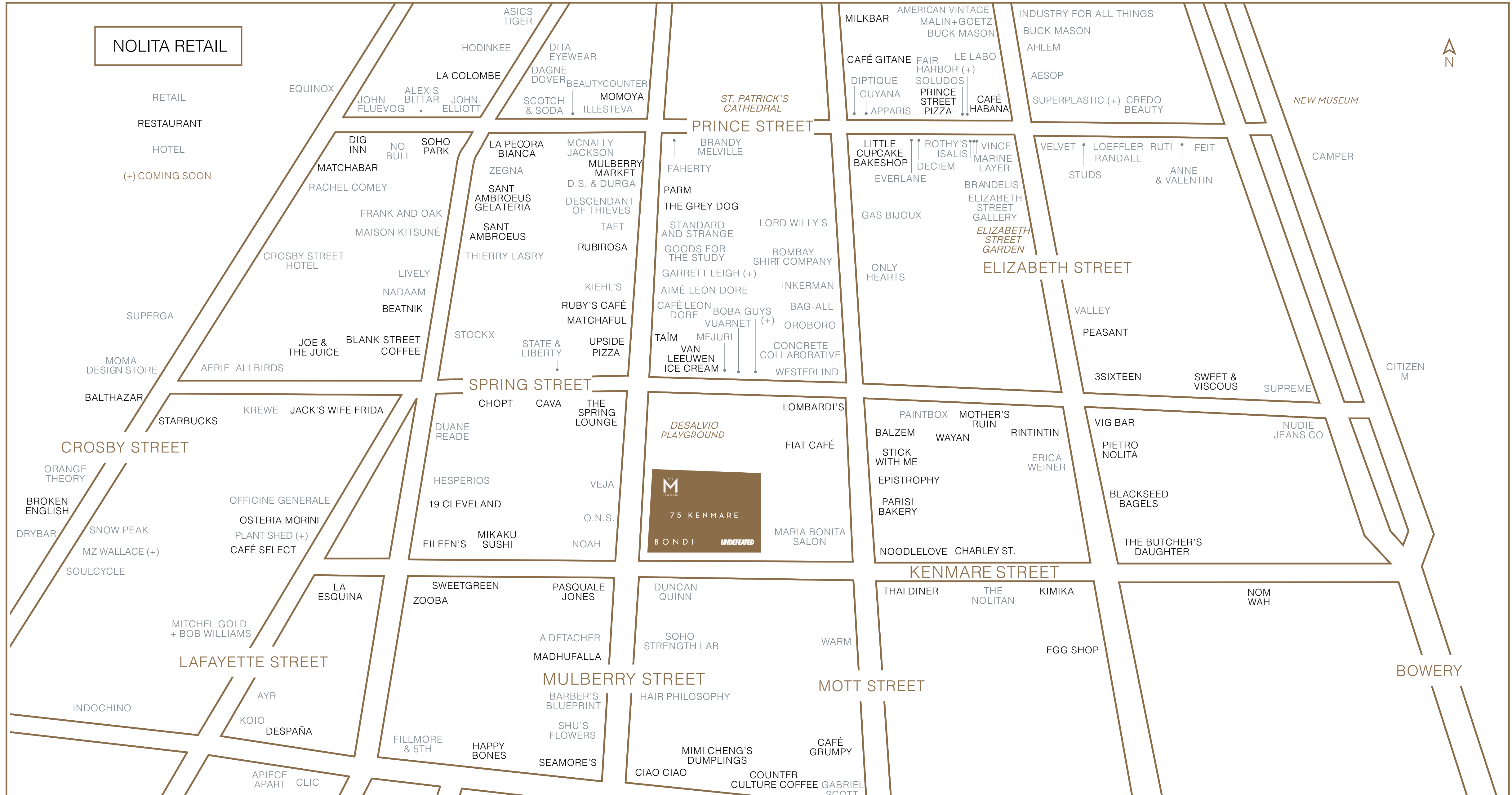
SCENARIO 2



THE NEIGHBORHOOD

Perched at the intersection of four distinct cultural epicenters – SoHo, NoHo, The Lower East Side and Little Italy – Nolita stands out as a uniquely charismatic, authentically downtown New York City neighborhood. A number of today's leading brands now count Nolita as home, including Aime Leon Dore, Noah, Veja, Mejuri, Supreme, Everlane, Le Labo, Aesop, Sezane and American Vintage. The neighborhood also has some of the city hottest restaurants and bars including Thai Diner, The Butcher's Daughter, Jack's Wife Freda, Wayan, Pasquale Jones, Sant Ambroeus, Mother's Ruin and La Esquina.





**CONTACT
EXCLUSIVE AGENTS**

masonre

masonre is a real estate brokerage and advisory firm with a strong history of leading the growth of trophy retail assets and brands in New York City, Miami, and Los Angeles.

masonre.com

David Abrams
david@masonre.com
212.222.1496

Eliot Goldschmidt
eliot@masonre.com
917.902.8039

Pierce Thompson
pierce.thompson@nmrk.com
212.916.3361

