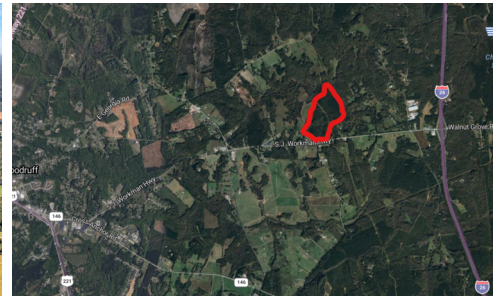
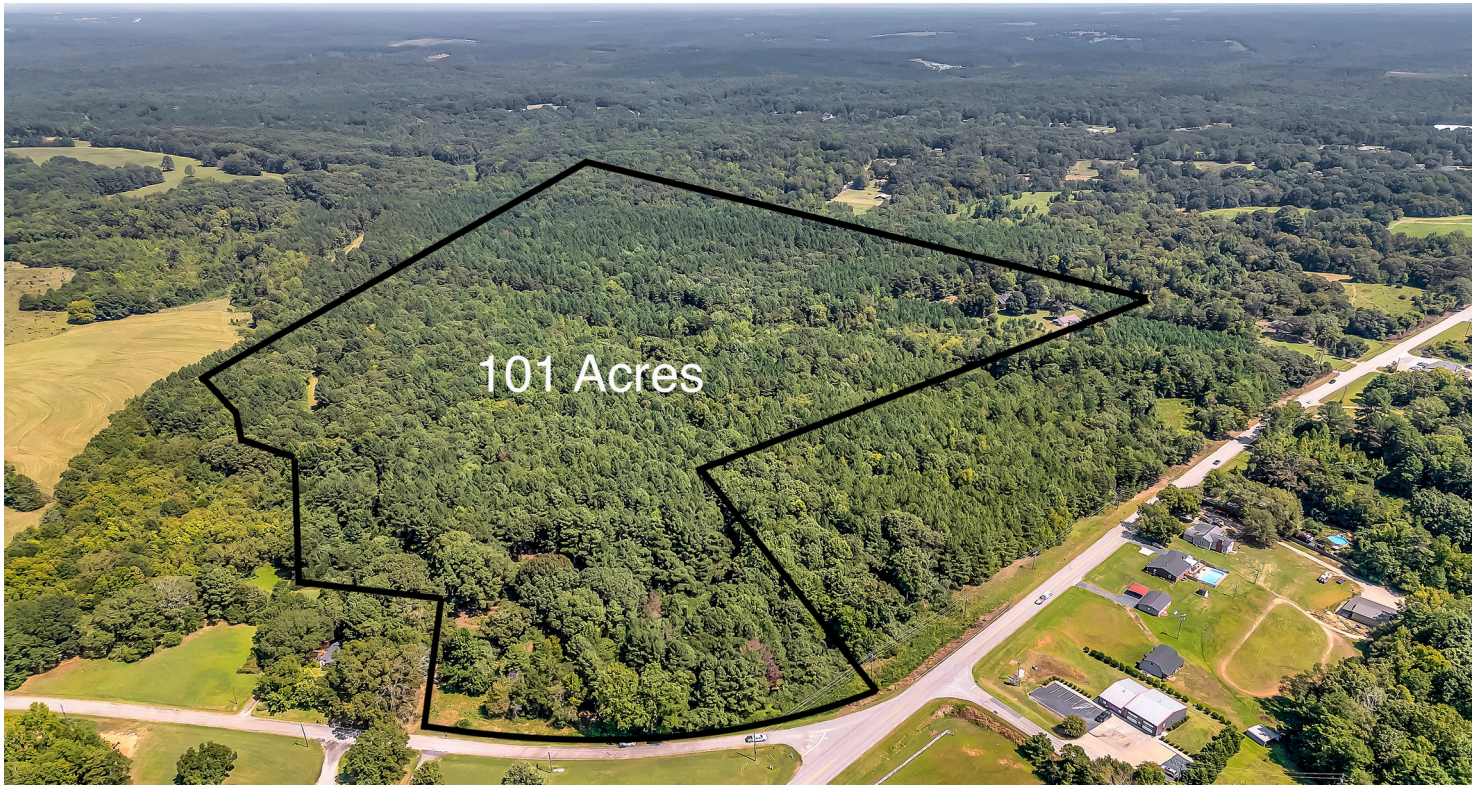


Prime Development Tract

Woodruff, SC

For Sale
\$40,000/acre



This tract is perfectly positioned in one of the fastest growing areas in the Southeast. Less than 1.25 miles from I-26 and 1.5 miles from the new Woodruff High School, this property is suitable for single and multi-family residential or industrial development.

- +/- 100 acres
- Mature Timber
- Adjacent parcels available

[Photos](#) [Video](#) [Survey](#)



Andy Cox

Commercial Real Estate Specialist
(361) 537-9069

acox@joynercommercial.com andycox.cdanjoyner.com
SC Lic #: 113803

Berkshire Hathaway HomeServices C. Dan Joyner, REALTORS
230 Buist Avenue Greenville, SC 29609

©2024 BHH Affiliates, LLC. Real Estate Brokerage Services are offered through the network member franchisees of BHH Affiliates, LLC. Most franchisees are independently owned and operated. Berkshire Hathaway HomeServices and the Berkshire Hathaway HomeServices symbol are registered service marks of Columbia Insurance Company, a Berkshire Hathaway affiliate. Information not verified or guaranteed. If your property is currently listed with a Broker, this is not intended as a solicitation. Equal Housing Opportunity.

**BERKSHIRE
HATHAWAY**
HOMESERVICES

C. DAN JOYNER,
REALTORS®

COMMERCIAL