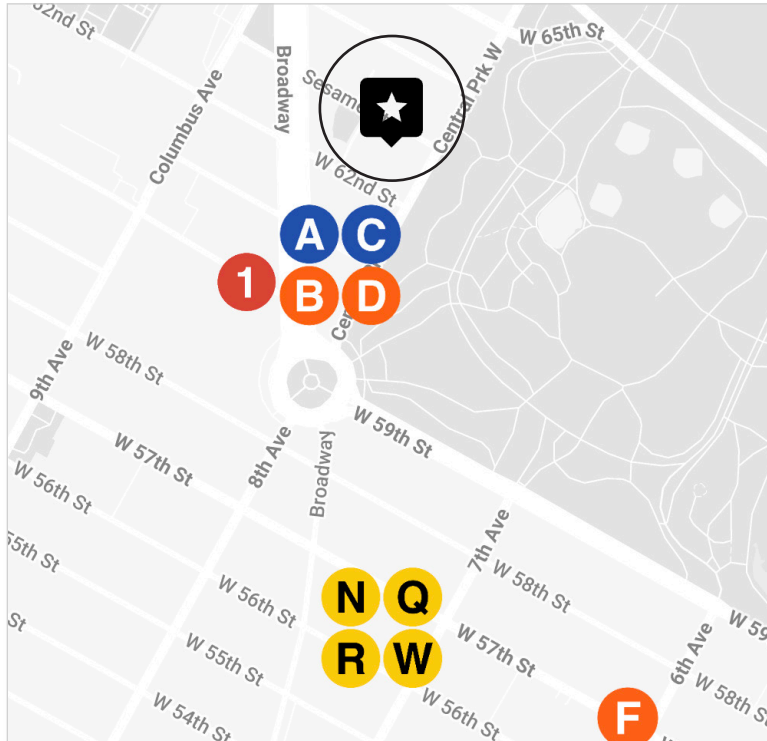


GROUND FLOOR
MEDICAL CONDO
FOR SALE

PRICE	\$1,395,000
APPROX SIZE	959 SQ FT
COMMON CHARGES	\$1,627 PER MONTH
ASSESSMENT	\$1,627 PER MONTH
FINANCING	50% MAXIMUM
TAXES	\$27,533 PER YEAR



25 CENTRAL PARK WEST, 1R
LINCOLN SQUARE, BETWEEN WEST 62ND STREET AND WEST 63RD STREET

LAYOUT

- WAITING ROOM
- RECEPTION
- THREE EXAM ROOMS
- OFFICE/CONSULT
- RESTROOM

ADDITIONAL FEATURES

- CENTRAL AIR CONDITIONING
- ADAPTABLE TO ANY MEDICAL SPECIALTY





Paul L Wexler

LICENSED ASSOCIATE
REAL ESTATE BROKER

P: 212.836.1075
E: PWexler@corcoran.com

Josef Yadgarov

LICENSED ASSOCIATE
REAL ESTATE BROKER

P: 212.836.1097
E: josef.yadgarov@corcoran.com

Kurt Herold

LICENSED ASSOCIATE
REAL ESTATE BROKER

P: 212.323.3817
E: kherold@corcoran.com

Alisia Ramlochan

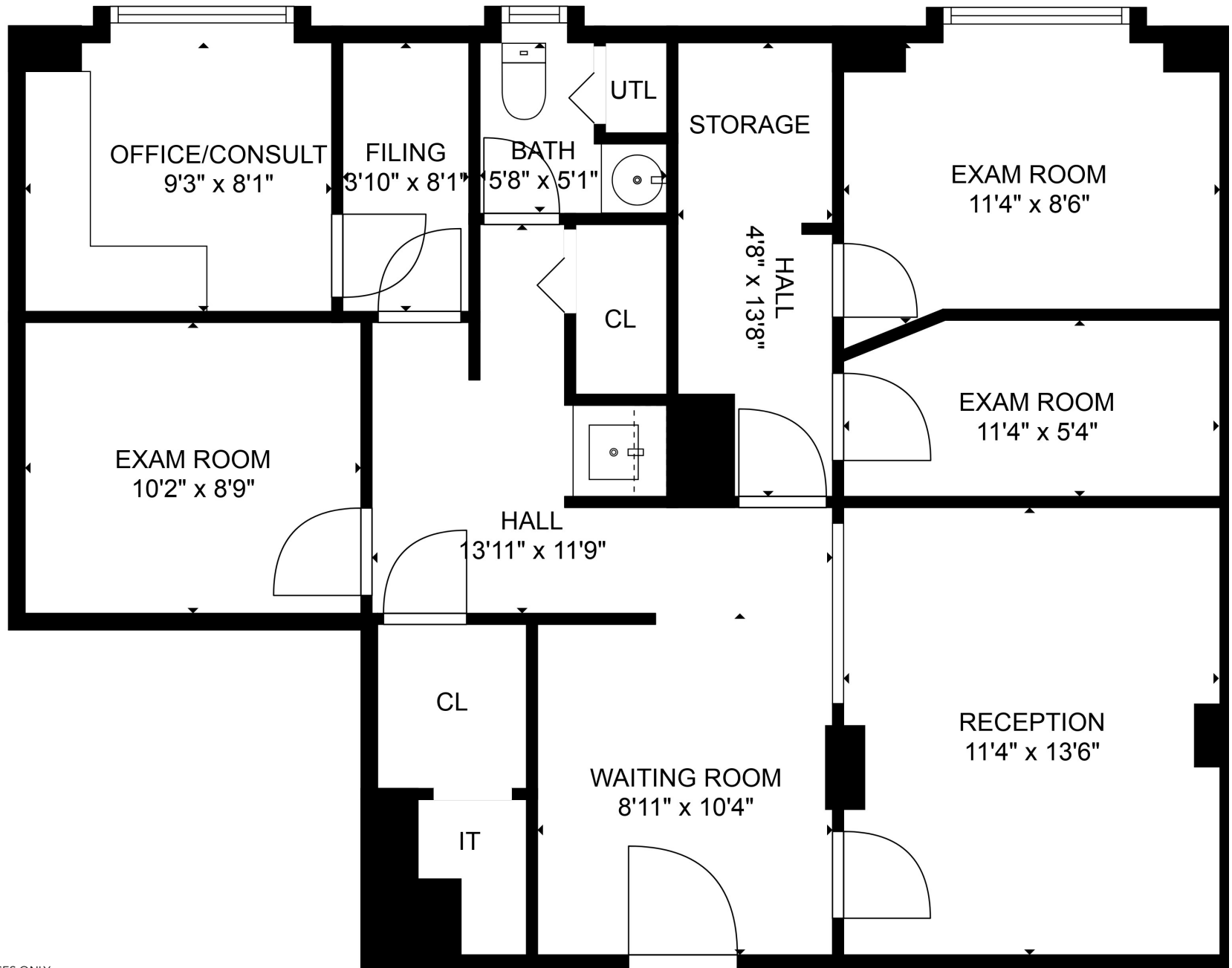
LICENSED ASSOCIATE
REAL ESTATE BROKER

P: 212.893.1450
E: alisia.ramlochan@corcoran.com

Cosmin Bitu

LICENSED REAL ESTATE
SALESPERSON

P: 917.602.5754
E: cosmin.bitu@corcoran.com



FLOOR PLAN FOR ILLUSTRATIVE PURPOSES ONLY