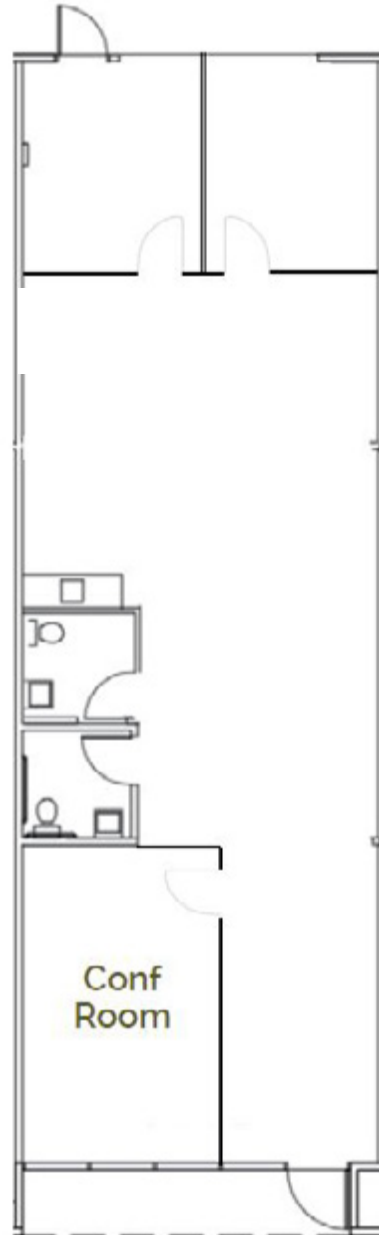


BUILDING 860

Suite D

1,602 SF

- Two (2) private offices
- One (1) large conference room
- Two (2) restrooms
- Kitchenette space



TO SCHEDULE A TOUR OR FOR ADDITIONAL INFORMATION, PLEASE CONTACT:

MATT BRACCO | RE License No: 01185434 | +1 925 200 3537 | matt.bracco@jll.com

CHRIS NEEB | RE License No: 01324612 | +1 707 495 7777 | chris.neeb@jll.com

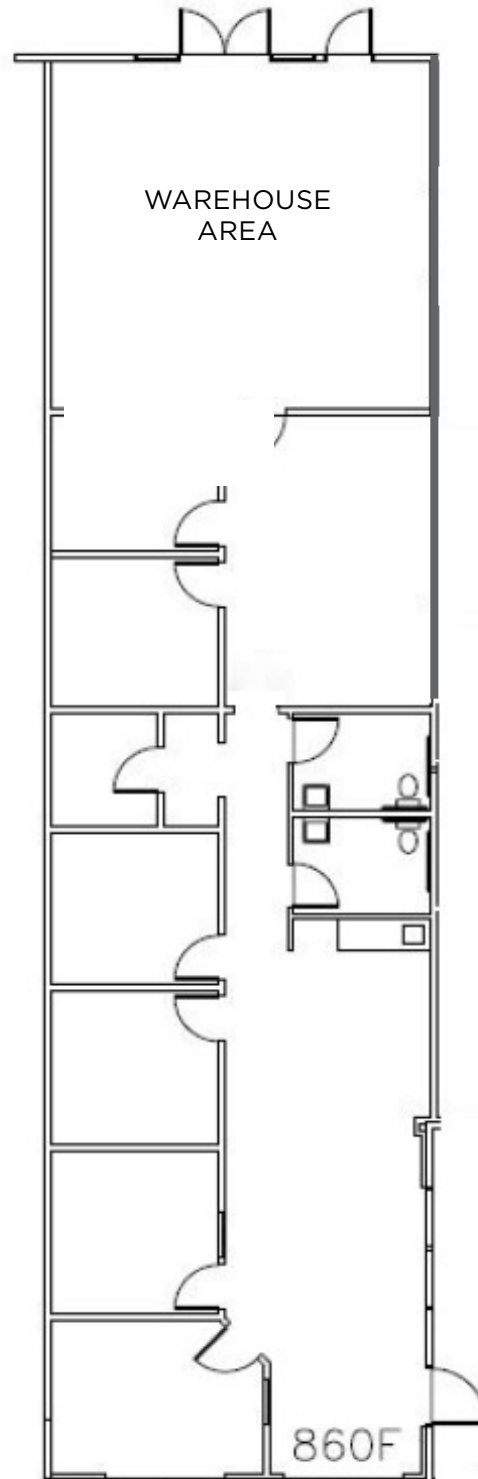
GLEN DOWLING | RE License No: 00890450 | +1 707 227 7800 | glen.dowling@jll.com

BUILDING 860

Suite F

2,472 SF

- Office and warehouse space
- Oversized, double-glass exterior door into warehouse area
- Temperature controlled warehouse space
- Mix of private offices and open areas
- Accessible from front and back parking lots



TO SCHEDULE A TOUR OR FOR ADDITIONAL INFORMATION, PLEASE CONTACT:

MATT BRACCO | RE License No: 01185434 | +1 925 200 3537 | matt.bracco@jll.com

CHRIS NEEB | RE License No: 01324612 | +1 707 495 7777 | chris.neeb@jll.com

GLEN DOWLING | RE License No: 00890450 | +1 707 227 7800 | glen.dowling@jll.com



BUILDING 860

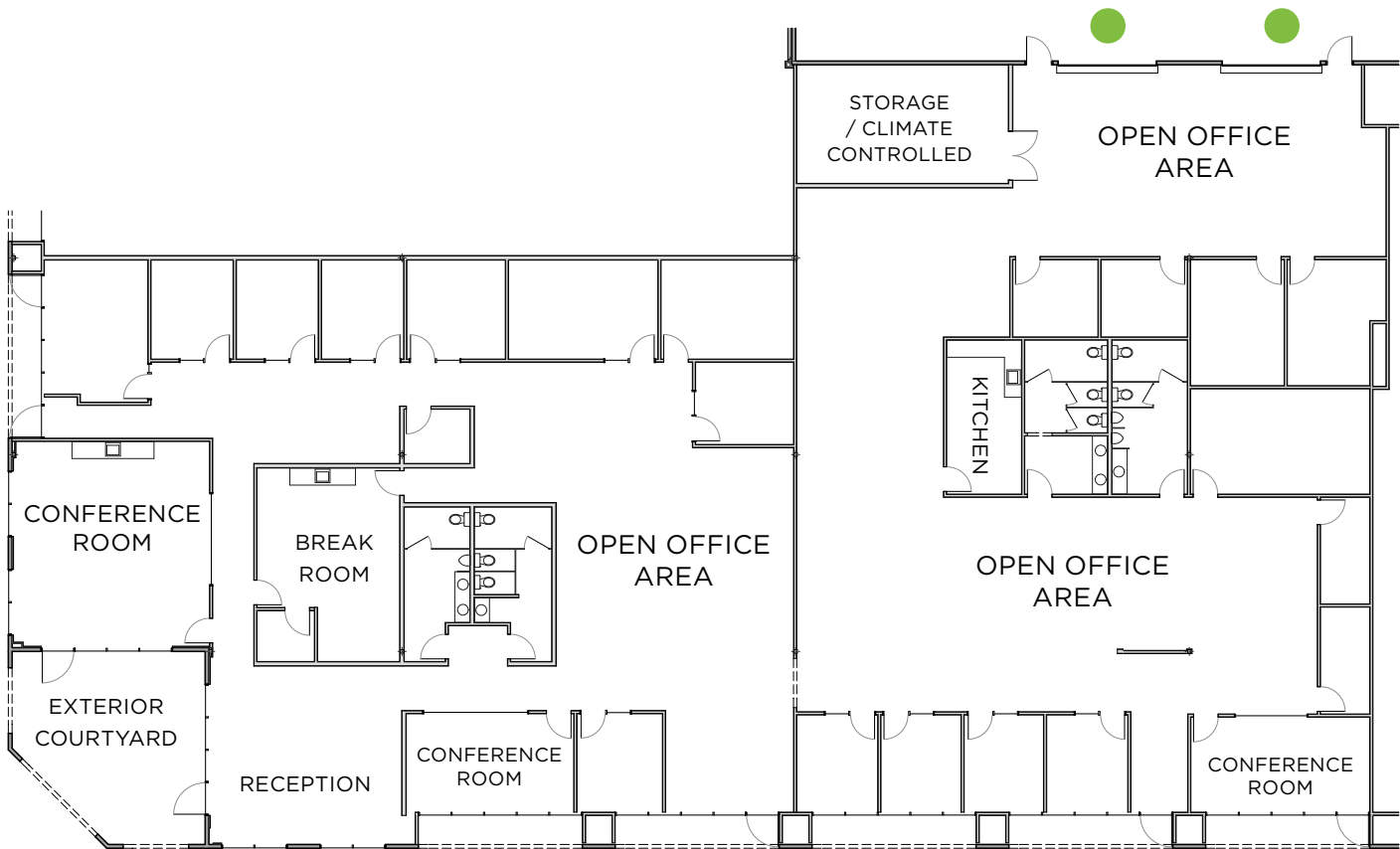
Suite O
6,270 SF

- 100% office space
- Corner suite
- Refurbished in 2016
- High quality finishes throughout
- Courtyard access
- One (1) conference room & one (1) large training /meeting room
- Extensive glass line

BUILDING 860

Suite K
6,841 SF

- Flex space with two (2) roll-up doors
- Refurbished in 2017
- High quality finishes throughout
- Mix of private offices and open office areas



Suite O

Suite K

Combine suites for a total of ±13,111 SF

TO SCHEDULE A TOUR OR FOR ADDITIONAL INFORMATION, PLEASE CONTACT:

MATT BRACCO | RE License No: 01185434 | +1 925 200 3537 | matt.bracco@jll.com

CHRIS NEEB | RE License No: 01324612 | +1 707 495 7777 | chris.neeb@jll.com

GLEN DOWLING | RE License No: 00890450 | +1 707 227 7800 | glen.dowling@jll.com



BUILDING 860

Suite O
6,270 SF

- 100% office space
- Corner suite
- Refurbished in 2016
- High quality finishes throughout
- Courtyard access
- One (1) conference room & one (1) large training /meeting room
- Extensive glass line

BUILDING 860

Suite K
6,841 SF

- Flex space with two (2) roll-up doors
- Refurbished in 2017
- High quality finishes throughout
- Mix of private offices and open office areas



TO SCHEDULE A TOUR OR FOR ADDITIONAL INFORMATION, PLEASE CONTACT:

MATT BRACCO | RE License No: 01185434 | +1 925 200 3537 | matt.bracco@jll.com

CHRIS NEEB | RE License No: 01324612 | +1 707 495 7777 | chris.neeb@jll.com

GLEN DOWLING | RE License No: 00890450 | +1 707 227 7800 | glen.dowling@jll.com