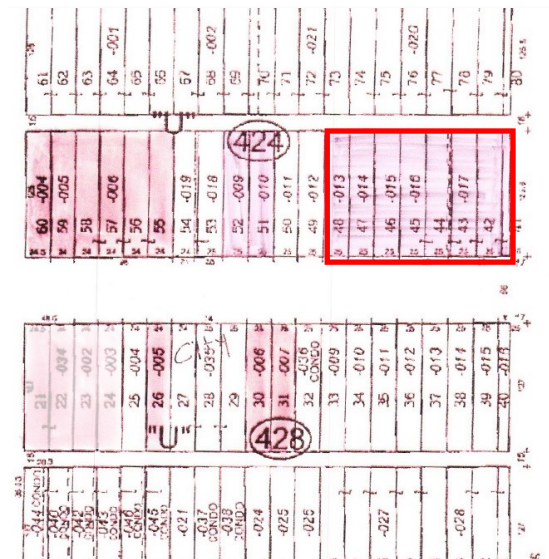


HIGH VISIBILITY DEVELOPMENT OPPORTUNITY NEAR UNITED CENTER—±23,000 SF LAND SITE



±23,000 SF high visibility land site, zoned RT-4, for sale at the corner of Western & Warren. 125' of frontage along Western Avenue. Great location next to Popeyes, with quick and easy access to I-290. United Center is only 5 minutes away.

- Asking Price:** \$3,499,000
- Size:** ±23,000 SF
- Lot Dimensions:** 125'x183'
- Location:** Stop Light Corner—
Just West of the United Center
- Ward:** 27—Alderman Burnett
- Zoning:** RT-4

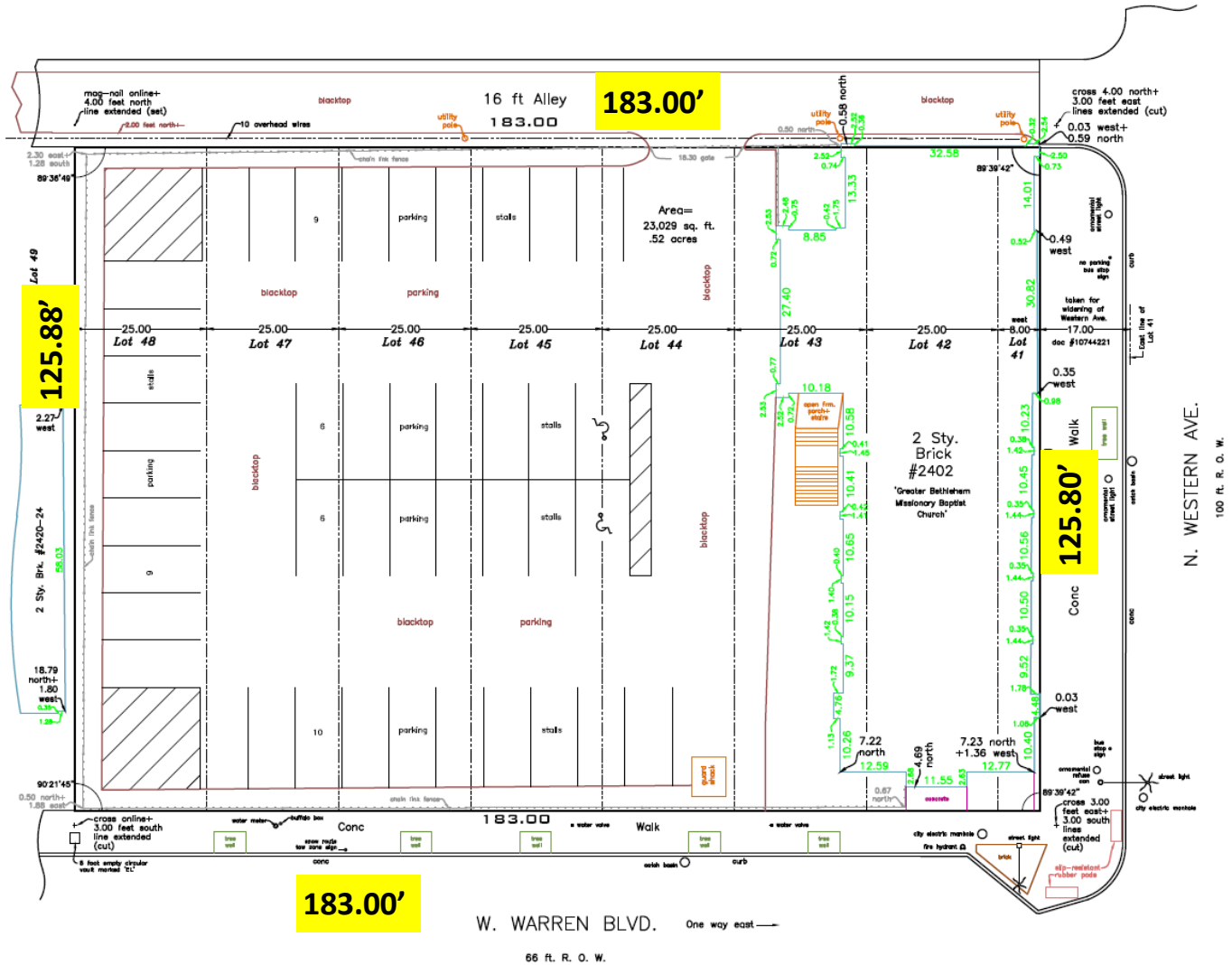


ADAM SCHNEIDERMAN, SIOR
847-826-4467
ADAM@STRAUSSREALTY.COM

DALE STRAUSS
773-736-3600
DALE@STRAUSSREALTY.COM

STRAUSS REALTY, LTD.
4220 W. MONTROSE AVENUE
CHICAGO, ILLINOIS 60641
PHONE: 773-736-3600

SURVEY



PIN #s: 16-12-424-013-0000, 16-12-424-014-0000, 16-12-424-015-0000, 16-12-424-016-0000,
16-12-424-017-0000

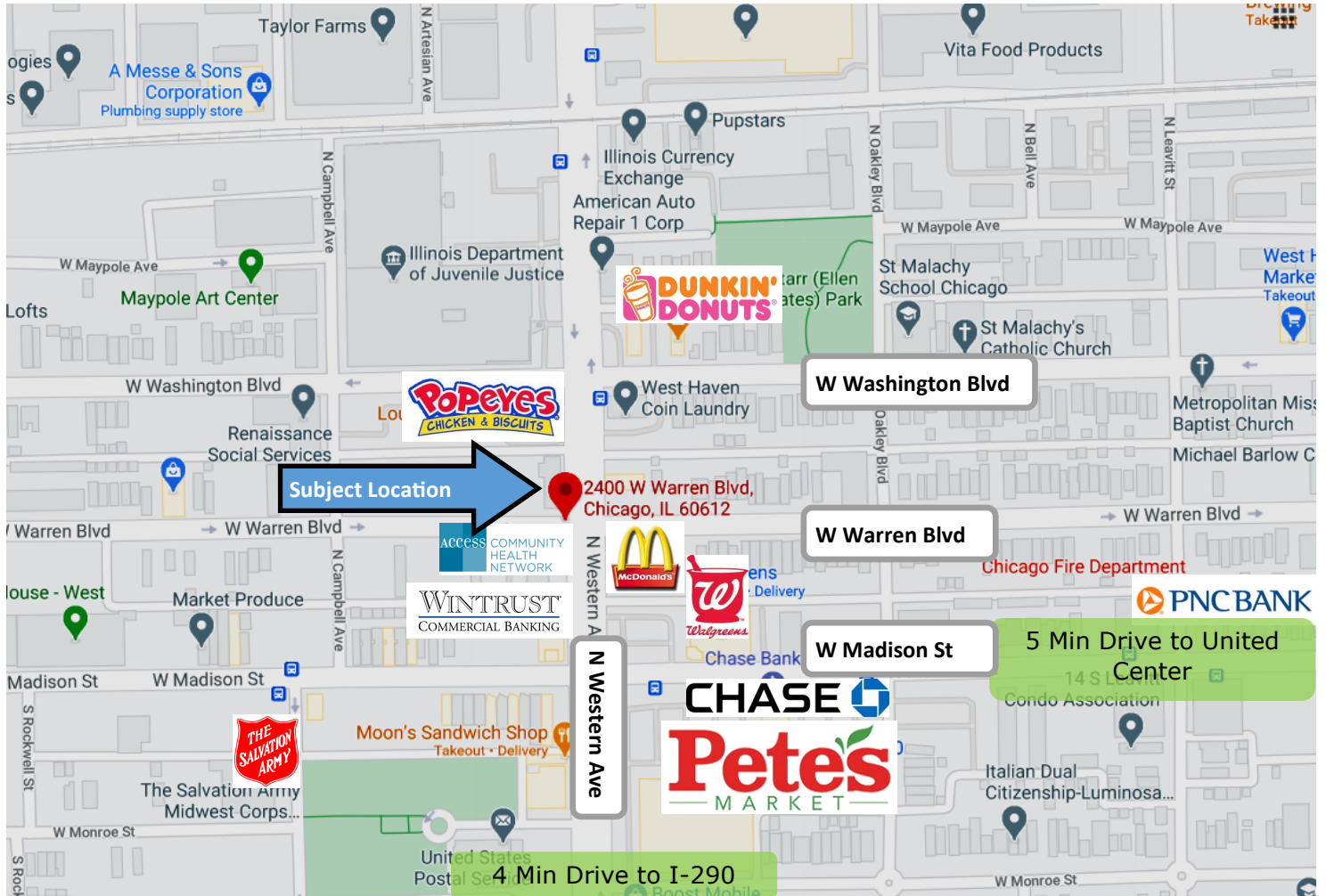


ADAM SCHNEIDERMAN, SIOR
847-826-4467
ADAM@STRAUSSREALTY.COM

DALE STRAUSS
773-736-3600
DALE@STRAUSSREALTY.COM

STRAUSS REALTY, LTD.
4220 W. MONTROSE AVENUE
CHICAGO, ILLINOIS 60641
PHONE: 773-736-3600

Amenities and Transportation Map



- Located next to Popeyes and directly across from Shell Gas Station.
- Nearby businesses include McDonald's, Walgreens, Pete's Fresh Market, Chase Bank, PNC Bank, Dunkin' Donuts, Wendy's and more.
- 5 minutes west of United Center.
- Only 4 minutes to I-290 via Western Avenue.



ADAM SCHNEIDERMAN, SIOR
847-826-4467
ADAM@STRAUSSREALTY.COM

DALE STRAUSS
773-736-3600
DALE@STRAUSSREALTY.COM

STRAUSS REALTY, LTD.
4220 W. MONTROSE AVENUE
CHICAGO, ILLINOIS 60641
PHONE: 773-736-3600