

FOR SALE

HIGH-TRAFFIC RETAIL

1427 UPPER FRONT STREET
BINGHAMTON, NY 13901



PROPERTY SUMMARY

- + 4,700 sq. ft. free-standing retail building
- + Former auto related facility
- + Includes 7 drive-in bays, showroom, office area, ADA restrooms
- + 1.33 acre site
- + Approx. 23,000 daily traffic count
- + High-traffic commercial corridor serving Binghamton
- + Neighboring businesses: Lowe's, Price Chopper, Weis Markets, CVS Pharmacy, Advance Auto Parts, Auto Zone, Meineke Muffler, Mr. Tire and Mavis
- + Minutes from I-81



CONTACT EXCLUSIVE AGENT

RICK SEARLES

Senior Broker
C +1 607 221 5302
W +1 315 422 4200
rick.searles@cbre-syr.com

CBRE | SYRACUSE

Nettleton Commons
313 E. Willow St., Ste. 202
Syracuse, NY 13203
www.cbre.com/syracuse

© 2017 CB Richard Ellis/Syracuse, N.Y., LLC. This information has been obtained from sources believed reliable. We have not verified it and make no guarantee, warranty or representation about it. Any projections, opinions, assumptions or estimates used are for example only and do not represent the current or future performance of the property. You and your advisors should conduct a careful, independent investigation of the property to determine to your satisfaction the suitability of the property for your needs. Photos herein are the property of their respective owners and use of these images without the express written consent of the owner is prohibited.

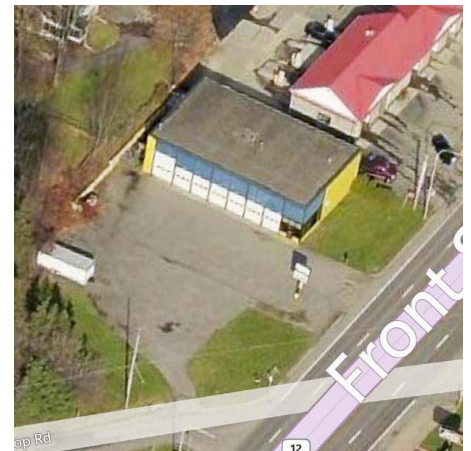
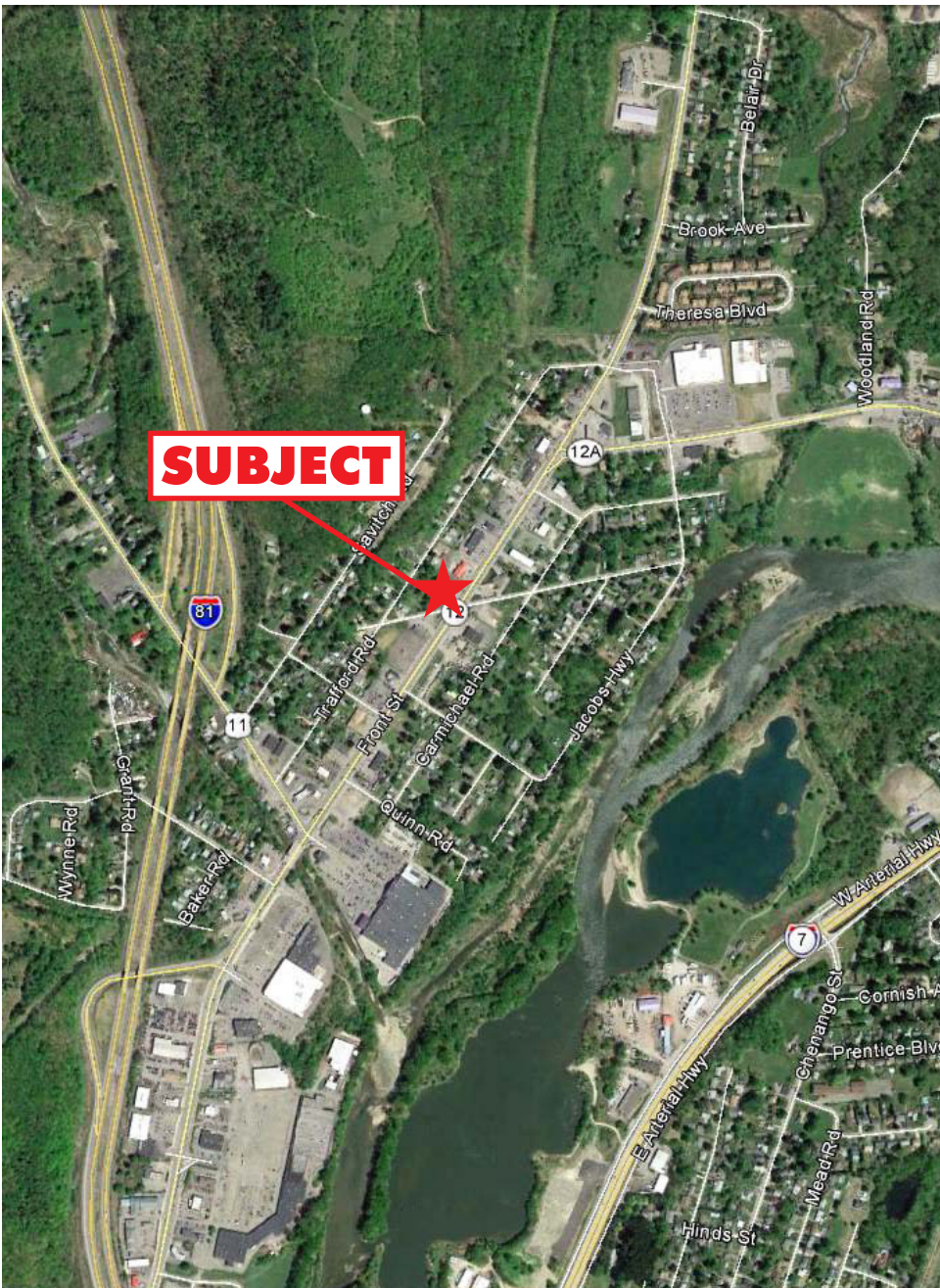
www.cbre.com/syracuse

CBRE | Syracuse

Part of the CBRE affiliate network

FOR SALE
HIGH-TRAFFIC RETAIL

1427 UPPER FRONT STREET
BINGHAMTON, NY 13901



CBRE | Syracuse

Part of the CBRE affiliate network