

FOR LEASE - ±2.5 ACRE SITE

NEGOTIABLE RATE

8490 Nelson Way, Escondido, California 92026



For More Information, please contact:

Rick Marcus, CCIM, RET

VICE PRESIDENT

760.747.8899

rickm@cbcsocalgroup.com

CalDRE # 00816072

San Diego Office:

4452 Park Boulevard, Suite 103, San Diego, CA 92116

Temecula Office:

27368 Via Industria, Suite 102, Temecula, CA 92590

 **COLDWELL
BANKER
COMMERCIAL
SC**

T 951.200.7683 / F 951.239.3147
cbcsocalgroup.com

FOR LEASE - ±2.5 ACRES

8490 Nelson Way, Escondido, California 92026

Property Details

- Property Size:** ±2.5 Acre Development Site
- Zoning:** M52 <https://www.sandiegocounty.gov/content/dam/sdc/pds/zoning/z2000.pdf>
- General Plan Land Use Designation:** Medium Impact Industrial <https://www.sandiegocounty.gov/dplu/docs/framework.pdf>
- Description:**
- Utilities:** Valley Center Municipal Water District
- Asking Rate:** Negotiable



For More Information, please contact:

Rick Marcus, CCIM, RET
VICE PRESIDENT
760.747.8899
rickm@cbcsocalgroup.com
CalDRE # 00816072

San Diego Office:
4452 Park Boulevard, Suite 103, San Diego, CA 92116

Temecula Office:
27368 Via Industria, Suite 102, Temecula, CA 92590

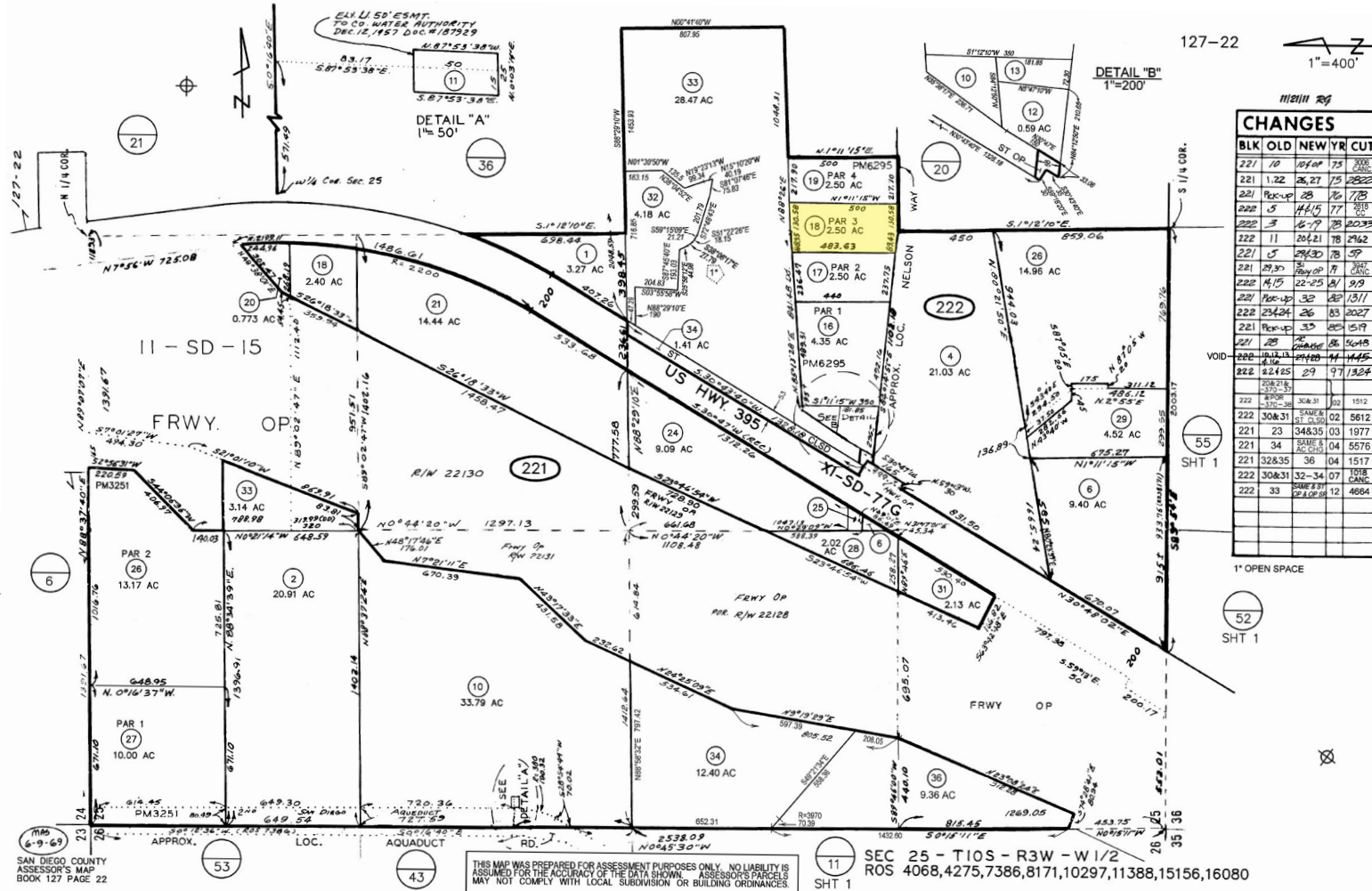


T 951.200.7683 / F 951.239.3147
cbcsocalgroup.com

FOR LEASE - ±2.5 ACRES

8490 Nelson Way, Escondido, California 92026

Parcel Map



For More Information, please contact:

Rick Marcus, CCIM, RET
VICE PRESIDENT
760.747.8899
rickm@cbcsocalgroup.com
CalDRE # 00816072

San Diego Office:
4452 Park Boulevard, Suite 103, San Diego, CA 92116

Temecula Office:
27368 Via Industria, Suite 102, Temecula, CA 92590



T 951.200.7683 / F 951.239.3147
cbcsocalgroup.com

FOR LEASE - ±2.5 ACRES

8490 Nelson Way, Escondido, California 92026

Location

The property is located in the city of Escondido, California. Located within Northern San Diego County just East the I-15 freeway via Old Highway 395. Easy I-15 access.



For More Information, please contact:

Rick Marcus, CCIM, RET
VICE PRESIDENT
760.747.8899
rickm@cbcsocalgroup.com
CaIDRE # 00816072

San Diego Office:
4452 Park Boulevard, Suite 103, San Diego, CA 92116

Temecula Office:
27368 Via Industria, Suite 102, Temecula, CA 92590



T 951.200.7683 / F 951.239.3147
cbcsocalgroup.com