

For Lease

Office

594-3,33 SF | \$14.00 SF/yr



1380 Main Street

Springfield, Massachusetts 01103

Property Highlights

- \$14/sf + Utilities
- Large offices
- Reception and Kitchen area
- Convenient access to major transportation routes
- Free parking at MGM Casino

Property Description

For Lease: 540 and 3,300 SF office spaces located in a professional building in downtown Springfield, MA. Reception areas, large offices with lots of windows, kitchen and smaller rooms perfect for storage or filing cabinets. Convenient access to major transportation routes, parking garages and the many cultural amenities the city has to offer including the MassMutual Center and MGM Casino.

OFFERING SUMMARY

Available SF	594 - 3,300 SF
Building Size	50,000 SF

DEMOGRAPHICS

Stats	Population	Avg. HH Income
1 Mile	18,031	\$32,120
3 Miles	129,567	\$53,063
5 Miles	232,989	\$66,229



For more information

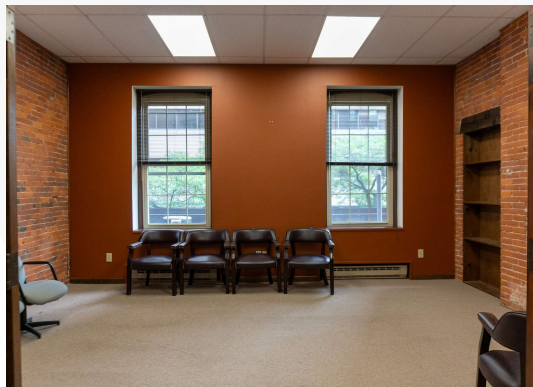
David Wolos

O: 413 200 6019 | C:
dwolos@splotkin.com

For Lease

Office Suite 202

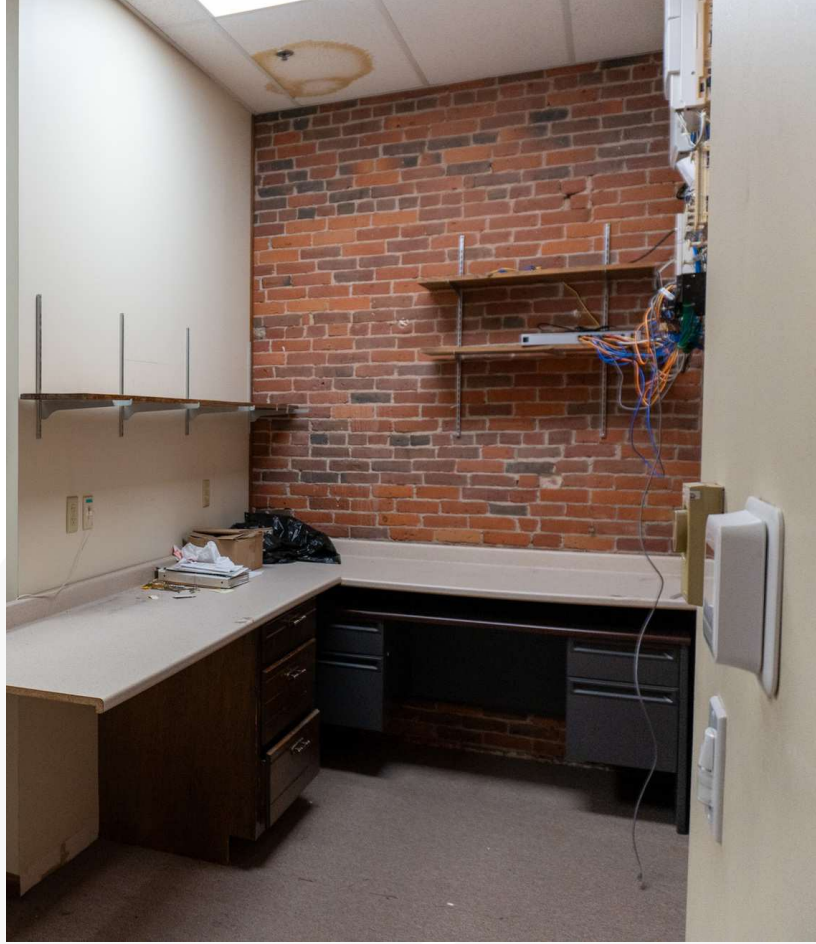
594 - 3,300 SF | \$14.00 SF/yr



For Lease

Office Suite 202

594 - 3,300 SF | \$14.00 SF/yr

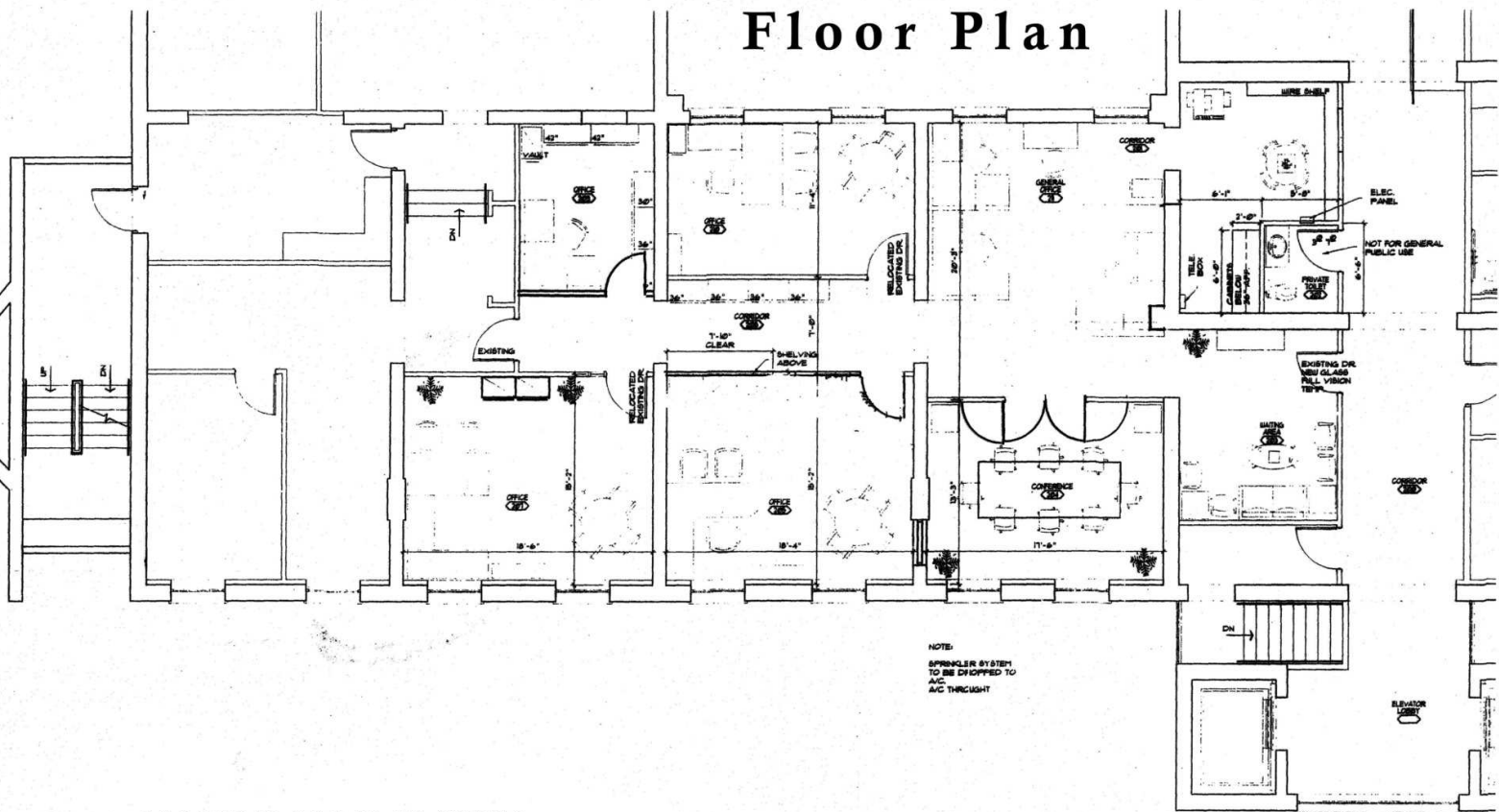


For Lease

Office Suite 202

594 - 3,300 SF | \$14.00 SF/yr

Floor Plan



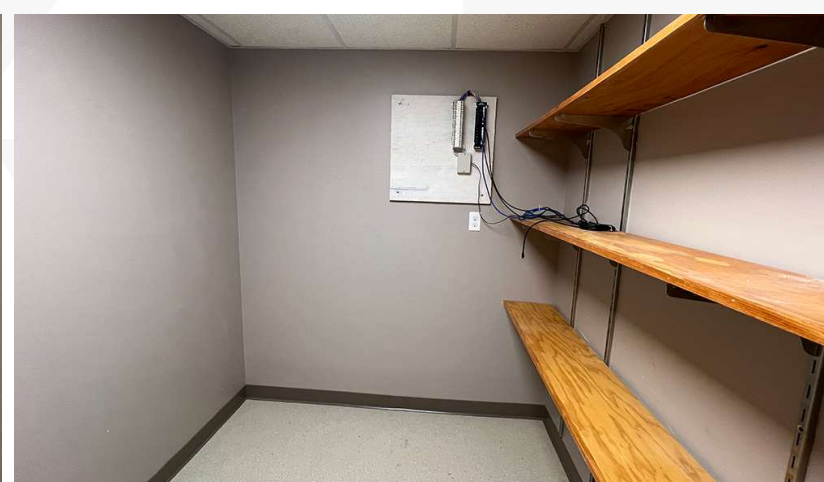
NOTE:
SPRINKLER SYSTEM
TO BE DROPPED TO
A/C THROUGH

SECOND FLOOR PLAN (PARTIAL)
SCALE: 1/4" = 1'-0"
EXISTING
DEM'D
NEW

For Lease

Office Suite 404

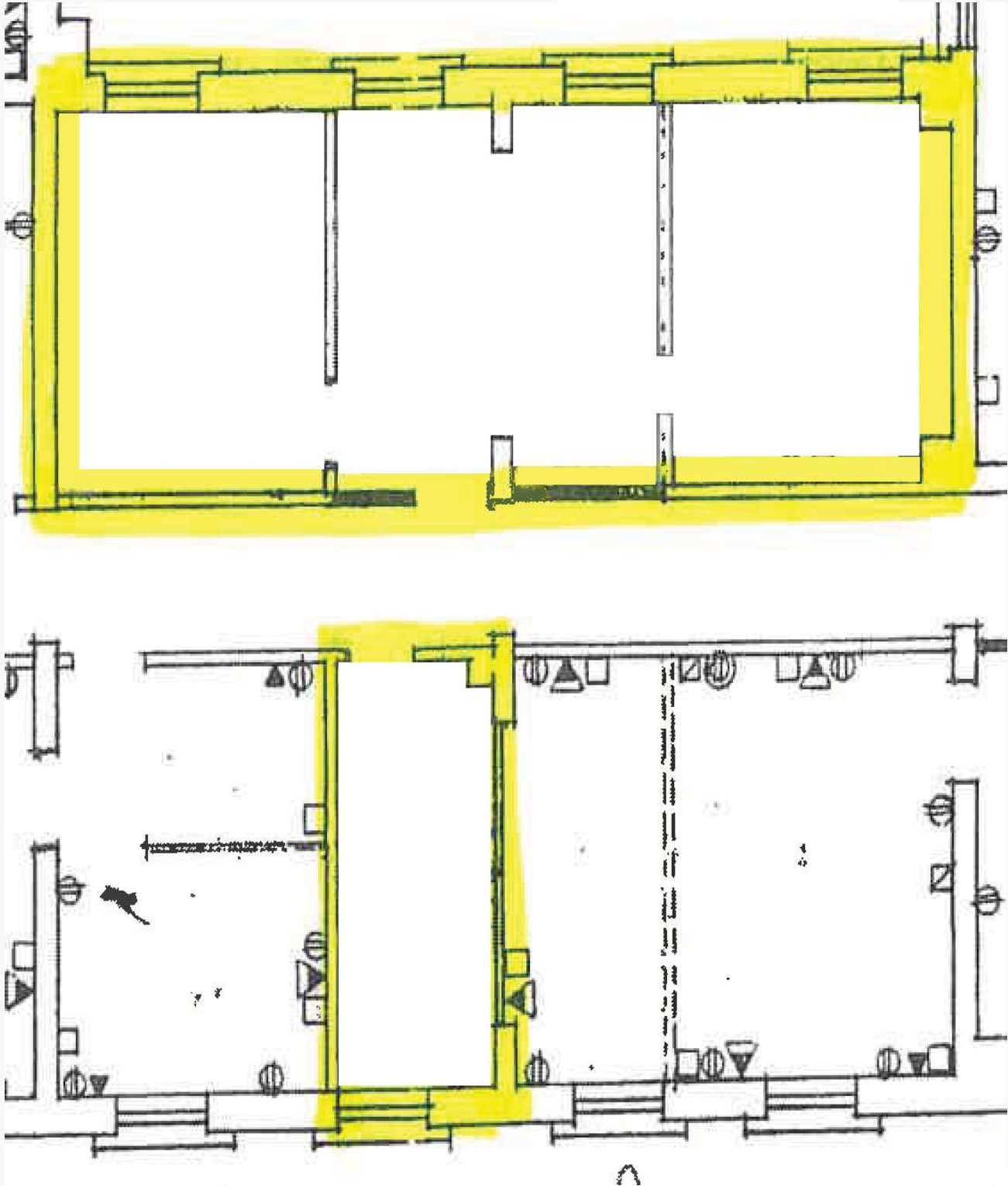
594 - 3,300 SF | \$14.00 SF/yr



For Lease

Office

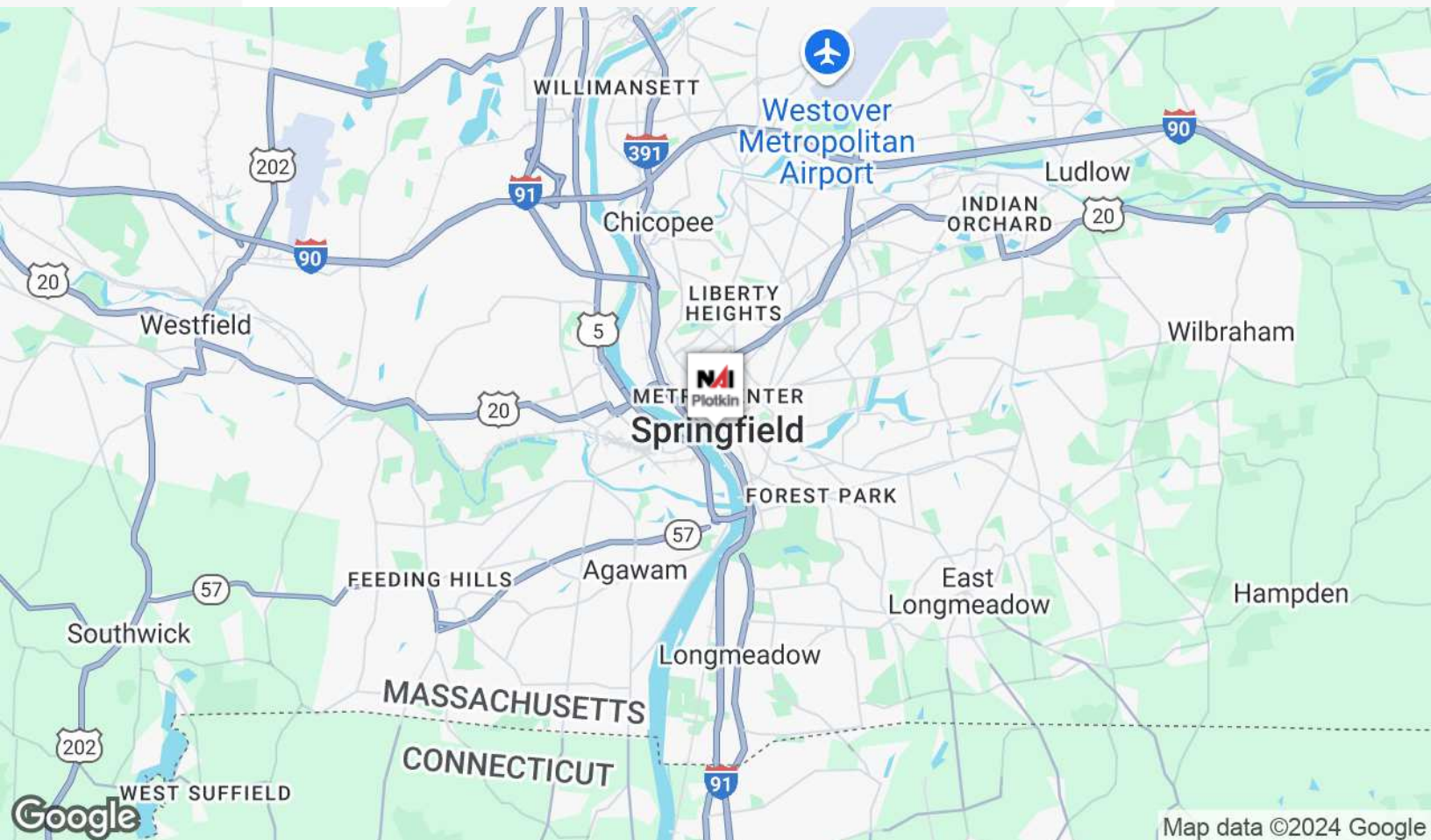
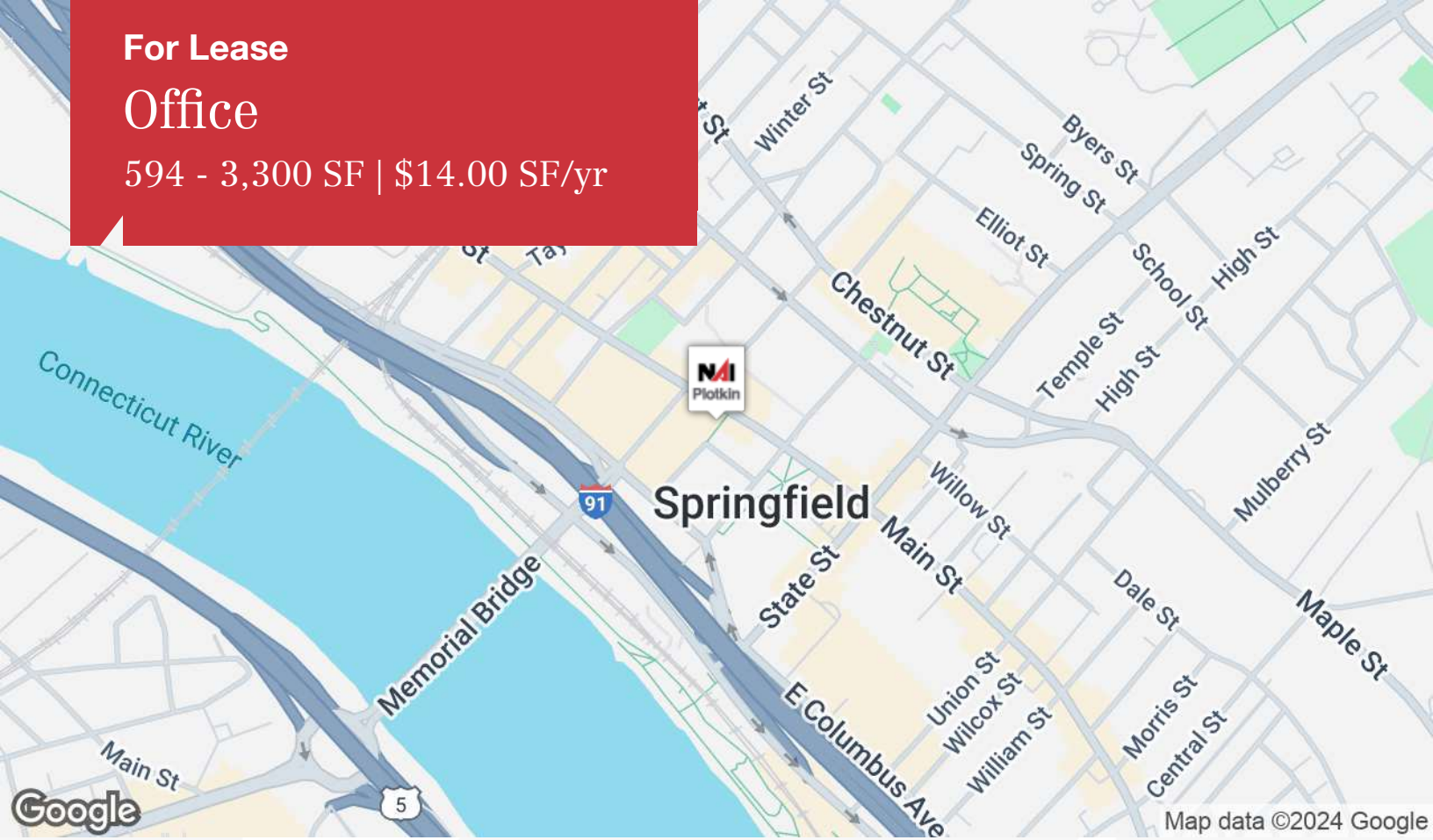
594 - 3,300 SF | \$14.00 SF/yr



For Lease

Office

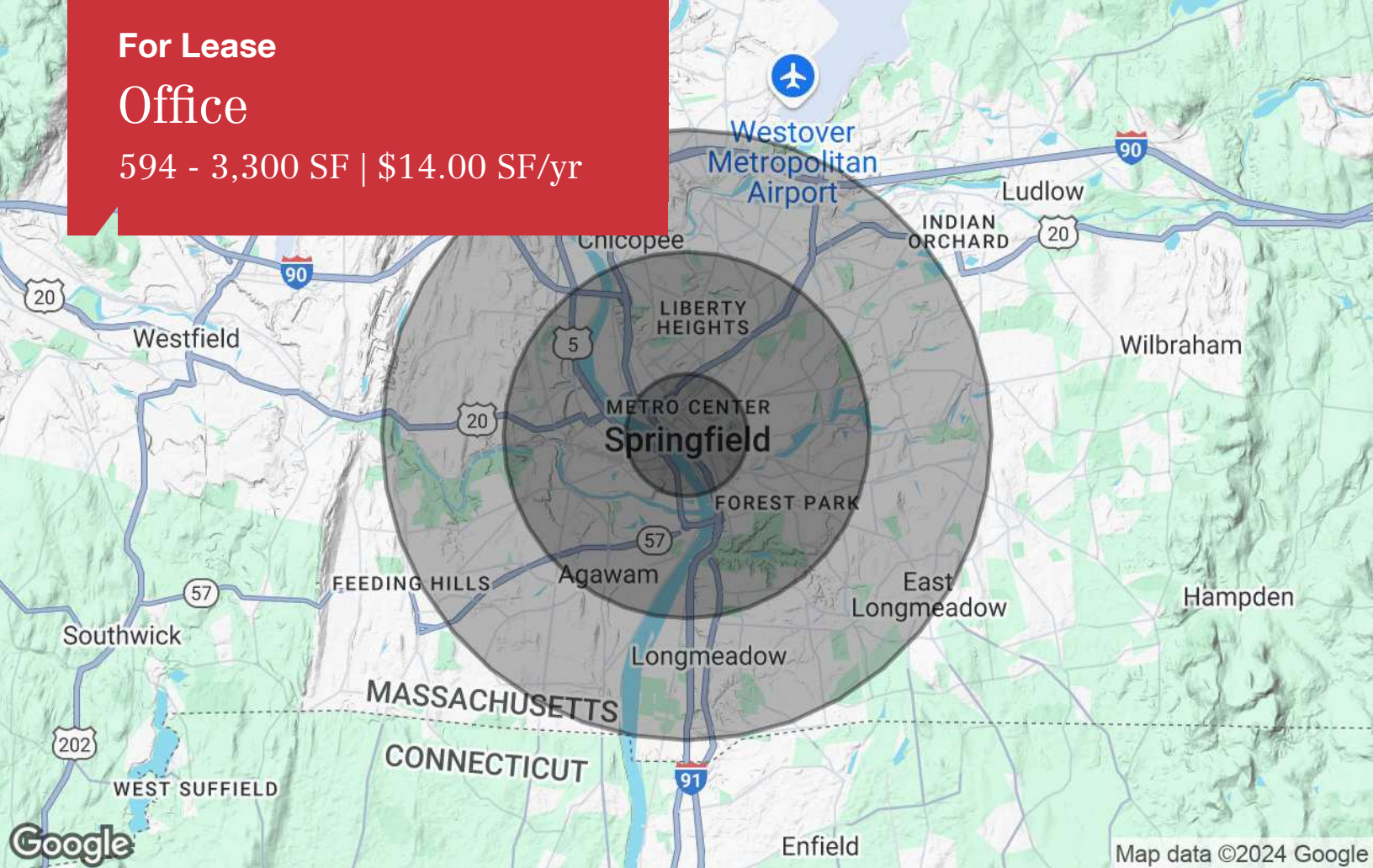
594 - 3,300 SF | \$14.00 SF/yr



For Lease

Office

594 - 3,300 SF | \$14.00 SF/yr



Population

	1 Mile	3 Miles	5 Miles
TOTAL POPULATION	18,031	129,567	232,989
MEDIAN AGE	34.2	34.8	37.5
MEDIAN AGE (MALE)	33.5	32.3	35.0
MEDIAN AGE (FEMALE)	36.9	37.0	39.4

Households & Income

	1 Mile	3 Miles	5 Miles
TOTAL HOUSEHOLDS	9,096	53,512	96,228
# OF PERSONS PER HH	2.0	2.4	2.4
AVERAGE HH INCOME	\$32,120	\$53,063	\$66,229
AVERAGE HOUSE VALUE	\$93,822	\$159,718	\$183,346

Race

	1 Mile	3 Miles	5 Miles
% WHITE	64.0%	68.0%	74.7%
% BLACK	18.4%	18.3%	14.5%
% ASIAN	1.8%	3.5%	3.7%
% HAWAIIAN	0.0%	0.0%	0.0%
% INDIAN	0.2%	0.3%	0.3%
% OTHER	15.5%	9.9%	6.8%

Ethnicity

	1 Mile	3 Miles	5 Miles
% HISPANIC	67.9%	43.5%	33.1%

* Demographic data derived from 2020 ACS - US Census