

**229 N. MAIN
VALENTINE, NE**



A large office building in the heart of downtown Valentine.

DODI OSBURN

Sales Associate

Cell Phone: 402-322-5777

Email: Dodi@lashleyland.com

PROPERTY HIGHLIGHTS

List Price	\$210,000	\$190,000
Location	229 N. Main St., Valentine, NE 69201	
Legal Description	OT LOT 13 BLK 11	
Taxes - Estimated	\$1,485	

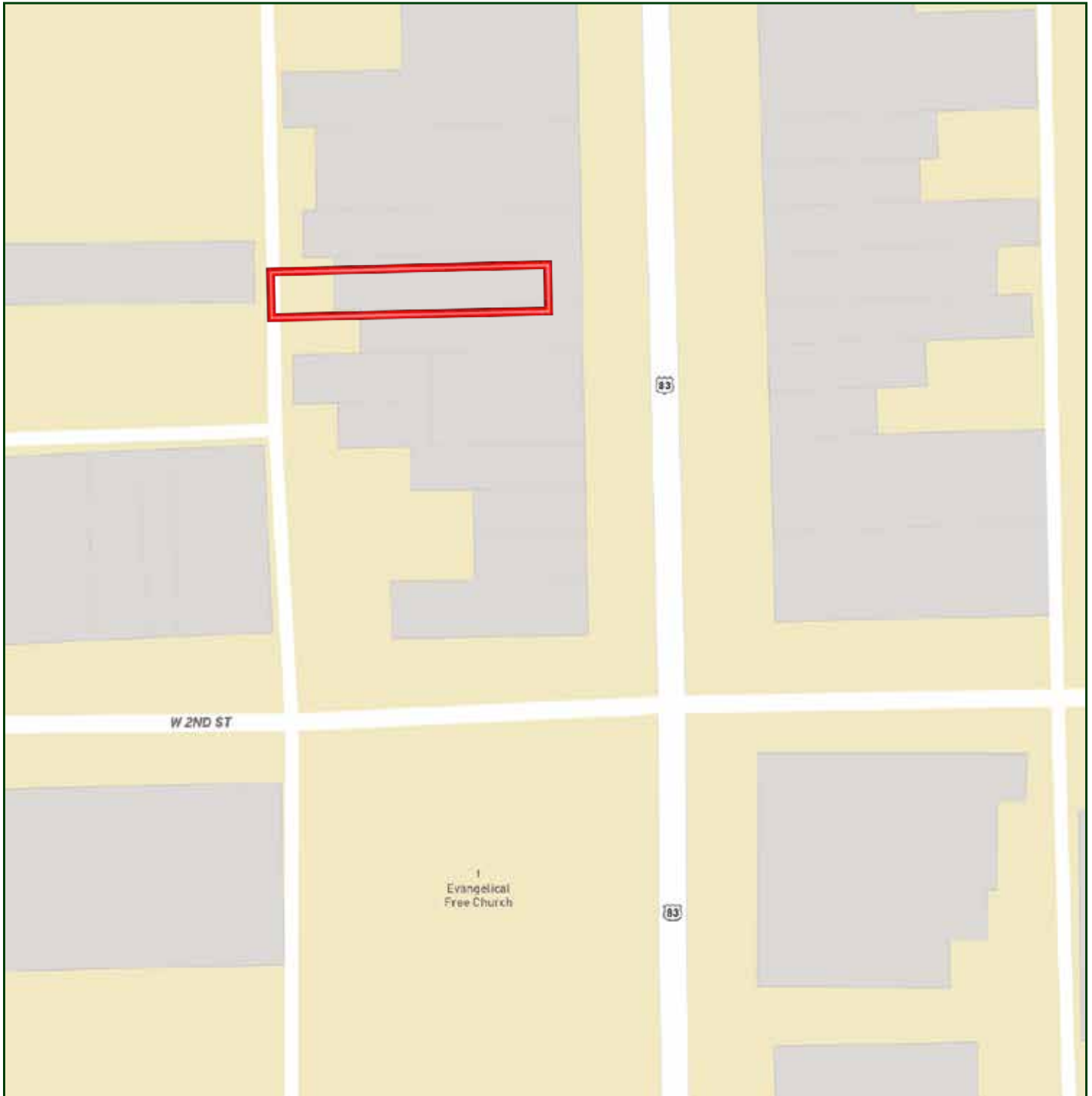
Property Summary

A very rare opportunity to step into this wonderful office space. It features 7 large offices, and multiple conference rooms. It has a full basement underneath and a full attic above. Prime main street office space frontage with ample parking. Call Dodi for more information 402-322-5777.

All information herein is from sources deemed reliable, however the accuracy is not guaranteed by Lashley Land and Recreational Brokers, Inc., seller or agent. Offering is subject to error, omissions, prior sale, price change or withdrawal without notice.

DODI OSBURN
Sales Associate
Cell Phone: 402-322-5777
Email: dodi@lashleyland.com

LOCATION MAP



Boundary lines are estimates - Map for illustration only

AERIAL MAP



Boundary lines are estimates - Map for illustration only

DODI OSBURN

Sales Associate

Cell Phone: 402-322-5777

Email: dodi@lashleyland.com

PROPERTY IMAGES



PROPERTY IMAGES



DODI OSBURN
Sales Associate
Cell Phone: 402-322-5777
Email: dodi@lashleyland.com

PROPERTY IMAGES





NEBRASKA EXPERTS, NATIONAL EXPOSURE

Contact Information

Office: 308-532-9300

Fax: 308-532-1854

Email: info@lashleyland.com

Website: LashleyLand.com

Mike Lashley, Owner|Broker

Amy Lashley-Johnston, Scott Saults, Skip Marland, Jordan Maassen, April Good, Jon Farley, Tami Timmerman-Lashley, Randy Helms, Dodi Osburn, Bill Grant, Shane Mauch, Jake McQuillen, Brandi Housman, Leala Jimerson, Stephanie Miller, DeAnn Vaughn, Ann Gray, and Jake Hopwood

Like us on Facebook

[Facebook.com/LashleyLand](https://www.facebook.com/LashleyLand)

2218 E. Walker Road • North Platte, NE 69101

DODI OSBURN

Sales Associate

Cell Phone: 402-322-5777

Email: Dodi@lashleyland.com