

# SPACE 15TWENTY

**RETAIL SPACE  
AVAILABLE NOW**

**2,244 - 4,619 RSF**

[www.1520cahuenga.com](http://www.1520cahuenga.com)





# PROPERTY INFO

1538-1542 N. Cahuenga Blvd, Hollywood

2,244 - 4,619 RSF

Available Now

**Asking Rate:** \$4.25/SF/Month NNN

## Features

- Iconic, freestanding, low rise complex
- Prime identity & visibility
- Located in the Vinyl District, Hollywood's hottest new neighborhood
- 2nd generation retail space







**IT ALL STARTS HERE.**  
Enjoy the center of the city with a 98 Walk score.



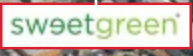
HOLLYWOOD HILLS



HOLLYWOOD BLVD



SUNSET BLVD



GAIJUENGA BLVD

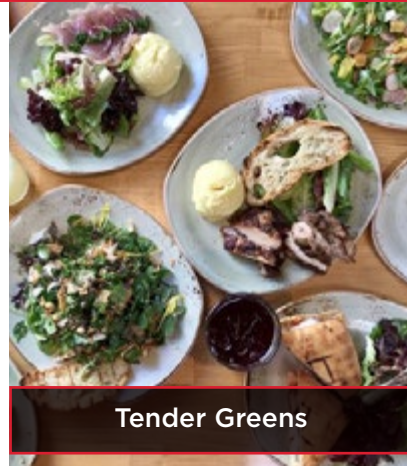


# CONVENIENT

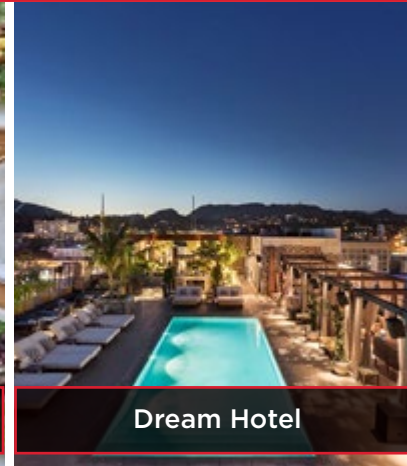


## 5 MINUTE WALK

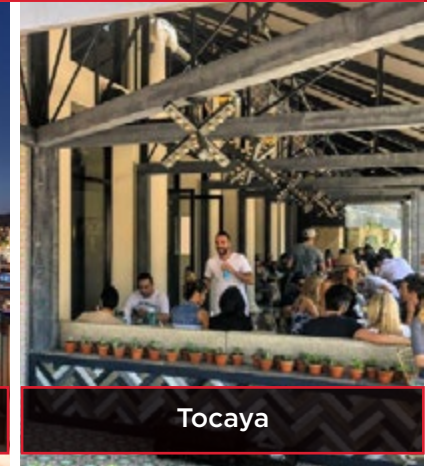
- Mama Shelter
- Trader Joe's
- Dream Hotel/The Highlight Room
- Groundwork Coffee
- Tender Greens
- Veggie Grill
- Equinox
- Stout
- Musso & Franks
- The Palladium
- St. Felix
- APL
- Hollywood Farmers Market
- Metro Red Line
- Trejos Tacos
- Third Base
- Grandmaster Recorders



Tender Greens



Dream Hotel



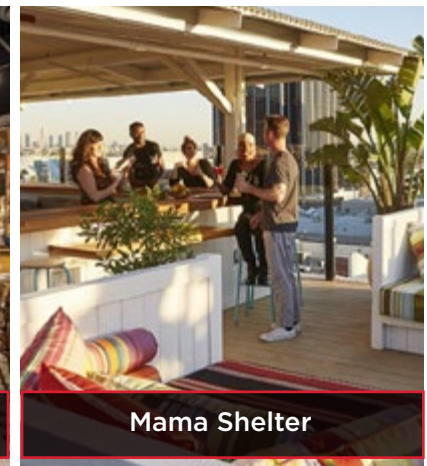
Tocaya



Hollywood Farmers Market



APL



Mama Shelter

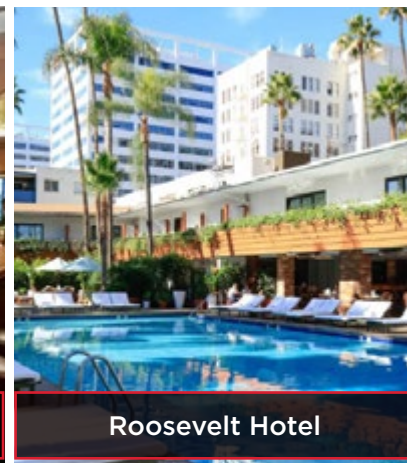


## 5-10 MINUTE CAR DRIVE

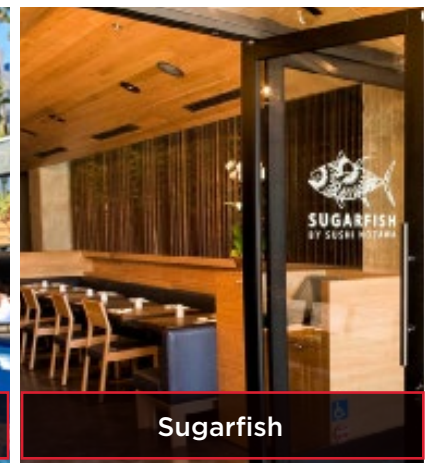
- Tocaya
- Sweetgreen
- Sugarfish
- Sunset Gower Studios
- The Roosevelt Hotel
- Hollywood Bowl
- The Sycamore District
- Gigi's
- Tartine
- Just One Eye
- Sightglass Coffee
- Melrose Shopping District



Musso and Franks

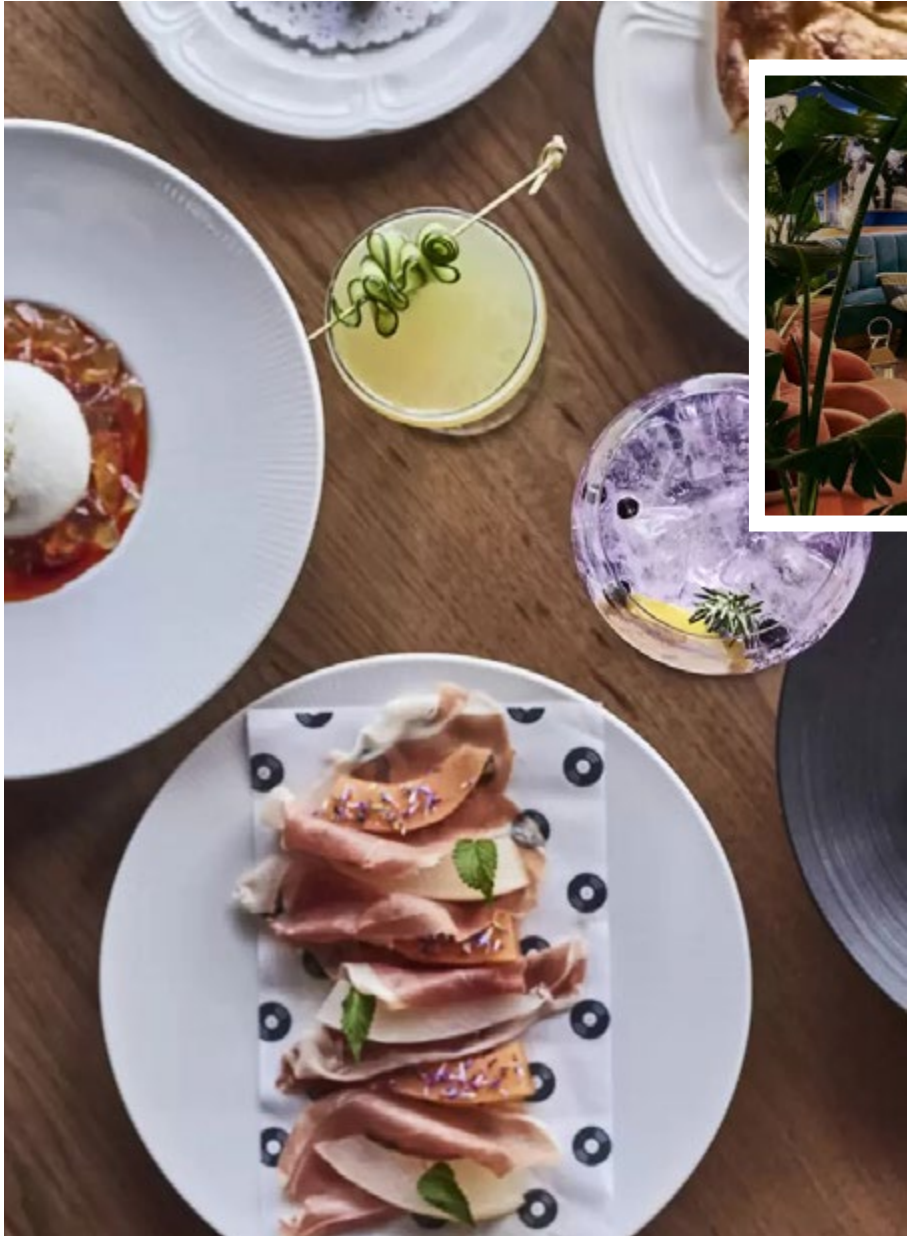


Roosevelt Hotel



Sugarfish

# VINYL DISTRICT



---

**Hollywood's Vinyl District  
Is a New Hub of Design and  
Culinary Creativity »**

---

**7 Openings That Prove Hollywood's  
Vinyl District Is the City's Hottest  
New Neighborhood »**

---

**The Vinyl District is Hollywood's  
Next Coolest Neighborhood**  
(california.com)



1540 N. Cahuenga



1538 N. Cahuenga ▶

**SPACE  
15TWENTY**

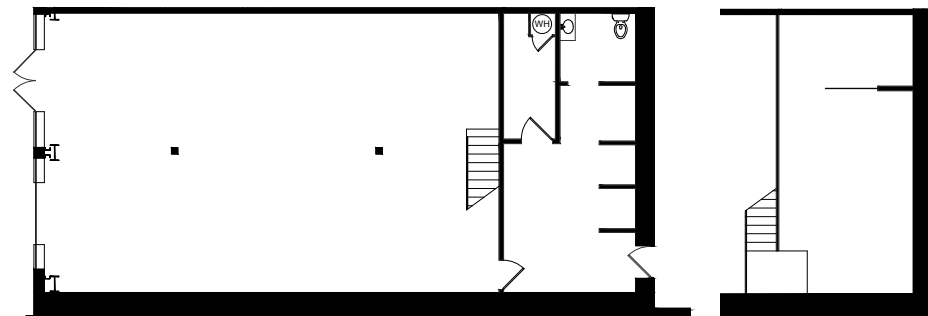


# FLOOR PLANS

## 2,244 - 4,619 RSF

1538 N. Cahuenga Blvd

- Retail space
- 2,244 SF (including mezzanine)
- Excellent signage opportunity
- 16' ceiling height

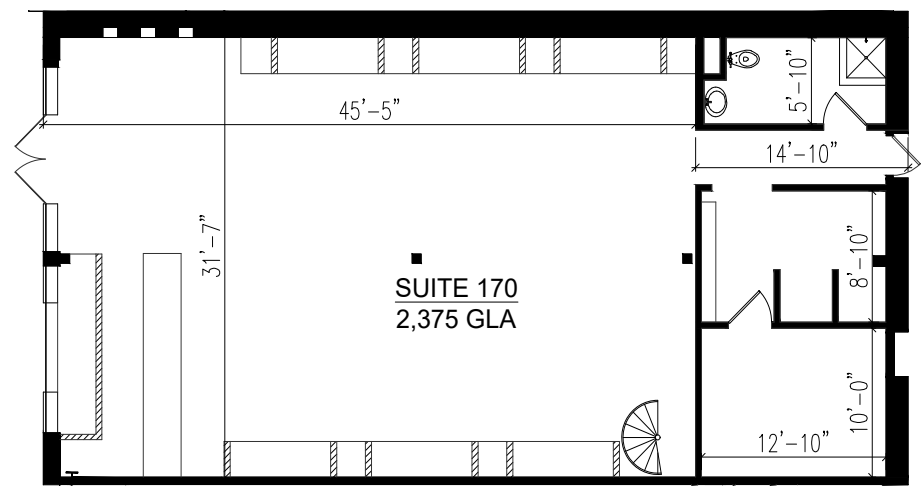


First floor

Mezzanine

1540 N. Cahuenga Blvd

- Retail space
- 2,375 SF (1,910 SF of ground floor, 465 SF mezzanine)
- Excellent ceiling height
- Signage opportunity on Cahuenga Blvd.



# SPACE 15TWENTY

IT ALL STARTS HERE.

## LEASING TEAM

NICOLE MIHALKA  
Managing Director  
+1 213.239.6076  
nicole.mihalka@jll.com  
LIC# 01322414

CARL MUHLSTEIN  
Executive Managing Director  
+1 213 239 6055  
carl.muhlstein@jll.com  
LIC# 00595250

CAITLYN ROSS  
Vice President  
+1 213.239.6339  
caitlyn.ross@jll.com  
LIC# 01892435

[www.1520cahuenga.com](http://www.1520cahuenga.com)



Although information has been obtained from sources deemed reliable, neither Owner nor JLL makes any guarantees, warranties or representations, express or implied, as to the completeness or accuracy as to the information contained herein. Any projections, opinions, assumptions or estimates used are for example only. There may be differences between projected and actual results, and those differences may be material. The Property may be withdrawn without notice. Neither Owner nor JLL accepts any liability for any loss or damage suffered by any party resulting from reliance on this information. If the recipient of this information has signed a confidentiality agreement regarding this matter, this information is subject to the terms of that agreement.  
© 2023 Jones Lang LaSalle IP, Inc. All rights reserved.