

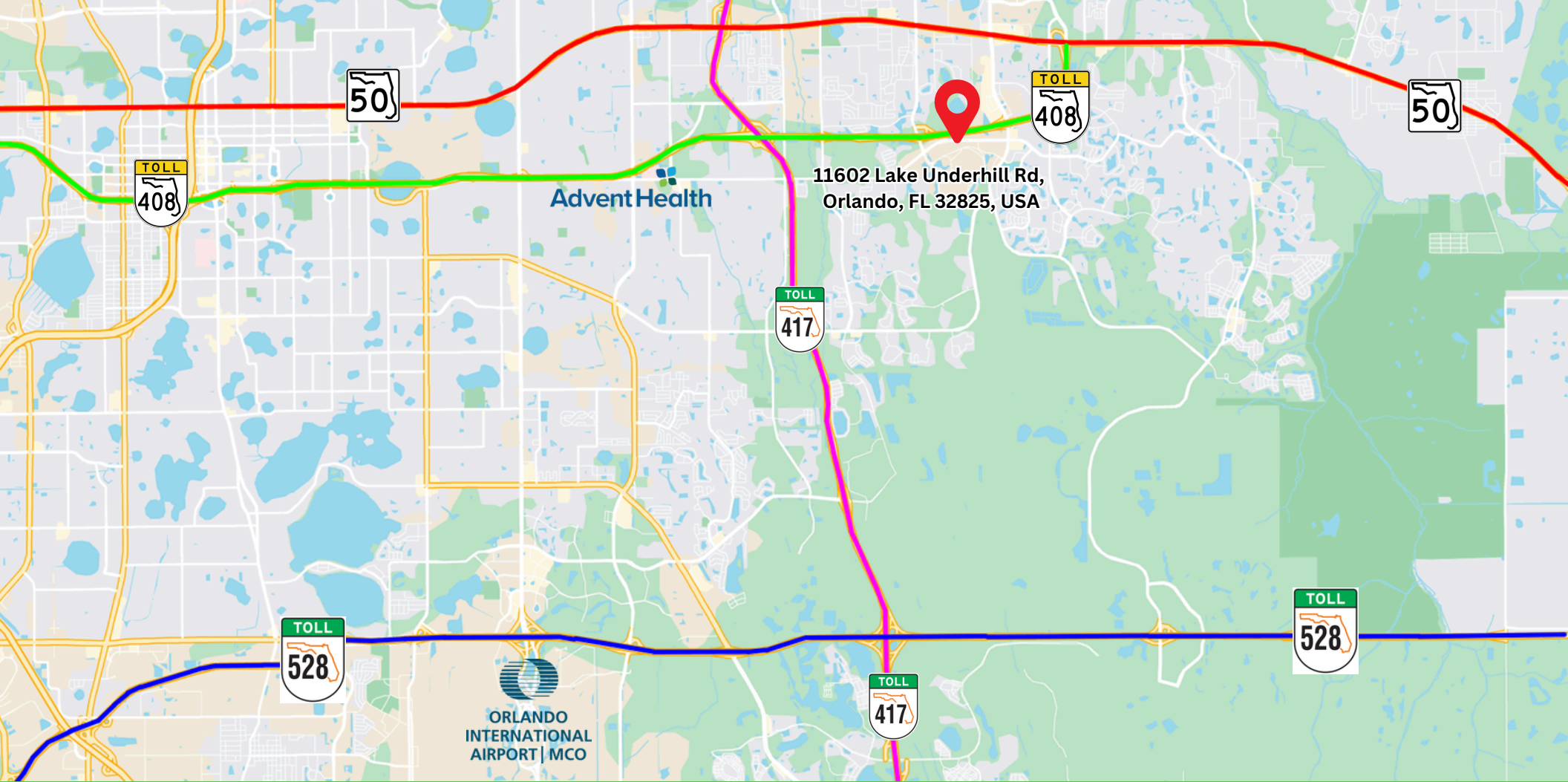
FOR LEASE
FLEX
OFFICE



Lake Underhill Business Center
Suites 137, 139, 140 and 141

11602 Lake Underhill Rd, Orlando, FL 32825, USA





11602 Lake Underhill Rd,
Orlando, FL 32825, USA

Suite#	SF	\$PSF	Opex	Monthly*
139-141	5,758	\$ 23.00	\$ 5.13	\$ 13,498
137	1,842	\$ 23.75	\$ 5.13	\$ 4,433

*does NOT include utilities or janitorial.

Amenities:

In close proximity to retail and restaurants.

Access:

Within minutes of SR 408

Location Highlights:

Professional park surrounded by a vibrant community of residential housing as well as the University of Central Florida.

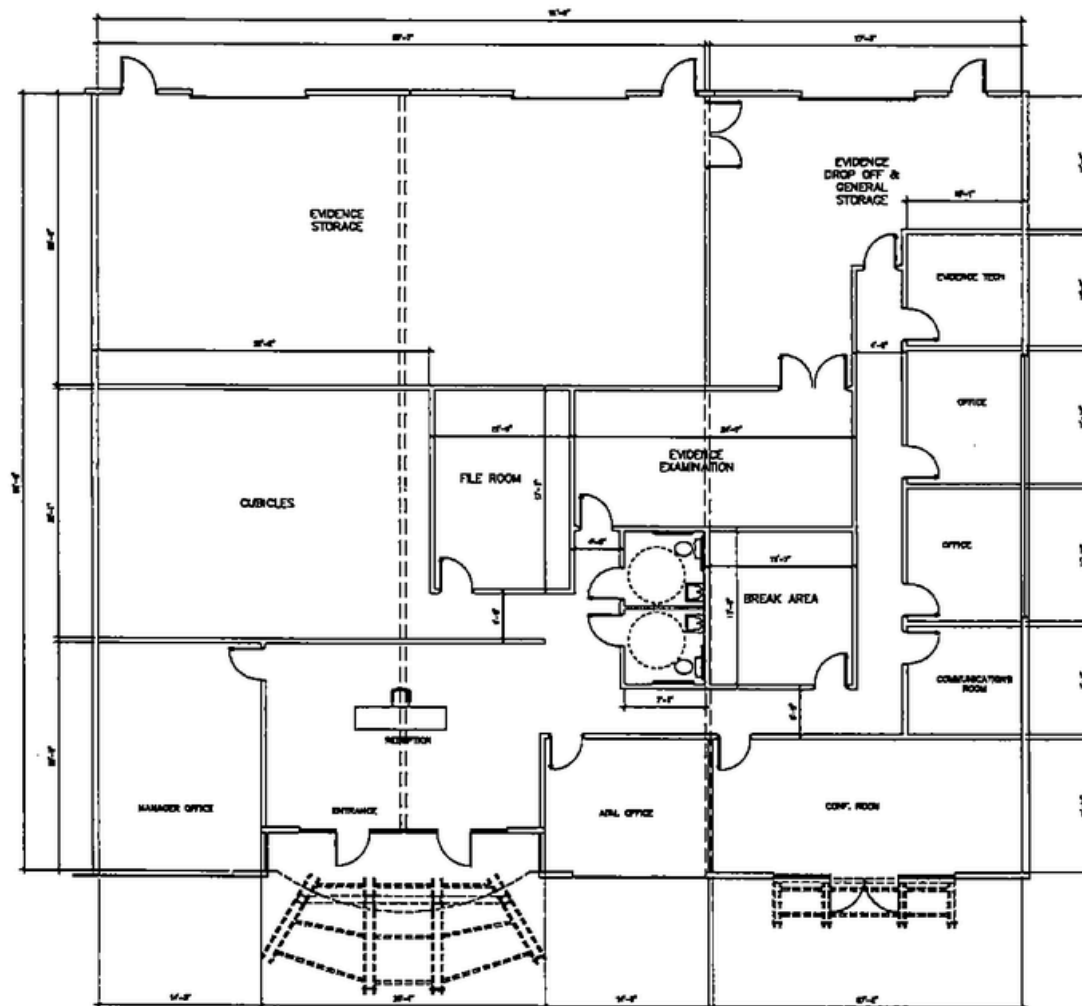


SHER TOLAN, SIOR
 407-810-2291
 stolan@allied-comm.com
 5401 S Kirkman Rd. Suite 310
 Orlando, FL 32819
 www.allied-comm.com



FLOOR PLAN 139-140-141

Total SF 5,758
Non AC'd Warehouse +/-2,119 SF



SHER TOLAN, SIOR

407-810-2291

stolan@allied-comm.com

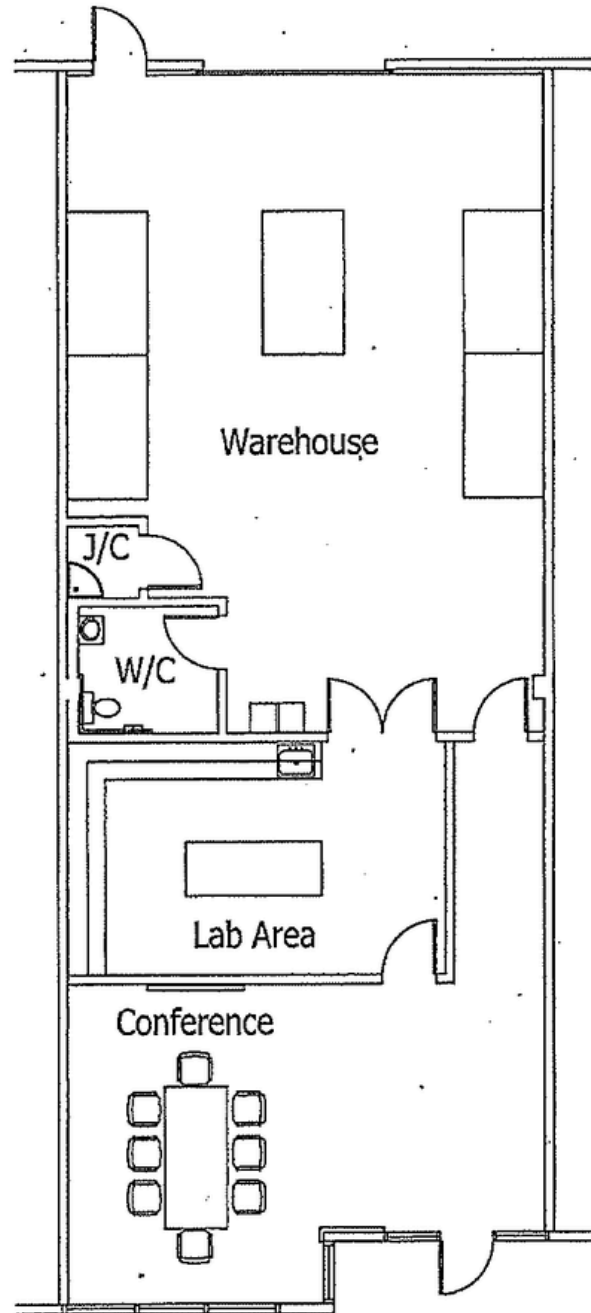
5401 S Kirkman Rd. Suite 310

Orlando, FL 32819

www.allied-comm.com



FLOOR PLAN T37



1,824 SF

50% AC'd Warehouse

50% Office

SHER TOLAN, SIOR

407-810-2291

stolan@allied-comm.com

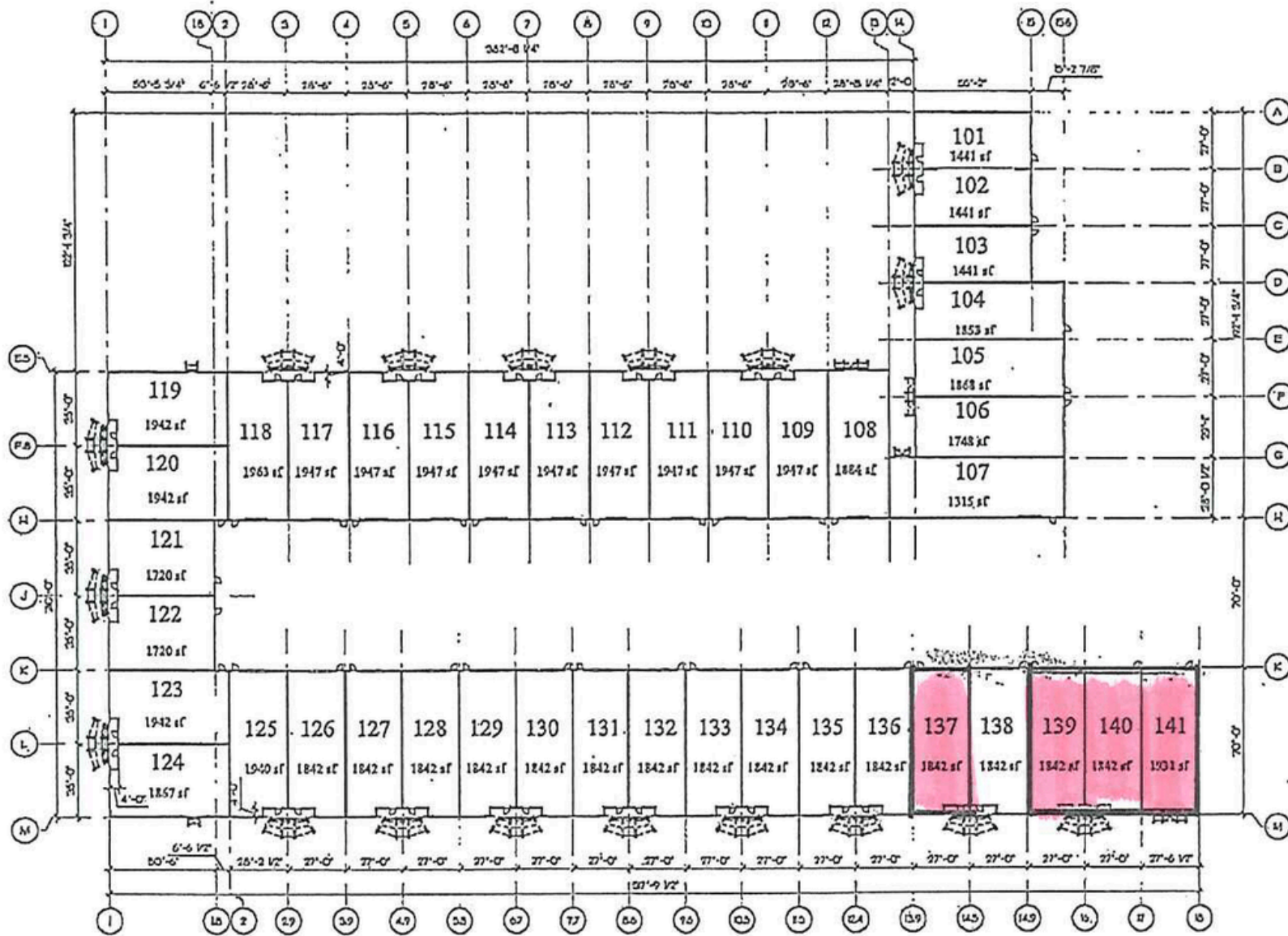
5401 S Kirkman Rd. Suite 310

Orlando, FL 32819

www.allied-comm.com



SITE PLAN



SHER TOLAN, SIOR

407-810-2291

stolan@allied-comm.com

5401 S Kirkman Rd. Suite 310

Orlando, FL 32819

www.allied-comm.com



SUITES 139-141



SHER TOLAN, SIOR

407-810-2291

stolan@allied-comm.com

5401 S Kirkman Rd. Suite 310

Orlando, FL 32819

www.allied-comm.com



SUITE 137



SHER TOLAN, SIOR

407-810-2291

stolan@allied-comm.com

5401 S Kirkman Rd. Suite 310

Orlando, FL 32819

www.allied-comm.com

