



# 3698 OMEC CIRCLE

RANCHO CORDOVA, CA

Price Reduced  
±4.7 Acres  
\$2,750,000

±10,000 SF on  
±1.858 Acres  
\$3,750,000

## FOR SALE

### ±10,000 SF Situated on ±6.59 Acres

- ±1,500 SF Office
- Auto Dismantling Use Permit
- 16' Clear Height
- 12' x 12' Grade Level Doors
- M-2 Zoning
- 200 Amp Electrical Service in Each Building
- APN: 072-3100-003/072-0570-015
- **Asking Price Reduced: \$6,500,000**
  - ±4.7 Acre Parcel Separately: \$2,750,000
  - ±10,000 SF on ±1.858 Acres: \$3,750,000

**NEWMARK**

**LOUIS JONES**  
t 916-295-9877  
louis.jones@nrmk.com  
CA RE License #01009324



# 3698

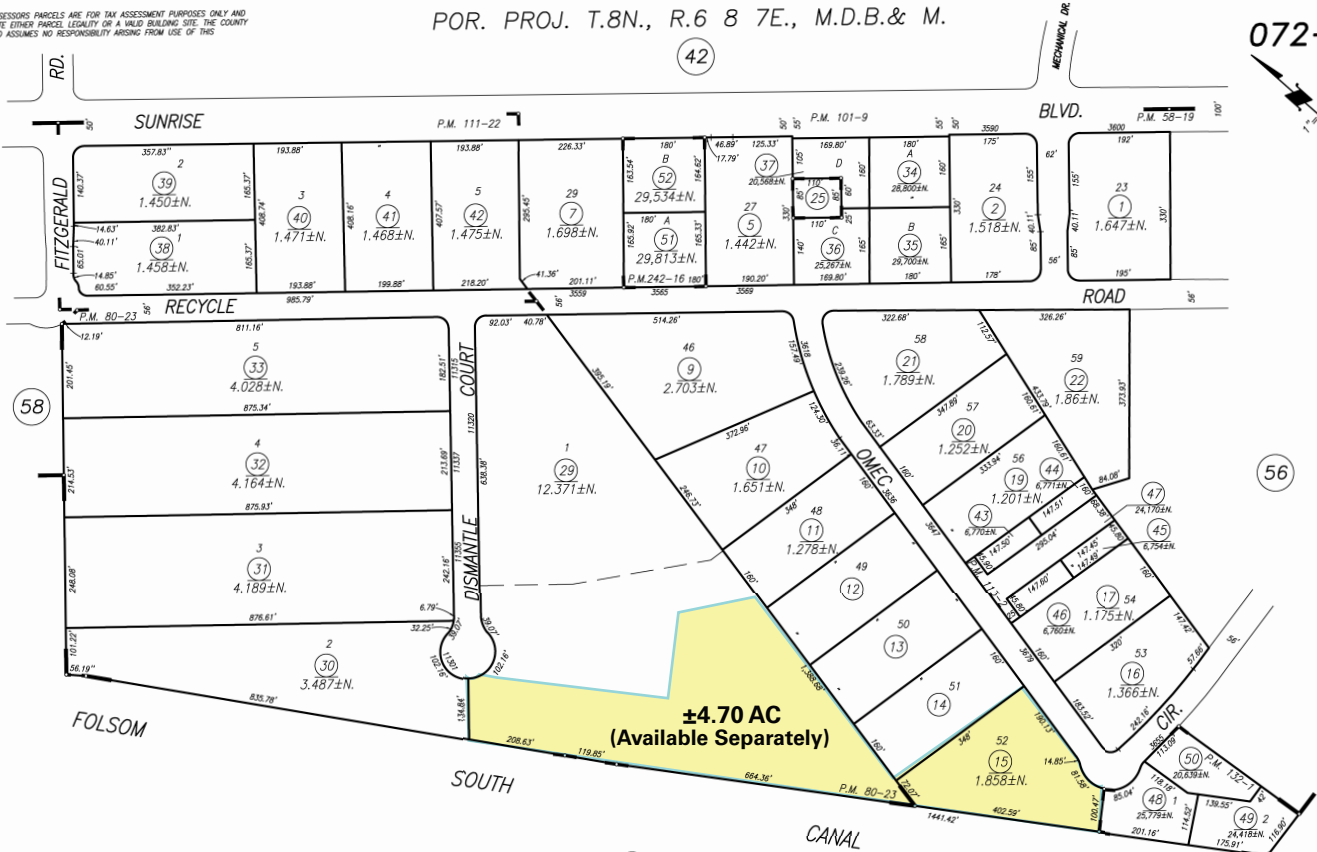
## OMEC CIRCLE

RANCHO CORDOVA, CA

DISCLAIMER: ASSESSOR'S PARCELS ARE FOR TAX ASSESSMENT PURPOSES ONLY AND DO NOT INDICATE EITHER PARCEL LEGALITY OR A VALID BUILDING SITE. THE COUNTY OF SACRAMENTO ASSUMES NO RESPONSIBILITY ARISING FROM USE OF THIS INFORMATION.

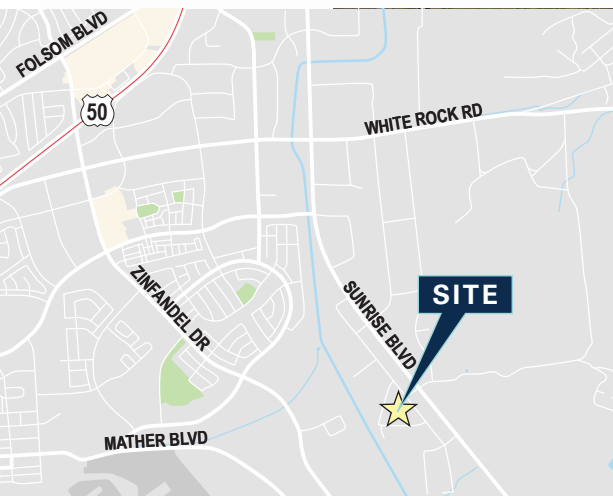
POR. PROJ. T.8N., R.6 8 7E., M.D.B.& M.

072-57



Omec Industrial, P.M. Bk.113, Pg.2 (8-7-89)  
Dismantle Park, Pcl. Map Bk.80, Pg.23 (3-30-84)  
Parcel Map, Bk. 58 Pg.19 (6-12-80)

Assessor's Map Bk. 072 Pg. 057  
County of Sacramento, Calif.  
May, 3rd, 2021



**NEWMARK**

The distributor of this communication is performing acts for which a real estate license is required. The information contained herein has been obtained from sources deemed reliable but has not been verified and no guarantee, warranty or representation, either express or implied, is made with respect to such information. Terms of sale or lease and availability are subject to change or withdrawal without notice. 8303164452.01/25

**LOUIS JONES**  
t 916-295-9877  
louis.jones@nmrk.com  
CA RE License #01009324