

# Office/Flex ★ LEASE

LanCarte.com

3501 NW LOOP 820 FORT WORTH, TX 76106



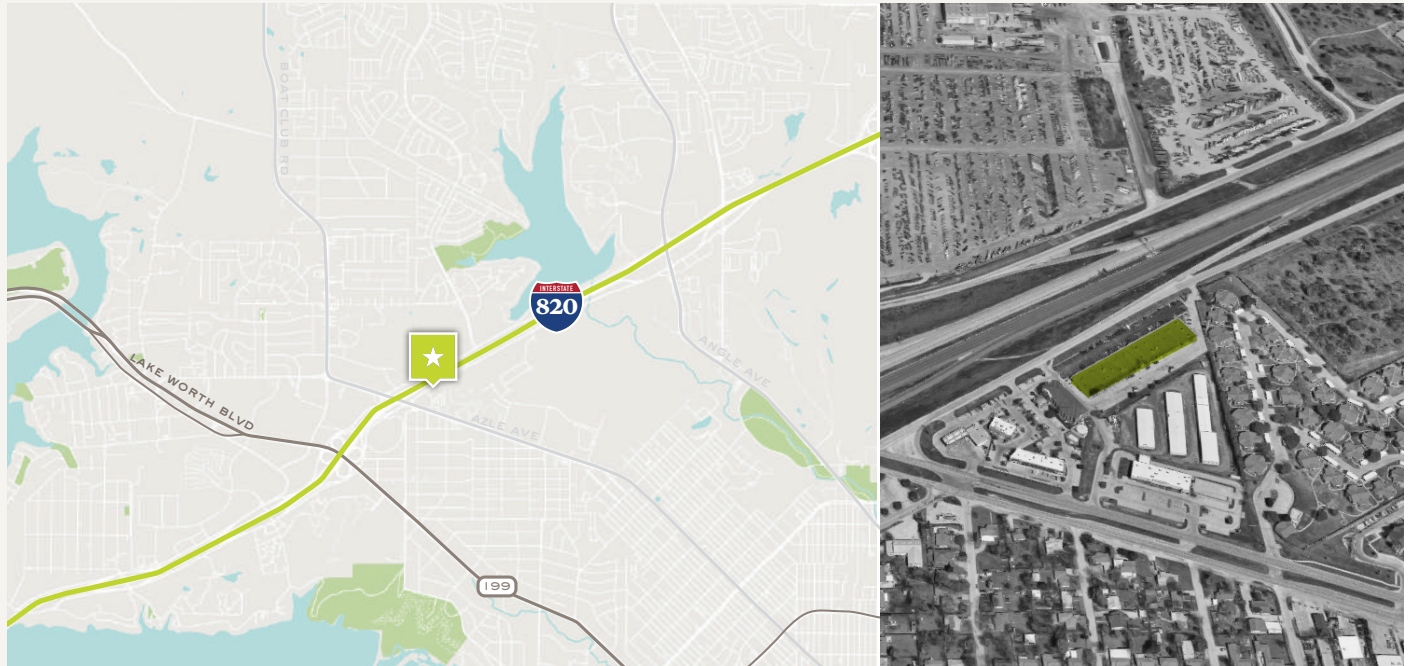
Riley Dow  
817-681-2022  
rdow@lancarte.com

Daniel Shelley  
512-461-5363  
dshelley@lancarte.com

# Office/Flex ★ LEASE

3501 NW LOOP 820

LanCarte.com



## PROPERTY FEATURES

---

- 2,500 SF Available
- 10 x 12 Grade Level Door
- Hwy 820 Frontage
- Ample Parking 4/1,000 SF
- Professional/Office Park
- Monument Signage Available
- Flex Warehouse/Office

## AVAILABLE SPACES

---

SUITE 3519

**2,500** SF FLEX

## LOCATION OVERVIEW

---

Located directly off Loop 820 in Fort Worth, this industrial business park offers outstanding visibility and immediate highway access. Just east of I-35W, the site provides seamless connections to critical north Fort Worth and regional distribution networks. With signage opportunities above each suite's entry and ample parking, the property is engineered for both ease of use and strong brand presence.

## LEASING STRUCTURE

---

## CONTACT BROKER

Office/Flex ★ LEASE  
3501 NW LOOP 820

LanCarte.com

DRONE PHOTOS

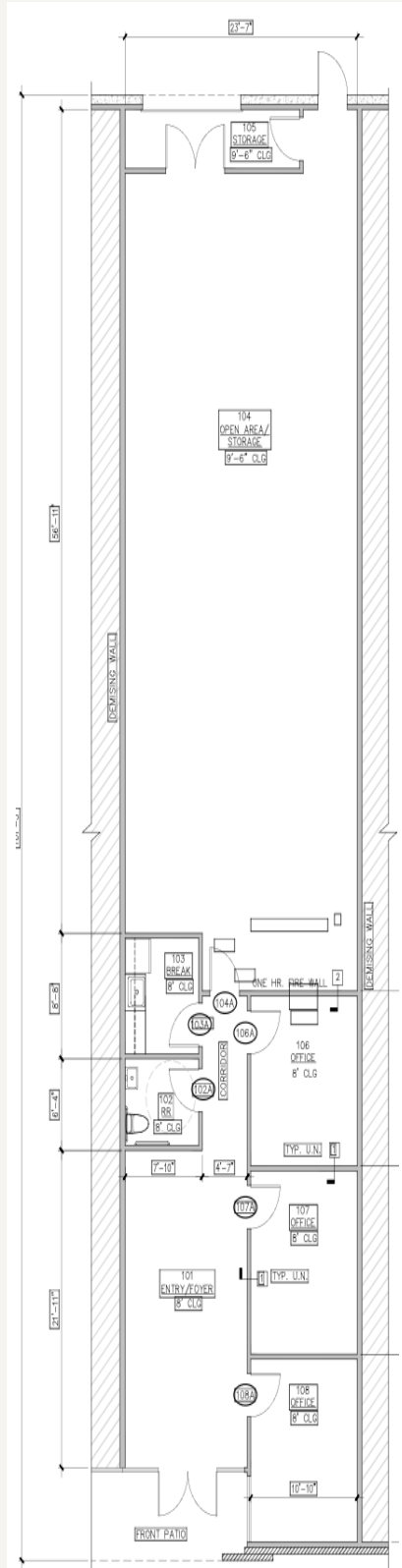


# Office/Flex ★ LEASE

3501 NW LOOP 820

LanCarte.com

## FLOOR PLANS



3501 NW LOOP 820  
SUITE 3519  
2,500 SF

**Office/Flex ★ LEASE**  
3501 NW LOOP 820

LanCarte.com

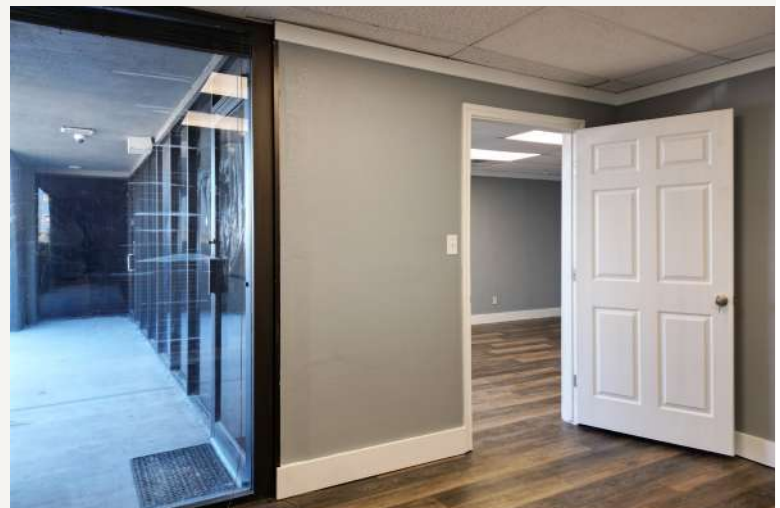
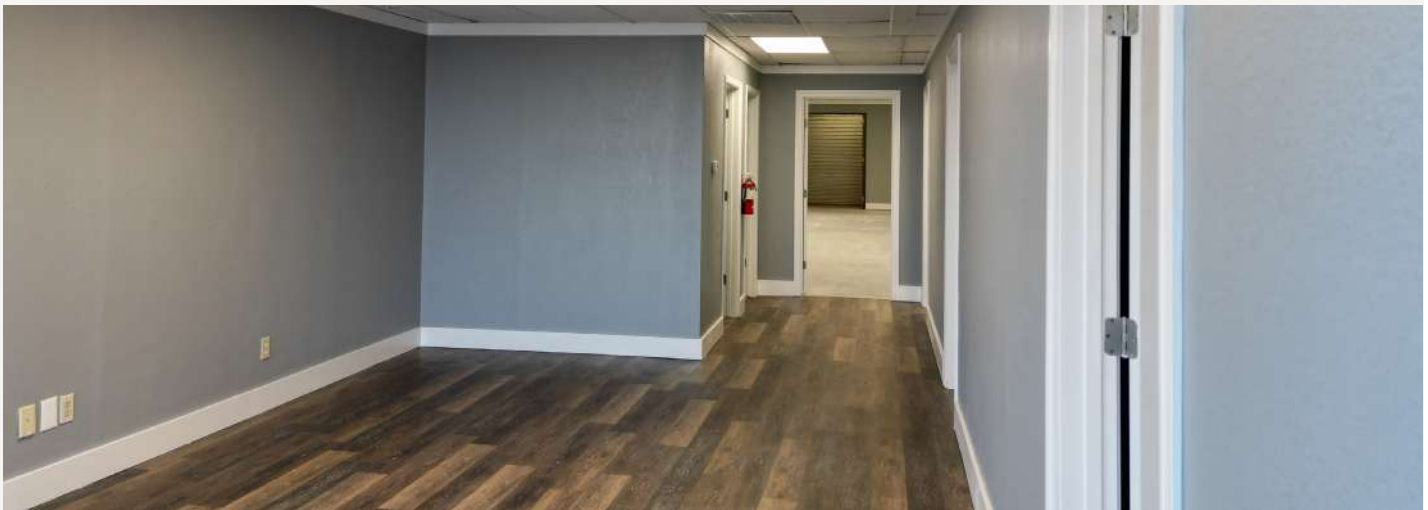
**INTERIOR**



**Office/Flex ★ LEASE**  
3501 NW LOOP 820

LanCarte.com

**INTERIOR**





LANCARTE  
COMMERCIAL

*Relentlessly Pursuing What Matters*

Riley Dow

817-681-2022 | [rdow@lancarte.com](mailto:rdow@lancarte.com)

Daniel Shelley

512-461-5363 | [dshelley@lancarte.com](mailto:dshelley@lancarte.com)

The information provided herein was obtained from sources believed to be reliable. However, LanCarte Commercial makes no guaranties, warranties or representations as to the completeness or accuracy thereof. The presentation of this property is submitted subject to errors, omissions, change of price or conditions, prior to sale or lease, or withdrawal without notice. Copyright 2026 LanCarte Commercial Real Estate, LLC.