

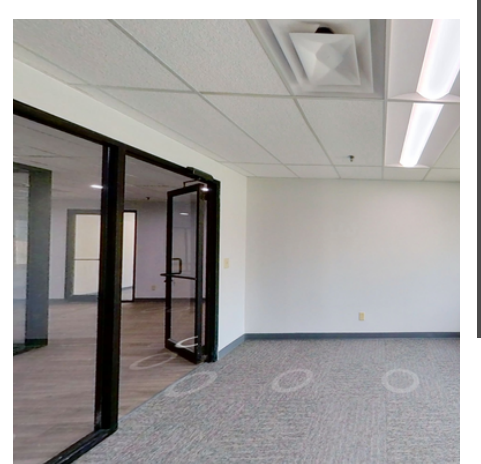
1440 Wakarusa Dr.,  
Suite 500

# MODERN OFFICE FOR RENT

(\$4,253 / month)  
(\$16 / SF)

## Key Features

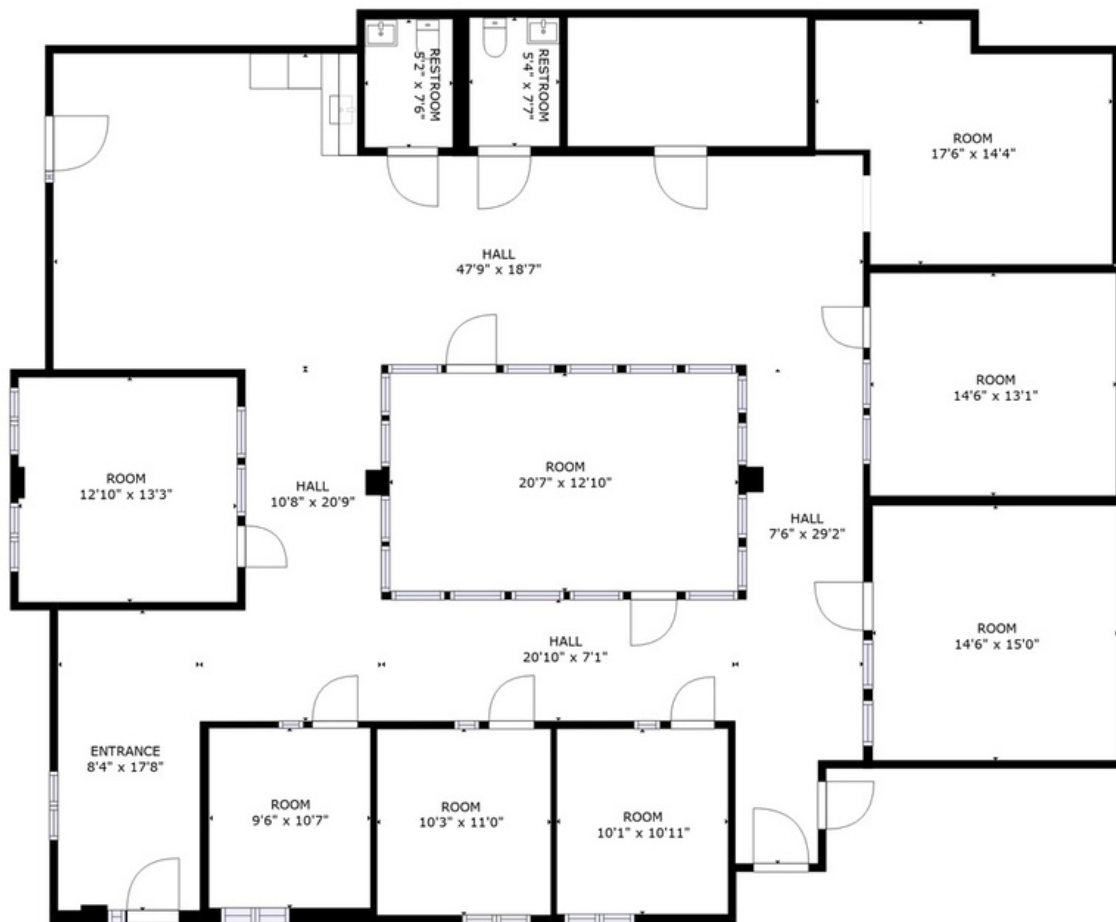
- > Bright Private Offices
- > Newly Remodeled
- > Planked Floors
- > Large Gathering Areas
- > Spacious Kitchenette
- > Large Parking Lot
- > 6 Private Offices
- > Natural Lighting
- > Large Conference Room
- > Exterior Signage Available



785-838-5550

[www.mprealtypartners.com](http://www.mprealtypartners.com)





## About the space

1440 Wakarusa Dr. offers spacious and modern offices for rent. Furnishings such as glass walls create a bright and welcoming atmosphere in each private office. Large gathering spaces throughout the office, as well as a kitchenette, serve as great meeting and relaxing venues.

1440 Wakarusa Dr. is located minutes from multiple highways and dining as well as main traffic ways. A large parking lot is also attached to the building for easier accessibility.



785-838-5550

[www.mprealtypartners.com](http://www.mprealtypartners.com)



# Property Highlights

Address: 1440 Wakarusa, Suite 500

---

Suite Size: 3,190 SF

---

Private Offices: 6

---

Private Restrooms: 2

---

Year Remodeled: 2022

---

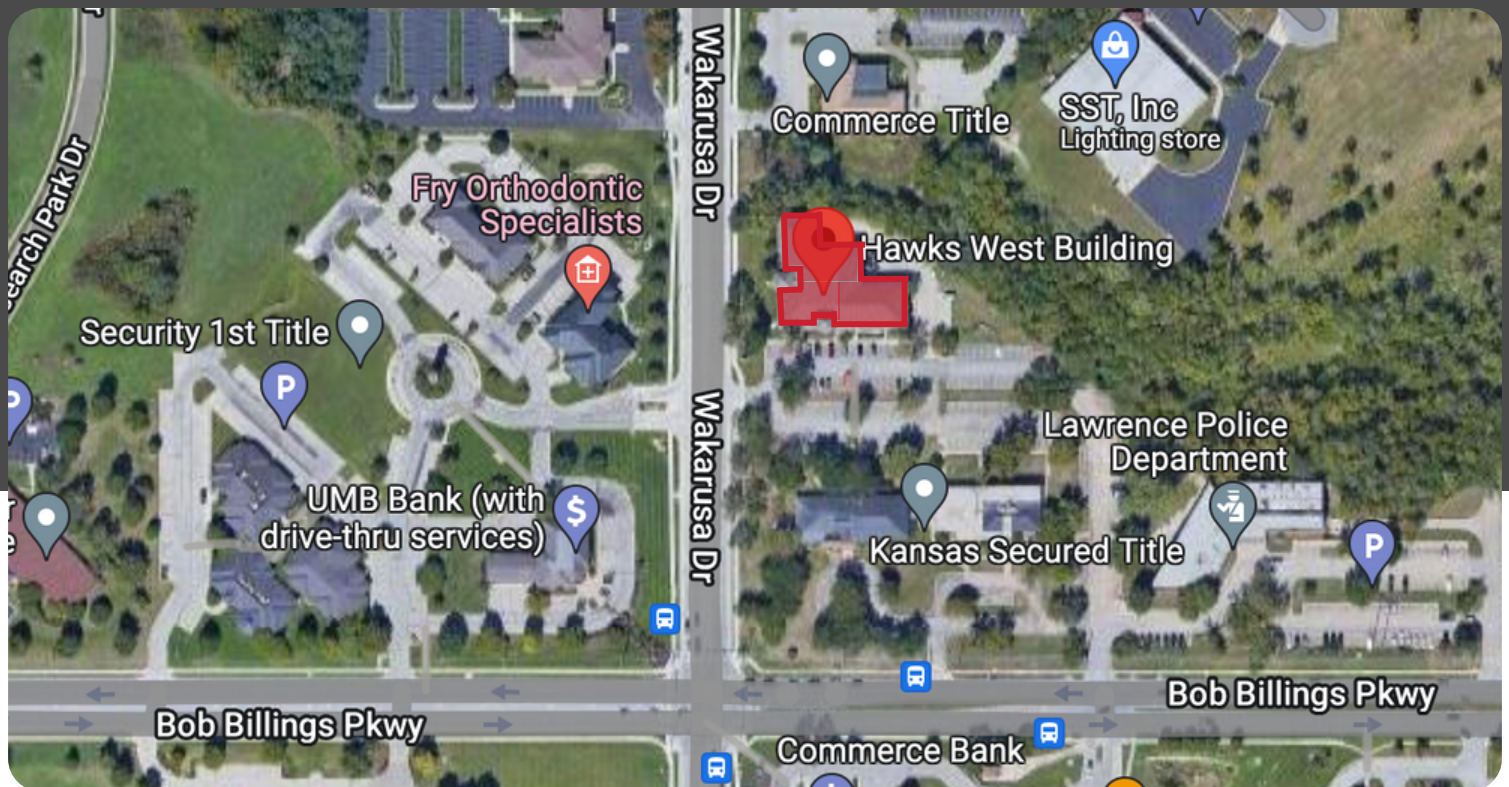
Utilities: Tenants pays

---

Rate : \$16 / SF Gross

---

## Aerial View



785-838-5550

[www.mprealtypartners.com](http://www.mprealtypartners.com)

