

910

17TH STREET NW

Office For Lease

574 - 8,965 SF



Leasing Information:
202.513.6700

Lincoln

Merrill Turnbull
202.513.6713
mturnbull@lpc.com

Adam Biberaj
202.513.6736
abiberaj@lpc.com

Alexander Cholet
202.513.6716
acholet@lpc.com

McKay Elliott
202.513.6724
melliott@lpc.com

Lincoln Property Company
101 Constitution Avenue NW, Suite 325 East
Washington, DC 20001

www.lpc.com



Availabilities	SF	Lease Rate	Date Available
Suite 100	2,419 SF	Negotiable	Immediately
Suite 210	1,580 SF	\$36.00 FS	Immediately
Suite 215	1,382 SF	\$36.00 FS	Immediately
Suite 220	2,690 SF	\$36.00 FS	Immediately
Suite 315	574 SF	Negotiable	Immediately
Suite 400	3,076 SF	Negotiable	Immediately
Suite 620	1,269 SF	Negotiable	Immediately
Suite 630	1,290 SF	Negotiable	Immediately
Suite 700	8,965 SF	Negotiable	Immediately
Suite 900	4,427 SF	Negotiable	Immediately
Suite 925	1,745 SF	Negotiable	Immediately
Suite 950	2,930 SF	Negotiable	Immediately

Property Highlights

- Brand-new spec suites recently delivered
- Located directly across from Farragut Square in the heart of the CBD submarket
- Farragut North Metro Station adjacent to building, just a one-minute walk away
- Unrivaled walkability to a plethora of nearby retail such as McCormick & Schmick's Seafood & Steak, BLT Steak DC, La Colombe and 1TO1 Fitness
- Opportunity for full floor build-out
- Flexible lease terms and competitive rental rates

Merrill Turnbull

202.513.6713
mturnbull@lpc.com

Adam Biberaj

202.513.6736
abiberaj@lpc.com

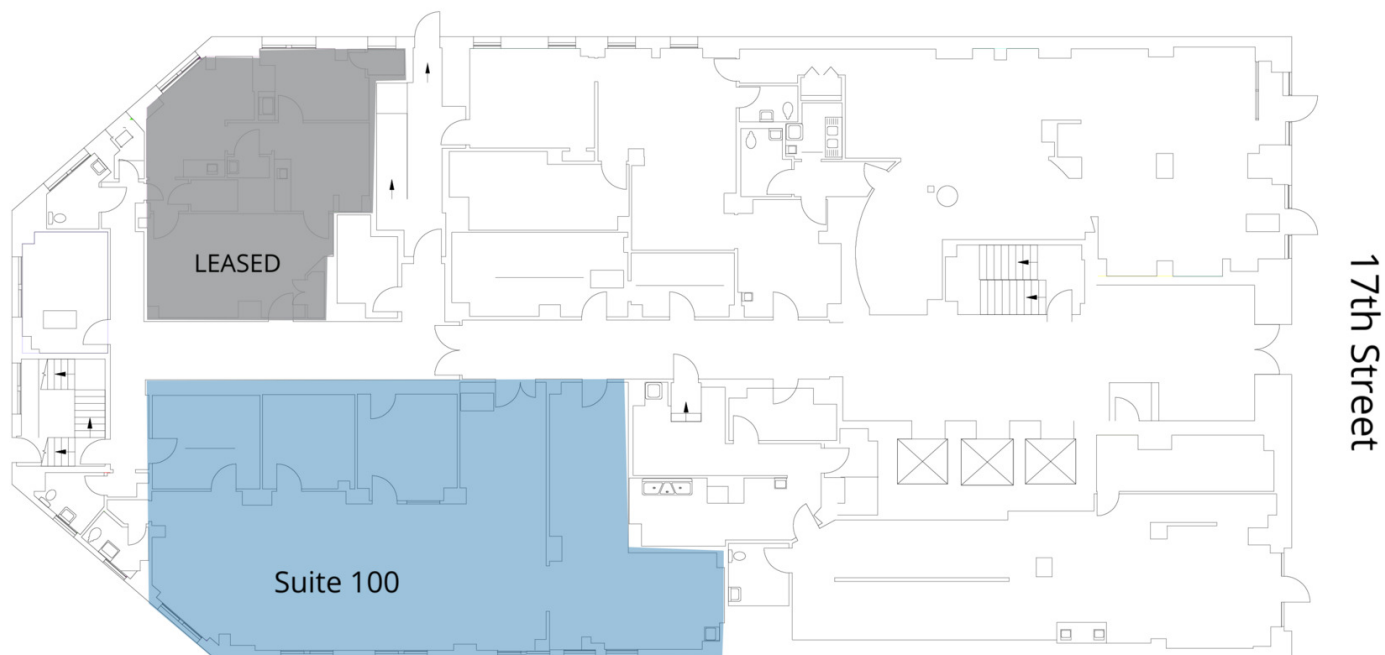
Alexander Cholet

202.513.6716
acholet@lpc.com

McKay Elliott

202.513.6724
melliott@lpc.com

Lincoln



Suite	Size	Description
■ Suite 100	2,419 SF	Available immediately.

Merrill Turnbull
202.513.6713
mturnbull@lpc.com

Adam Biberaj
202.513.6736
abiberaj@lpc.com

Alexander Cholet
202.513.6716
acholet@lpc.com

McKay Elliott
202.513.6724
melliott@lpc.com

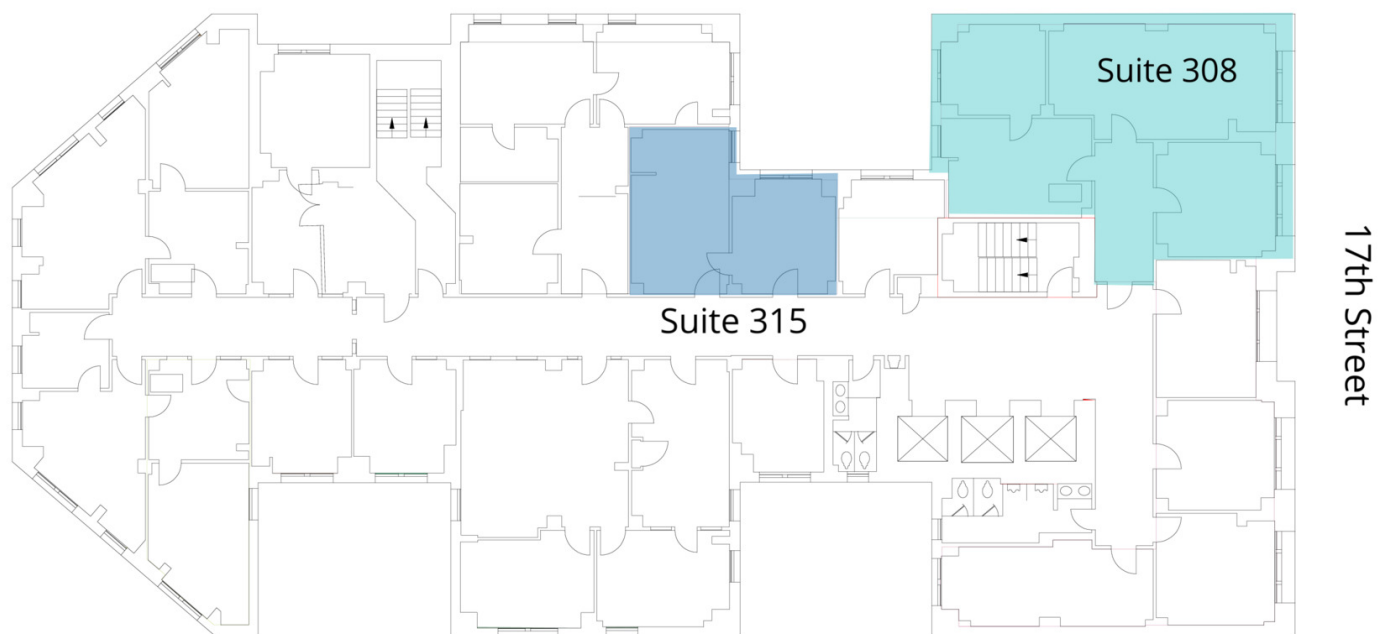
Lincoln



Suite	Size	Lease Rate	Description
■ Suite 210	1,580 SF	\$36.00 FS	Available immediately. Can be contiguous with Suite 220 or full floor.
■ Suite 215	1,382 SF	\$36.00 FS	Available immediately. Can be contiguous with Suite 200 or full floor
■ Suite 220	2,690 SF	\$36.00 FS	Available immediately. Can be contiguous with Suite 210 or full floor.

Merrill Turnbull 202.513.6713 mturnbull@lpc.com	Adam Biberaj 202.513.6736 abiberaj@lpc.com	Alexander Cholet 202.513.6716 acholet@lpc.com	McKay Elliott 202.513.6724 melliott@lpc.com
--	---	--	--

Lincoln



Suite	Size	Description
■ Suite 308	1,230 SF	Available immediately. Offices along 17th Street with park views & great elevator exposure.
■ Suite 315	574 SF	Two private offices available immediately.

Merrill Turnbull 202.513.6713 mturnbull@lpc.com	Adam Biberaj 202.513.6736 abiberaj@lpc.com	Alexander Cholet 202.513.6716 acholet@lpc.com	McKay Elliott 202.513.6724 melliott@lpc.com
--	---	--	--

Lincoln



Suite	Size	Description
■ Suite 400	3,076 SF	Available immediately.

Merrill Turnbull 202.513.6713 mturnbull@lpc.com	Adam Biberaj 202.513.6736 abiberaj@lpc.com	Alexander Cholet 202.513.6716 acholet@lpc.com	McKay Elliott 202.513.6724 melliott@lpc.com
---	--	---	---

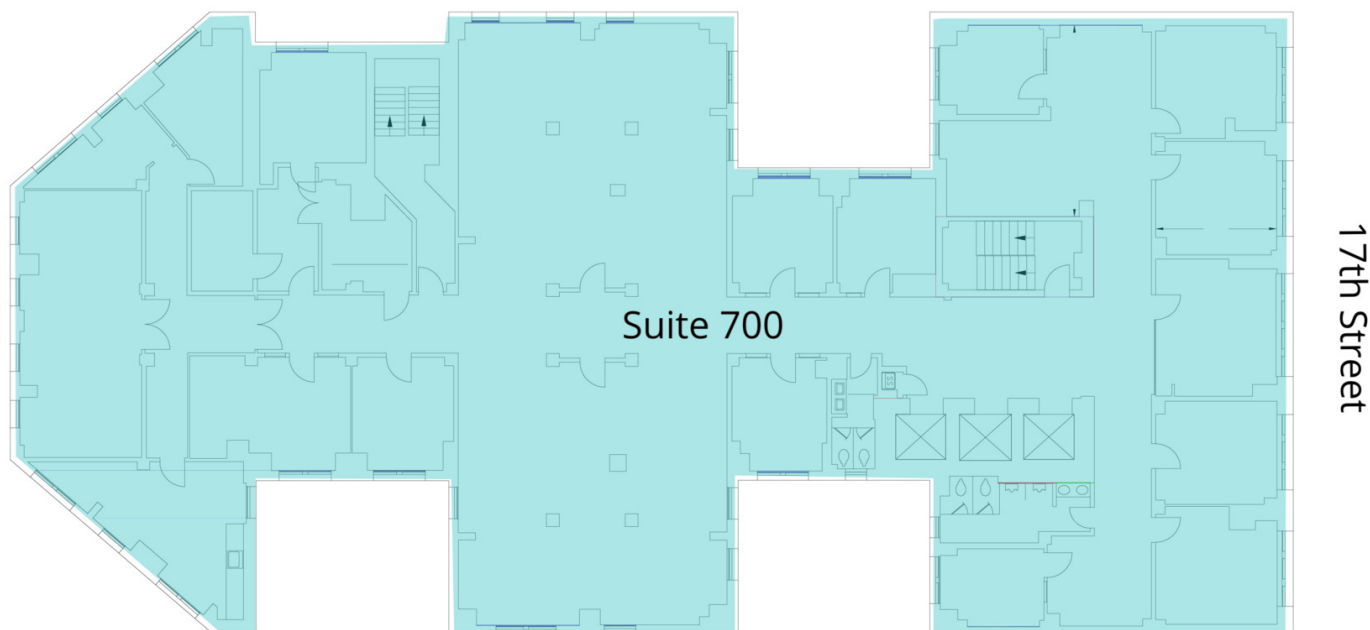
Lincoln



Suite	Size	Description
■ Suite 620	1,269 SF	Brand new spec suite recently delivered! With reception, open workspace, 1 private office and conference room.
■ Suite 630	1,290 SF	Brand new spec suite recently delivered! With window lined open workspace, conference and private office.

Merrill Turnbull 202.513.6713 mturnbull@lpc.com	Adam Biberaj 202.513.6736 abiberaj@lpc.com	Alexander Cholet 202.513.6716 acholet@lpc.com	McKay Elliott 202.513.6724 melliott@lpc.com
--	---	--	--

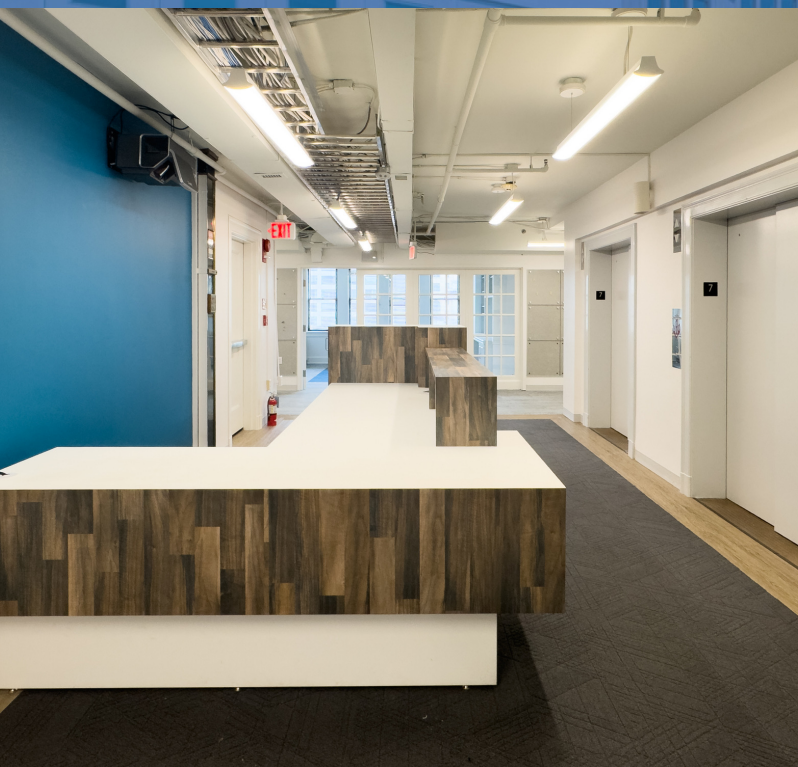
Lincoln



Suite	Size	Description
■ Suite 700	8,965 SF	Full floor opportunity available immediately. Move-in ready with a mix of office and open space.

Merrill Turnbull 202.513.6713 mturnbull@lpc.com	Adam Biberaj 202.513.6736 abiberaj@lpc.com	Alexander Cholet 202.513.6716 acholet@lpc.com	McKay Elliott 202.513.6724 melliott@lpc.com
--	---	--	--

Lincoln



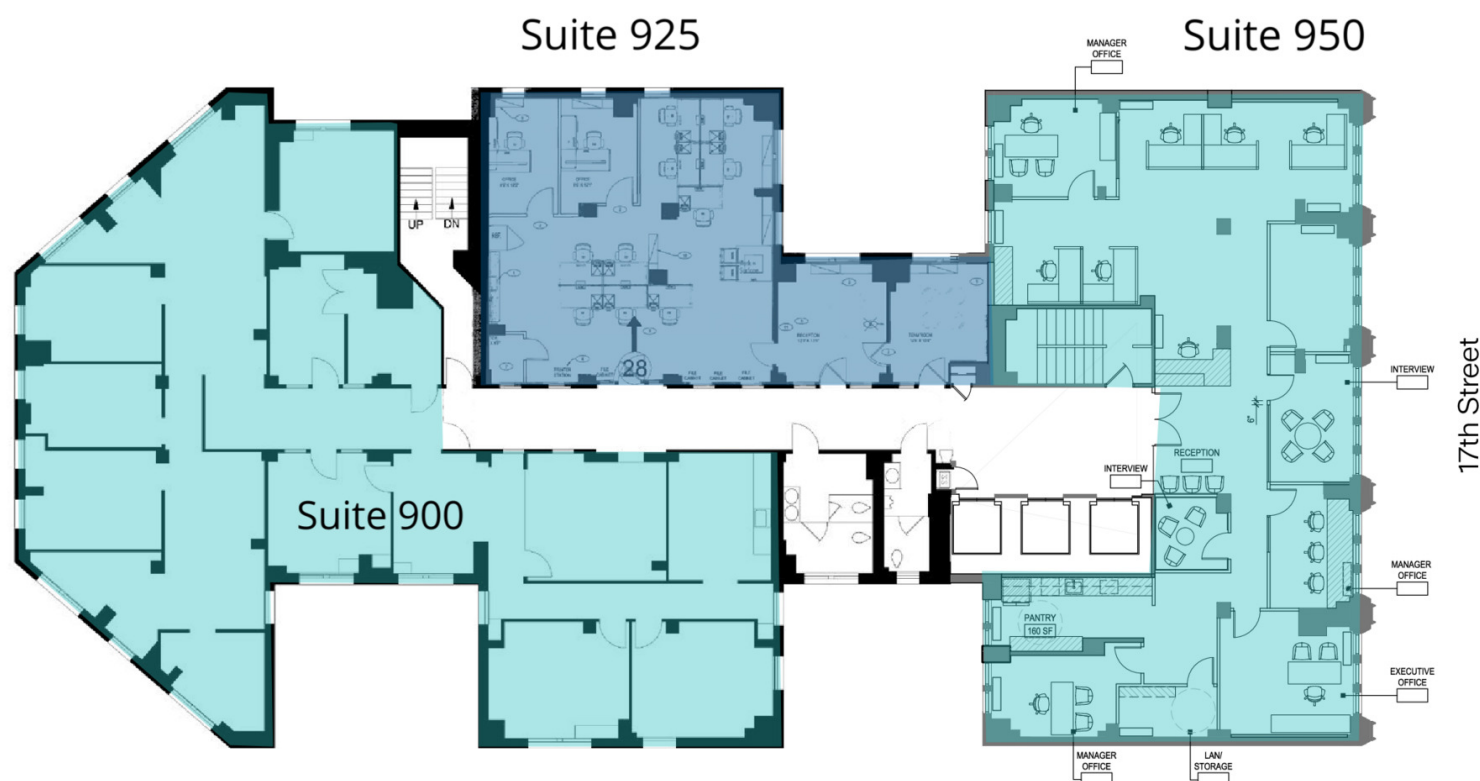
Merrill Turnbull
202.513.6713
mturnbull@lpc.com

Adam Biberaj
202.513.6736
abiberaj@lpc.com

Alexander Cholet
202.513.6716
acholet@lpc.com

McKay Elliott
202.513.6724
melliott@lpc.com

Lincoln



Suite	Size	Description
■ Suite 900	4,427 SF	Available immediately.
■ Suite 925	1,745 SF	Available immediately.
■ Suite 950	2,930 SF	Available Immediately. Front of building with Farragut Square views. Good relet condition.

Merrill Turnbull 202.513.6713 mturnbull@lpc.com	Adam Biberaj 202.513.6736 abiberaj@lpc.com	Alexander Cholet 202.513.6716 acholet@lpc.com	McKay Elliott 202.513.6724 melliott@lpc.com
--	---	--	--

Lincoln

910

17TH STREET NW

Nearby Amenities



Map
data
©2026
Google

Merrill Turnbull

202.513.6713
mturnbull@lpc.com

Adam Biberaj

202.513.6736
abiberaj@lpc.com

Alexander Cholet

202.513.6716
acholet@lpc.com

McKay Elliott

202.513.6724
melliott@lpc.com

Lincoln



910

17TH STREET NW

Leasing Information:
202.513.6700

Merrill Turnbull
202.513.6713
mturnbull@lpc.com

Adam Biberaj
202.513.6736
abiberaj@lpc.com

Alexander Cholet
202.513.6716
acholet@lpc.com

McKay Elliott
202.513.6724
melliott@lpc.com

Lincoln

Lincoln Property Company
101 Constitution Avenue NW, Suite 325 East
Washington, DC 20001

www.lpc.com