



3100

CLARENDON

Welcome to  
*your new workplace*

3100  
CLARENDON



# Award-winning office space

*in the middle of it all*

3100 Clarendon offers the ultimate office experience with thoughtfully designed amenities and luxurious finishes to cater to your every need.

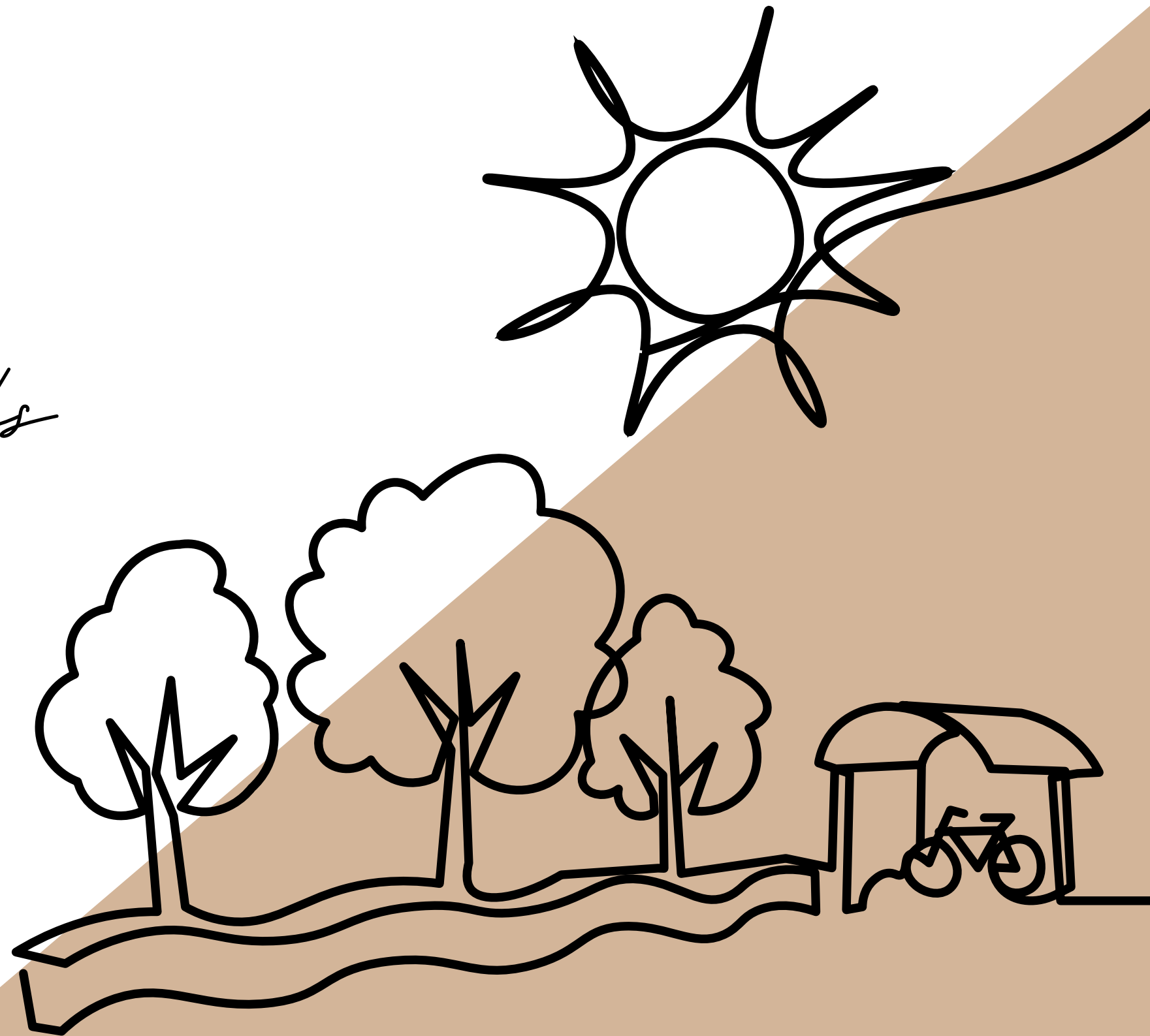
A beacon in the Arlington skyline, our building is the epitome of work-life balance providing an engaging environment that fosters collaboration, productivity, and wellness.



# Ample amenities

*built for all your needs*

- The Outlook, private rooftop garden terrace located on the third floor
- Fitness facility with spa-quality lockers and showers
- Conference facility with pre-function lounge
- Direct Metro access to Clarendon Station
- Activated plaza with on-site and nearby food and beverage retailers featuring cozy overhead lighting
- Secured bicycle storage



# Exceptional

*Trophy Lobby*





# Inviting *outdoor terrace*



# Convenient

*fitness facility*





# Luxurious

*locker rooms*

# Accessible

*direct access to metro*



# Dedicated

*pre-function lounge*



# Collaborative

*conference space (seats up to 46)*







Trendy  
*urban-like destination*



# Abundant *dining options*





# Unobstructed views

*RB Corridor to Washington, DC*





# Discover your new space

*click below to navigate to desired suite*

SUITE	SF	NOTES	VIRTUAL TOUR
Suite 300*	9,090 SF	Partial Floor; Shell Condition	-
Suite 340*	1,733 SF	Partial Floor; Pre-Built	-
Suite 400	16,523 SF	Full Floor; Pre-Built	
Suite 900	7,695 SF	Divisible to ~3K SF; Available May 2027	-
Suite 1100	7,633 SF	Partial Floor; Shell Condition	

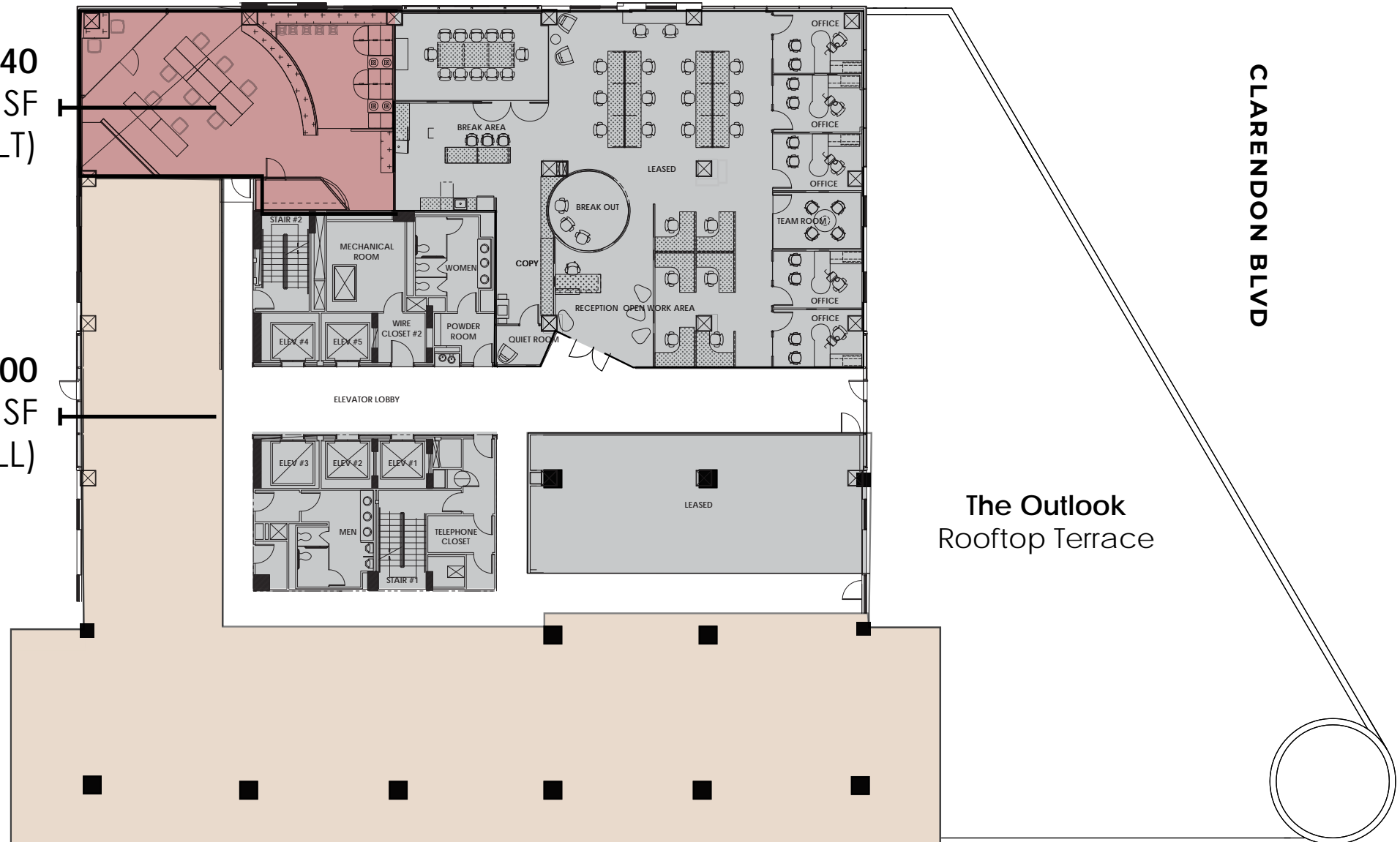
*\*10,823 SF Contiguous Space available on third floor*

# 3rd Floor 10,823 sf

*contiguous*

Suite 340  
1,733 SF  
(PRE-BUILT)

Suite 300  
9,090 SF  
(SHELL)



# 4th Floor 16,523 sf

*pre-built*

Scan or click  
for virtual tour

Suite 400

19 Offices

42 Workstations\*

1 Boardroom

2 Conference Rooms

2 Huddles

Reception

Kitchen

\*Hypothetical furniture suggestion



VIEWS OF  
WASHINGTON, DC

CLARENDON BLVD





**4th Floor  
16,523 sf**



# 9th Floor 7,695 sf

*pre-built*

divisible to ~3,000 sf  
available May 2027

- Suite 900
- 9 Offices
- Open Workspace
- 2 Conference
- 2 Kitchens
- Huddle Spaces



CLARENDON BLVD

VIEWS OF  
WASHINGTON, DC

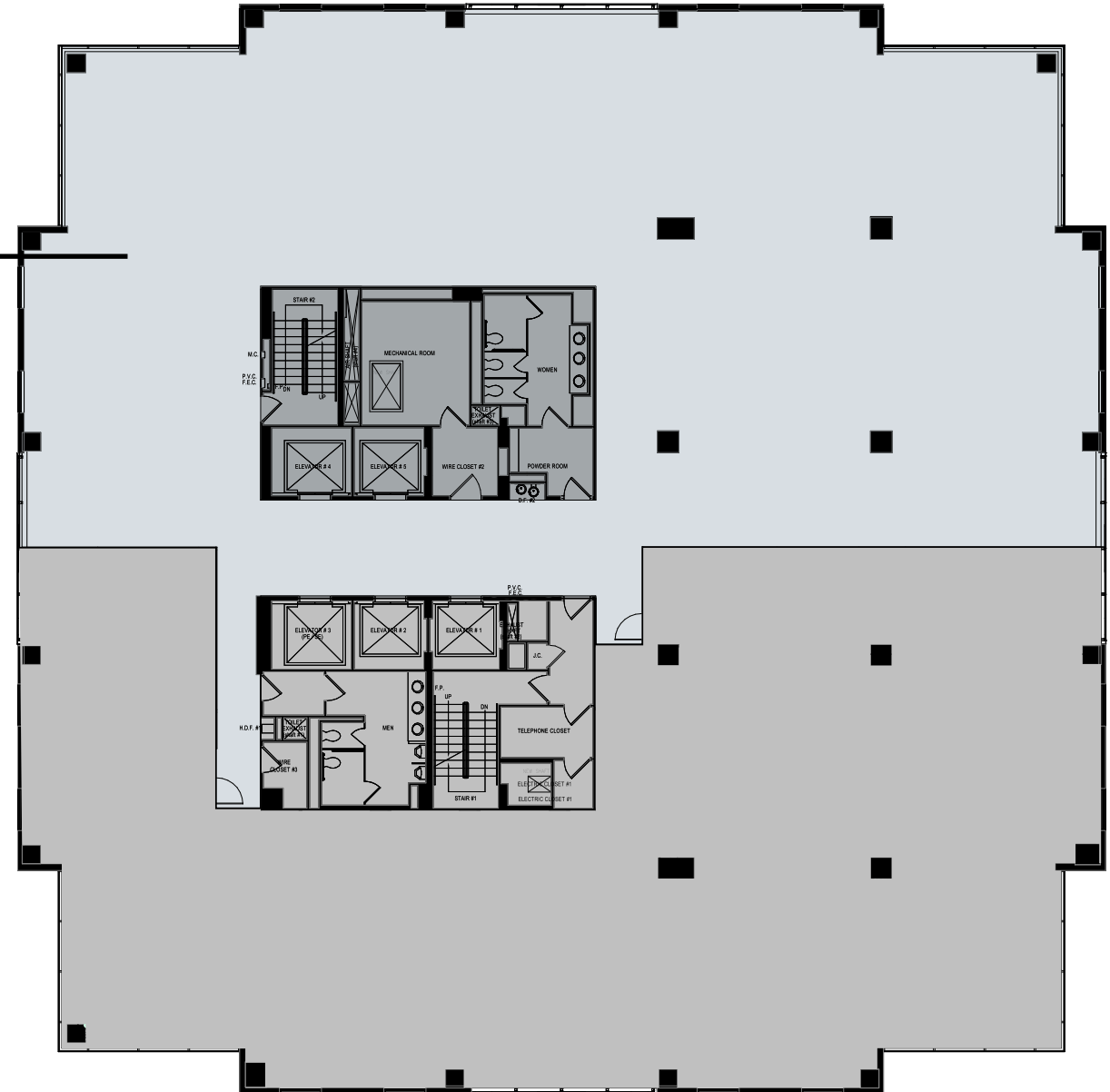


# 11th Floor 7,633 sf

*shell condition*

Scan or click  
for virtual tour

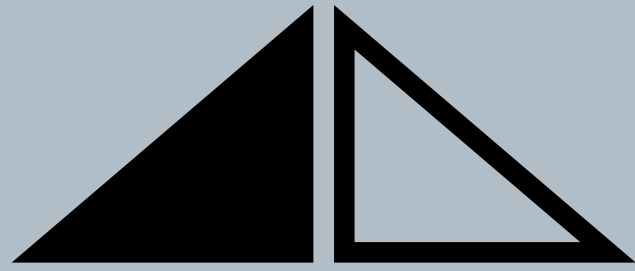
Suite 1100  
7,633 SF  
(SHELL)



CLARENDON BLVD

VIEWS OF  
WASHINGTON, DC





# 3100 CLARENDON

*your leasing team*

**Peter Berk | Principal**  
703 752 4920  
peter.berk@avisonyoung.com

**Nick Gregorios | Principal**  
703 752 4922  
nicholas.gregorios@avisonyoung.com

**Wesley Preuss | Principal**  
202 644 8691  
wesley.preuss@avisonyoung.com

**Natalie Morhun | Associate**  
202 644 8682  
natalie.morhun@avisonyoung.com

**avisonyoung.com**

8300 Greensboro Drive, Suite 275  
Tysons, VA 22102  
703 288 2700

