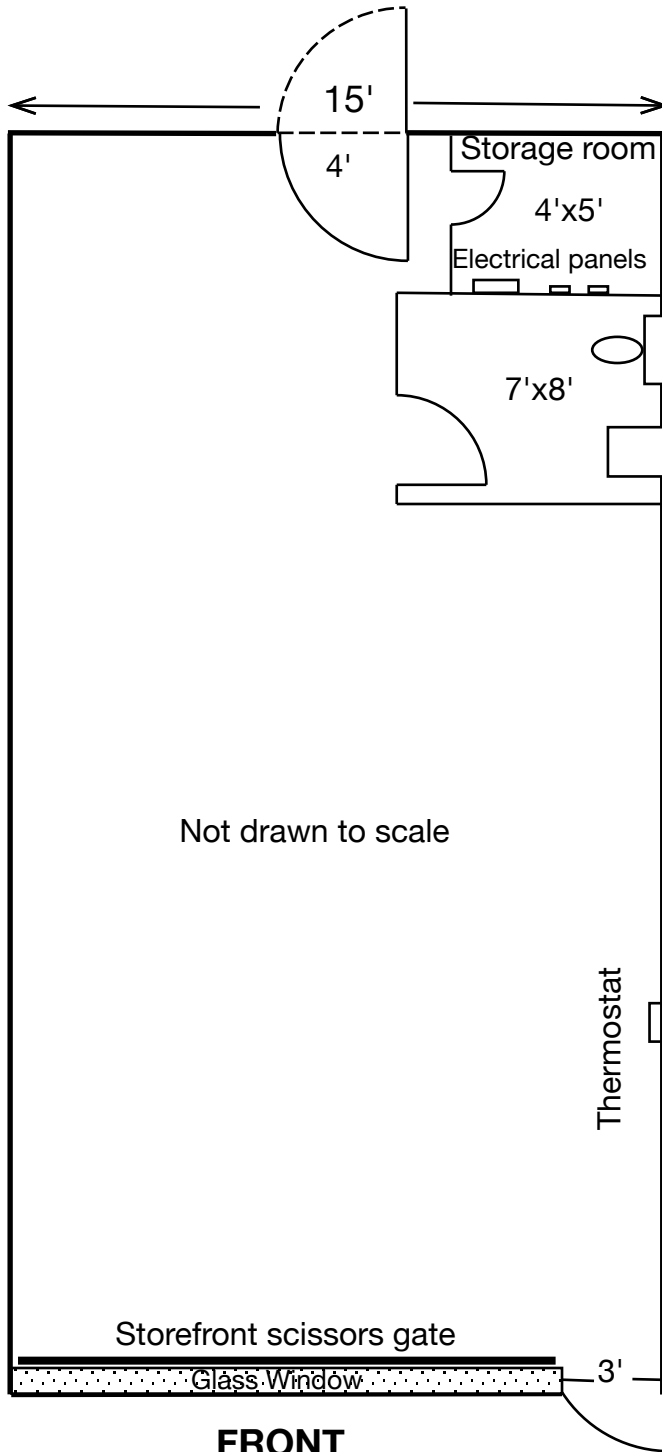


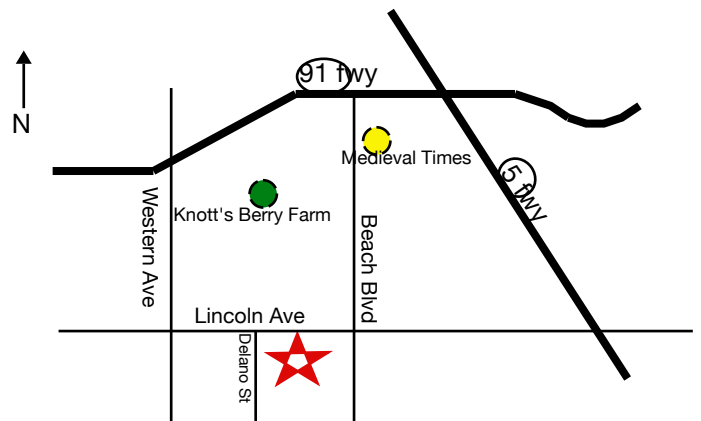
LINCOLN PLAZA

3050 W. Lincoln Avenue, Suite C, Anaheim 92801



FEATURES:

- Frontage retail unit on Lincoln Ave.
- Ceiling height approximately 10ft
- Large directory sign available
- Rear gate access
- New central HVAC/LED light panels
- Approximately 27,000 traffic count per day, since 2007



SCAN BELOW
FOR UP-TO-DATE
INFO ON WEBSITE



www.SDAssociatesProperties.com

updated 8-9-23

CONTACT Property Manager, Salila Limolansuksakul, at (714)997-7956 ext 102

S&D ASSOCIATES LEASING OFFICE: 1020 N. BATAVIA ST. STE. B, ORANGE, CA 92867
TEL 714/997-7956 * FAX 714/997-4930 * EMAIL: SDASSOCIATES@SBCGLOBAL.NET