



Specifications

±8,750 SF TOTAL BUILDING SIZE	2 Drive-Ins LOADING
±1.91 AC TOTAL ACREAGE	±14' CEILING HEIGHT
±3,250 SF on 0.54 AC AVAILABLE SPACE (UNIT A)	Wet SPRINKLER SYSTEM
±5,500 SF on 1.37 AC AVAILABLE SPACE (UNIT B)	
Gas Suspended HEAT	
\$15,597 Per Annum TAXES	
Light Industrial L-I ZONING	
14.9 Miles to I-78	
15.5 Miles to Newark Airport	
19.8 Miles to Ports Newark/Elizabeth	
ACCESSIBILITY	

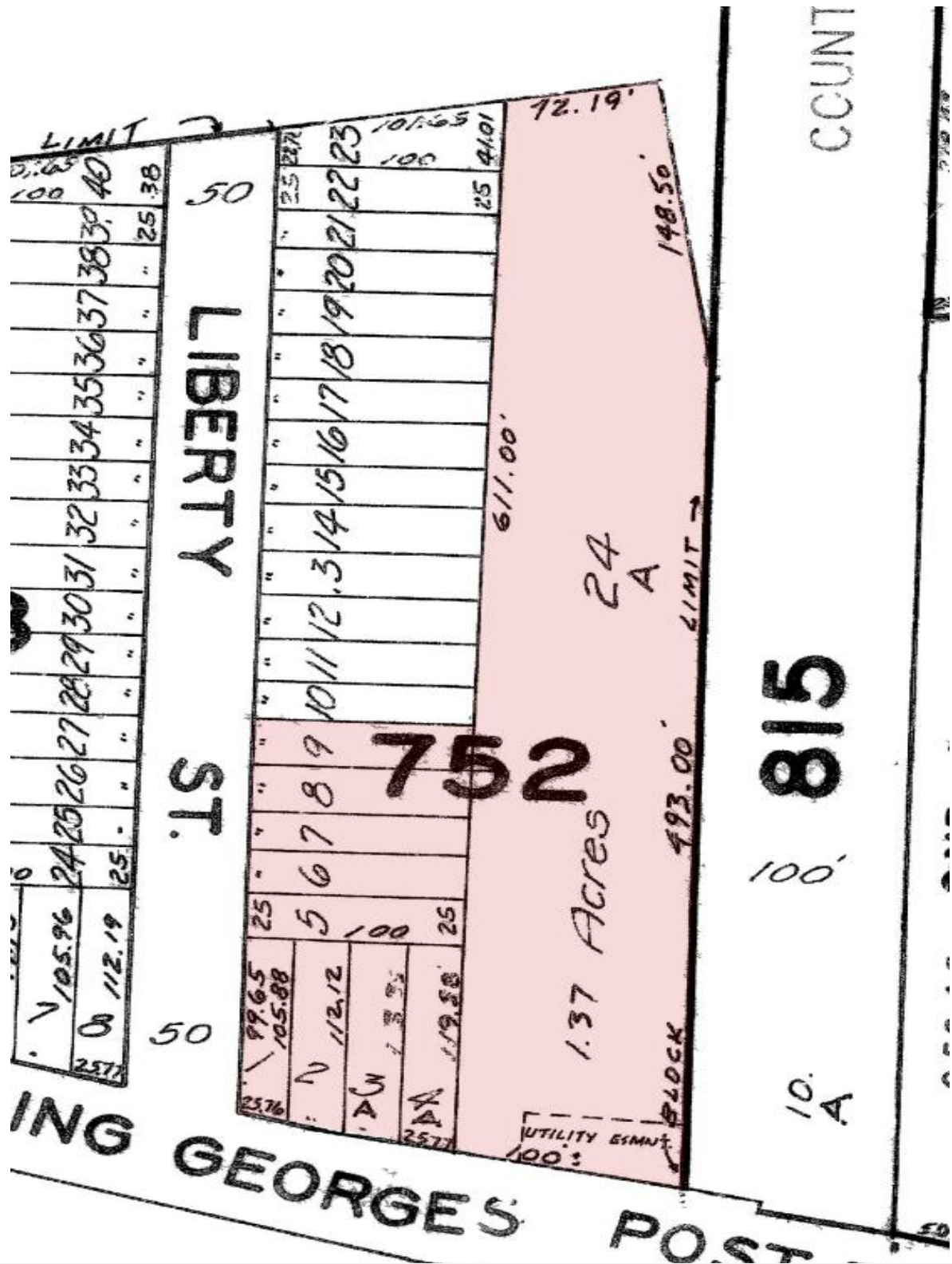
For additional property information or to arrange an inspection, please contact the exclusive brokers:

Kenneth F. Crimmins, CCIM, SIOR  
Chairman & CEO  
201.707.1105  
kfcrimmins@blauberg.com

Jason M. Crimmins, CCIM, SIOR  
President  
973.568.6611  
jmcrimmins@blauberg.com

Laura L. Crimmins, SIOR  
Executive Director  
973.479.1418  
lcrimmins@blauberg.com



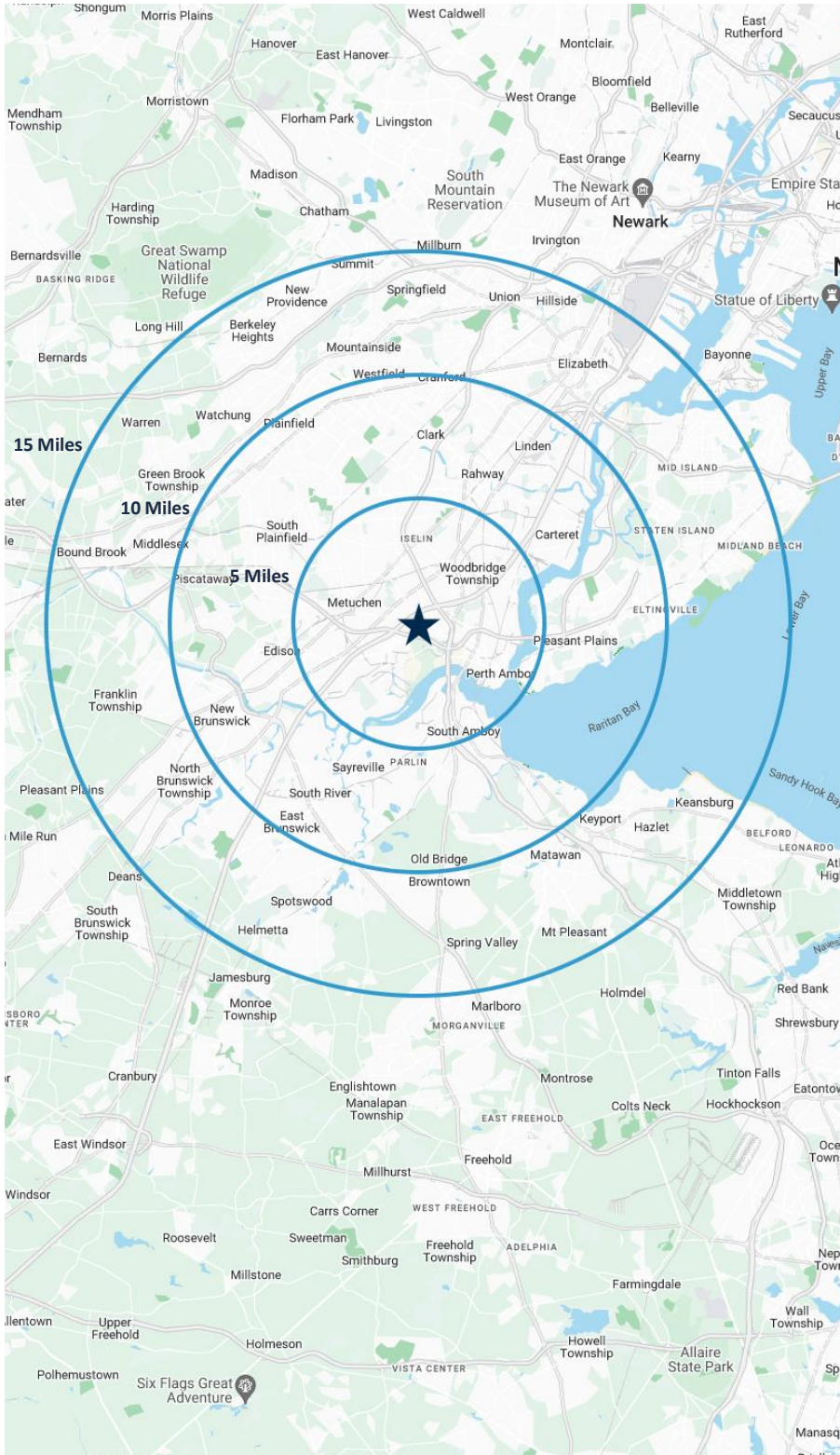


For additional property information or to arrange an inspection, please contact the exclusive brokers:

Kenneth F. Crimmins, CCIM, SIOR  
 Chairman & CEO  
 201.707.1105  
 kfcrimmins@blauberg.com

Jason M. Crimmins, CCIM, SIOR  
 President  
 973.568.6611  
 jmcrimmins@blauberg.com

Laura L. Crimmins, SIOR  
 Executive Director  
 973.479.1418  
 lcrimmins@blauberg.com



### 5 MILES

- Total Population: 312,169
- Households: 109,458
- Median Household Income: \$112,937
- Average Household Size: 2.8
- Transportation to Work: 166,809
- Labor Force: 254,381

### 10 MILES

- Total Population: 1.23M
- Households: 431,255
- Median Household Income: \$114,389
- Average Household Size: 2.8
- Transportation to Work: 655,496
- Labor Force: 1M

### 15 MILES

- Total Population: 2.41M
- Households: 856,022
- Median Household Income: \$115,849
- Average Household Size: 2.8
- Transportation to Work: 1.27M
- Labor Force: 1.97M

For additional property information or to arrange an inspection, please contact the exclusive brokers:

Kenneth F. Crimmins, CCIM, SIOR  
*Chairman & CEO*  
201.707.1105  
kfcrimmins@blauberg.com

Jason M. Crimmins, CCIM, SIOR  
*President*  
973.568.6611  
jmcrimmins@blauberg.com

Laura L. Crimmins, SIOR  
*Executive Director*  
973.479.1418  
lcrimmins@blauberg.com



