



OFFICE OR MEDICAL SPACE FOR LEASE

5999 NEW WILKE RD BLDG 1 ROLLING MEADOWS IL

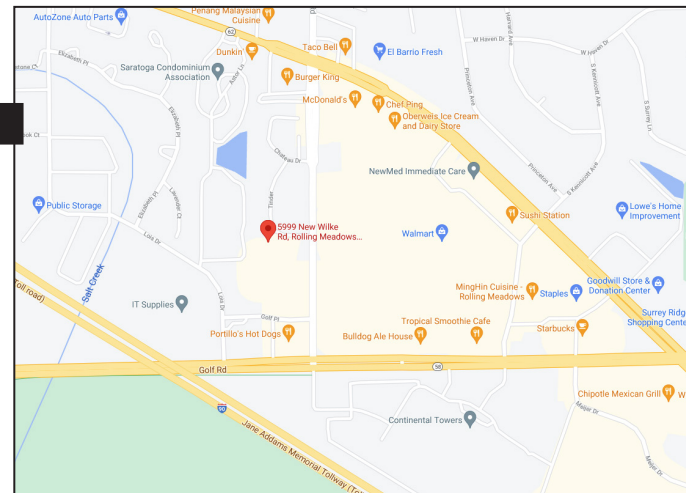


BUILDING FEATURES:

- 1,170 SF Available Immediately (Last Vacant Space!)
- Located just North of stoplight intersection of New Wilke Rd & Golf Rd
- Minutes from RT 53 & I-90
- Tenant controlled HVAC & 24-hour tenant access
- Comcast high-speed internet and cable available
- Beautifully landscaped with fountain and pond
- New Building Ownership & Property Management
- High-end buildouts
- 24 Hour Tenant Access & Tenant Control HVAC
- Operable windows & tenant signage available
- Asking Rent: \$16.50-\$18.00 PSF Modified Gross

AVAILABLE SPACE:

BLDNG #1	SIZE	Available
101	1,170 SF	2 privates & open space



FOR MORE INFORMATION:

RANDY OLCZYK
 President/Principal
 Direct: 847.246.9611
 randy@chicagolandcommercial.com

RAY OKIGAWA
 Senior Vice President
 Direct: 847.246.9632
 ray@chicagolandcommercial.com



Chicagoland
Commercial
 REAL ESTATE

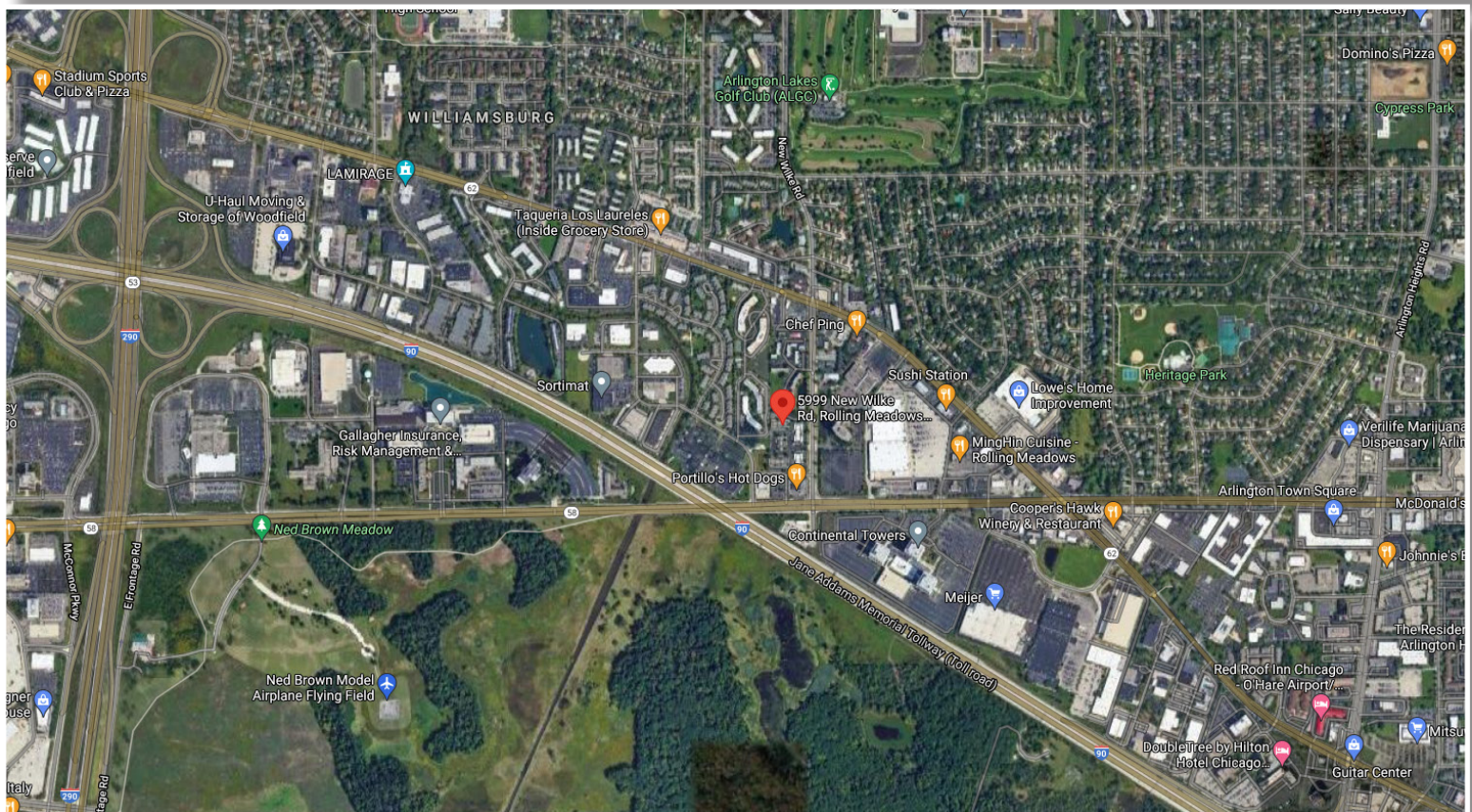
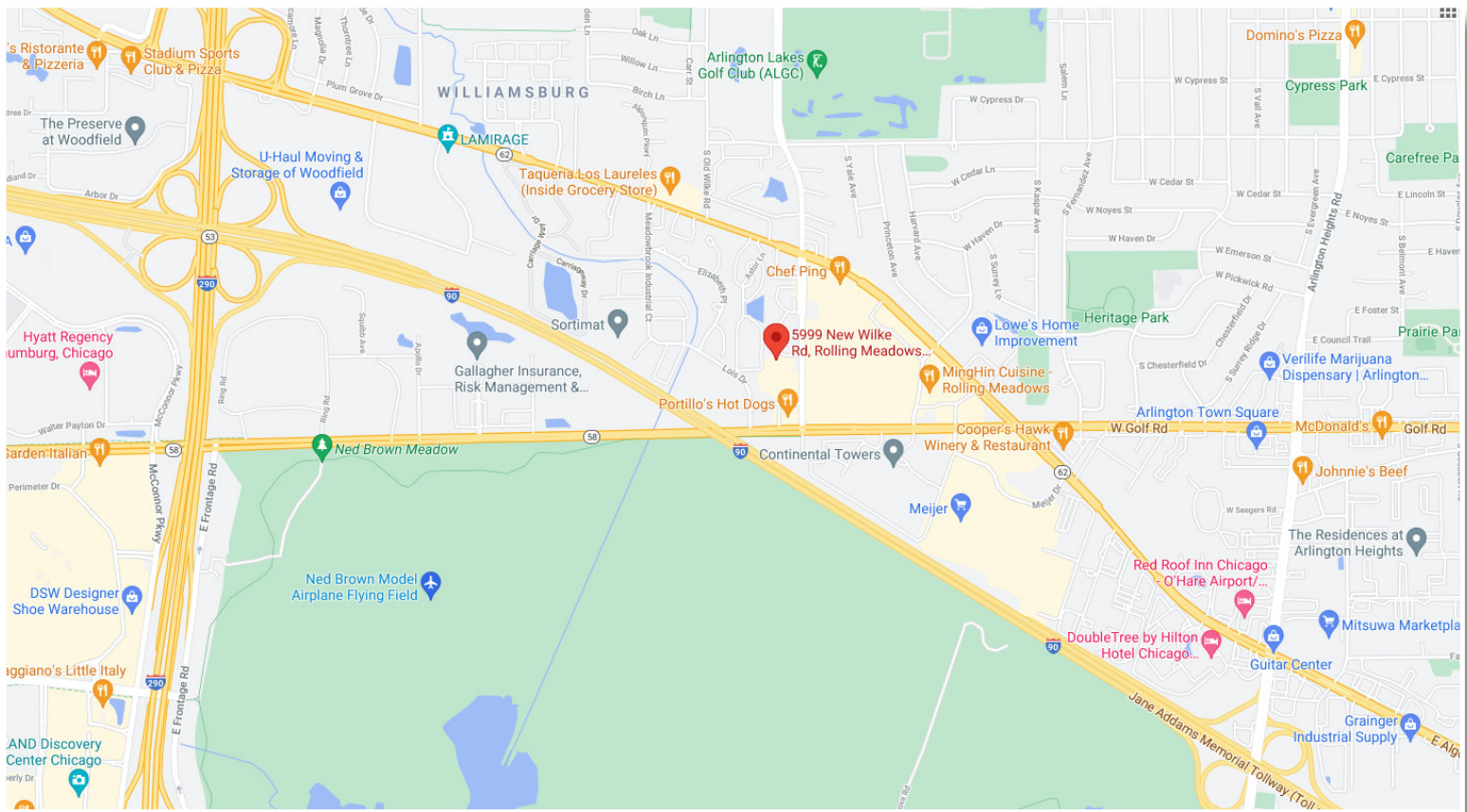
4811 Emerson Ave Suite 112, Palatine, IL



OFFICE OR MEDICAL SPACE FOR LEASE

5999 New Wilke Rd Bldg I Rolling Meadows IL

AREA MAPS





OFFICE OR MEDICAL SPACE FOR LEASE

5999 NEW WILKE RD BLDG I ROLLING MEADOWS IL

BUILDING PHOTOGRAPHS



SPACE AVAILABLE FROM 1,000-6,000 SF

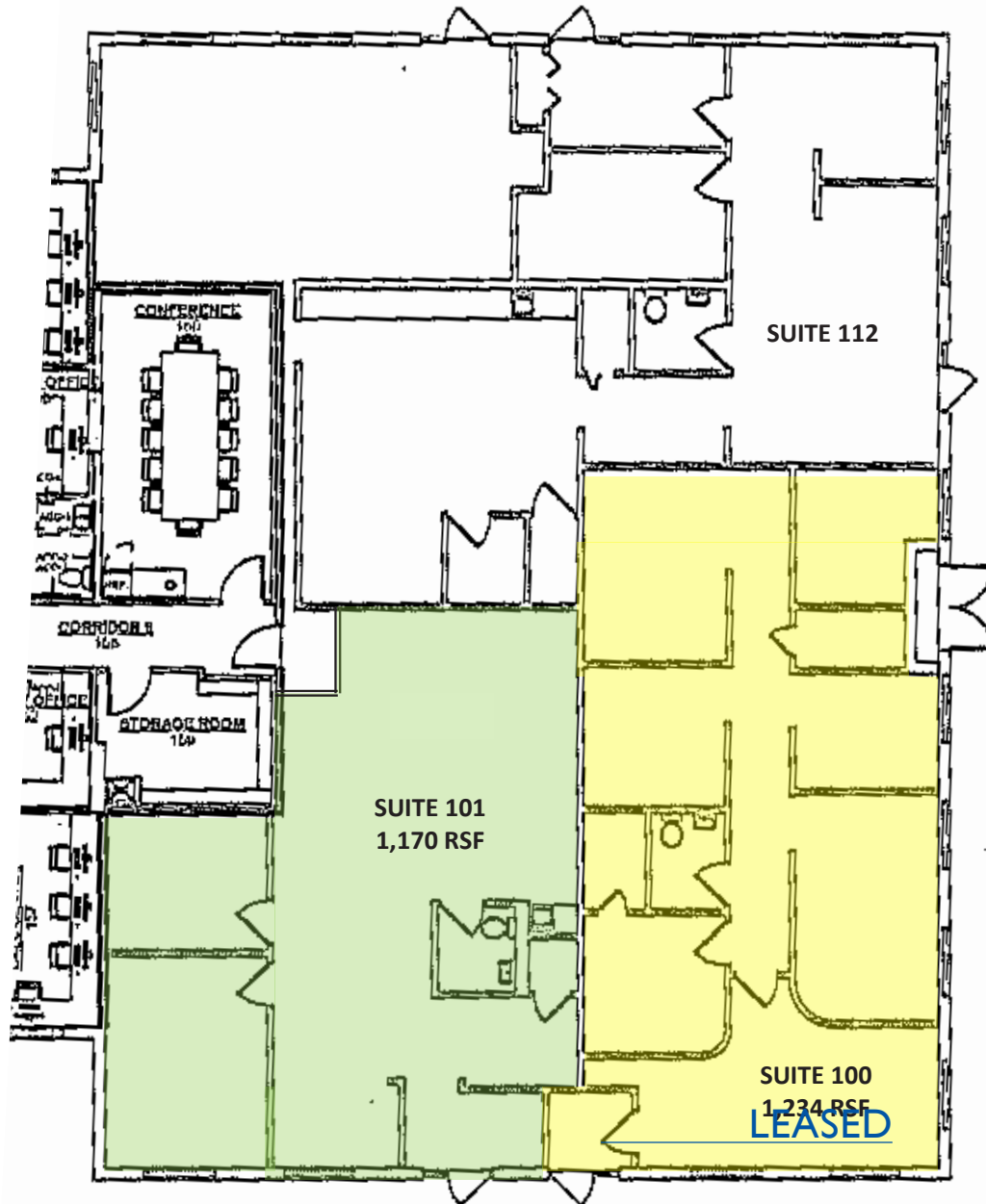




OFFICE OR MEDICAL SPACE FOR LEASE

5999 NEW WILKE RD BLDG I ROLLING MEADOWS IL

SUITE 101 1,170 SF



SUITE 101 (1,170 SF)