

5,420 SF
(DIVISIBLE)



AVAILABILITY

- 606 SF - 5,420 SF Available
- 2nd Floor
- Flexible Layout Options

OFFICE AND RETAIL SPACE FOR LEASE

- Newly Renovated
- Zoning: C4 - Ideal for Office and Retail
- Elevator Access & Dedicated Onsite Parking
- Signage Available
- Rare Downtown Opportunity in Purcellville's Historic District
 - Prime Location & Charm: Located in the heart of Loudoun County, Purcellville blends small-town charm with modern business potential.
 - Vibrant Community: A thriving historic district with a walkable downtown, vibrant restaurant scene, and strong community spirit.
 - Business Advantages: Enjoys steady foot traffic, proximity to Route 7, and a business-friendly environment—ideal for offices, boutique retailers, and service providers.
 - Appealing Surroundings: Surrounded by wineries, outdoor recreation, and a growing residential market, offering both local and regional appeal.

TYLER CUMBERLAND

tcumberland@klnb.com | 703-268-2720

BILLY KELLY

bkelly@klnb.com | 703-268-2706

JEFF TARAE

jtarae@klnb.com | 703-268-2741

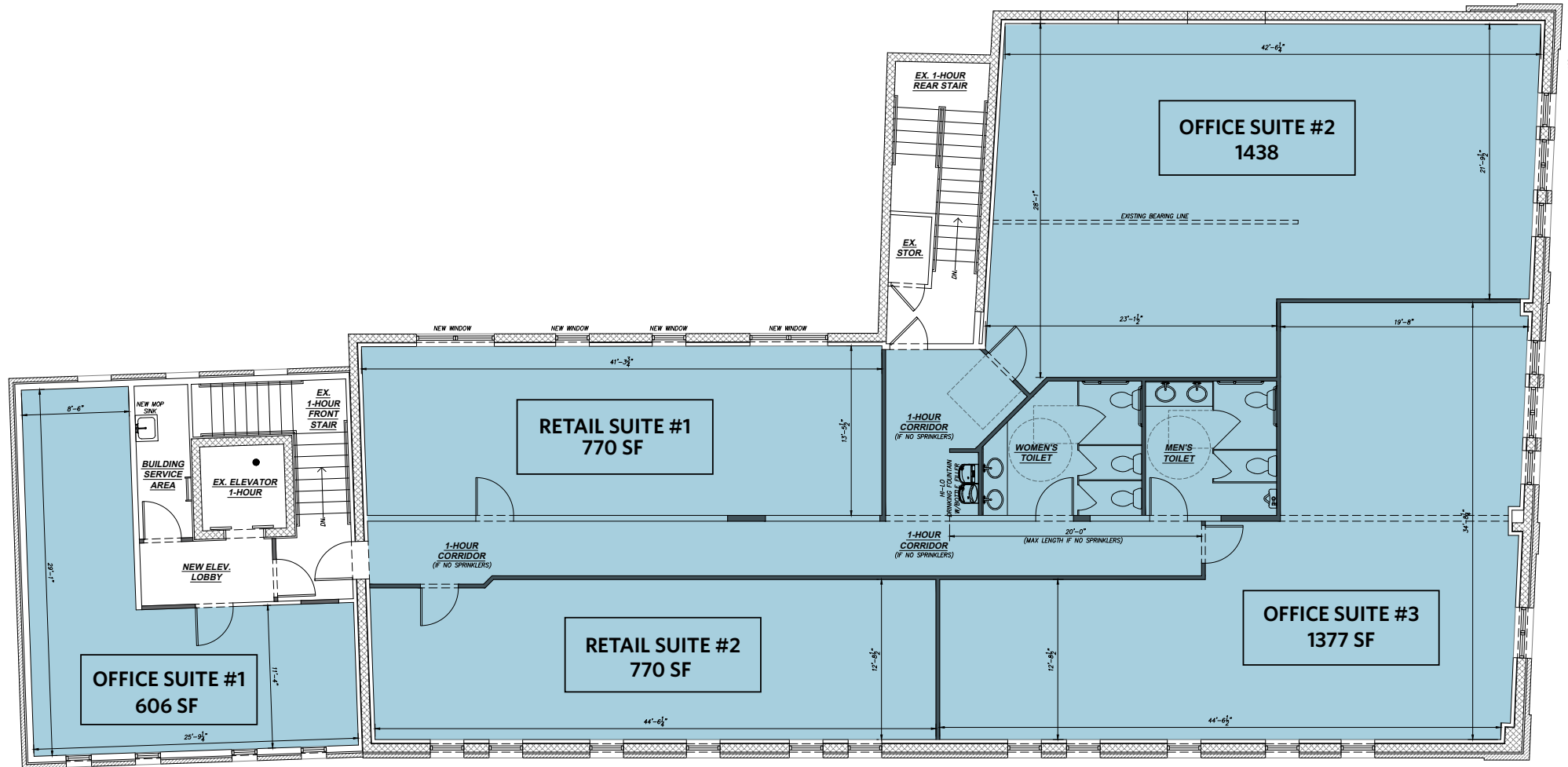
klnb.com

FLOOR PLAN

151 W MAIN STREET

PURCELLVILLE, VA 20132, LOUDOUN COUNTY

CONCEPTUAL UPPER-LEVEL OFFICE LAYOUT



TYLER CUMBERLAND

tcumberland@klnb.com | 703-268-2720

BILLY KELLY

bkelly@klnb.com | 703-268-2706

JEFF TARAE

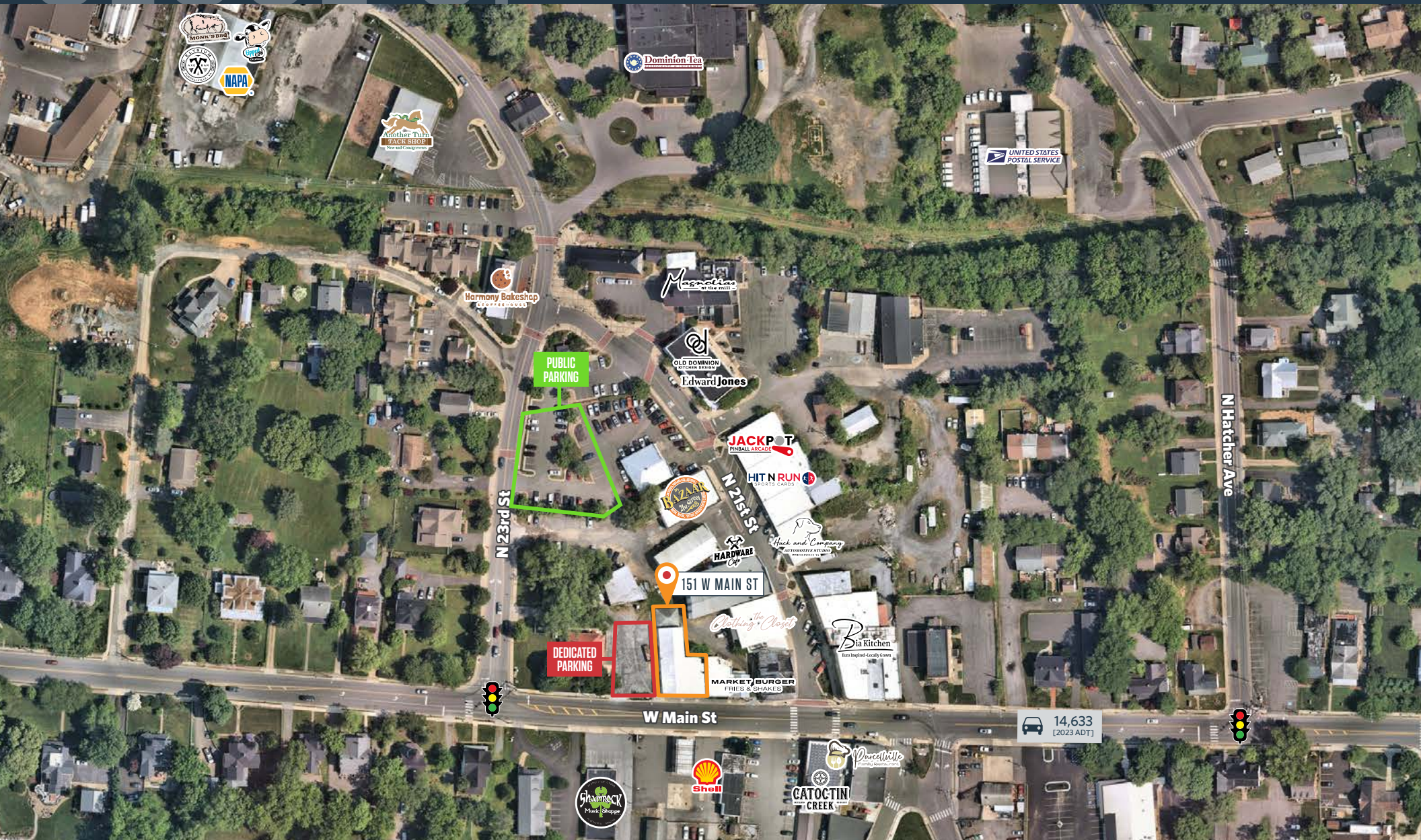
jtarae@klnb.com | 703-268-2741

NAI klnb

CLOSE UP

151 W MAIN STREET

PURCELLVILLE, VA 20132, LOUDOUN COUNTY



TYLER CUMBERLAND

tcumberland@klnb.com | 703-268-2720

BILLY KELLY

bkelly@klnb.com | 703-268-2706

JEFF TARAE

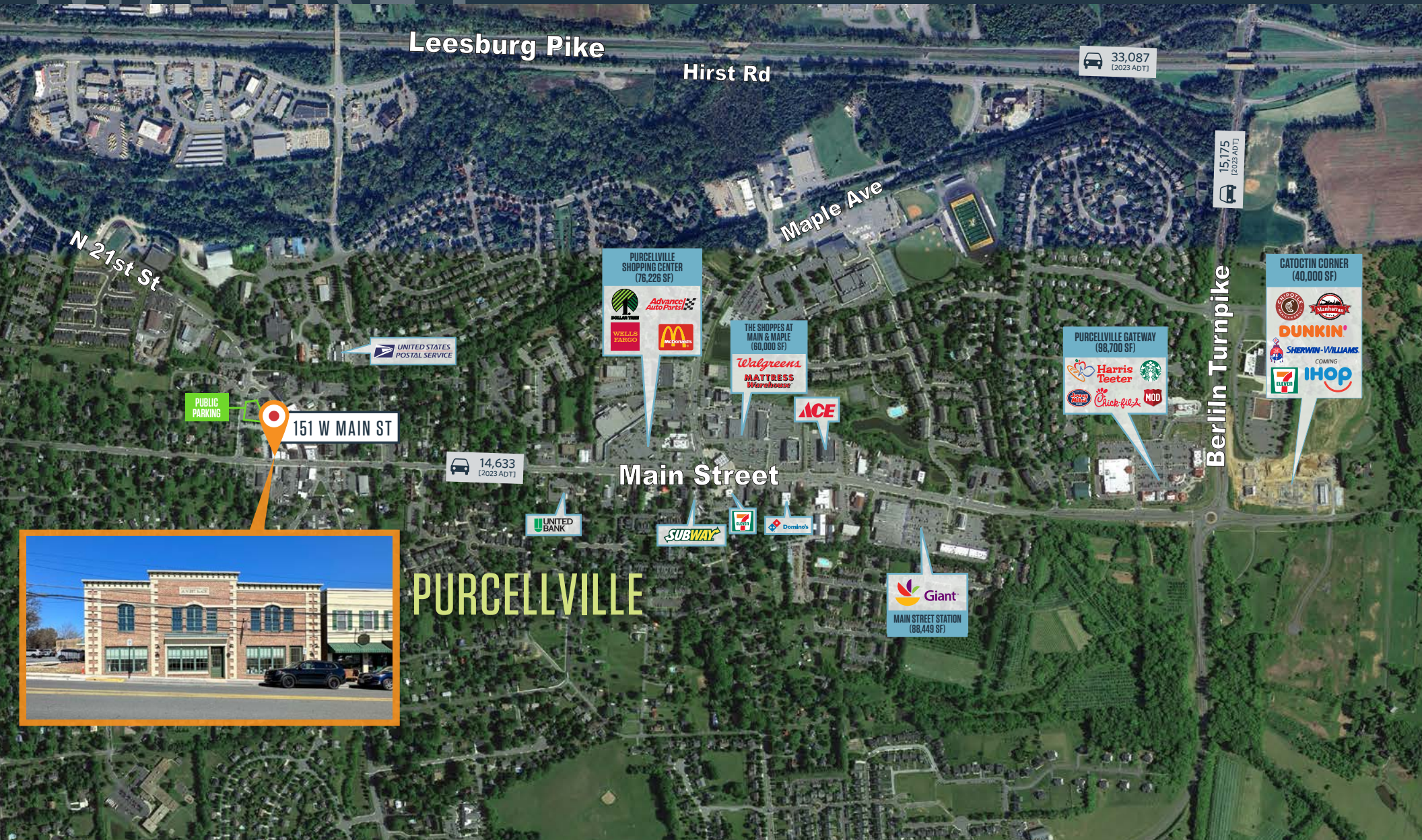
jtarae@klnb.com | 703-268-2741

NAI klnb

MARKET

151 W MAIN STREET

PURCELLVILLE, VA 20132, LOUDOUN COUNTY



TYLER CUMBERLAND

tcumberland@klnb.com | 703-268-2720

BILLY KELLY

bkelly@klnb.com | 703-268-2706

JEFF TARAE

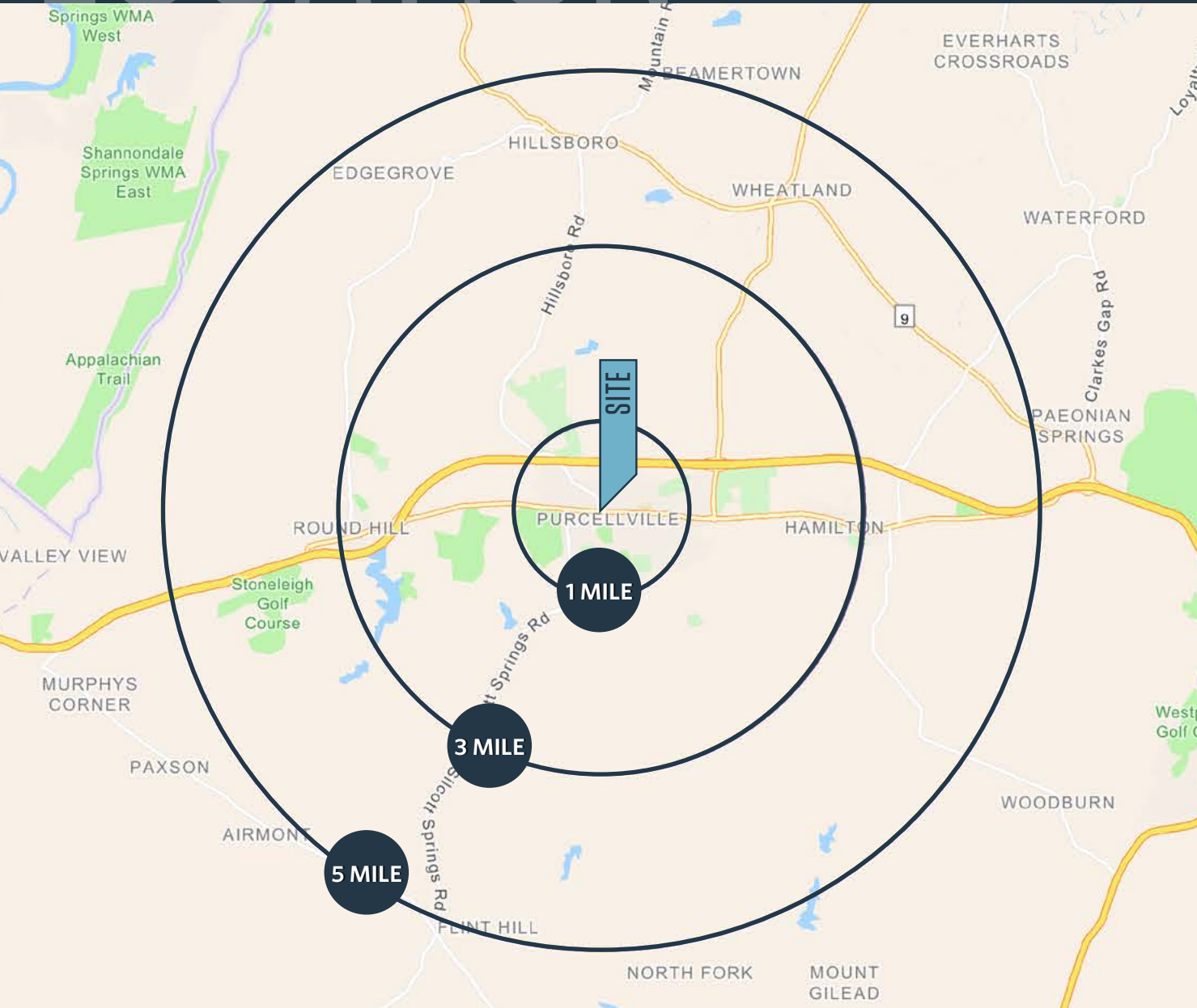
jtarae@klnb.com | 703-268-2741

NAI klnb

LOCATION

151 W MAIN STREET

PURCELLVILLE, VA 20132, LOUDOUN COUNTY



DEMOGRAPHICS | 2024:

1-MILE	3-MILE	5-MILE
Population		
7,672	19,530	29,817
Daytime Population		
6,097	10,479	12,941
Households		
2,512	6,176	9,423
Average HH Income		
\$201,773	\$221,042	\$236,790

[CLICK TO DOWNLOAD DEMOGRAPHIC REPORT](#)

TRAFFIC COUNTS | 2023:

Main Street	14,633 ADT
Harry Byrd Highway	33,087 ADT

TYLER CUMBERLAND

tcumberland@klnb.com | 703-268-2720

BILLY KELLY

bkelly@klnb.com | 703-268-2706

JEFF TARAE

jtarae@klnb.com | 703-268-2741





151 W MAIN STREET

PURCELLVILLE, VA 20132, LOUDOUN COUNTY

FOR MORE INFORMATION, PLEASE CONTACT:

OFFICE

TYLER CUMBERLAND

tcumberland@klnb.com
703-268-2720

JEFF TARAE

jtarae@klnb.com
703-268-2741

RETAIL

BILLY KELLY

bkelly@klnb.com
703-268-2706

8065 Leesburg Pike, Suite 700, Tysons, VA 22182

.....
klnb.com



instagram.com/klnbcre



linkedin.com/company/klnb



facebook.com/KLNBCRE

CLICK TO VIEW PROPERTY WEBSITE

While we have no reason to doubt the accuracy of any of the information supplied, we cannot, and do not, guarantee its accuracy. All information should be independently verified prior to a purchase or lease of the property. We are not responsible for errors, omissions, misuse, or misinterpretation of information contained herein and make no warranty of any kind, express or implied, with respect to the property or any other matters.