

Creekside suite 208

CREATED ON
2024-09-04

Total area 825.43 sq ft	Floors 1	Rooms 5	Conference room 0
-----------------------------------	--------------------	-------------------	-----------------------------

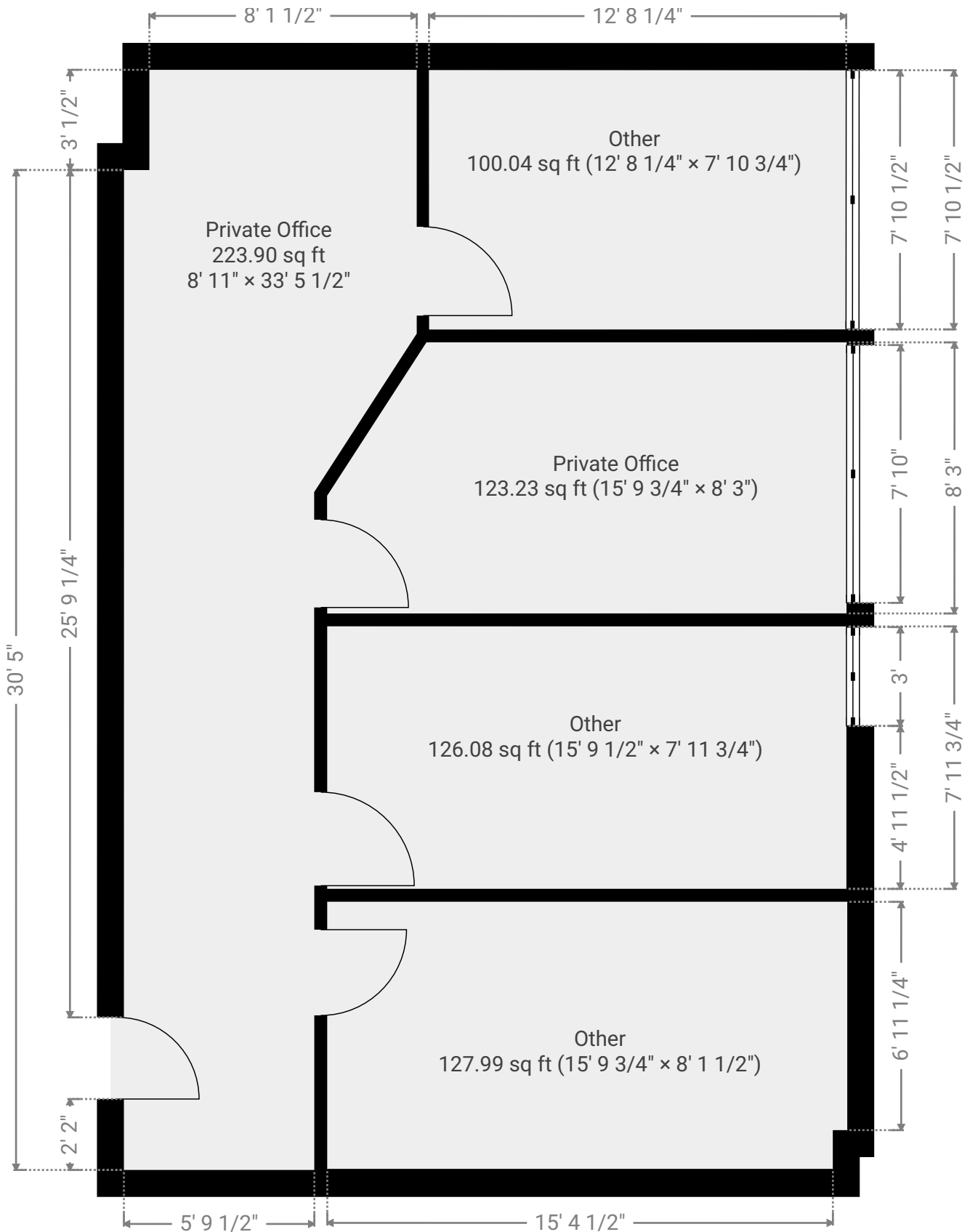
Creekside suite 208

TOTAL AREA: 825.43 sq ft • LIVING AREA: 825.43 sq ft • FLOORS: 1 • ROOMS: 5



▼ 2nd Floor

TOTAL AREA: 825.43 sq ft • LIVING AREA: 825.43 sq ft • ROOMS: 5



1:51

Creekside suite 208

TOTAL AREA: 825.43 sq ft • LIVING AREA: 825.43 sq ft • FLOORS: 1 • ROOMS: 5



▼ 2nd Floor

Photos

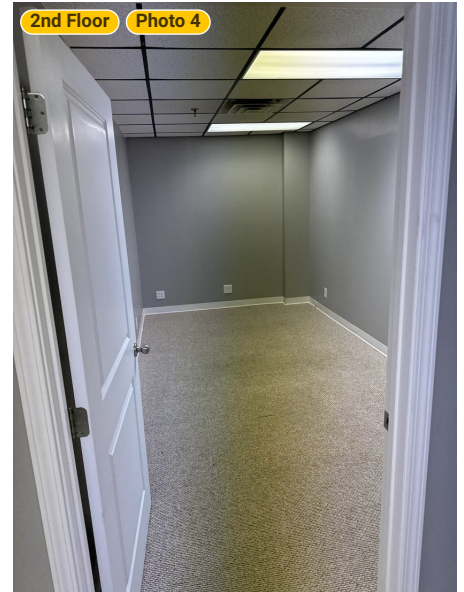
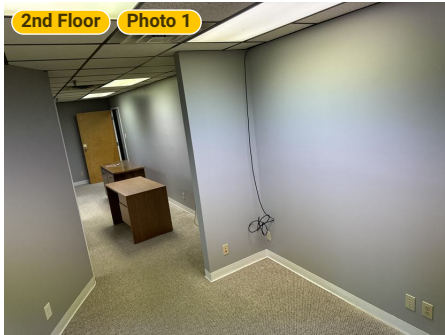
4 Photos (see photos page)

Creekside suite 208

TOTAL AREA: 825.43 sq ft • LIVING AREA: 825.43 sq ft • FLOORS: 1 • ROOMS: 5



▼ Photos/2nd Floor



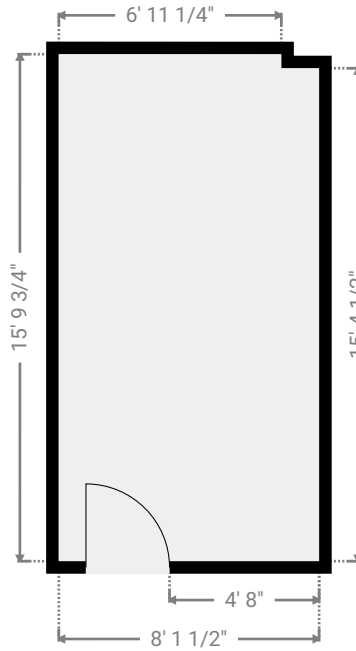
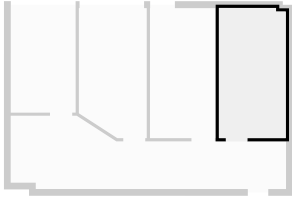
Creekside suite 208

TOTAL AREA: 825.43 sq ft • LIVING AREA: 825.43 sq ft • FLOORS: 1 • ROOMS: 5



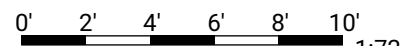
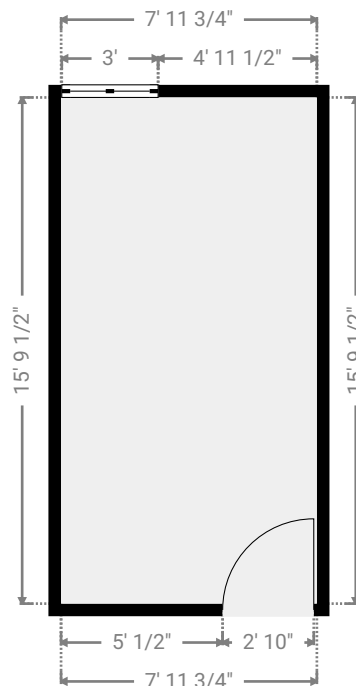
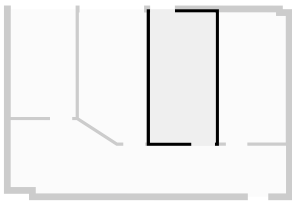
▼ Other 2nd Floor

WIDTH: 8' 1 1/2" • LENGTH: 15' 9 3/4" • CEILING HEIGHT: 7' 10"
AREA: 127.99 sq ft • PERIMETER: 47' 10 3/4"



▼ Other 2nd Floor

WIDTH: 7' 11 3/4" • LENGTH: 15' 9 1/2" • CEILING HEIGHT: 7' 10"
AREA: 126.08 sq ft • PERIMETER: 47' 6 3/4"



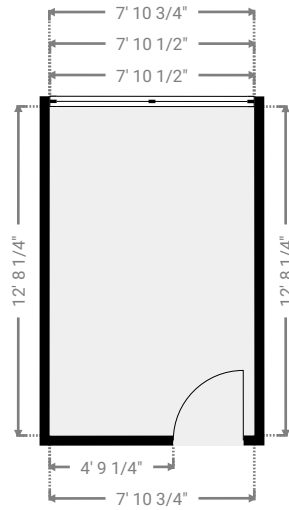
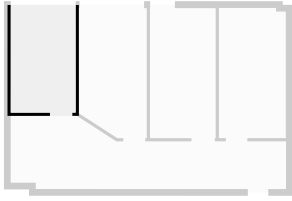
Creekside suite 208

TOTAL AREA: 825.43 sq ft • LIVING AREA: 825.43 sq ft • FLOORS: 1 • ROOMS: 5



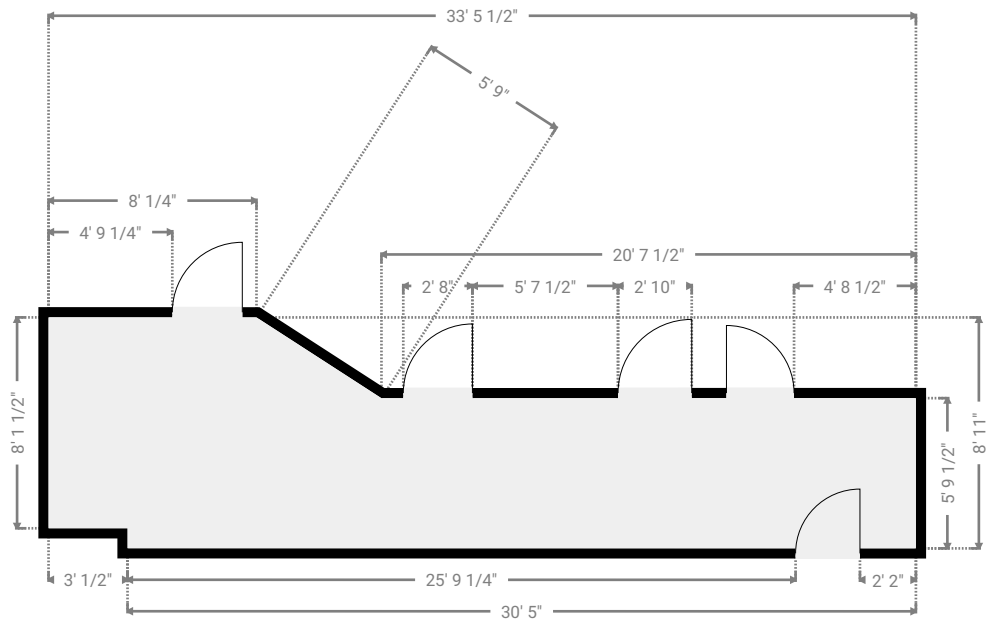
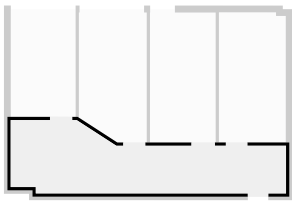
▼ Other 2nd Floor

WIDTH: 7' 10 3/4" • LENGTH: 12' 8 1/4" • CEILING HEIGHT: 7' 10"
AREA: 100.04 sq ft • PERIMETER: 41' 1 3/4"



▼ Private Office 2nd Floor

WIDTH: 33' 5 1/2" • LENGTH: 8' 11" • CEILING HEIGHT: 7' 10"
AREA: 223.90 sq ft • PERIMETER: 82' 6 1/2"



Creekside suite 208

TOTAL AREA: 825.43 sq ft • LIVING AREA: 825.43 sq ft • FLOORS: 1 • ROOMS: 5



▼ Private Office 2nd Floor

WIDTH: 8' 3" • LENGTH: 15' 9 3/4" • CEILING HEIGHT: 7' 10"
AREA: 123.23 sq ft • PERIMETER: 45' 11 1/2"

