



# OFFICE/WAREHOUSE SPACE FOR LEASE

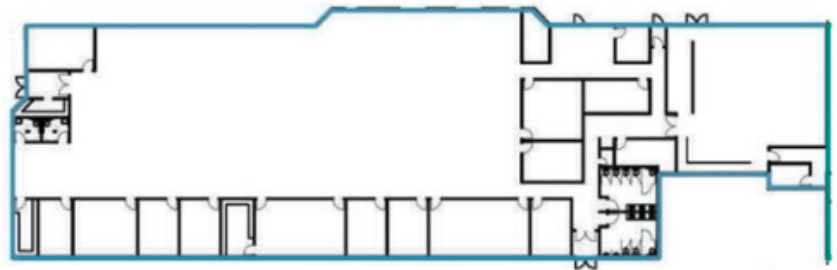
1105 WEST 2400 SOUTH, WEST VALLEY CITY, UT 84119

**LEASE RATE: \$8.00 PSF NNN**



## PROPERTY INFORMATION

- ✓ 17,000 SF Available For Sublease
- ✓ Available July 1, 2026
- ✓ LED - April 2027
- ✓ Ample Parking
- ✓ Large Backup Generator
- ✓ Excellent Freeway Access (S.R 201, I-15, I-215, & I-80)



## CONTACT US

**ADAM HARDING**

✉ [adam@cresutah.com](mailto:adam@cresutah.com)

☎ 801.712.7111

**DEREK KLOPFER**

✉ [derek@cresutah.com](mailto:derek@cresutah.com)

☎ 801.897.9264 [www.cresutah.com](http://www.cresutah.com)

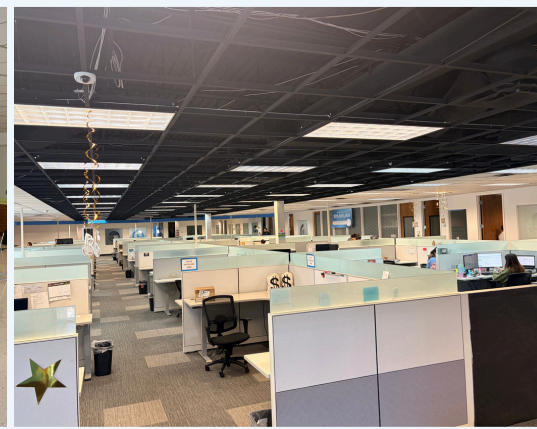
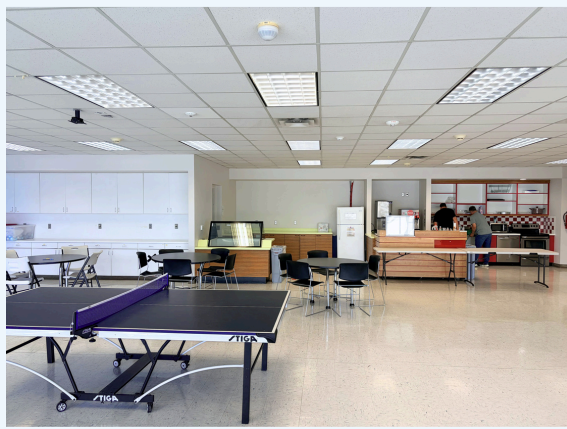
Call Us  
**801.876.6070**





# OFFICE/WAREHOUSE SPACE FOR LEASE

1105 WEST 2400 SOUTH, WEST VALLEY CITY, UT 84119



This information is given with the understanding that all negotiations and/or real estate activity related to the property described above shall be conducted through this CRES office. The above information while not guaranteed, was obtained from sources we believe to be reliable.

## CONTACT US

**ADAM HARDING**

✉ adam@cresutah.com ☎ 801.712.7111

**DEREK KLOPFER**

✉ derek@cresutah.com ☎ 801.897.9264 🌐 www.cresutah.com

Call Us

**801.876.6070** 📞