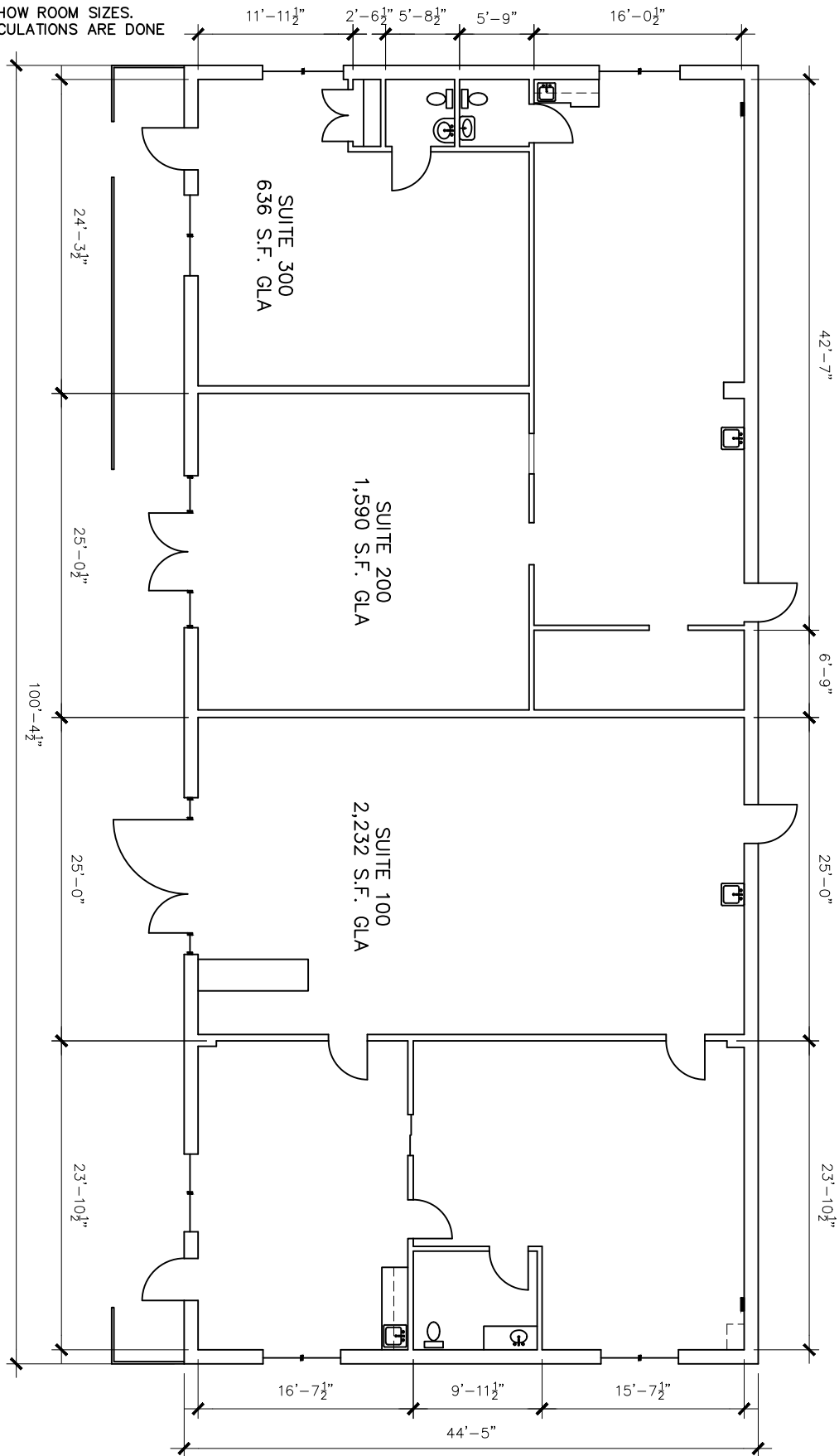


NOTE:

DIMENSIONS ARE TO SHOW ROOM SIZES.
 SQUARE FOOTAGE CALCULATIONS ARE DONE
 TO BOMA STANDARDS.



NOT TO SCALE

Drawing for:
 CSA Realty Group
 9011 Mountain Ridge Dr.
 Ste. 200
 Austin, TX 78759

BUILDING 1
 120 FROG POND LN.
 DRIPPING SPRINGS, TEXAS
 GROSS LEASABLE AREA: 4,458 S.F.

THE MEASUREMENTS, FLOOR PLANS,
 AND CALCULATIONS ARE ACCURATE
 USING BOMA MEASUREMENT
 STANDARDS FOR RETAIL BUILDINGS.
 ANSI/BOMA Z65.5 - 2020
 Project No.: 2488.03
 Date: September 17, 2024
 ©2024

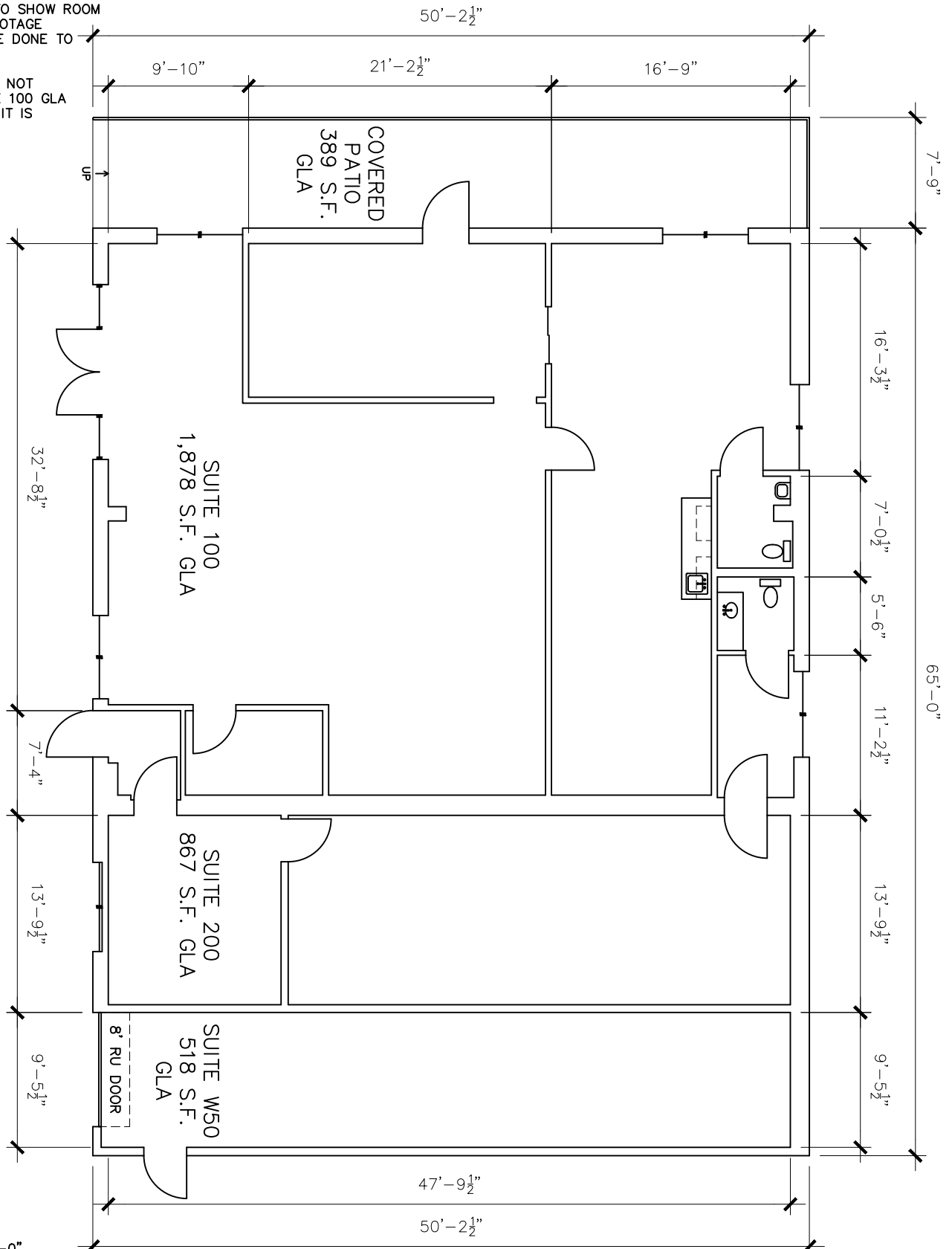
DIMENSIONS
 FLOORPLANS

AUSTIN ★ TEXAS
 DIMENSIONSFLOORPLANS.COM
 PHONE: (512) 342-0114

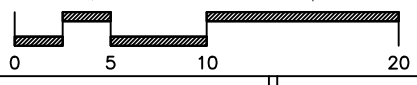
NOTE:

DIMENSIONS ARE TO SHOW ROOM SIZES. SQUARE FOOTAGE CALCULATIONS ARE DONE TO BOMA STANDARDS.

COVERED PATIO IS NOT INCLUDED IN SUITE 100 LISTED ALTHOUGH IT IS LEASABLE AREA.



SCALE: 1/10" = 1'-0"



Drawing for:
 CSA Realty Group
 9011 Mountain Ridge Dr.
 Ste. 200
 Austin, TX 78759

BUILDING 3
 120 FROG POND LN.
 DRIPPING SPRINGS, TEXAS
 GROSS LEASABLE AREA: 3,652 S.F.

THE MEASUREMENTS, FLOOR PLANS,
 AND CALCULATIONS ARE ACCURATE
 USING BOMA MEASUREMENT
 STANDARDS FOR RETAIL BUILDINGS.
 ANSI/BOMA Z65.5 - 2020
 Project No.: 2488.03
 Date: September 17, 2024
 ©2024

DIMENSIONS
 FLOORPLANS
 AUSTIN ★ TEXAS
 DIMENSIONSFLOORPLANS.COM
 PHONE: (512) 342-0114