

SKEES ROAD INDUSTRIAL PARK



6,000 SF OFFICE / WAREHOUSE FOR LEASE 1438 SKEES ROAD WEST PALM BEACH, FL 33411

Zoning:	Industrial
Property Type:	Office /Warehouse
Space Available:	6,000 SF
Min Divisible:	6,000 SF
Lease Rate PSF Annual:	\$18.50
Lease Type:	NNN
Operating Expenses PSF:	\$6.88
Total Monthly Rent:	\$12,680.00
Date Available:	August 1, 2023

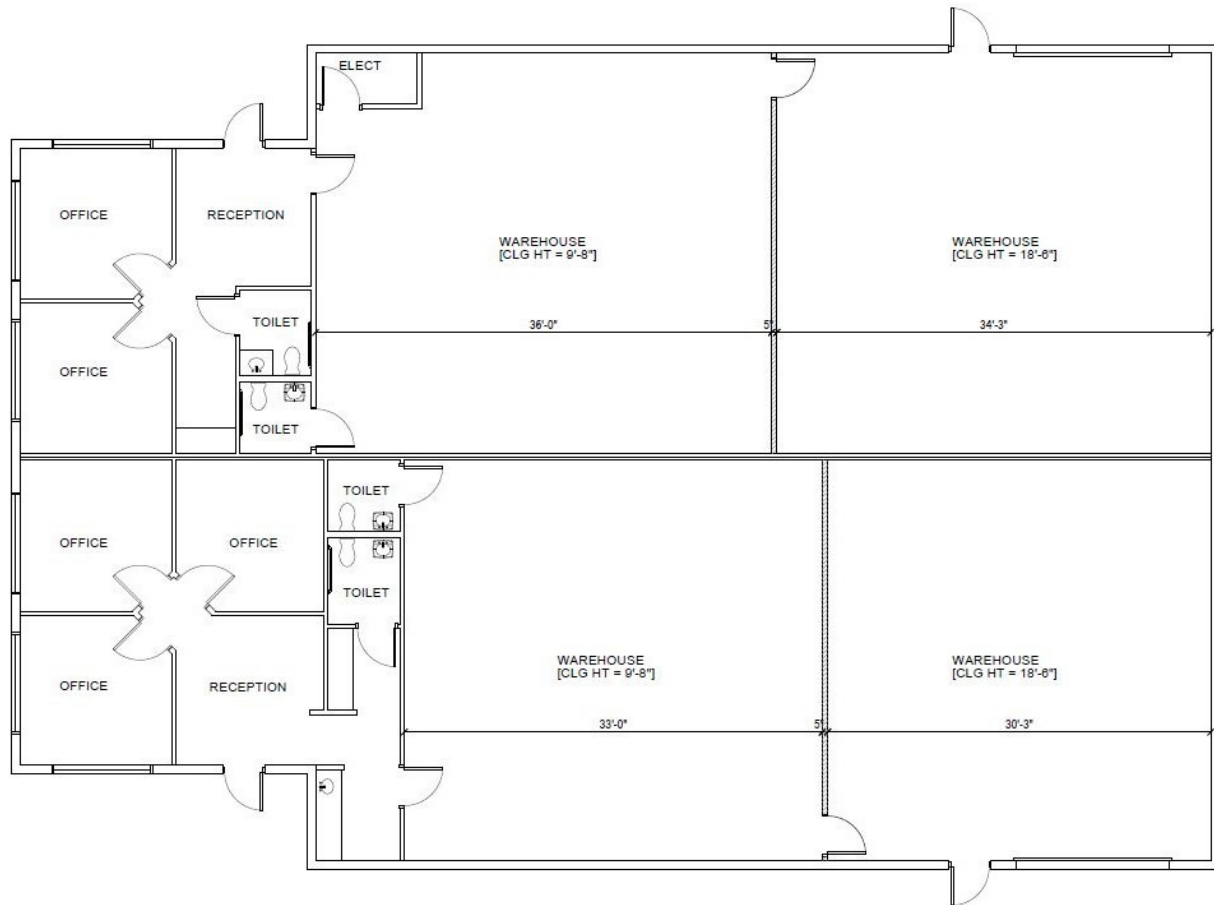
This Freestanding 6,000 SQ FT Flex office/warehouse building consists of a reception area, 6 offices, 4 bathrooms, with large air-conditioned work area and open warehouse space with (2) 14' x 14' Overhead doors. The building also has fenced/gated area for outside parking & Storage.

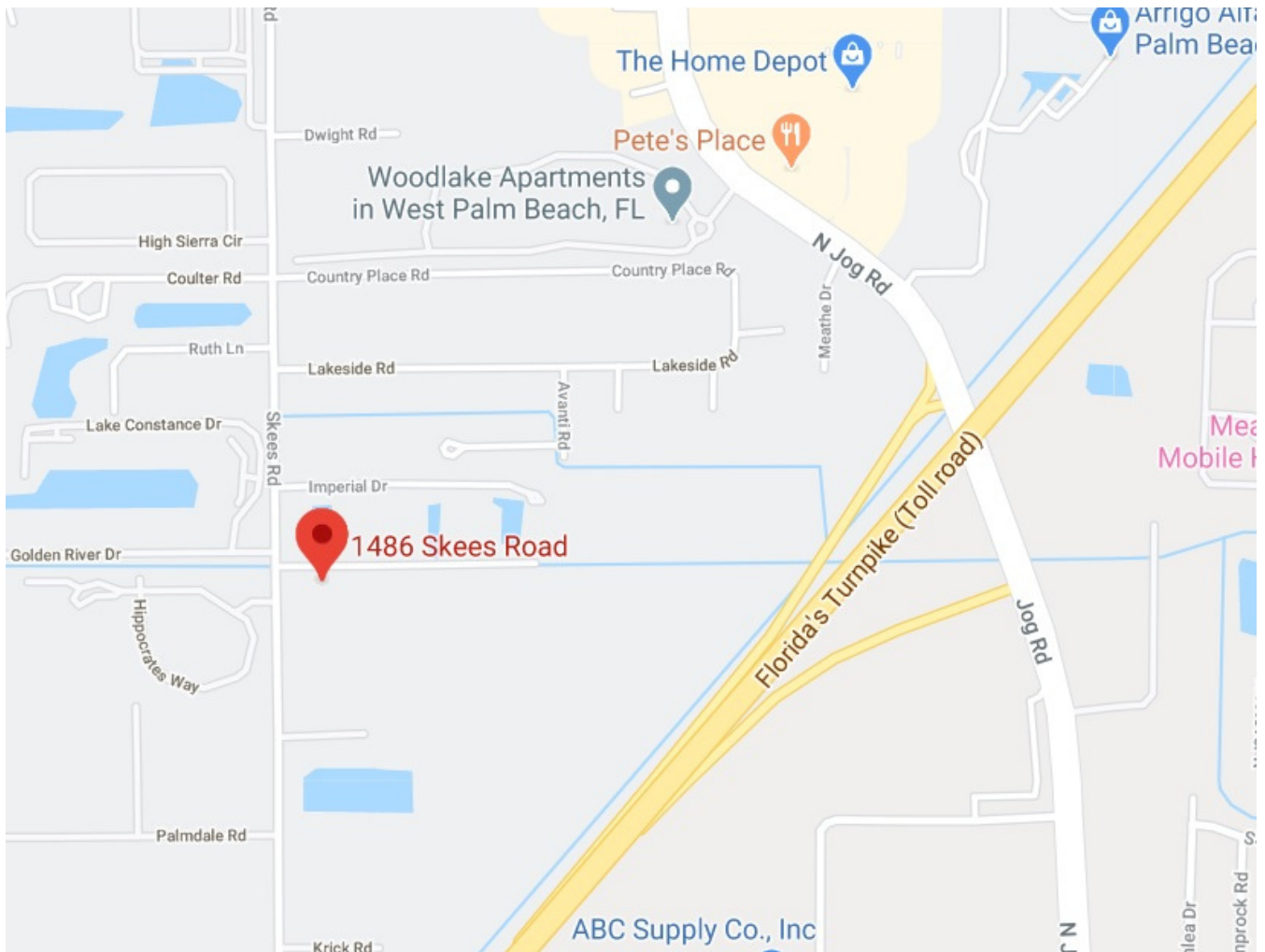
Don't miss your chance to lease this versatile and well-designed office/warehouse space.

**PLEASE DO NOT DISTURB THE CURRENT TENANT
CALL LEASING AGENT FOR INFORMATION**

Great Location! This industrial complex consists of 9 buildings totaling 73,000 sf. The buildings are CBS and metal construction. Each unit has a glass storefront entrance and 14 X 14 foot Grade Level Roll-up Doors. Ceiling heights are 18 to 21 ft Clear. Great Location for a variety of businesses! This complex is located on the east side of Skees Road in between Belvedere Road and Okeechobee Boulevard. Directly across from the Hippocrates Health Institute.

FLOOR PLAN





Cornerstone Realty, Inc
8233 Gator Lane, Suite 18
West Palm Beach, FL 33411
(561)793-9810
www.cri-re.com



Contact: Devin Schmidt
devin@cri-re.com
561-793-9810