

INDU
STRY

FOR LEASE
LAST BAR OR RESTAURANT SPACE AVAILABLE

RETAIL / CREATIVE OFFICE
OPPORTUNITY FOR SHARED OFFICE AVAILABLE
±1,800 RSF

179-181
CULVER BLVD
PLAYA DEL REY

INDUSTRYPARTNERS.COM
310.395.5151
CA BRE No. 01900833

RICHARD ABBITT
ra@industrypartners.com
CA BRE NO. 00826316

RYAN SHULER
rs@industrypartners.com
CA BRE No. 01987799

BEN LARSON
bl@industrypartners.com
CA BRE No. 02138876

AVAILABLE SF

±1,800 RSF

RATE

Inquire for Details

TERM

Flexible

AVAILABILITY

Immediate

USE

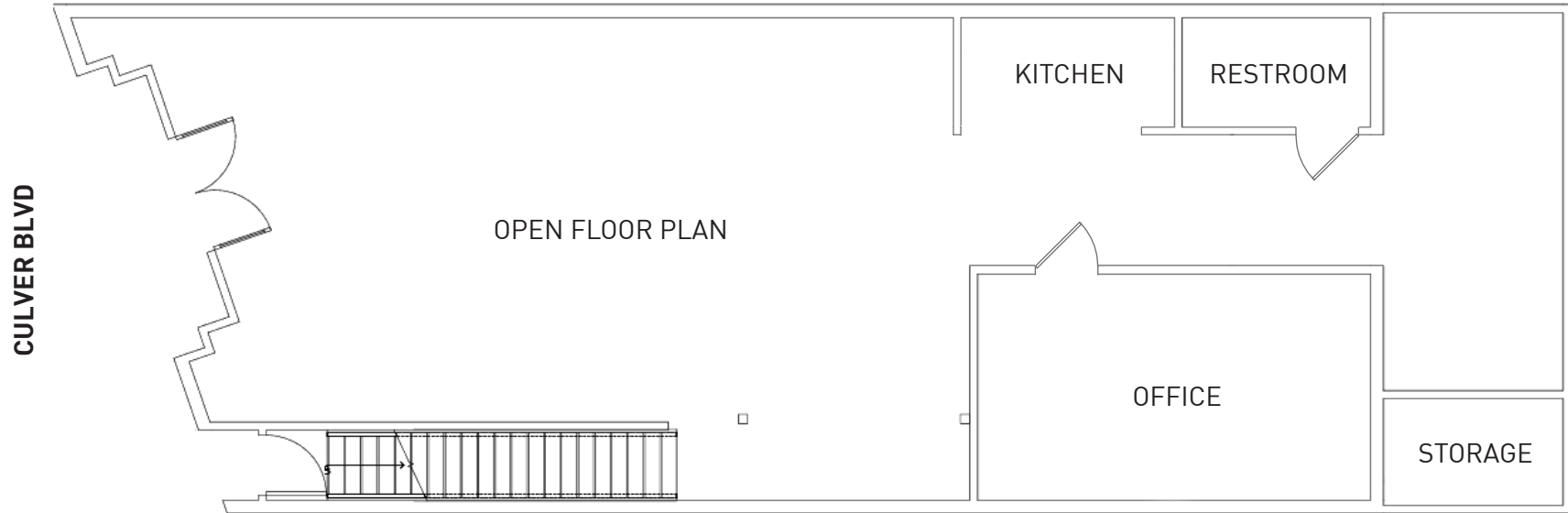
Bar, Restaurant, Commercial
Kitchen, Creative Office
(Tenant to verify)Best-in-class bar or restaurant
space

FEATURES

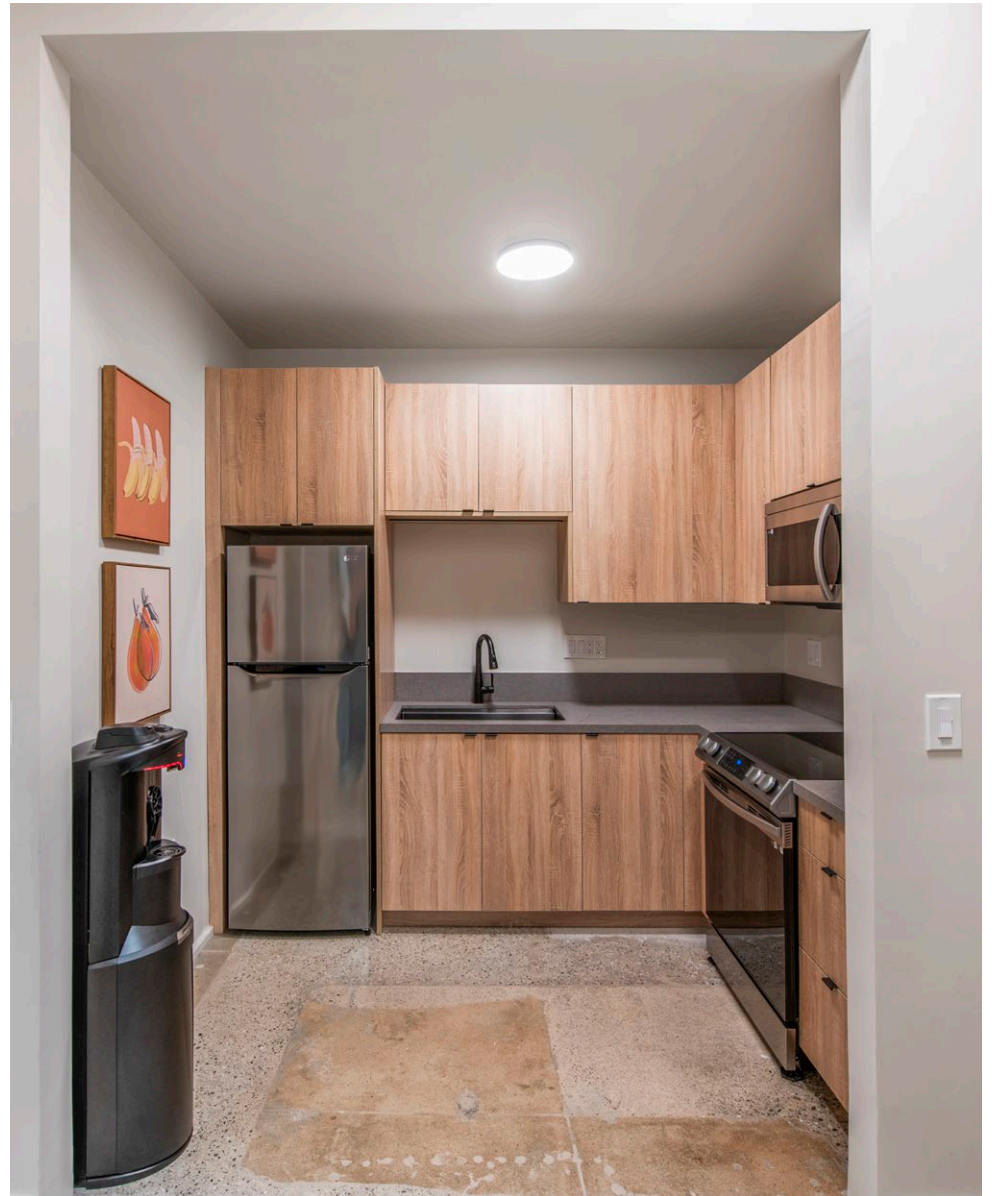
- + Ground floor stand-alone building located in the heart of Playa Del Rey
- + Blocks from the beach (500 feet)
- + Ample parking nearby
- + Classic interior brick facade for a timeless and inviting look
- + Updated bathroom and kitchen
- + Large floor to ceiling storefront
- + Versatile layout for many different types of users
- + Prominent signage for easy visibility
- + Excellent street presence. Tens of thousands cars passing through per day



GROUND FLOOR
±1,800 RSF





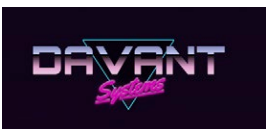


FOR LEASE

RETAIL | CREATIVE OFFICE

179-181 CULVER BLVD PLAYA DEL REY CA 90293

AI GENERATED BAR/
RESTAURANT RENDERINGS



*Ai-Generated Renderings by Davant Systems.

About the neighborhood

Playa Del Rey, nestled along the picturesque coastline of Southern California, exudes a relaxed and coastal charm that captivates residents and visitors alike. This idyllic beachside community, located just south of Marina del Rey, boasts stunning ocean views, pristine sandy shores, and a laid-back atmosphere that fosters a perfect blend of leisure and sophistication. Playa Del Rey's real estate landscape reflects a mix of modern luxury and classic California beachfront living, making it an attractive leasing opportunity. 179 Culver is surrounded by amenities such as Bacari, Playa Provisions, Hank's Pizza and Cantalini's. Situated in this coveted locale, this opportunity offers a unique chance to be part of a thriving community where residents can enjoy the quintessential Southern Californian lifestyle while being in close proximity to Los Angeles' vibrant cultural scene and business hubs.

500 FEET FROM THE BEACH
95/100 WALKSCORE

