

CORNER RETAIL FOR LEASE

234 EGLINTON AVENUE EAST

TORONTO, ON



MOUNT PLEASANT RD. & EGLINTON AVE.

FOR LEASE

AVAILABLE: 854 SF



PROPERTY HIGHLIGHTS

234 Eglinton Ave. E., is a spectacular corner retail space available **For Lease** near the busy intersection of Mount Pleasant Rd. and Eglinton Avenue E. in Midtown Toronto.

This retail space is currently occupied on a month to month basis by a dry cleaner depot.

854 SF, corner retail space available For Lease in high densely populated area with new condo developments, mixed use buildings, office towers, high-rise condo buildings, and apartment complexes.

- Minutes away from Yonge & Eglinton TTC & Subway Station.
- Steps away from Northern Secondary School & North Toronto Collegiate Institute.
- High foot & vehicle traffic in immediate area.
- Bright, wide open, spacious retail space
- Power: 225 Amps, 600 Volts

Available Retail:

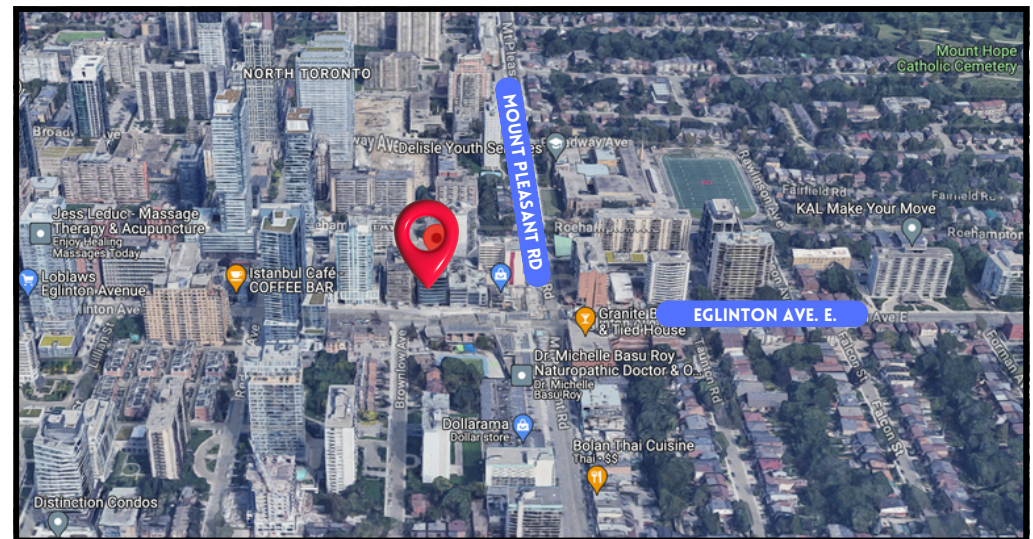
854 SF

Available: Immediate

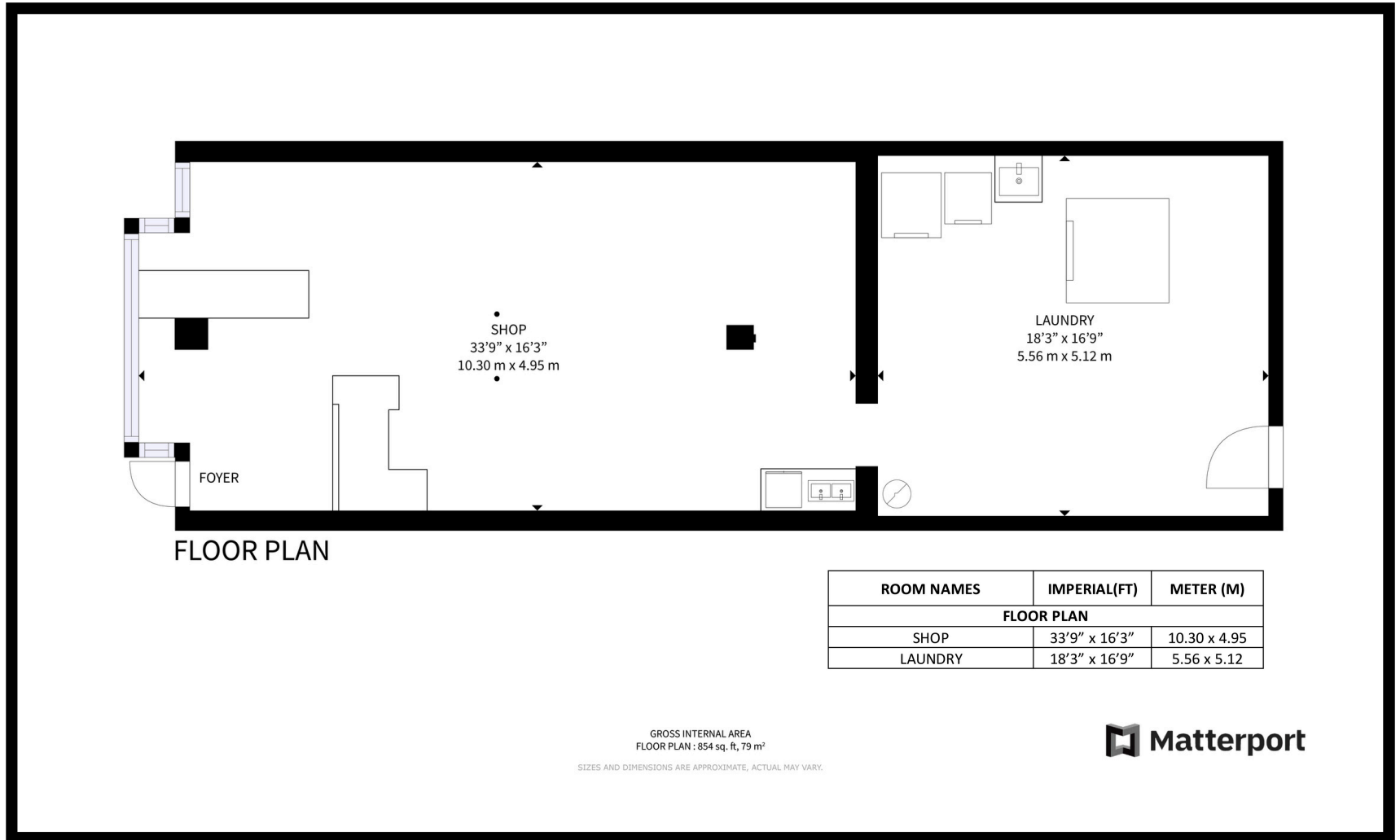
Net Rent: Call agent/broker

T.M.I.: \$14.06 PSF (2024)

Garage Parking: \$180/ Month



FLOOR PLAN



INTERIOR & REAR DOOR PHOTOS



SITE MAP



CONTACT INFORMATION

234 EGLINTON AVENUE EAST
TORONTO, ON



SHAWN ABRAMOVITZ, BA
CEO & BROKER OF RECORD
416.900.3878 EXT:102
SHAWN@PIVOTALCOMMERCIALREALTY.COM

MOUNT PLEASANT RD. & EGLINTON AVE.

FOR LEASE

AVAILABLE: 854 SF

