

ASHTON ESTATES COMMERCIAL

N. MERIDIAN AND E. DEER FLAT - KUNA, ID



PROJECT SUMMARY & AVAILABLE LOTS

Ashton Estates is a 50 acre mixed-use project located in Kuna, ID which consists of a total of 9 commercial lots, 133 residential lots, and a park.

The project is anchored by D&B Supply and the single family home builder is Hayden Homes.

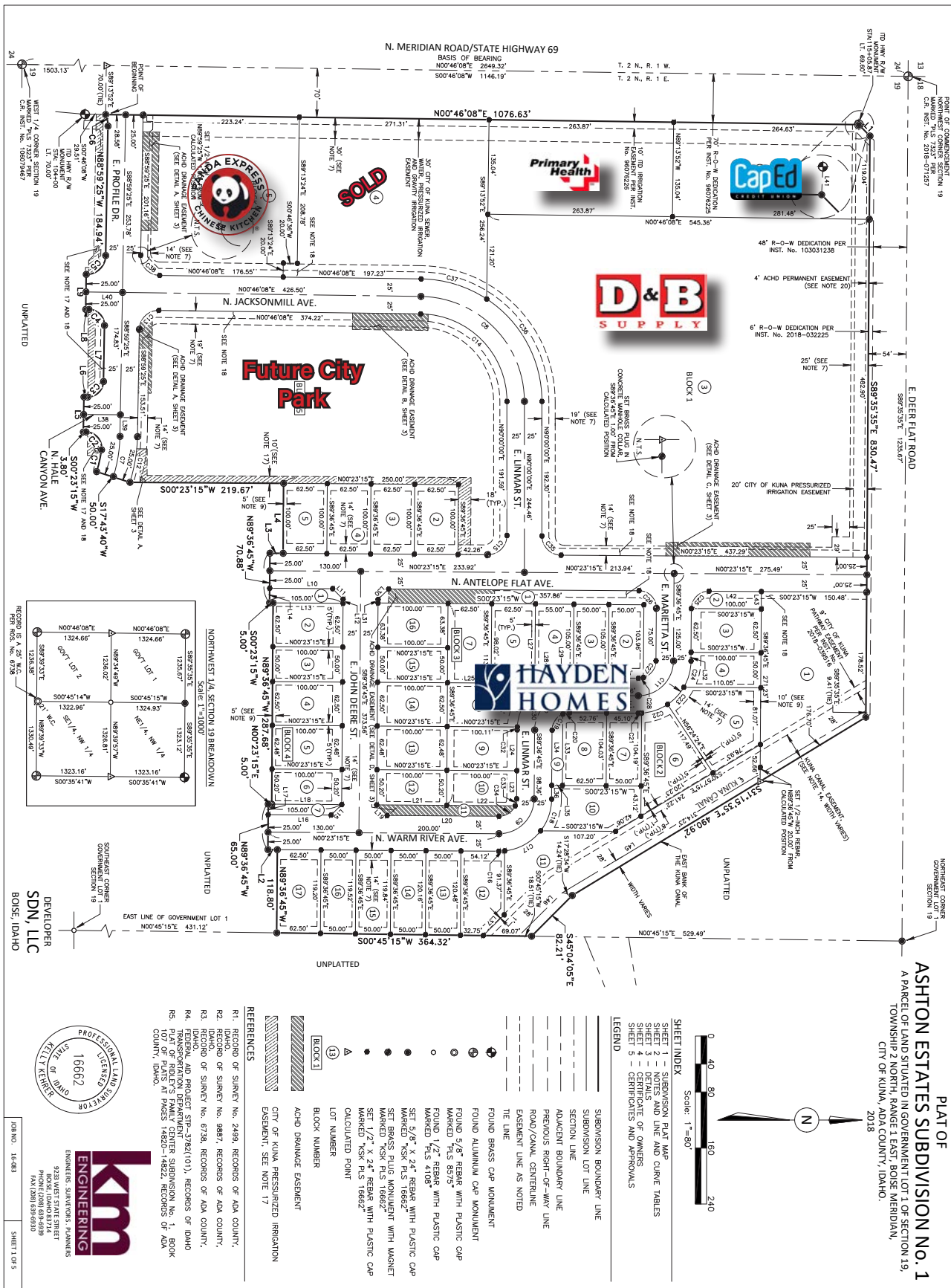
- Phase 1 and 2 complete
- Only 4 lots remaining
- Multiple access points
- High growth area

FOR ADDITIONAL INFORMATION, PLEASE CONTACT:

| | |
|----------------------|-------------------------------|
| Ryan Cantlon | Mark Schlag |
| Office 208-343-9300 | Office 208-947-0817 |
| Cell 208-867-3751 | Cell 208-850-8417 |
| Email ryan@icbre.com | Email marks@tokcommercial.com |

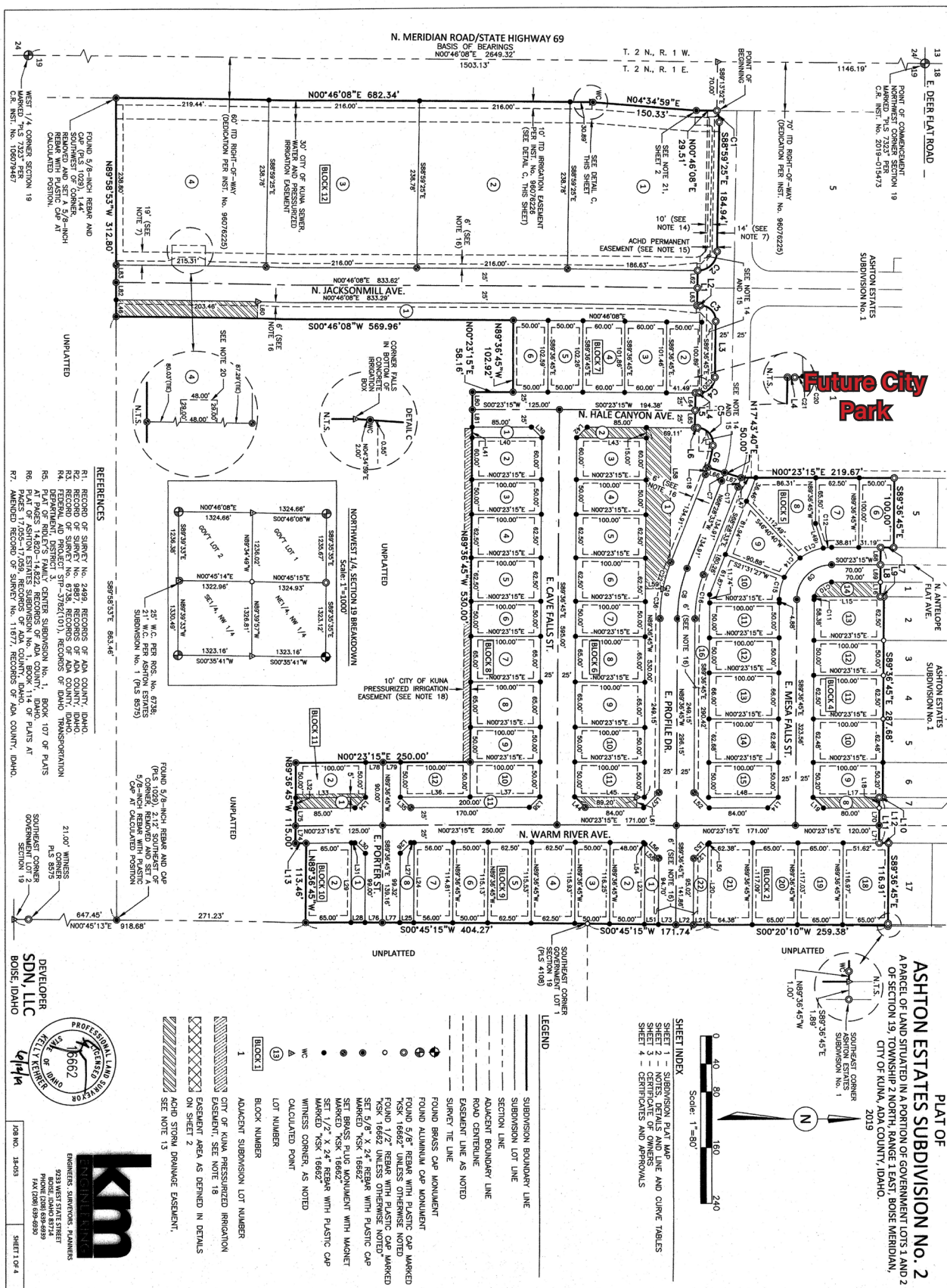
| Lot Key | Description | Zoning | SF/Acres | Price/SF | Asking Price |
|---------|---------------|--------|-------------|------------|--------------|
| 5 | Lot 1, Blk 12 | C-1 | 49,841/1.14 | \$12.00/SF | \$598,092 |
| 6 | Lot 2, Blk 12 | C-1 | 51,576/1.18 | \$11.00/SF | \$567,336 |
| 7 | Lot 3, Blk 12 | C-1 | 51,576/1.18 | \$11.00/SF | \$567,336 |
| 8 | Lot 4, Blk 12 | C-1 | 51,905/1.19 | \$10.00/SF | \$519,050 |

PLAT MAP



All information herein has been obtained from sources deemed reliable but is subject to verification by Buyer. This offering is subject to price change, corrections, errors, omissions, prior sales and/or withdrawal.

PLAT MAP



Book 114 Page 17575

All information herein has been obtained from sources deemed reliable but is subject to verification by Buyer. This offering is subject to price change, corrections, errors, omissions, prior sales and/or withdrawal.

ASHTON ESTATES COMMERCIAL - PHASE 1 AND 2

AERIAL



All information herein has been obtained from sources deemed reliable but is subject to verification by Buyer. This offering is subject to price change, corrections, errors, omissions, prior sales and/or withdrawal.

Ryan Cantlon|208-867-3751|ryan@icbre.com

Mark Schlag|208-947-0817|marks@tokcommercial.com