

# RETAIL UNITS FOR LEASE



## PROPERTY HIGHLIGHTS

- 12,215 SF (building)
- 27,673 SF | 0.64 AC (land)
- Parking: 25 Spaces
- Zoning: LA-C2
- Three (3) Available Units
- Tenant Improvements Avail
- Excellent Traffic Counts
- Clean Common Areas

ASKING

**\$2.80** (\$/psf)

900-910 W. Lomita Blvd, Harbor City, CA 90710

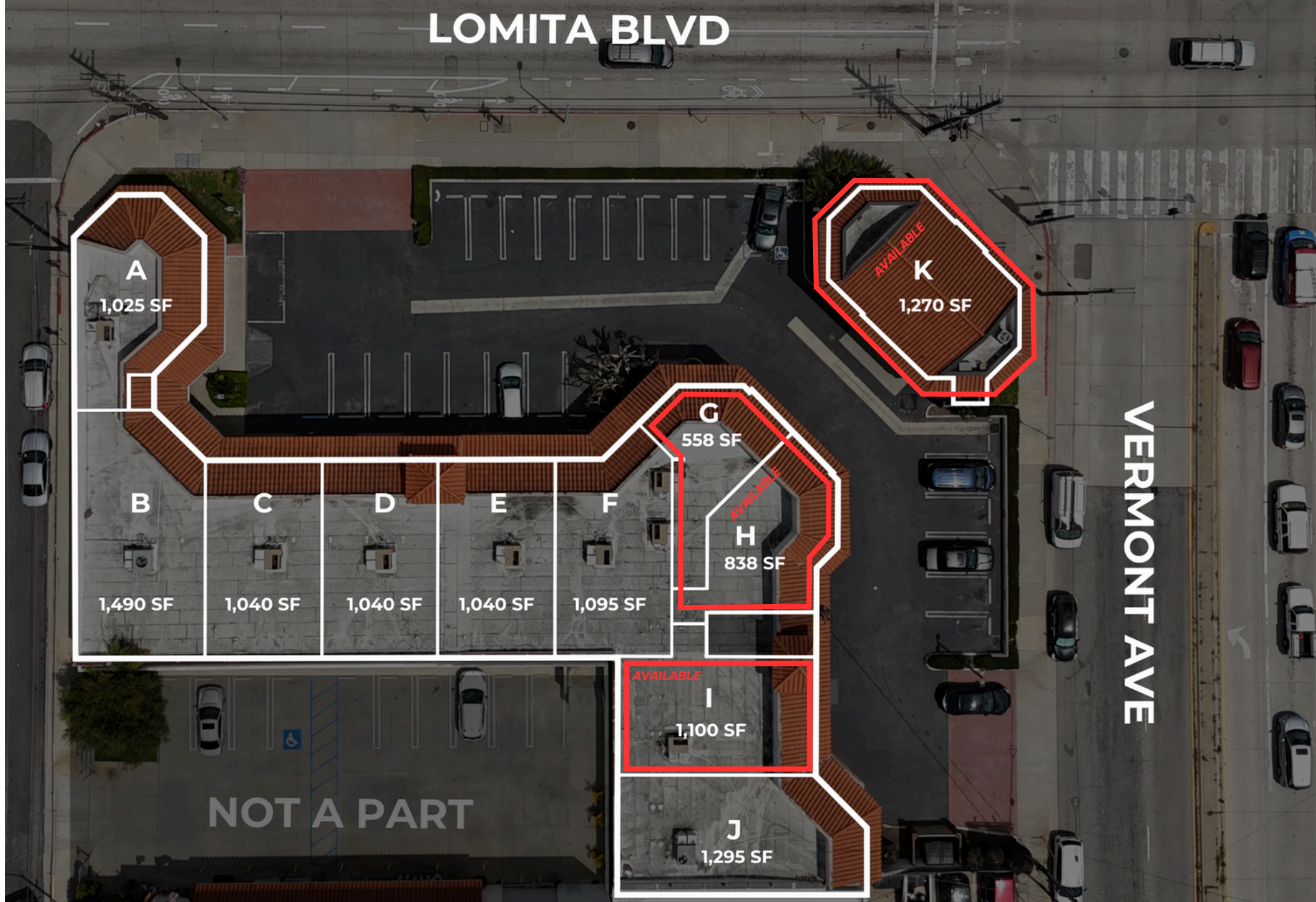


For more information or to schedule a tour, please contact:

**DAN ANDREWS**  
**818.722.1270**



# SITE PLAN

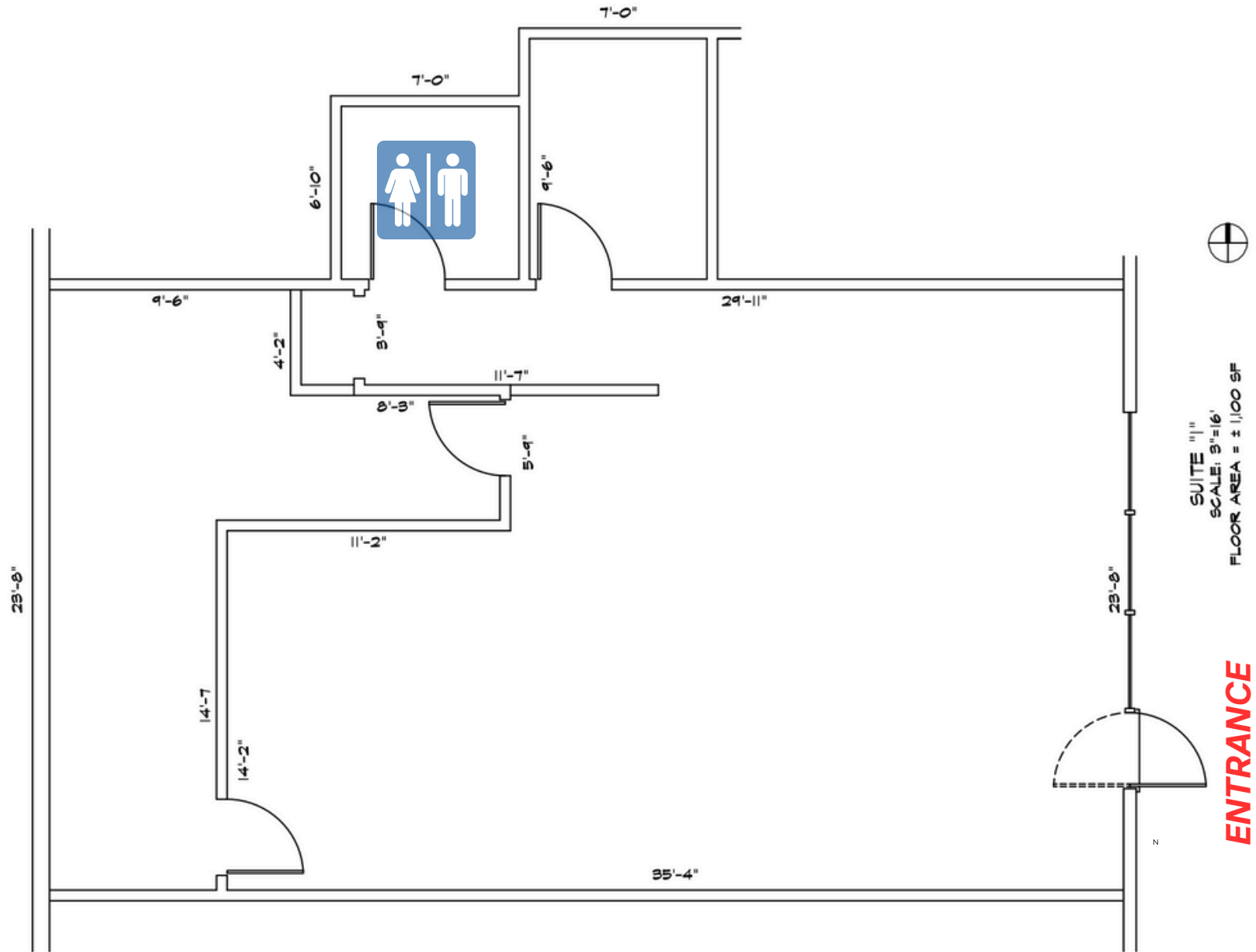




# SUITE I PHOTOS

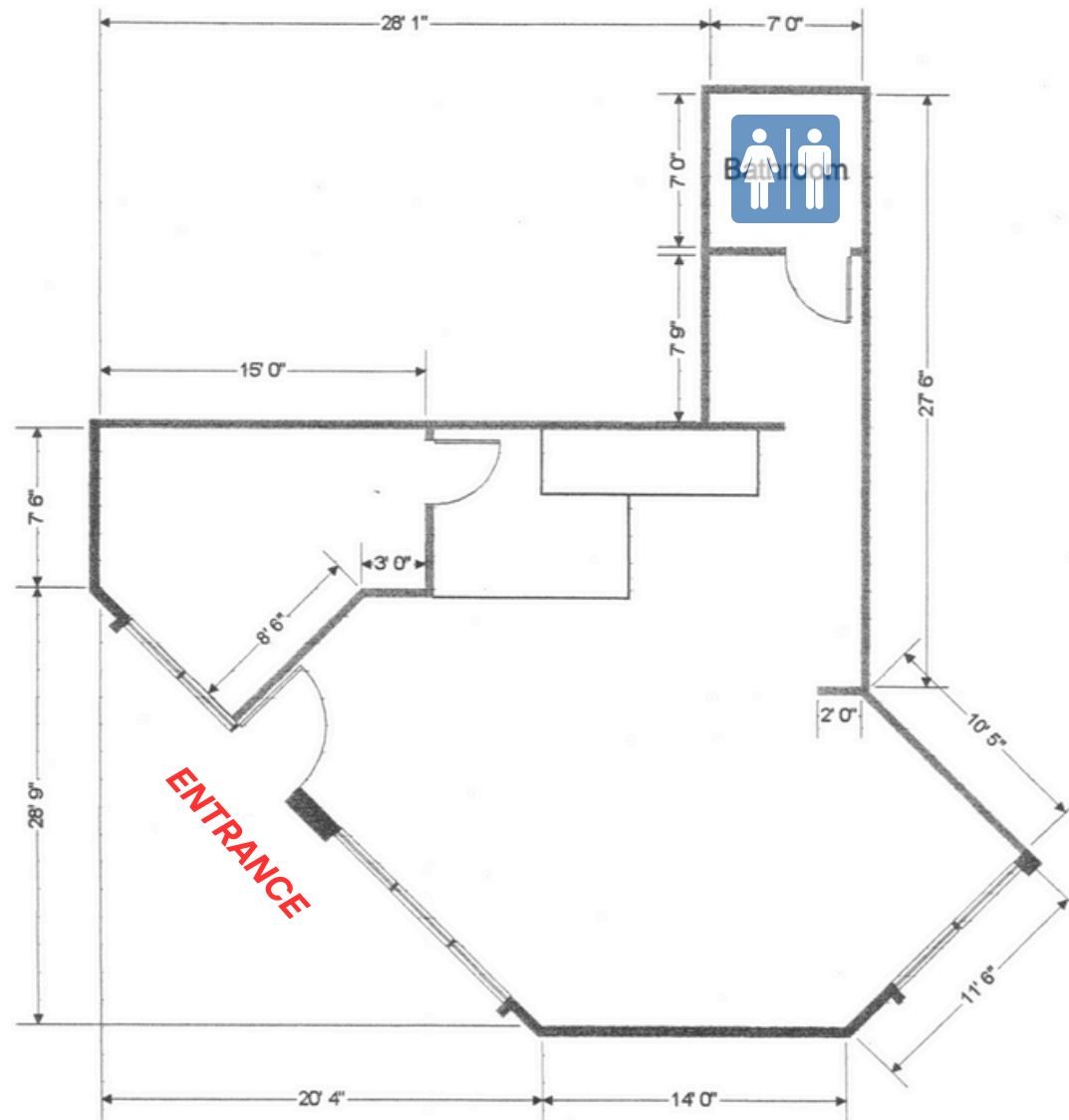


# SUITE I - FLOOR PLAN



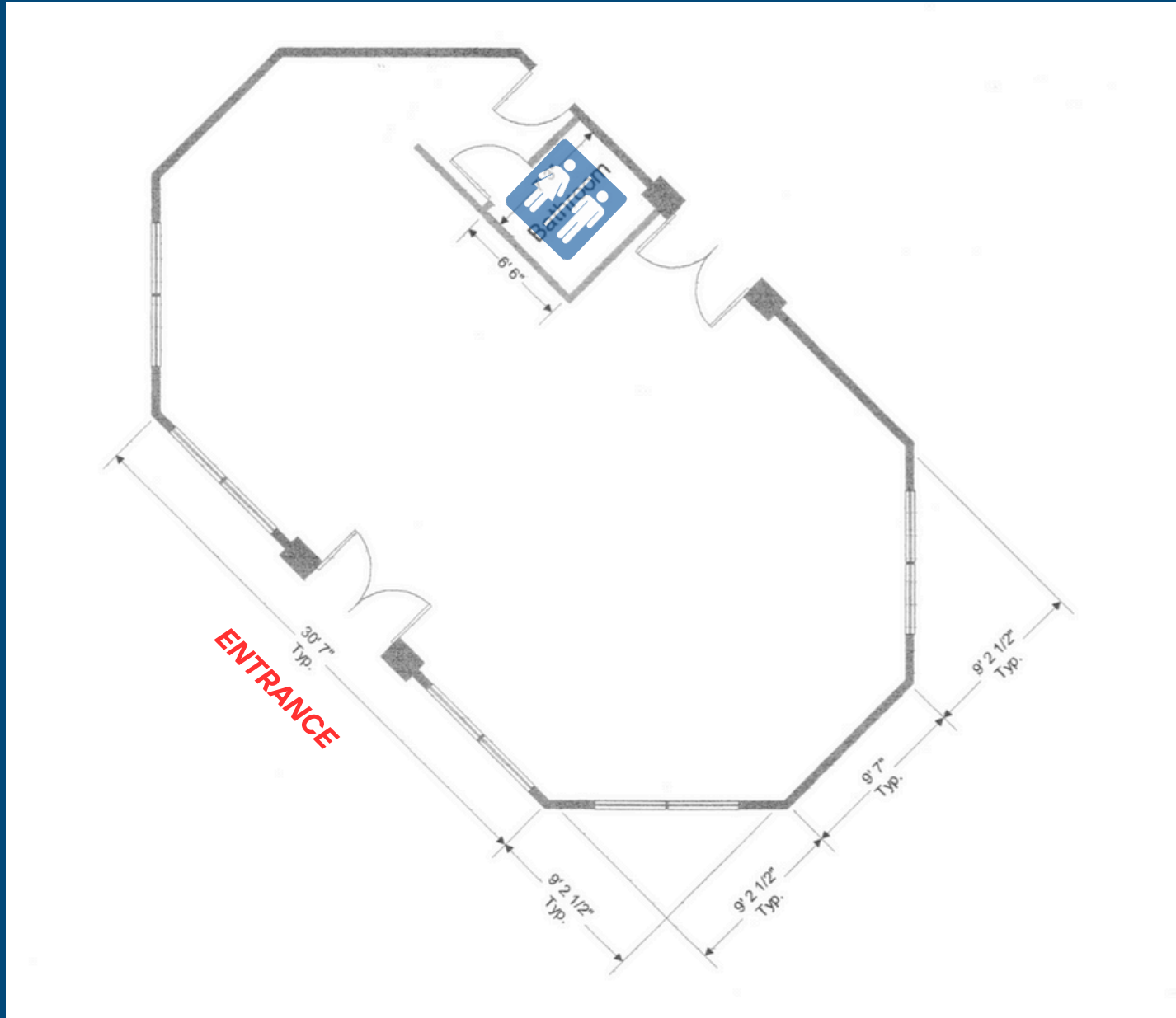


# SUITE G - FLOOR PLAN





# SUITE K - FLOOR PLAN





# AERIAL PHOTOS



155 CONDOS PLANNED  
150,000 SF DEVELOPMENT



SUBJECT PROPERTY



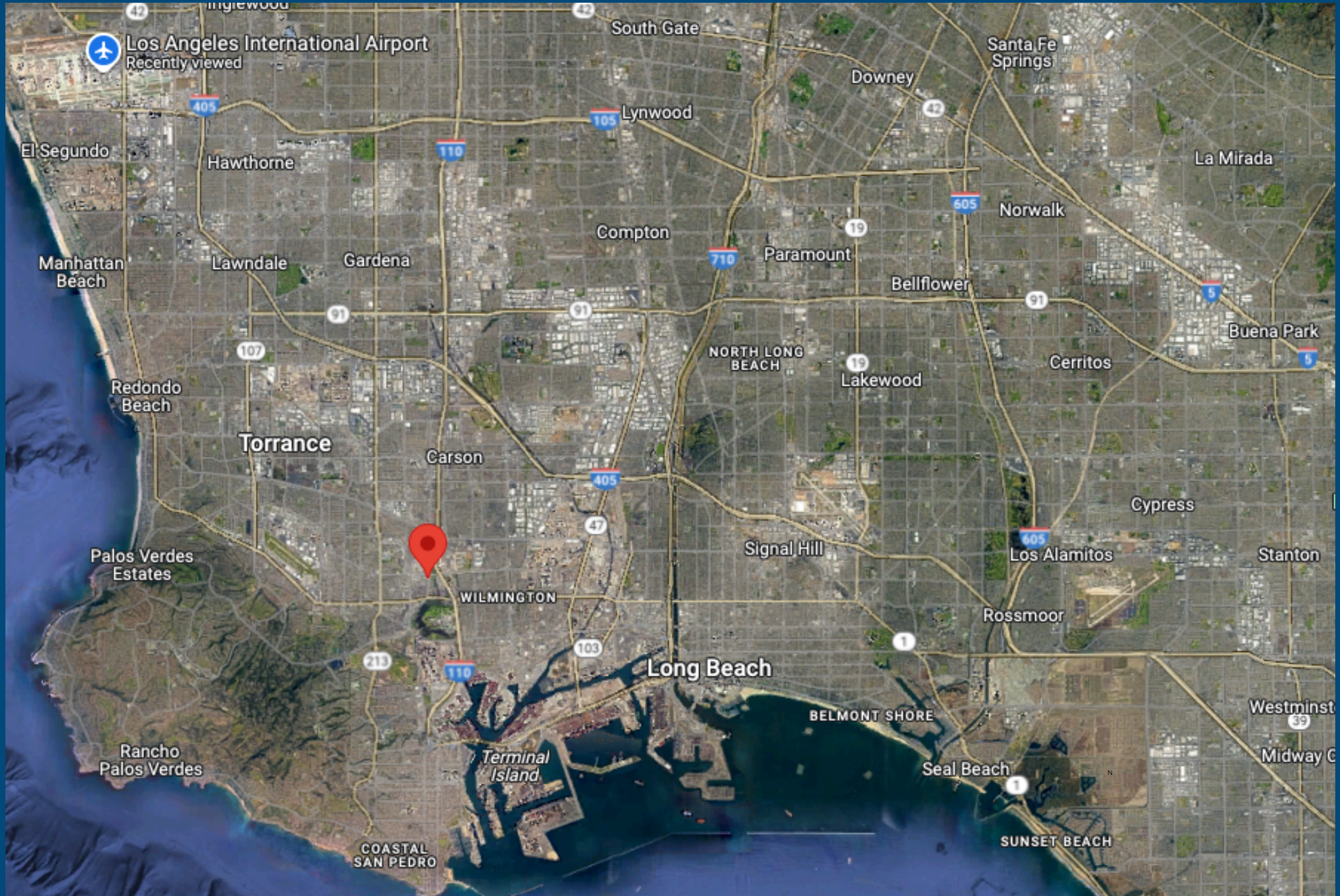


# AERIAL PHOTOS





# MAP LOCATION







THE ANDREWS GROUP  
COMMERCIAL REAL ESTATE

PINNACLE  
ESTATE PROPERTIES, INC.



**OFFERED EXCLUSIVELY BY**

**DAN ANDREWS**

818.722.1270

[Dan@TheAndrewsGrp.com](mailto:Dan@TheAndrewsGrp.com)

CA DRE 02018695

**PETER ANDREWS**

818.722.1270

[Peter@TheAndrewsGrp.com](mailto:Peter@TheAndrewsGrp.com)

CA DRE 01897467

The Andrews Group operates as a division of Pinnacle Estate Properties, our responsible broker, which is licensed by the California Department of Real Estate under license number CA DRE 00905345. This affiliation ensures that all our real estate services, including property evaluation, marketing, negotiation, and transaction facilitation, comply with the highest standards and regulatory guidelines of the California Department of Real Estate.

The information contained herein has been obtained from sources deemed reliable. While every reasonable effort has been made to ensure its accuracy, we cannot guarantee it. No responsibility is assumed for any inaccuracies. Readers are encouraged to consult their professional advisors prior to acting on any of the material contained in this report. © 2024. All rights reserved.