



Former QSR Available for Lease

15655 NW US Hwy 441, Alachua, FL 32615

Property Highlights

- 1,880± SF building with a drive-thru on 1.15± AC
- Building was built in 2021
- The Tara Forest communities, located directly behind the property, are under construction and will total 1,084 units
- Subject property is situated in front of Lowe's, which generates more than half a million visitors annually
- 18 parking spots
- Traffic count on US Hwy 441: 25,000± AADT
- ***Please do not disturb current tenants***

Lease rate: \$156,000/year NNN

Jason Ryals
Executive Vice President
+1 904 861 1136
jason.ryals@colliers.com

Gina Kline
Senior Associate
+1 904 861 1104
gina.kline@colliers.com

Mike Phillips
Associate Vice President
+1 904 861 1113
mike.phillips@colliers.com

[View Online](#)

76 S. Laura St., Ste. 1500
Jacksonville, FL 32202
P: +1 904 358 1206
colliers.com/jacksonville
colliers.com/en/p-USA1166461

Site Aerial

LOWE'S

Canvas Church

Cilantro TACOS



NW 157th Ln

NW 147th Dr

Site



Mi APAs

CAMPUS USA credit union

Advance Auto Parts

DOLLAR TREE

AutoZone

441

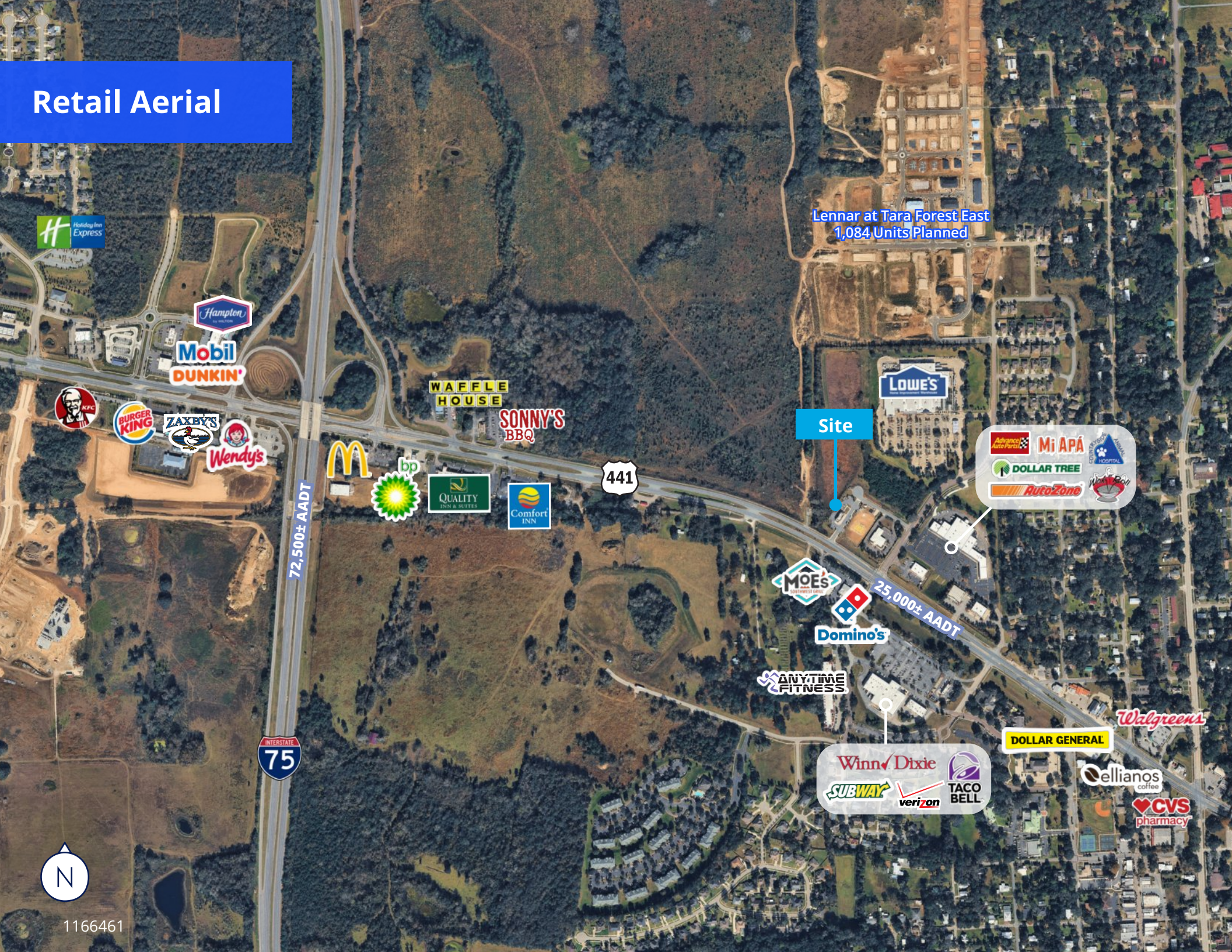


MOE's SOUTHWEST GRILL

Domino's



Retail Aerial



Lennar at Tara Forest East
1,084 Units Planned

Site

441

72,500± AADT

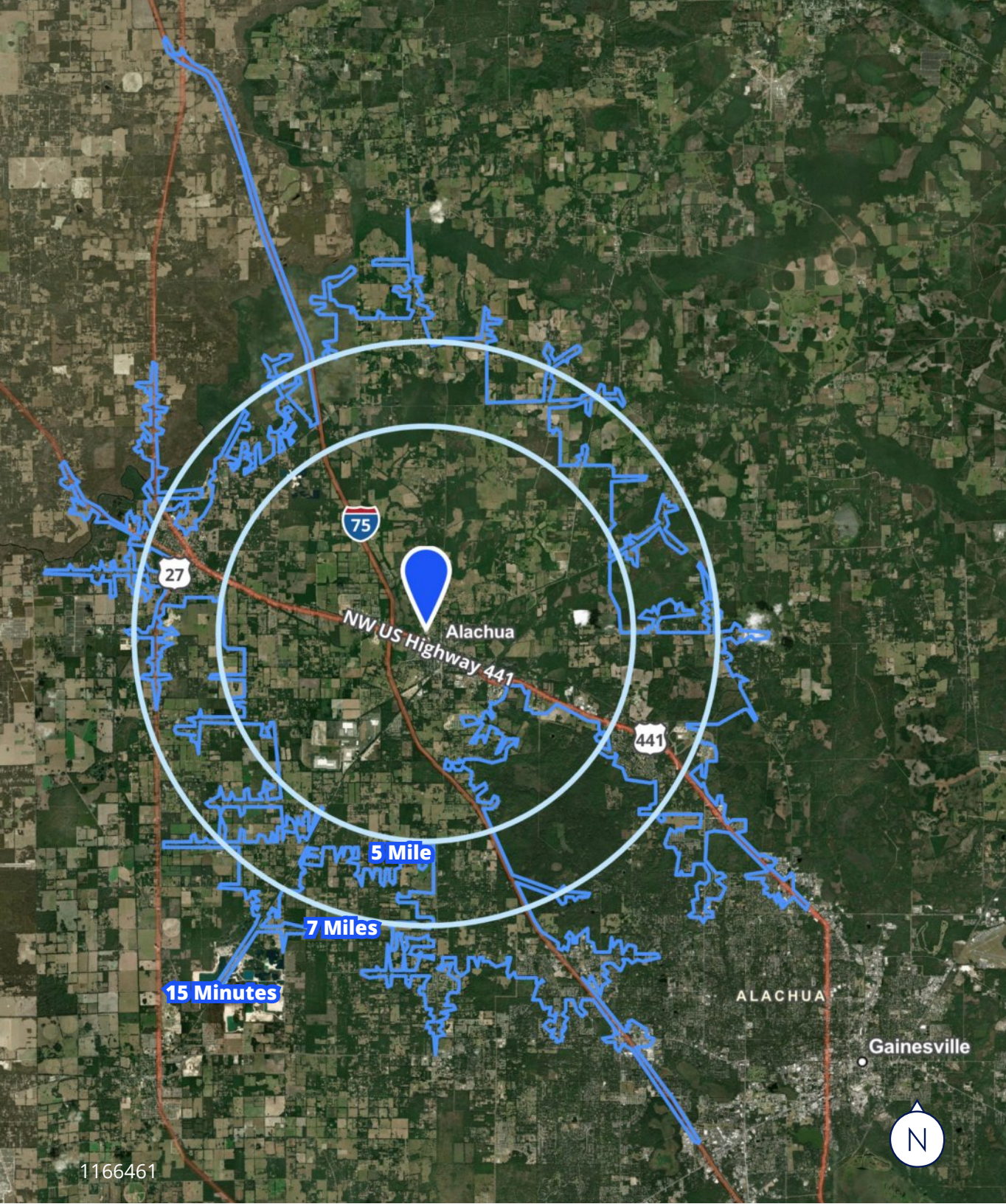
25,000± AADT

INTERSTATE
75

N

1166461





Demographics

Source: ESRI Business Analyst, 2025



Population

5 Miles | 12,829
 7 Miles | 24,693
 15 Min | 37,849



Total Households

5 Miles | 5,068
 7 Miles | 9,897
 15 Min | 15,060



Average HH Income

5 Miles | \$102,269
 7 Miles | \$113,357
 15 Min | \$113,388



Market Overview

15655 NW US Highway 441, Alachua, Florida, 32615
7 mile radius

Household & population characteristics



\$87,247

Median household income



\$370,877

Median home value



82.4%

Owner occupied housing units



42.6

Median age



51.4%

Female population



58.8%

% Married (age 15 or older)

Annual lifestyle spending



\$3,533

Travel



\$34

Tickets to Movies



\$106

Theatre/Operas/Concerts



\$96

Admission to Sports Events



\$9

Online Gaming Services

1166461

Households & population



24,693

Current total population



26,453

5 Year total population



9,897

Current total households



10,685

5 year total households

Education

5%

No high school diploma



26%

High school graduate



28%

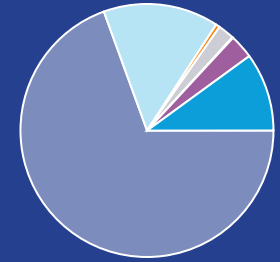
Some college



41%

Bachelor's/graduate/prof degree

Race



- White population
- Black population
- American Indian population
- Asian population
- Pacific islander population
- Other race population
- Population of two or more races

Business



1,011

Total businesses



9,359

Total employees

Employment



71%

White collar



16%

Blue collar



13%

Services

4.2%

Unemployment rate

Annual household spending



\$2,346

Apparel & Services



\$216

Computers & Hardware



\$3,941

Eating Out



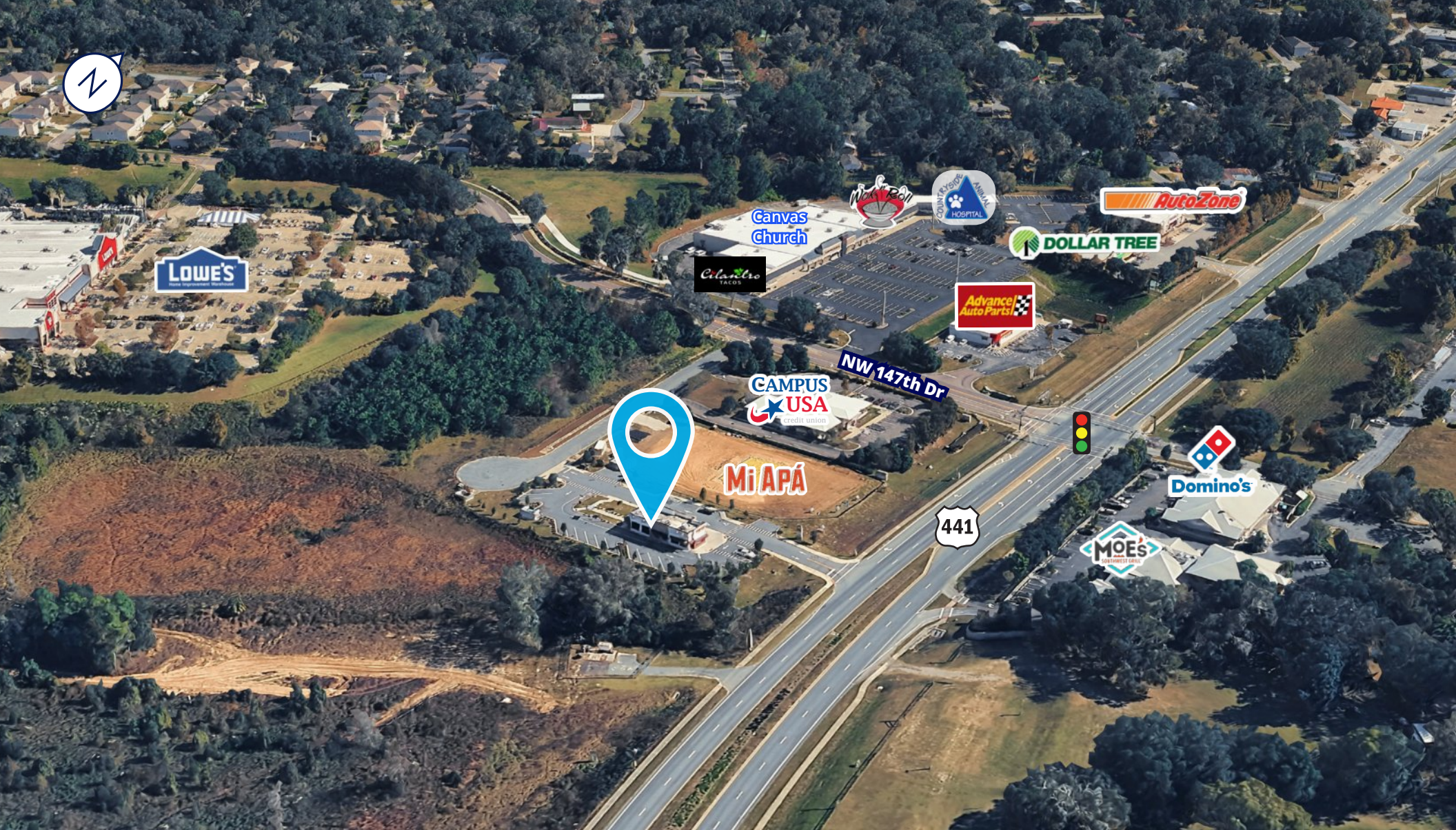
\$7,290

Groceries



\$7,968

Health Care



Colliers
 76 S. Laura St., Ste. 1500
 Jacksonville, FL 32202
 P: +1 904 358 1206
colliers.com/en/p-USA1166461

Jason Ryals
 Executive Vice President
 +1 904 861 1136
jason.ryals@colliers.com

Gina Kline
 Senior Associate
 +1 904 861 1104
gina.kline@colliers.com

Mike Phillips
 Associate Vice President
 +1 904 861 1113
mike.phillips@colliers.com

Disclaimer: This document/email has been prepared by Colliers for advertising and general information only. Colliers makes no guarantees, representations or warranties of any kind, expressed or implied, regarding the information including, but not limited to, warranties of content, accuracy and reliability. Any interested party should undertake their own inquiries as to the accuracy of the information. Colliers excludes unequivocally all inferred or implied terms, conditions and warranties arising out of this document and excludes all liability for loss and damages arising there from. This publication is the copyrighted property of Colliers and /or its licensor(s). ©2026. All rights reserved. This communication is not intended to cause or induce breach of an existing listing agreement. Colliers International Florida, LLC