



# RESIDENTIAL LAND FOR SALE



±20 AC Luna Road  
Phelan, CA



### Site Attributes

- APN 3097-381-01
- ±20 Acres (±871,200 sf)
- Zoned RL - Rural Living; allows for approximately one dwelling unit per 2.5 gross acres and incidental livestock and agricultural applications; buyer to verify
- Located at the SW corner of Luna Road and Trinidad Road
- Approximately ±1 mile south of Palmdale Road/Highway 18
- Asking \$80,000.00

# AREA OVERVIEW

Luna Road | Phelan, CA



VICTORIA MAGATHAN  
ELEMENTARY SCHOOL

DONALD F BRADACH  
ELEMENTARY SCHOOL

DESERT TRAILS  
PREPARATORY  
ACADEMY

COLUMBIA  
MIDDLE SCHOOL

ADELANTO  
HIGH SCHOOL

THEODORE VICK  
SCHOOL

A collage of logos for various retail and service brands, including Walmart, Stater Bros. Markets, McDonald's, Subway, CVS, US Bank, and many others.

**SITE**  
±20 Acres

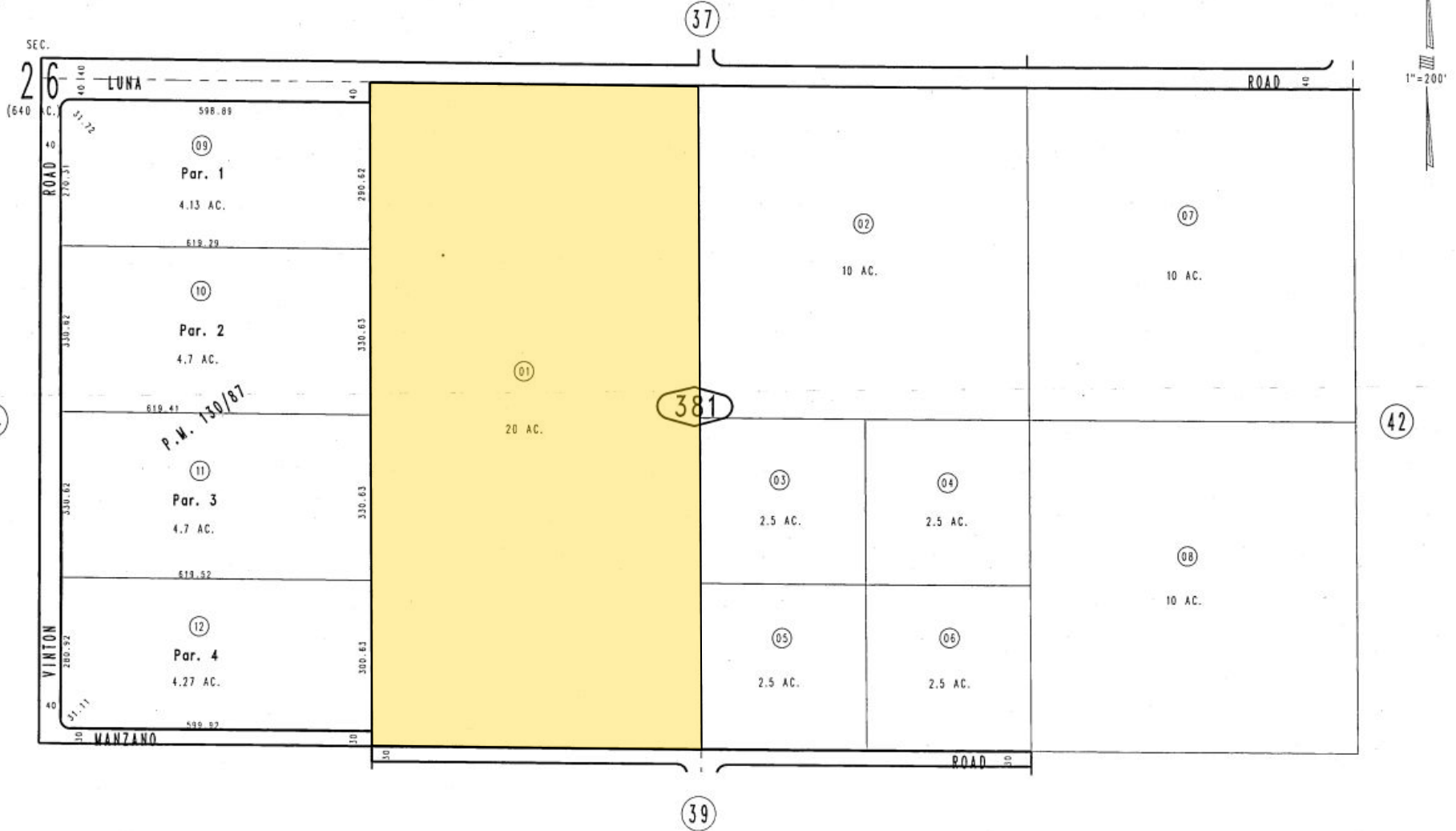
# PLAT MAP

# Luna Road | Phelan, CA

THIS MAP IS FOR THE PURPOSE OF AD VALOREM TAXATION ONLY.

N.1/2, S.E.1/4, Sec. 26, T.5N., R.6W., S.B.M.

Phelan-Wrightwood  
Joint Unified  
Tax Rate Area  
101075 3097-38



Aug.1992

Parcel Map No. 10960, P.M. 130/87

Assessor's Map  
Book 3097 Page 38  
San Bernardino County

REVISED  
03/18/08 RW  
03/10/10 LH



12180 Ridgecrest Rd. Ste. 232  
Victorville, CA 92395

760.983.2383 | [www.kurschgroup.com](http://www.kurschgroup.com)

**Jeremy Schmidt**

[jschmidt@kurschgroup.com](mailto:jschmidt@kurschgroup.com)

760.983.2593

DRE #01310579

**Aiden Schmidt**

[aschmidt@kurschgroup.com](mailto:aschmidt@kurschgroup.com)

760.983.2592

DRE #02201573