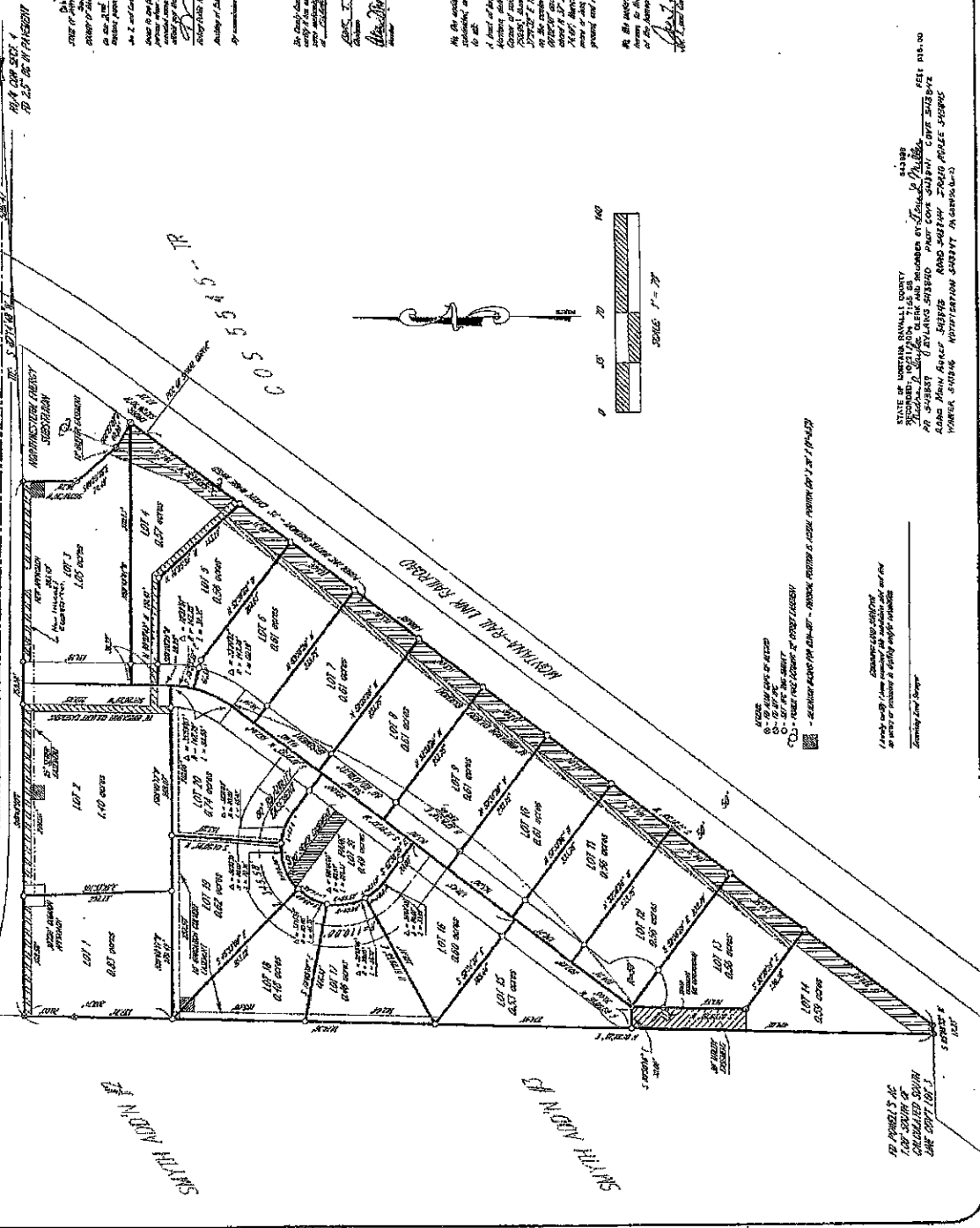


THE PLAT OF CURTISS LOTS #2, A 21 LOT SUBDIVISION
 IN GOVT LOT 3, SECTION 4, T6N, R20W, P.M.M., RAVALLI COUNTY, MONTANA
 OF AND Carolyn D. Cortiss



Additional things that should be done before the plat is filed with the county clerk are: 1. The plat should be approved by the county clerk. 2. The plat should be approved by the county clerk. 3. The plat should be approved by the county clerk.

STATE OF MONTANA
 COUNTY OF RAVALLI
 I, the undersigned, Clerk of the County of Ravalli, do hereby certify that the above and foregoing plat of Curtiss Lots #2, a 21 lot subdivision in Govt Lot 3, Section 4, T6N, R20W, P.M.M., Ravalli County, Montana, was duly filed for record in my office on this 15th day of August, 1925, and that the same is a true and correct copy of the original as filed.



WITNESSED my hand and the seal of my office at Helena, Montana, this 15th day of August, 1925.

[Signature]
 Clerk of the County of Ravalli, Montana

THE UNDERSIGNED PROPERTY OWNERS do hereby certify that the above and foregoing plat of Curtiss Lots #2, a 21 lot subdivision in Govt Lot 3, Section 4, T6N, R20W, P.M.M., Ravalli County, Montana, was duly filed for record in my office on this 15th day of August, 1925, and that the same is a true and correct copy of the original as filed.

[Signatures]
 Owners of Curtiss Lots #2

RECORDING INFORMATION

FILE NO.	1
PLAT NO.	1
SECTION	4
TOWNSHIP	T6N
RANGE	R20W
P.M.M.	

FILED IN 1925

DISCLAIMER

THIS MAP IS PROVIDED FOR LOCATION PURPOSES TO OUR CUSTOMERS, AS A COURTESY ONLY. NO LIABILITY IS HEREBY ASSUMED BY STEWART TITLE OF RAVALLI COUNTY AND/OR STEWART TITLE GUARANTY COMPANY, WHICH MAY RESULT FROM RELIANCE ON THIS MAP.