

# THE MARKETPLACE AT DELTA TOWNSHIP

430 N. Marketplace Blvd. / Lansing, MI



**MID-AMERICA**<sup>®</sup>  
Real Estate-Michigan, Inc.

**CLICK HERE FOR  
DRONE VIDEO**



RETAIL OPPORTUNITY

# THE MARKETPLACE AT DELTA TOWNSHIP



## Address

430 N. Marketplace Blvd  
Lansing, MI 48917

## Availability

2,100 SF (30' x 70')  
18,450 SF (96' x 170' Irregular)

## Features

The Marketplace at Delta Township is located at the intersection of Interstate 96/69 and W. Saginaw Highway with an interchange off of I-96/69 providing easy access and excellent freeway visibility. In addition to the front facade signage, building signage is available facing the I-96 freeway for the 18,450 square foot vacancy. The Marketplace and its national tenant lineup serve a trade area population of more than 250,000 people.

### Traffic Counts:

Saginaw Highway:  
24,959 vpd, W. of I-96  
29,674 vpd, E. of I-96

### I-96:

68,252 vpd, S. of Saginaw Highway  
59,737 vpd, N. of Saginaw Highway

## Co-Tenants



## Demographics (2025)

	1 MILE	5 MILES	10 MILES
POPULATION	5,675	67,279	251,822
HOUSEHOLDS	2,921	30,360	109,050
AVG HOUSEHOLD INCOME	\$86,190	\$90,291	\$86,078
DAYTIME POPULATION	7,147	76,375	296,367

# THE MARKETPLACE AT DELTA TOWNSHIP



PYLON SIGN



SUITE	TENANT	SQUARE FEET
001	Little Green Apple Hallmark	4,200
004	H&R Block	1,400
005	Cumbl Cookies	1,400
006	America's Best	4,200
009	Great Clips	1,400
010	Pita Way	1,400
011	GameStop	1,400
012	Baskin Robins	2,106
<b>013</b>	<b>VACANT (30' W X 70' D)</b>	<b>2,100</b>
014	Medical Weight Loss	1,400
055	Tractor Supply Company	19,038
059	Michaels	24,251
061	Boot Barn	12,600
	<b>VACANT</b>	<b>18,450</b>
100	Ulta	10,400
101	Five Below	7,800
102	Affordable Care	4,950
103	Maurices	5,000
104	Armed Forces	4,000
105	Bath & Body Works	6,500
B	Ross Dress For Less	20,388
C	PetSmart	19,940
	<b>TOTAL</b>	<b>174,353</b>
<b>NON-OWNED</b>		
	Walmart	208,750
	Lowe's	135,197
	Outlots & Dollar Tree	26,304
	<b>TOTAL NON-OWNED</b>	<b>370,251</b>
	<b>TOTAL CENTER</b>	<b>544,604</b>

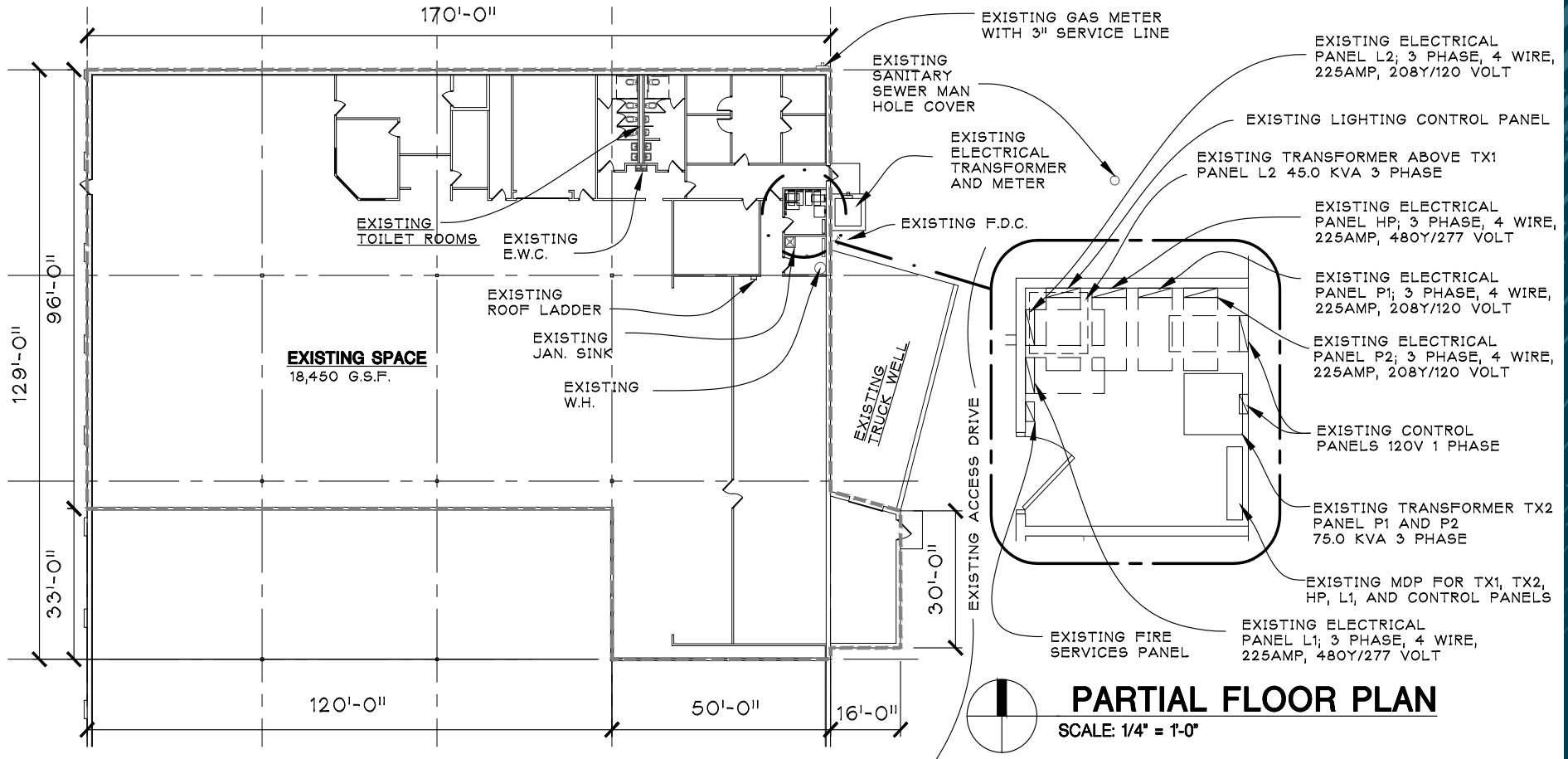


Saginaw Highway MI-43  
29,674 VPD

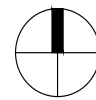
Leasing Plan

— subject offering

# THE MARKETPLACE AT DELTA TOWNSHIP



**PARTIAL FLOOR PLAN**  
SCALE: 3/64" = 1'-0"



EXISTING WATER ACCESS COVER BEHIND ADJACENT LOWES

printed for: OWNER REVIEW

01/31/22

<b>BUILDING SPACE 061</b>  THE MARKETPLACE AT DELTA TOWNSHIP, MI	<b>jeffery a. scott architects p.c.</b> farmington, mi (248) 476-8800		copyright © 2022
	project no. <b>21061</b>	sheet no. <b>LOD</b>	



# THE MARKETPLACE AT DELTA TOWNSHIP



Jared  
Gell

Mid-America Real Estate -  
Michigan, Inc.

T: 248.855.6800

[JGell@MidAmericaGrp.com](mailto:JGell@MidAmericaGrp.com)

Eric  
Unatin

Mid-America Real Estate -  
Michigan, Inc.

T: 248.855.6800

[EUnatin@MidAmericaGrp.com](mailto:EUnatin@MidAmericaGrp.com)



**MID-AMERICA**<sup>®</sup>  
Real Estate-Michigan, Inc.

38500 Woodward Ave, Suite 100  
Bloomfield Hills, Michigan 48304  
248.855.6800

[MidAmericaGrp.com](http://MidAmericaGrp.com)

CONTACT