

Office/Warehouse Space for Lease



Briarwood Revere Business Park

12508–12650 East Briarwood Avenue
Centennial, CO 80112

Building Size:

153,471 SF in Two (2) Buildings

Parking:

3.5:1,000 SF

Available:

Unit 204 - 11,459 SF

Sprinkler:

0.30 GPM/SF over 2,000 SF

Office:

Approximately 8,000 SF

Rental Rate:

\$12.50/SF NNN

Loading:

Grade Level Loading

2024 Expenses:

\$7.11/SF

Truck Doors:

One (1) Drive-In Door (9' x 10')

Availability:

Immediately

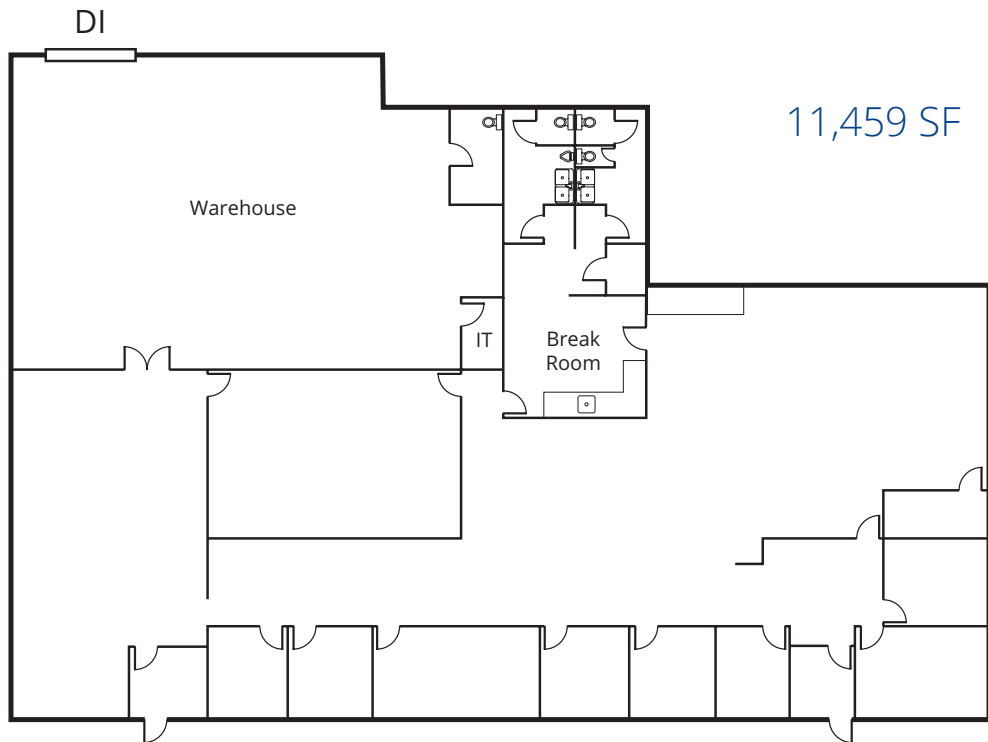
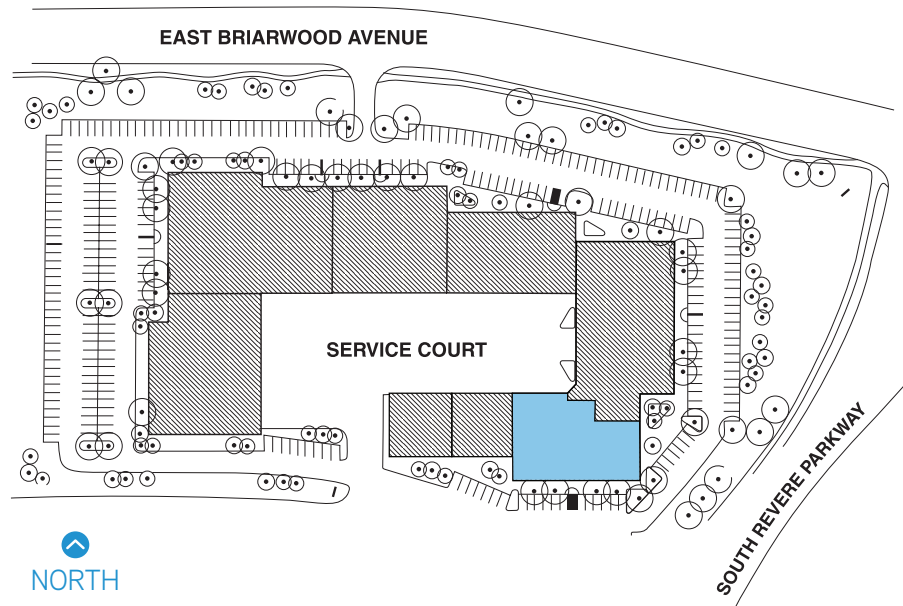
Clear Height:

15'

- › Single-Story Office/Warehouse Complex Located in the Heart of Centennial Airport
- › Office Finish from 40% to 90%
- › Convenient Access to I-25 via Arapahoe Road
- › Individual Tenant Identification Signage

Briarwood Revere Business Park
12508-12650 East Briarwood Avenue
Centennial, CO 80112

4643 S. Ulster St. | Suite 1000
Denver, CO 80237
colliers.com/denver
303 745 5800



T.J. Smith, SIOR
+1 303 283 4576
tj.smith@colliers.com

David Hazlett
+1 303 283 4573
david.hazlett@colliers.com

Brokerage Disclosure



This communication has been prepared by Colliers Denver for advertising and/or general information only. Colliers Denver makes no guarantees, representations or warranties of any kind, expressed or implied, regarding the information including, but not limited to, warranties of content, accuracy and reliability. Any interested party should undertake their own inquiries as to the accuracy of the information. Colliers Denver excludes unequivocally all inferred or implied terms, conditions and warranties arising out of this document and excludes all liability for loss and damages arising there from. This publication is the copyrighted property of Colliers Denver and/or its licensor(s). © 2022. All rights reserved. This communication is not intended to cause or induce breach of an existing listing agreement.