

**+/- 3,100 SF
FOR LEASE**

401 E Fourth St,
Bridgeport, PA 19405



FINISHED RENDERING

- **Built-To-Suite Office Space**
- **Versatile Floor Spacing**
- **Downtown Bridgeport**
- **Abundance of Parking**
- **On-Site Management**
- **24-Hour Access**
- **Coworking and office space
ideal for 15-30 individuals**

FOR MORE INFORMATION:

**ALEX FEINBERG
(610) 667-2787**

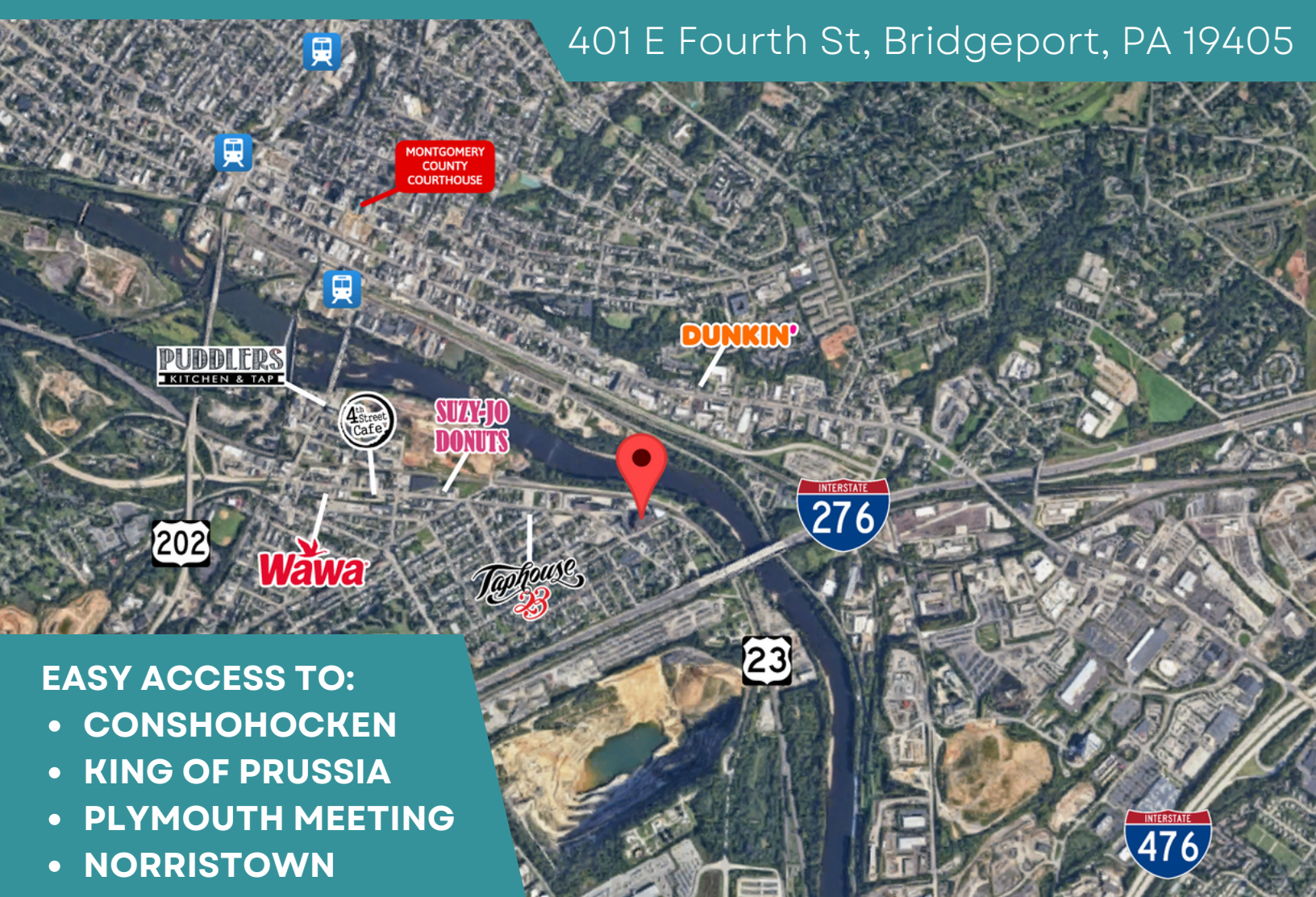
ALEX@PENDELRE.COM

**401 E FOURTH ST
BUILDING #15
BRIDGEPORT, PA 19405**



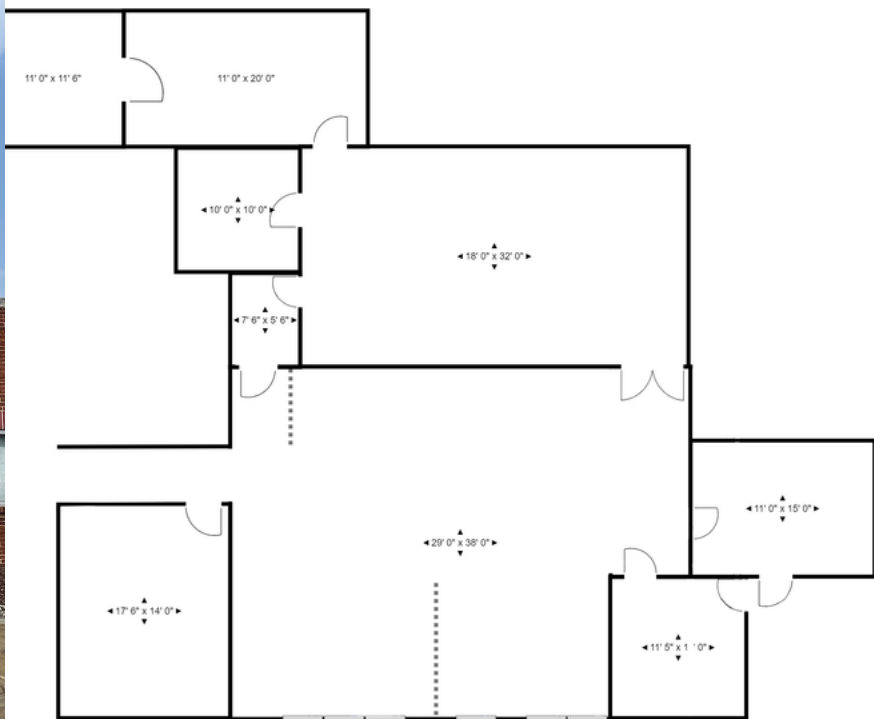


401 E Fourth St, Bridgeport, PA 19405



EASY ACCESS TO:

- CONSHOHOCKEN
- KING OF PRUSSIA
- PLYMOUTH MEETING
- NORRISTOWN



Pendelrealestate.com

Phone: (610) 667-2787

Fax: (610) 667-2977

401 E 4th St Building #15, Bridgeport, PA 19405