

FOR LEASE

# Pelham Place

SITE #1631 3093 S HIGHWAY 14, GREER SC 29650

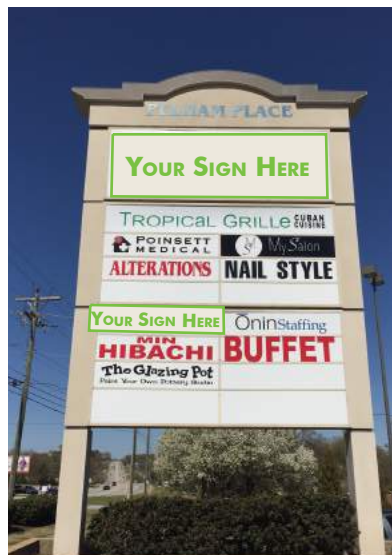
RETAIL



## PROPERTY INFO

### AVAILABLE SUITES:

- Anchor Tenant Suite | ±38,003 SF
- Suite L | ±2,100 SF
- + Great Location in growing suburban area
- + ±14,800 VPD on Highway 14  
±25,800 VPD on Pelham Road  
±13,800 VPD on Batesville Road
- + Nearby Businesses include:
  - Papa John's Pizza
  - Tropical Grille
  - Min Hibachi
  - Poinsett Medical
  - Nail Style
  - Rick Erwin's Eastside
  - Bubba Annie's
  - Gymboree
  - Sweet Basil Thai Cuisine
  - Gateway Academy
- + Contact Brokers for Pricing



FOR LEASE

# Pelham Place

SITE #1631 3093 S HIGHWAY 14, GREER SC 29650

RETAIL



## CURRENT TENANTS

- + **Anchor Suite** | ±38,003 SF | **AVAILABLE**
- + Suite A | ±1,200 SF | Chong's Alterations
- + Suites B & C | ±2,400 SF | Poinsett Medical
- + Suite D | ±1,200 SF | Nail Style
- + Suite E | ±1,900 SF | My Salon
- + Suite F | ±1,650 SF | Onin Staffing
- + Suite G | ±1,200 SF | Eye Level Learning
- + Suite H | ±1,614 SF | Papa John's
- + Suite J & K | ±2,400 SF | Min Hibachi
- + **Suite L** | ±2,100 SF | **AVAILABLE**
- + Suite M | ±1,800 SF | Tropical Grille



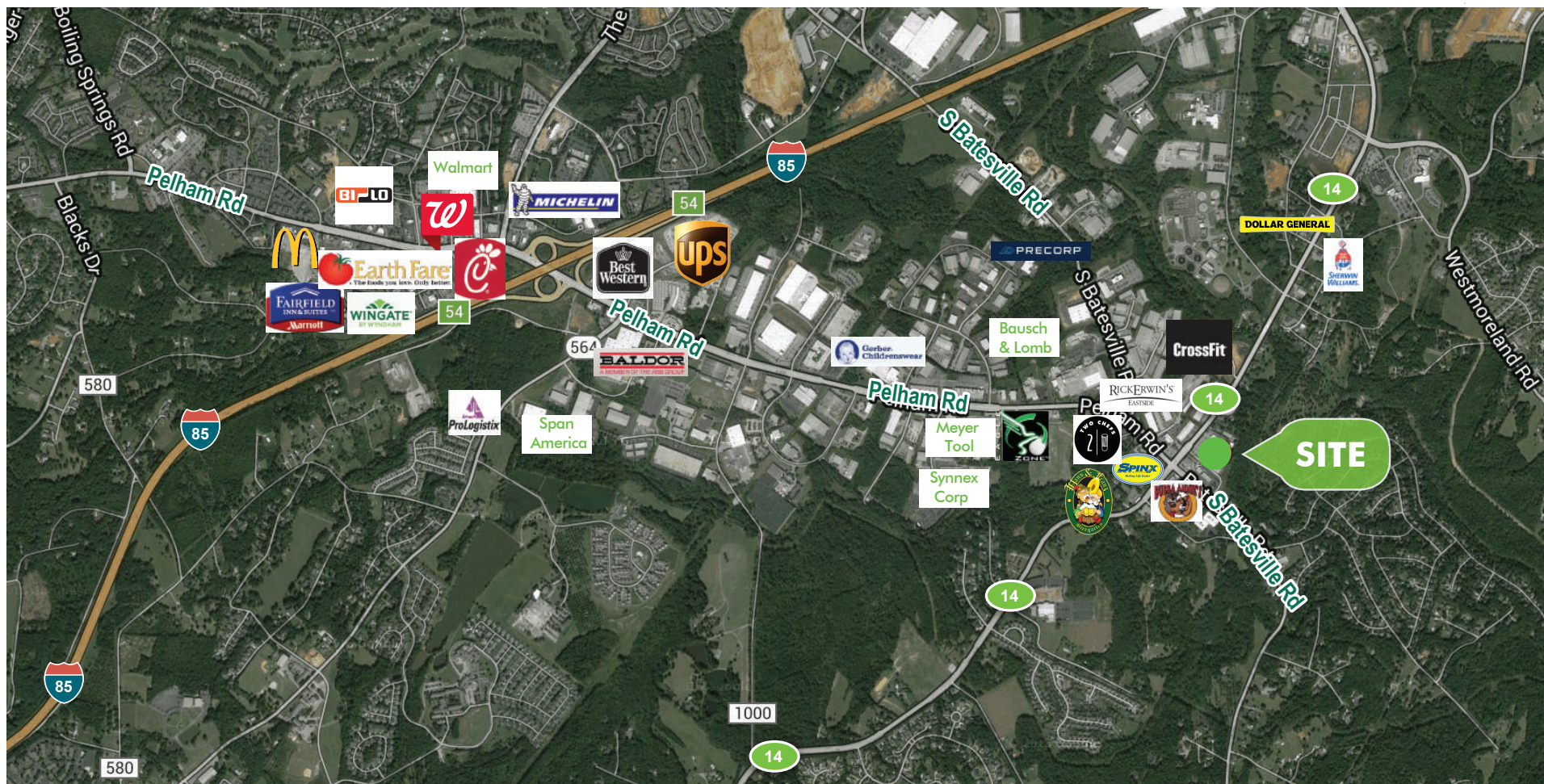


FOR LEASE

# Pelham Place

SITE #1631 3093 S HIGHWAY 14, GREER SC 29650

RETAIL



© 2017 CBRE, Inc. All rights reserved. This information has been obtained from sources believed reliable, but has not been verified for accuracy or completeness. You should conduct a careful, independent investigation of the property and verify all information. Any reliance on this information is solely at your own risk. CBRE and the CBRE logo are service marks of CBRE, Inc. All other marks displayed on this document are the property of their respective owners. Photos herein are the property of their respective owners. Use of these images without the express written consent of the owner is prohibited.



FOR LEASE

# Pelham Place

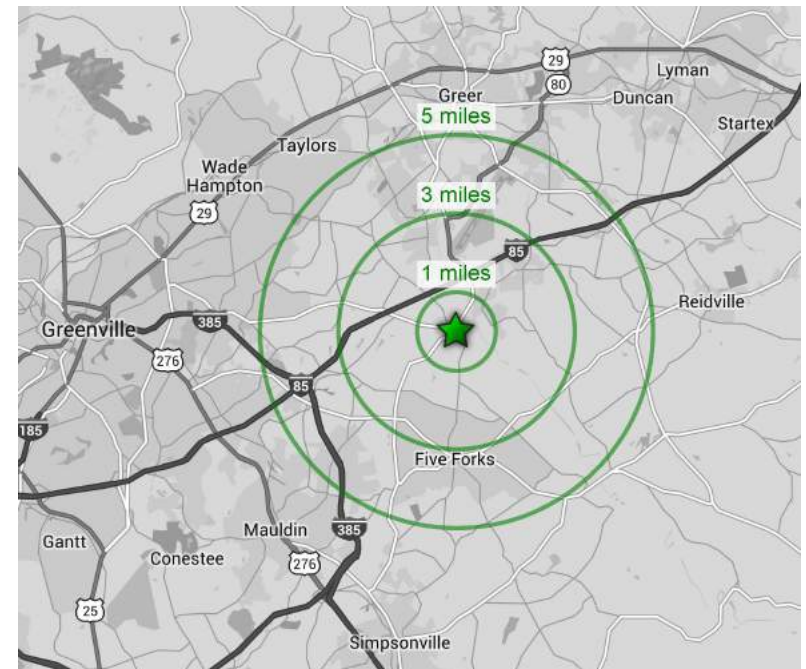
SITE #1631 3093 S HIGHWAY 14, GREER SC 29650

RETAIL



## 2018 DEMOGRAPHICS

	1 MILE	3 MILES	5 MILES
Population	3,365	32,871	104,688
Est. 2023 Population	3,688	35,995	114,182
Daytime Population	7,780	42,016	136,792
Median Age	39.1	40.2	39.8
Households	1,054	12,335	39,781
2023 Est Households	1,157	13,484	43,264
Average Income	\$111,488	\$120,381	\$106,985
Average Housing Value	\$343,448	\$389,475	\$303,742



## CONTACT US

### Tommy Molin, CCIM

Vice President | Retail Services  
+1 864 527 6085  
tommy.molin@cbre.com

### Brian Scurlock

Senior Associate | Retail Services  
+1 864 527 6071  
brian.scurlock@cbre.com

[www.cbre.com/greenville](http://www.cbre.com/greenville)

**CBRE**