

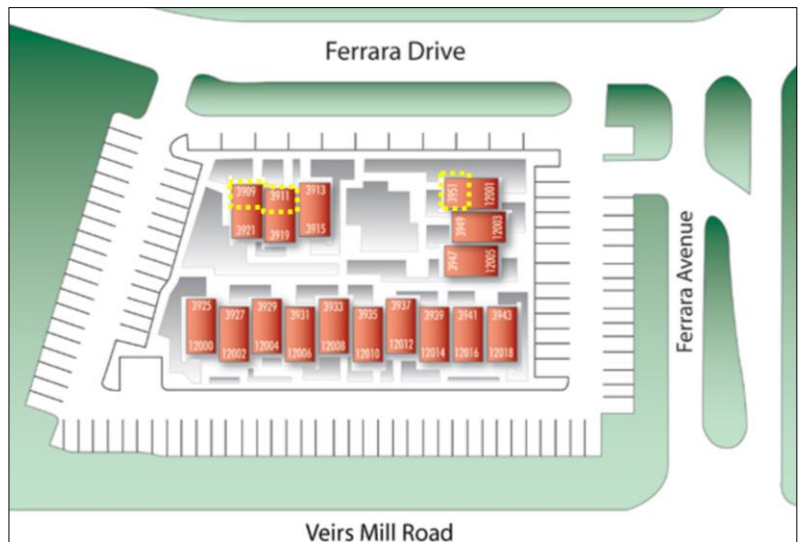
# AVAILABLE FOR LEASE

## CONNECTICUT BELAIR MEDICAL PARK

12000-12018 Veirs Mill Road & 3909-3951 Ferrara Drive  
Silver Spring, Maryland 20906



*Located on the corner of Veirs Mill Road and Ferrara Avenue, one block north of Connecticut Avenue.*



For more details or to arrange a tour please contact:

# 301.961.9696

**Sam Farnum**

Ext. 216

[sfarnum@amrcommercial.com](mailto:sfarnum@amrcommercial.com)

**Bill Montrose**

Ext. 203

[wmontrose@amrcommercial.com](mailto:wmontrose@amrcommercial.com)

Although all information furnished is from sources we deem reliable, such information has not been verified and no express representation is made nor is any to be implied as to the accuracy thereof, and it is submitted subject to errors, omissions, or other conditions.



ALEXANDER, MONTROSE, RITTENBERG  
Commercial Real Estate Brokerage  
Est. 1994

*Celebrating*  
**31** Years  
1994-2025

4849 Rugby Avenue ♦ Suite 200 ♦ Bethesda, Maryland 20814 ♦ 301.961.9696 ♦ Fax 301.656.7551 ♦ [www.amrcommercial.com](http://www.amrcommercial.com)

# 3909 Ferrara Drive 1,400 S.F.



NOT TO SCALE | MEASUREMENTS APPROXIMATE

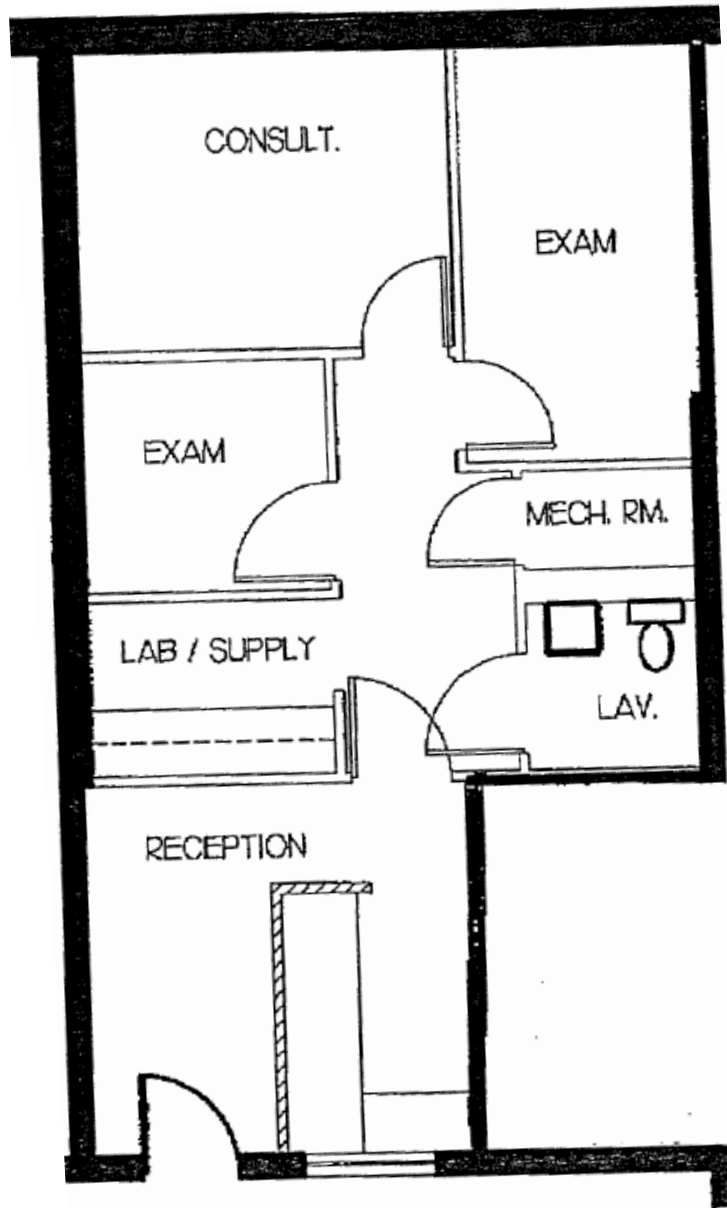
Although all information furnished is from sources we deem reliable, such information has not been verified and no express representation is made nor is any to be implied as to the accuracy thereof, and it is submitted subject to errors, omissions, or other conditions.



ALEXANDER, MONTROSE, RITTENBERG  
Commercial Real Estate Brokerage  
Est. 1994

*Celebrating*  
**31**  
*Years*  
1994-2025

**3951 Ferrara Drive  
615 S.F.**



NOT TO SCALE | MEASUREMENTS APPROXIMATE

Although all information furnished is from sources we deem reliable, such information has not been verified and no express representation is made nor is any to be implied as to the accuracy thereof, and it is submitted subject to errors, omissions, or other conditions.



ALEXANDER, MONTROSE, RITTENBERG  
Commercial Real Estate Brokerage  
Est. 1994

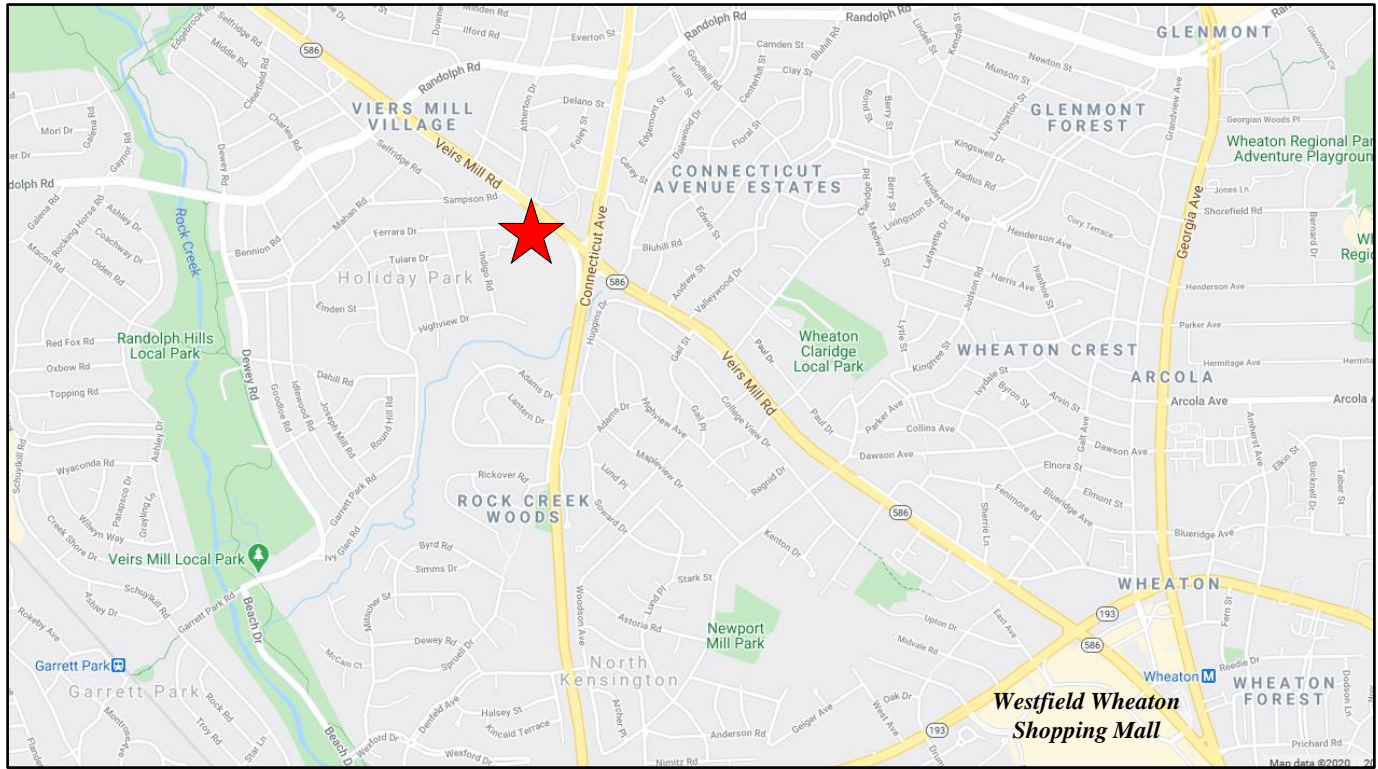
*Celebrating*  
**31**  
*Years*  
1994-2025



# CONNECTICUT BELAIR MEDICAL PARK

12000-12018 Veirs Mill Road & 3909-3951 Ferrara Drive

Silver Spring, Maryland 20906



Although all information furnished is from sources we deem reliable, such information has not been verified and no express representation is made nor is any to be implied as to the accuracy thereof, and it is submitted subject to errors, omissions, or other conditions.



ALEXANDER, MONTROSE, RITTENBERG  
Commercial Real Estate Brokerage  
Est. 1994

Celebrating  
**31** Years  
1994-2025

4849 Rugby Avenue ♦ Suite 200 ♦ Bethesda, Maryland 20814 ♦ 301.961.9696 ♦ Fax 301.656.7551 ♦ [www.amrcommercial.com](http://www.amrcommercial.com)