



SHOPS AT POINT RUSTON

*Turnkey medical space and second
gen restaurant space for lease in the
waterfront Point Ruston shopping center*

5105 MAIN ST, RUSTON, WA 98407

SHOPS AT POINT RUSTON

*Second gen restaurant space
available now with signage in the
heart of Point Ruston*

2.5 mile waterfront promenade at Point Ruston
attracts locals and visitors

Restaurants and cafes along Ruston Way

Visitors enjoy a variety of cuisines and outdoor
dining with ocean views

Located among a diverse mix of tenants

12,688 CPD on Ruston Way

Minutes from Point Defiance Park with views of
Puget Sound

AVAILABILITY

FORMER MIO SUSHI

2,080 SF

Call for
pricing

2,080 SF

AVAILABLE NOW



SHOPS AT POINT RUSTON

*Medical space available now with
signage in the heart of Point Ruston*

2.5 mile waterfront promenade at Point Ruston
attracts locals and visitors

Restaurants and cafes along Ruston Way

Visitors enjoy a variety of cuisines and outdoor
dining with ocean views

Located among a diverse mix of tenants

12,688 CPD on Ruston Way

Minutes from Point Defiance Park with views of
Puget Sound

AVAILABILITY

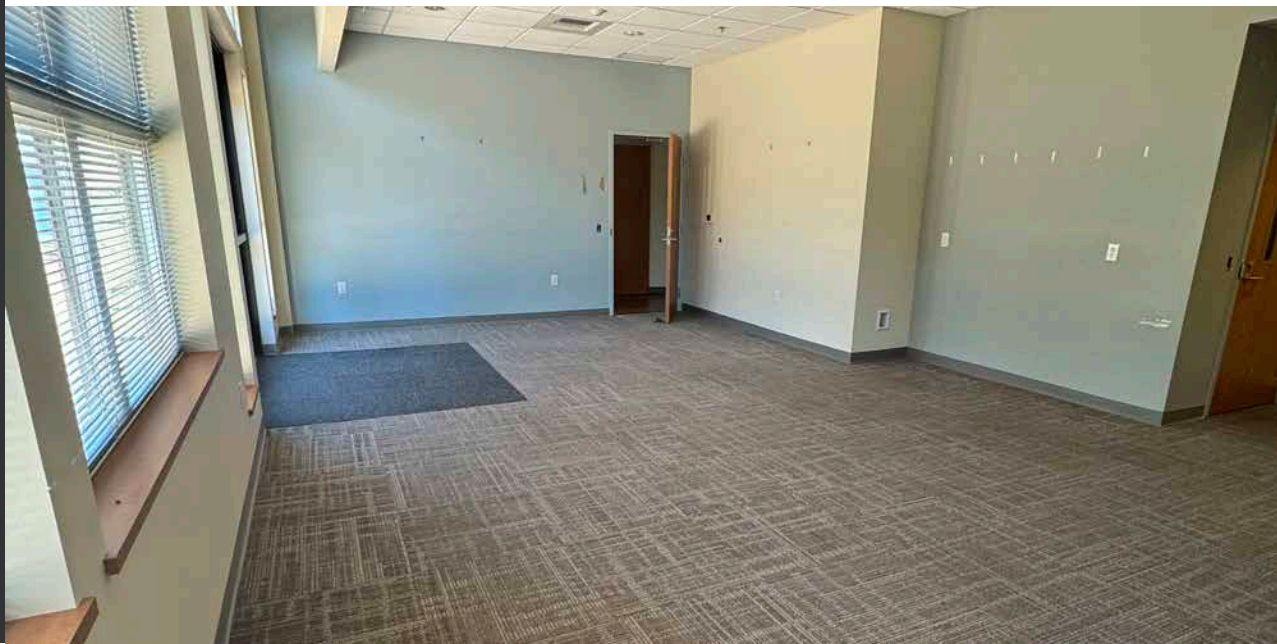
FORMER FRANCISCAN
PLASTIC SURGERY
ASSOCIATES

6,000 SF

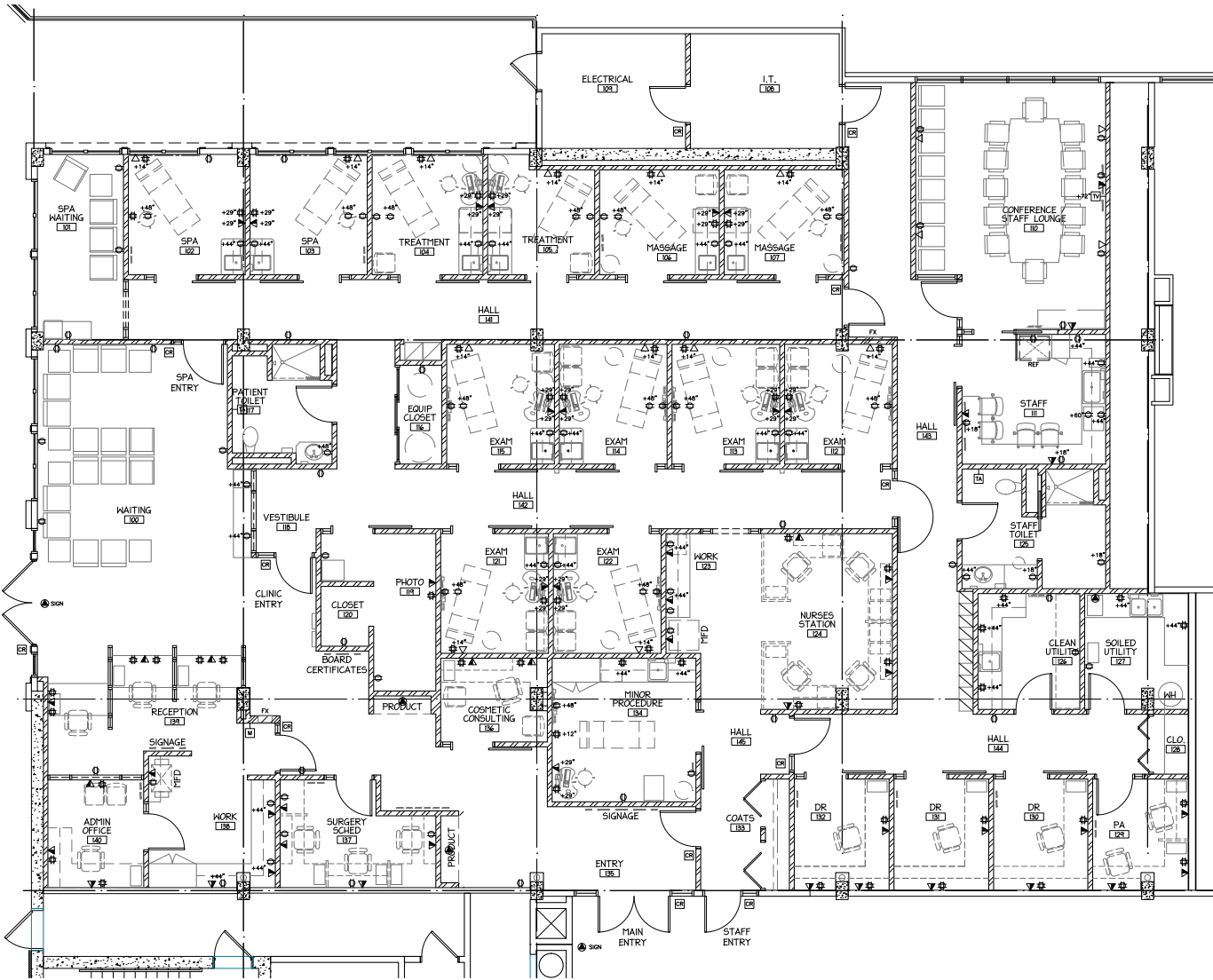
Call for
pricing

6,000 SF

AVAILABLE NOW



TURNKEY MEDICAL SPACE



LOCATED IN A *PANORAMIC SEASIDE* *SETTING* AMONG A MIX OF RETAILERS

Ruston Way is a place where locals and visitors come to relax and enjoy the beauty of the Pacific Northwest. Featuring a long, picturesque waterfront promenade that stretches for approximately 2.5 miles along the shores of Puget Sound, it is an excellent location for water-related activities such as kayaking, paddleboarding, and boating. There are numerous restaurants and cafes along Ruston Way, making it a popular dining destination in Tacoma. Visitors enjoy a variety of cuisines, seafood, and outdoor dining with ocean views.

2,080 SF
SECOND GEN
RESTAURANT AVAILABLE

6,000 SF
TURNKEY
MEDICAL SPACE
AVAILABLE

SHOPS AT POINT RUSTON



OVER 200,000 SF
OF RETAILERS AT
POINT RUSTON



2.7M VISITORS
TO POINT
RUSTON IN THE
LAST 12 MONTHS



3,700 STALLS OF
PARKING AT POINT
RUSTON



RESORT-INSPIRED
VILLAGE WITH
PANORAMIC
OCEAN VIEWS



DEMOGRAPHICS

POPULATION

	1 Mile	3 Miles	5 Miles
2010 CENSUS	6,319	42,862	124,429
2020 CENSUS	7,937	47,227	136,751
2024 ESTIMATED	8,196	46,406	147,147
2029 PROJECTED	8,963	47,307	152,164

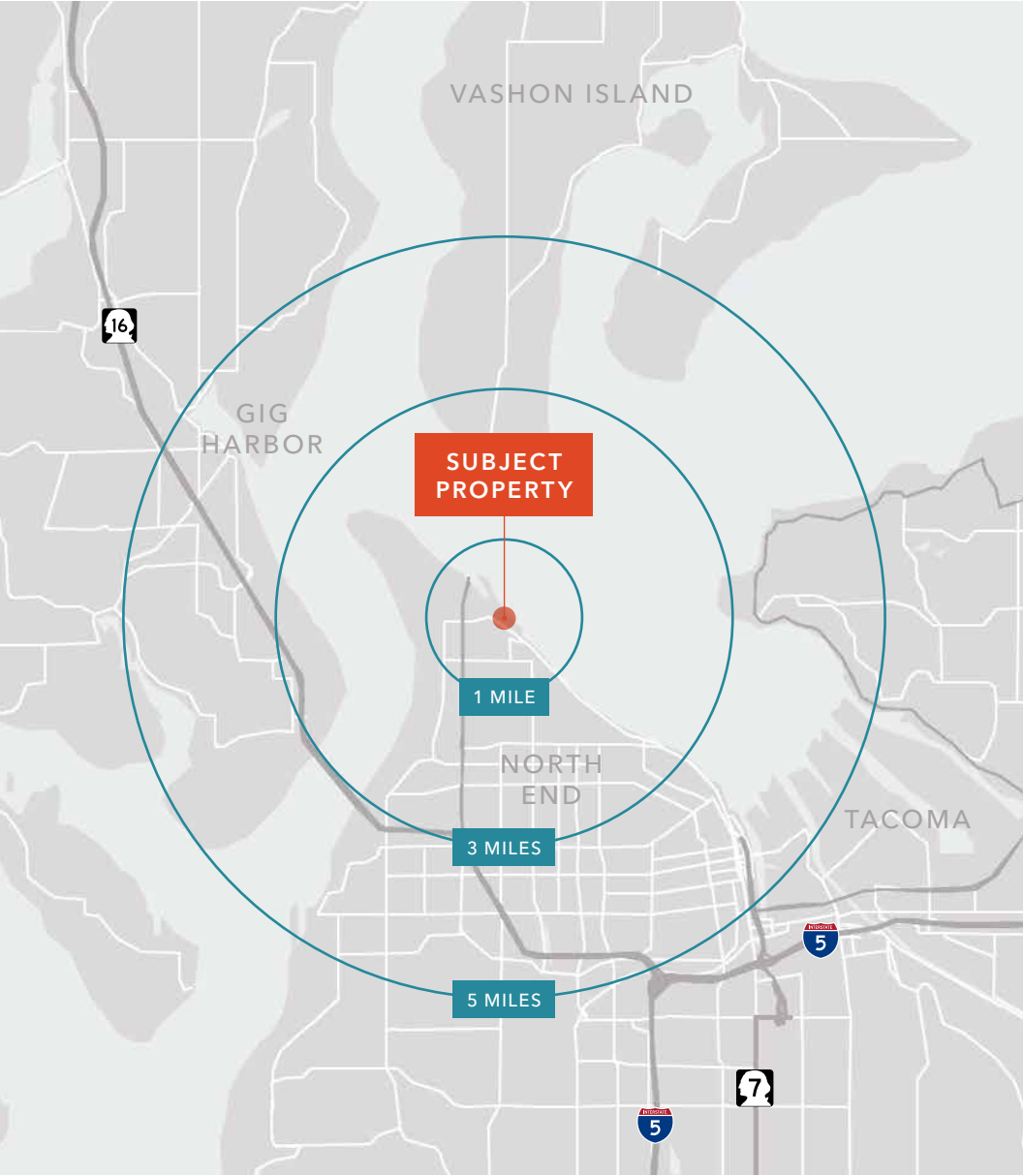
MEDIAN AGE & GENDER

	1 Mile	3 Miles	5 Miles
MEDIAN AGE	44.1	44.3	42.2
% FEMALE	50.4%	49.8%	49.3%
% MALE	44.3%	40.4%	39.5%

HOUSEHOLD INCOME

	1 Mile	3 Miles	5 Miles
2024 MEDIAN	\$114,292	\$115,928	\$98,917
2029 MEDIAN PROJECTED	\$117,022	\$119,019	\$100,388
2024 AVERAGE	\$158,627	\$148,950	\$132,517
2029 AVERAGE PROJECTED	\$166,467	\$156,687	\$137,197

Data Source: ©2025, Sites USA





SHOPS AT POINT RUSTON

*For more information on
this property, please contact*

BLAKE WEBER
206.898.1231
blake.weber@kidder.com

NED WHALEN
206.491.5998
ned.whalen@kidder.com

DON WHITTLES
253.208.2257
don.whittles@kidder.com

KIDDER.COM

This information supplied herein is from sources we deem reliable. It is provided without any representation, warranty, or guarantee, expressed or implied as to its accuracy. Prospective Buyer or Tenant should conduct an independent investigation and verification of all matters deemed to be material, including, but not limited to, statements of income and expenses. Consult your attorney, accountant, or other professional advisor. All Kidder Mathews designs are the sole property of Kidder Mathews. Branded materials and layouts are not authorized for use by any other firm or person.

