

# 147 Natoma Street

**SOUTH FINANCIAL DISTRICT**

**HISTORIC UNDERWRITERS' FIRE PATROL HQ BUILDING**

**CREATIVE OFFICE SPACE FOR LEASE**

**Available NOW:**

**2nd floor – 2,300 RSF +/-**



VIRTUAL TOUR LINK

**3rd Floor – 2,300 RSF +/-**



VIRTUAL TOUR LINK

**EXCLUSIVELY REPRESENTED BY:**

**Bryan B. Colton**

bryancolton@coltoncommercialsf.com  
(415) 595-6959  
License #: 02111407

**Wellington Chang**

wchang@coltoncommercialsf.com  
(415) 418-0932  
License #: 02128739

**Casaldra Andreassen**

casaldra@coltoncommercialsf.com  
(631) 478-8343  
License #: 02028086

**Eric Risberg**

ericrisberg@skyscraper.com  
(415) 570-1242  
License #: 01231982



## 2ND FLOOR

# 2,300 RSF +/-

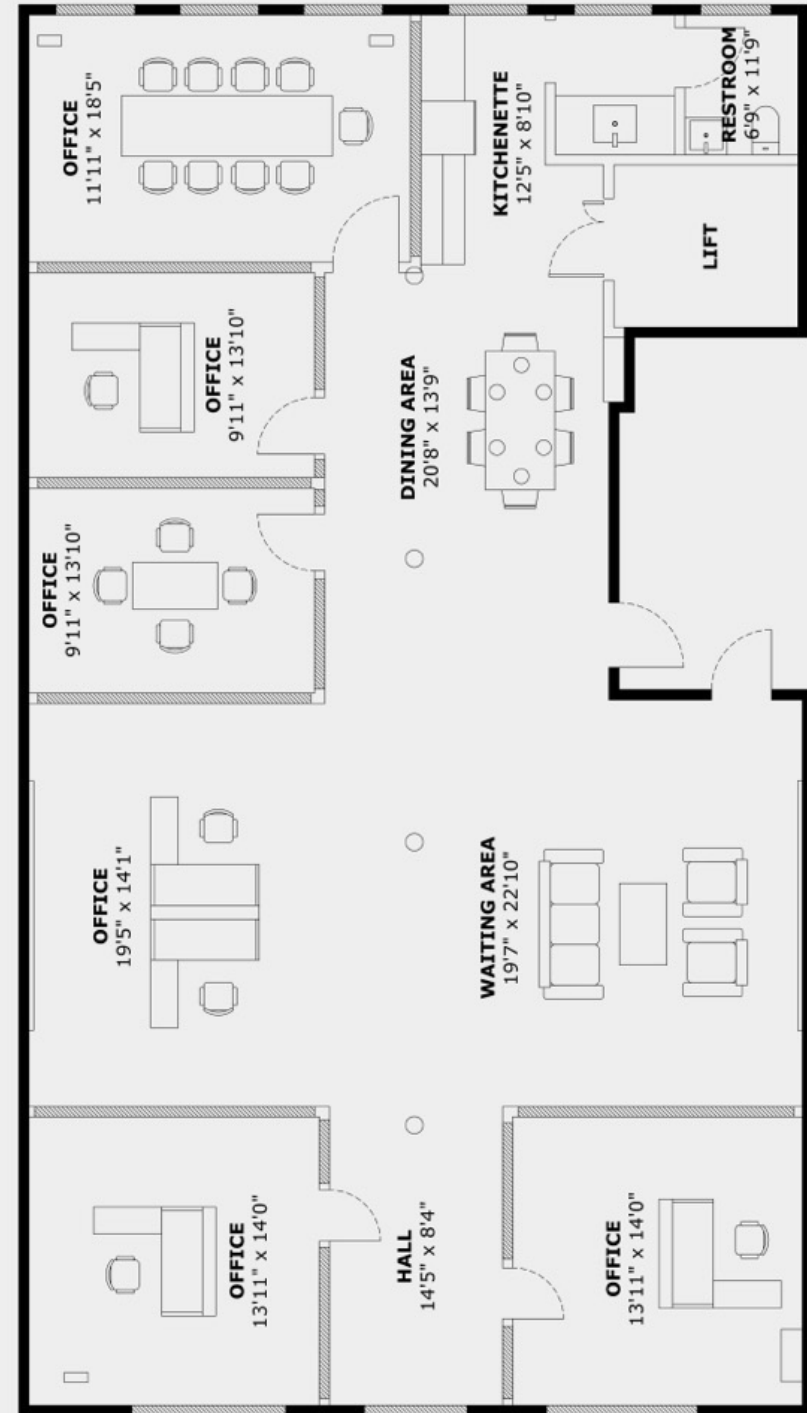


**VIRTUAL TOUR LINK**  
**WEBSITE LINK**

### SPACE HIGHLIGHTS:

- Brick and timber build
- High Ceilings
- Large open area
- 4 private offices / Meeting rooms
- Conference room
- Some furniture
- Kitchen
- In suite bathroom
- Operable windows
- Blocks from BART

### FLEXIBLE TERM



## 3RD FLOOR PENTHOUSE

# 2,300 RSF +/-



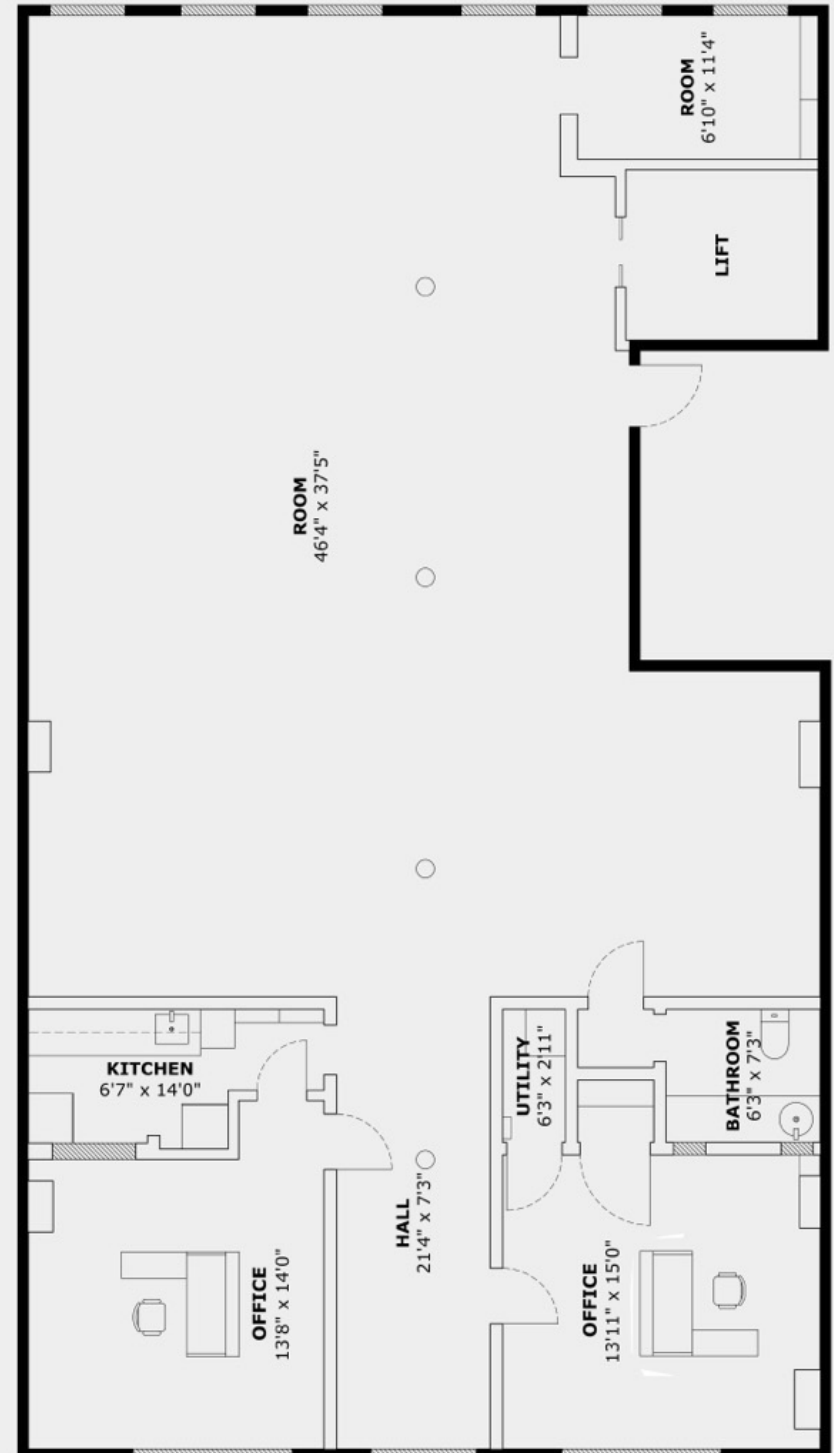
**VIRTUAL TOUR LINK**  
**WEBSITE LINK**

### SPACE HIGHLIGHTS:

- Open Area
- Conference Room
- Private Office
- Brick & Timber Build
- Full Floor Identity
- High ceilings
- Kitchenette
- Excellent Natural Light
- Cityscape views
- Operable windows
- In suite bathroom with shower
- Block from BART

---

### FLEXIBLE TERM

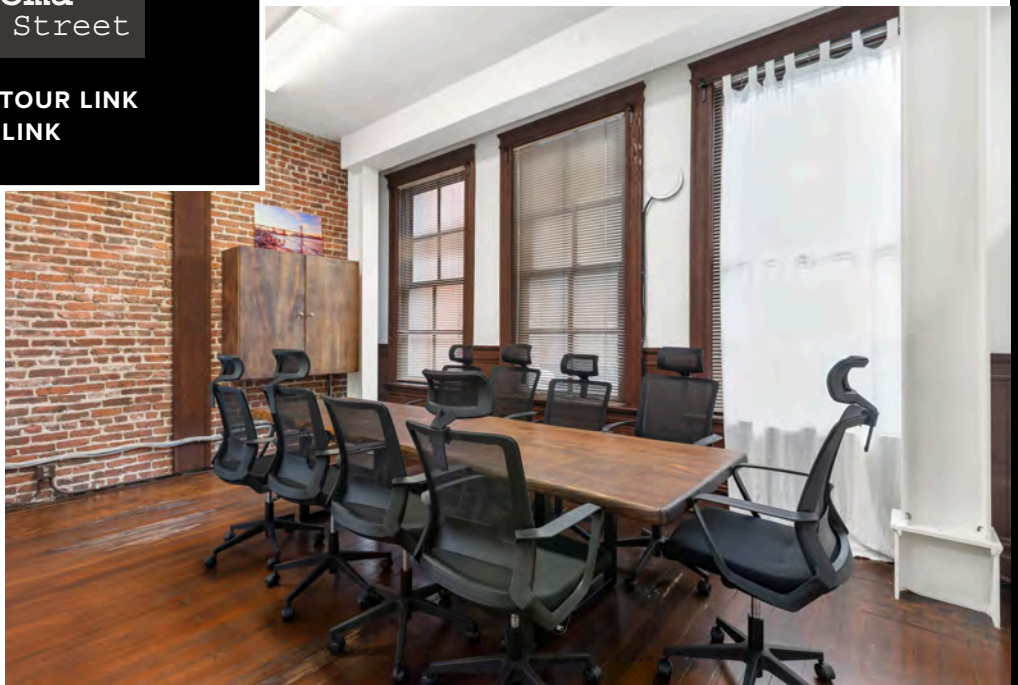
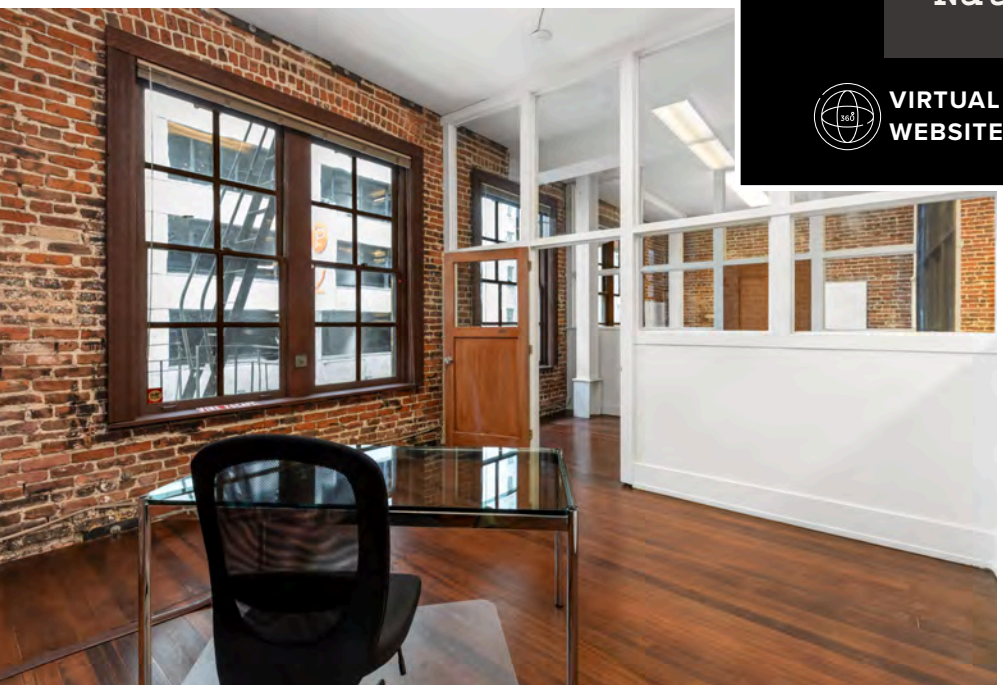


FLOOR PLAN - 3RD FLOOR



**147**  
Natoma  
Street

 **VIRTUAL TOUR LINK**  
**WEBSITE LINK**



2ND FLOOR PHOTOS

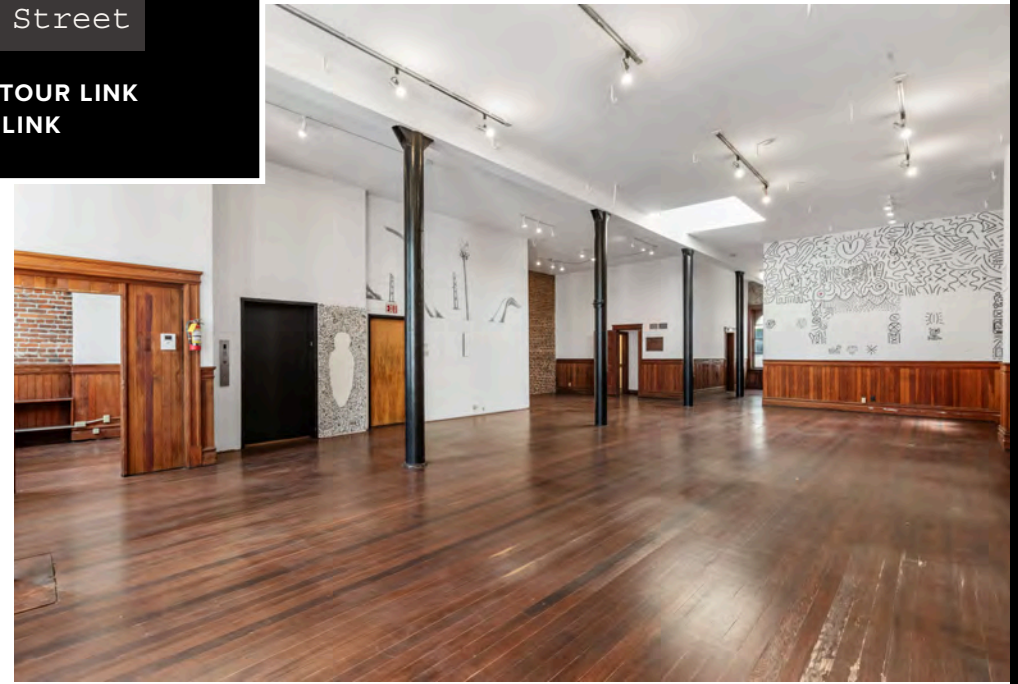


The foregoing is based upon information provided by others which we believe is accurate, however, no guarantee, warranty or representation is made. We recommend that all interested parties independently verify its accuracy and completeness. As well, any projections, assumptions, opinions, or estimates are used for example only and do not represent the current or future performance of the identified property. Your tax, financial, legal and toxic substance advisors should conduct a careful independent investigation of the property and its suitability for your needs, including land use limitations. The property is subject to prior lease, sale, change in price, or withdrawal from the market without notice.



**147**  
 Natoma  
 Street

 **VIRTUAL TOUR LINK**  
**WEBSITE LINK**



3RD FLOOR PHOTOS



The foregoing is based upon information provided by others which we believe is accurate, however, no guarantee, warranty or representation is made. We recommend that all interested parties independently verify its accuracy and completeness. As well, any projections, assumptions, opinions, or estimates are used for example only and do not represent the current or future performance of the identified property. Your tax, financial, legal and toxic substance advisors should conduct a careful independent investigation of the property and its suitability for your needs, including land use limitations. The property is subject to prior lease, sale, change in price, or withdrawal from the market without notice.

**147**  
**Natoma**  
 Street

 <https://147natoma.com/>

**LOCATION**

The property is only 3 short blocks to the Montgomery BART Station and is a short walk to the Ferry Building and CalTrans. This highly desirable central location is not only a convenient transportation hub, but offers many restaurants and nightlife options and coffee shops nearby. The building's neighbors include: the San Francisco Museum of Modern Art, the San Francisco Academy of Art, and Yelp's Headquarters. Despite its central location where all the action is, it is on a quiet alley street—with on-street parking meters and a parking garage.



**mourad**



**EQUATOR COFFEES**



**TRACE**



**YERBA BUENA GARDENS** At the Cultural Heart of San Francisco



**benu**



# 147 Natoma Street

## NEARBY RESTAURANTS:

- 1 Mourad
- 2 Equator Coffees
- 3 Blue Bottle Coffee
- 4 Sana'a cafe
- 5 Benu
- 6 TRACE
- 7 Fogo de Chão Brazilian Stea...
- 8 Soma Eats
- 9 Lao Table
- 10 The Bird
- 11 Pink Elephant

## NEARBY BUSINESSES & ATTRACTIONS:

- 1 San Francisco Museum of M...
- 2 Yerba Buena Center for the A...
- 3 Museum of the African Dias...
- 4 Moscone Center
- 5 LinkedIn
- 6 W San Francisco
- 7 The Clancy, Autograph Colle...
- 8 Children's Creativity Museum
- 9 Bloomingdale's
- 10 Metreon



<https://147natoma.com/>

**Bryan B. Colton**

bryancolton@coltoncommercialsf.com  
(415) 595-6959  
License #: 02111407

**Casaldra Andreassen**

casaldra@coltoncommercialsf.com  
(631) 478-8343  
License #: 02028086

**Wellington Chang**

wchang@coltoncommercialsf.com  
(415) 418-0932  
License #: 02128739

**Eric Risberg**

ericrisberg@skyscraper.com  
(415) 570-1242  
License #: 01231982



### NEAR TRANSPORTATION



### NEAR RESTAURANTS



### NEAR CAFES



### NEAR HOTELS



### NEAR SHOPPING

