

Building Better Communities With.....



209 NY-59 Airmont, NY, SUITE 217 - 211

6,724 SF of Office Space Available In the Airmont Area, \$35 NNN

Features Of The Spaces

Suite 217

4,000 SF Retail space (currently build-out for offices)

Suite 211

2,724 SF Retail space (currently built as a restaurant with a fully equipped Kitchen)

- Ample Parking
- In a bustling intersection
- Over 20,000+ Cars pass this location Daily
- This location Is approved for medical use
- Close to Good Same Hospital.
- Close to Chase banks, Restaurants, Walmart, and Much more...

Suite #217



Suite #211



Suite 217

- Taxes Monthly estimated \$2,594.43
- Insurance & CAM Monthly estimated total of \$1,172.50

Suite 211

- taxes Monthly estimated \$1,767.23.
- Insurance & CAM Monthly estimated total \$798.70

Joel Gruber Licensed Real Estate Salesperson, NYS & NJ Cell: 845-821-6502

Email: Joel.Gruber@randcommercial.com

Rand Commercial Copyrighted 2021. No warranty or representation, express or implied, is made to the accuracy or completeness of the information contained herein, and same is submitted to errors, omissions, change of price or other conditions, withdrawn without notice, and to any special listing conditions by the property owner(s).

As applicable, we make no representation as to the condition of the property (or properties) in question.

Building Better Communities With.....



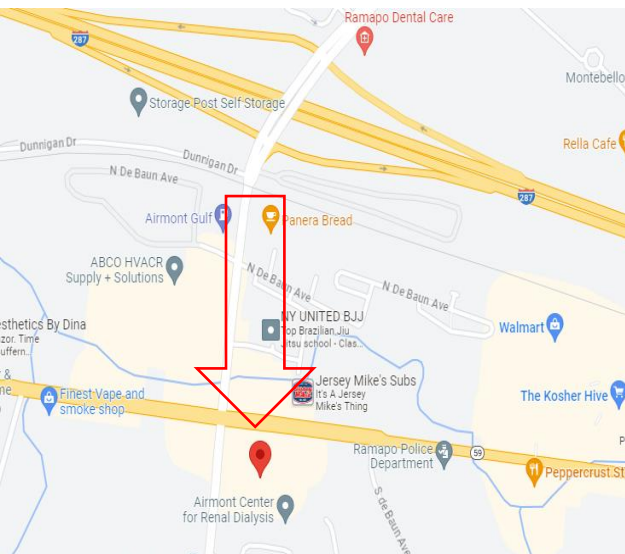
209 NY-59 Airmont, NY, SUITE 217 - 211

AIRMONT VILLAGE
SQUARE

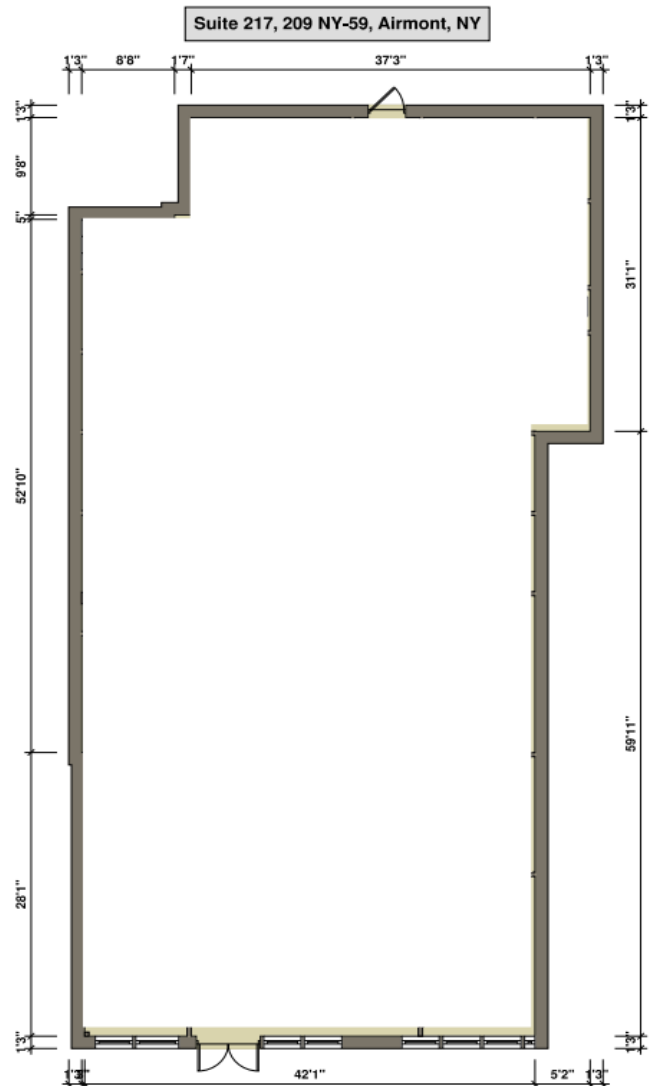
Is Located in the Heart of Airmont,

On the Corner of Route 59 and
Airmont Road,

Right off Exit 14B of the NYS
Thruway (I-287/87),



Floor Plan



Joel Gruber Licensed Real Estate Salesperson, NYS & NJ Cell: 845-821-6502

Email: Joel.Grubert@randcommercial.com

Rand Commercial Copyrighted 2021. No warranty or representation, express or implied, is made to the accuracy or completeness of the information contained herein, and same is submitted to errors, omissions, change of price or other conditions, withdrawn without notice, and to any special listing conditions by the property owner(s).

As applicable, we make no representation as to the condition of the property (or properties) in question.