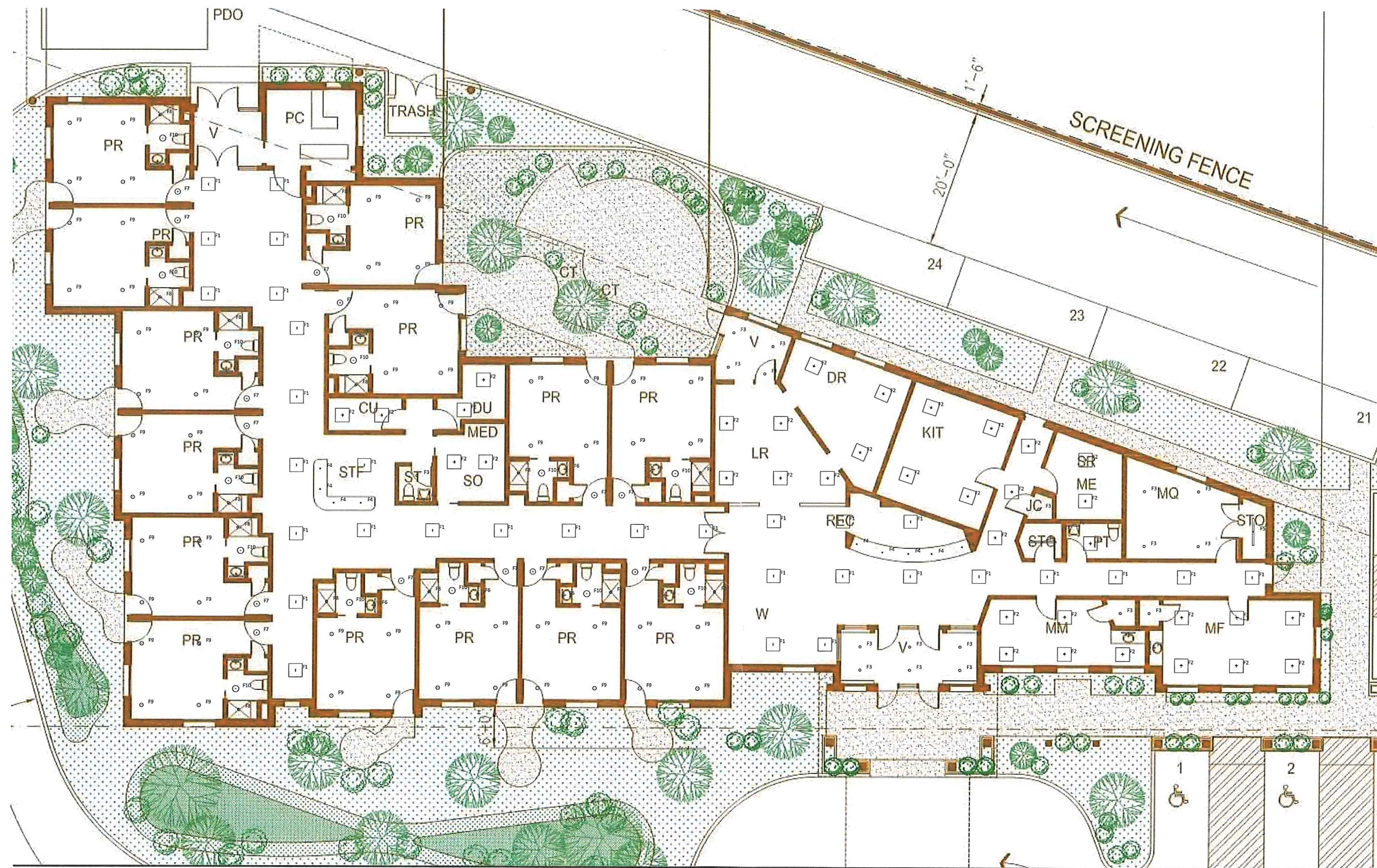




*Bloomingdale  
Hospice Center*

*Bloomingdale  
Hospice Center*





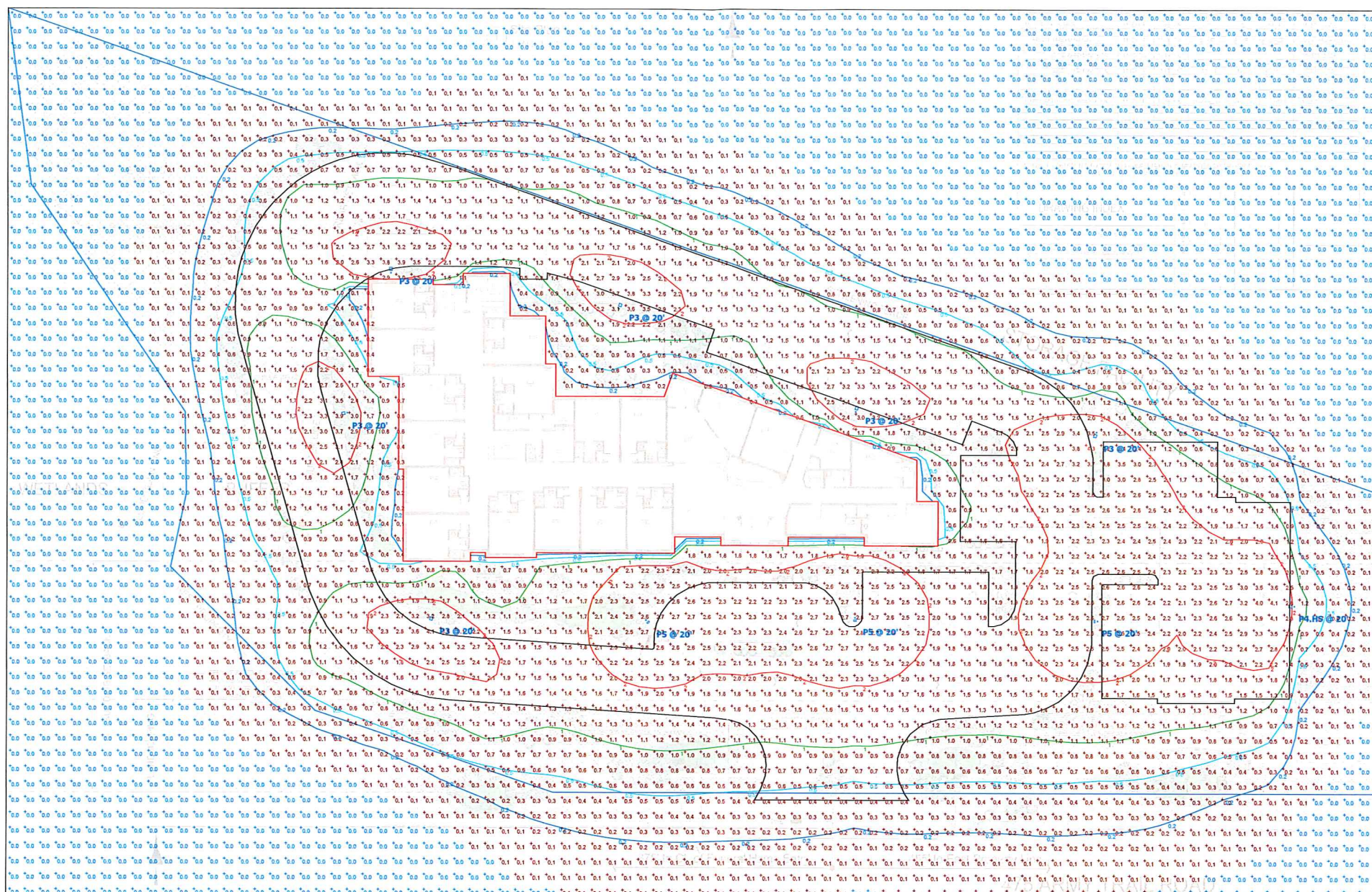
Symbol	Qty	LLF	Description	Type
□	32	0.950	2BLT2 40L ADP LP835	F1
•	35	0.950	EPANL 2X2 4000LM 80CRI 30K	F2
○	18	0.950	LDN4 30_15 LO4AR LSS	F3
○	9	0.950	2LEDTG2C-830N-HZXX w_ 2LEDDRVG2-10-120	F4
—	2	0.950	CSS L48 ALO3 MVOLT SWW3 80CRI (4000LM 3500K)	F5
—	18	0.950	FMVCSLS 24IN MVOLT 30K35K40K	F6
○	14	0.950	FMML 13830	F7
○	14	0.950	JSF 5IN 07LM 30K 90CRI 120 FRPC WH	F8
○	56	0.950	JSF 7IN 10LM 30K 90CRI 120 FRPC WH	F9
○	14	0.950	JSF 13IN 18LM 30K 90CRI 120 FRPC WH	F10

Calculation Summary							
Label	CalcType	Units	Avg	Max	Min	Avg/Min	Max/Min

- Notes :
1. Calculation Work Plane :
  2. Fixture Mounting Height :
  3. Calculation Point Spacing :
  4. Room Reflectances : 80/50/20

\*\*This document contains confidential and proprietary information of KSA Lighting & Controls. This document may only be used by or for the benefit of KSA Lighting & Controls representatives and customers. This lighting layout is not a professional engineering drawing and is provided for informational purposes only, without warranty as to accuracy, completeness, reliability or otherwise. KSA Lighting & Controls is not responsible for specifying the light fixtures or illumination requirements for any specific project, nor is it responsible for meeting municipal or building code requirements. It is the obligation of the end-user to consult with a professional engineering advisor to determine whether this lighting layout meets the applicable project requirements for lighting system performance, safety, suitability and effectiveness for use in a particular application. Field verification is recommended when calculations are based on end-user or customer-provided information. End-user environment and application (including, but not limited to, voltage variation and dirt accumulation) can cause actual field performance to differ from the calculated photometric performance represented in this lighting layout. In no event will KSA Lighting & Controls be responsible for any loss resulting from any use of this drawing.





Plan View  
Scale - 1/16" = 1ft

Schedule										
Symbol	Label	QTY	Manufacturer	Catalog Number	Description	Number Lamps	Lumens per Lamp	LLF	Wattage	Distribution
	P3	6	Lithonia Lighting	RSX1 LED P1 40K R3	RSX Area Fixture Size 1 P1 Lumen Package 4000K CCT Type R3 Distribution	1	7096	0.93	51.34	TYPE III, SHORT, BUG RATING: B1 - U0 - G2
	P5	3	Lithonia Lighting	RSX1 LED P3 40K R5	RSX Area Fixture Size 1 P3 Lumen Package 4000K CCT Type R5 Distribution	1	14396	0.93	109.44	TYPE VS, BUG RATING: B4 - U0 - G2
	P4.HS	1	Lithonia Lighting	RSX1 LED P1 40K R4 HS	RSX Area Fixture Size 1 P1 Lumen Package 4000K CCT Type R4 Distribution with HS Shield	1	5223	0.93	51.3435	TYPE IV, SHORT, BUG RATING: B1 - U0 - G2
	VF	2	Lithonia Lighting	WDGE2 LED P3 40K 80CRI VF	WDGE2 LED WITH P3 - PERFORMANCE PACKAGE, 4000K, 80CRI, VISUAL COMFORT FORWARD OPTIC	1	3132	0.93	22.55	TYPE III, VERY SHORT, BUG RATING: B1 - U0 - G0
	VW	8	Lithonia Lighting	WDGE2 LED P1 40K 80CRI VW	WDGE2 LED WITH P1 - PERFORMANCE PACKAGE, 4000K, 80CRI, VISUAL COMFORT WIDE OPTIC	1	1289	0.93	9.81	TYPE III, VERY SHORT, BUG RATING: B0 - U0 - G0

Statistics						
Description	Symbol	Avg	Max	Min	Max/Min	Avg/Min
Calc Zone #1	+	0.6 fc	4.3 fc	0.0 fc	N/A	N/A

**NOTES:**  
 1. CALCULATION POINT WORK PLANE: GRADE LEVEL  
 2. FIXTURE MOUNTING HEIGHT: VARIES - REFER TO FIXTURE LABELS ON PLAN ABOVE.  
 3. CALCULATIONS PROVIDED ARE NOT A GUARANTEE OF PERFORMANCE. ACTUAL LIGHT LEVELS MAY VARY.\*\*

\*\* This document contains confidential and proprietary information of KSA Lighting & Controls. This document may only be used by or for the benefit of KSA Lighting & Controls representatives and customers. FOR LIGHTING DESIGNS This lighting design is not a professional engineering drawing and is provided for informational purposes only, without warranty as to accuracy, completeness, reliability or otherwise. KSA Lighting & Controls is not responsible for specifying the lighting or illumination requirements for any specific project, including municipal or building code requirements. It is the obligation of the end-user to consult with a professional engineering advisor to determine whether this lighting design meets the applicable project requirements for lighting system performance, safety, suitability and effectiveness for use in a particular application. Field verification is recommended when calculations are based on end-user or customer-provided information. End-user environment and application (including, but not limited to, voltage variation and dirt accumulation) can cause actual field performance to differ from the calculated photometric performance represented in this lighting design. In no event will KSA Lighting & Controls be responsible for any loss resulting from any use of this lighting design.



