



2nd Generation Restaurant Endcap

112 Lucille Dr
Lexington, Kentucky 40511

Property Highlights

- +/-3,200 SF second generation restaurant space for sublease
- Join Ramsey's Diner and Osaka in existing multi-tenant building
- Endcap location with outside patio area that can accommodate up to 24 seats
- Located at the main entrance to The Villages at Great Acres development surrounded by 127 new townhomes and 366 new apartments with beautiful green space
- Existing lease expires 3/1/2034
- Current co-tenancy includes Starbucks, Clark's Pump-N-Shop and UK Federal Credit Union
- The Villages at Great Acres will connect directly to Masterson Station neighborhood as well as the new Legacy Trail that connects with downtown

Available

| | |
|--------------|---------------|
| Suite 150: | +/-3,200 SF |
| Rental Rate: | Contact Agent |

For More Information

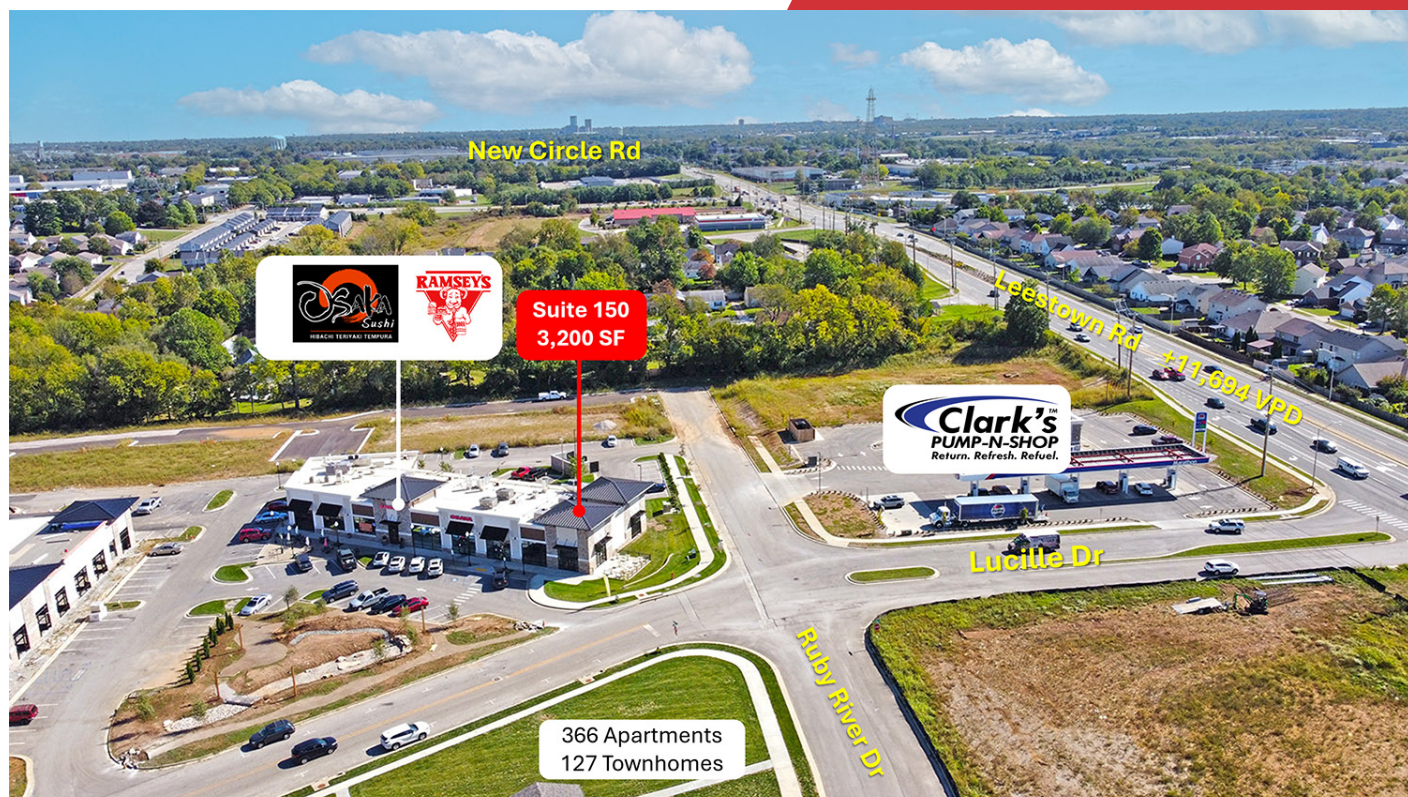
Zach Smith, CCIM

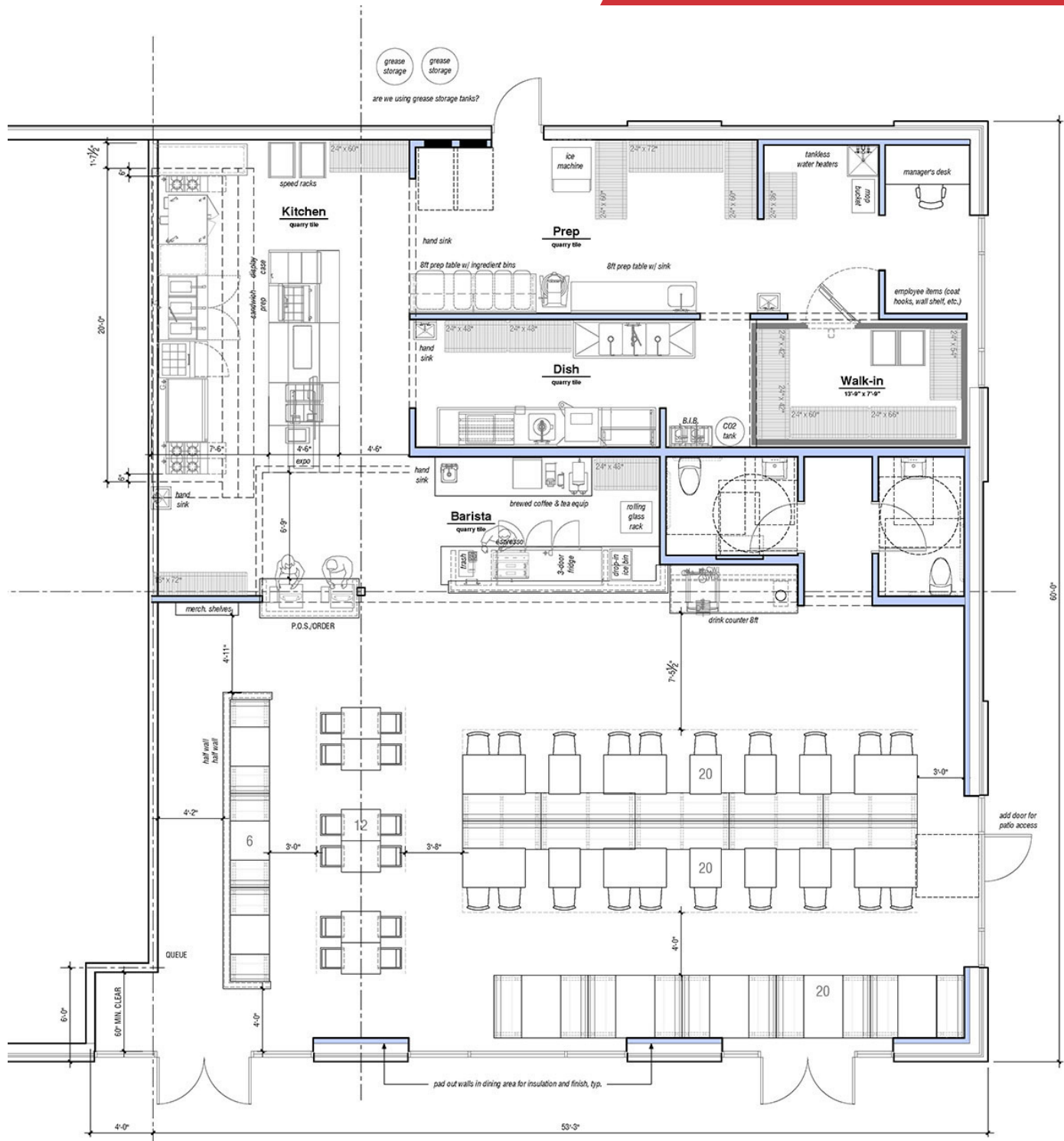
Senior Associate
O: 859 224 2000
zachsmith@naiisaac.com

Paul Ray Smith, Jr

Executive Vice President
O: 859 422 4401
prsmith@naiisaac.com

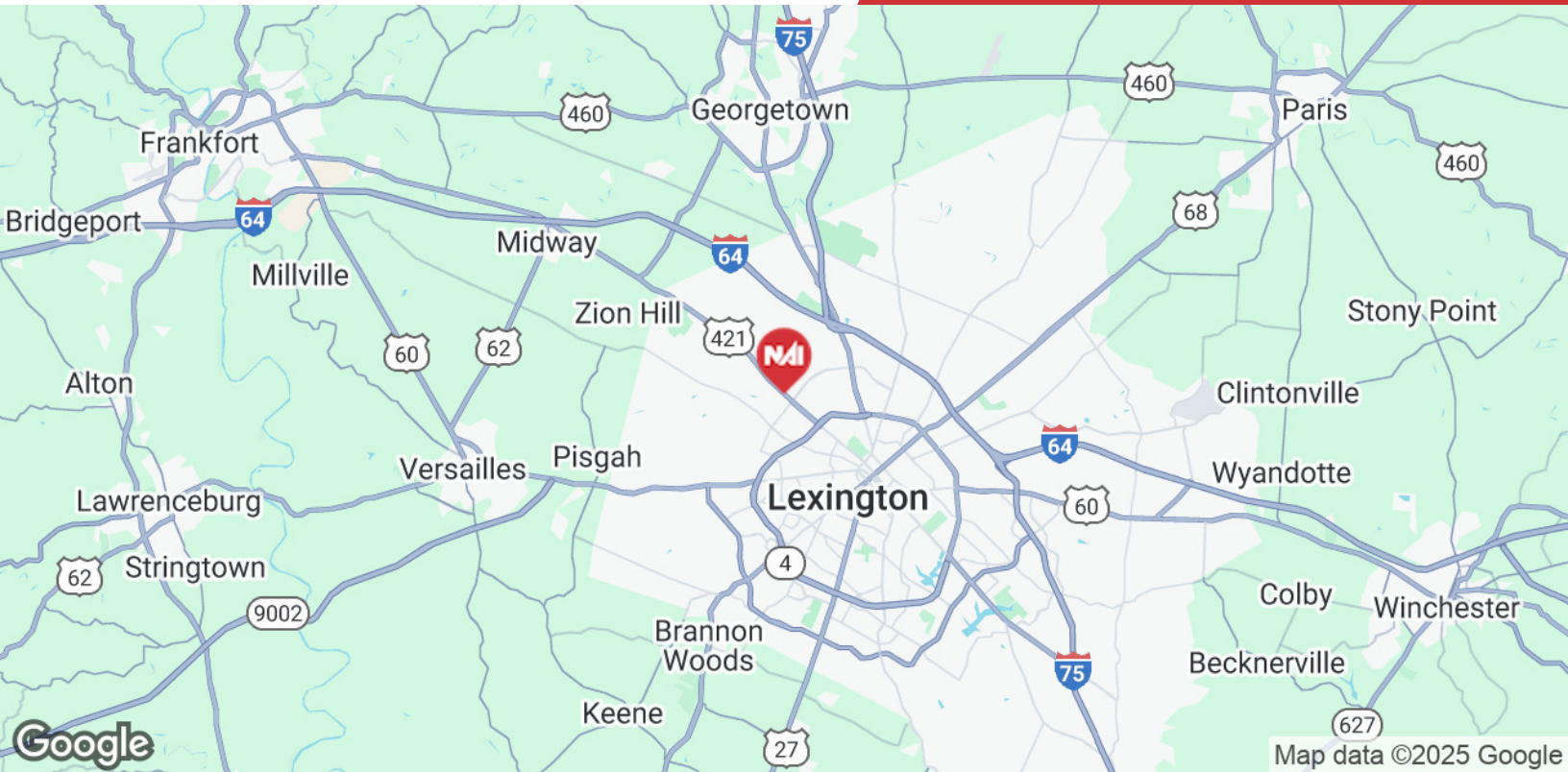


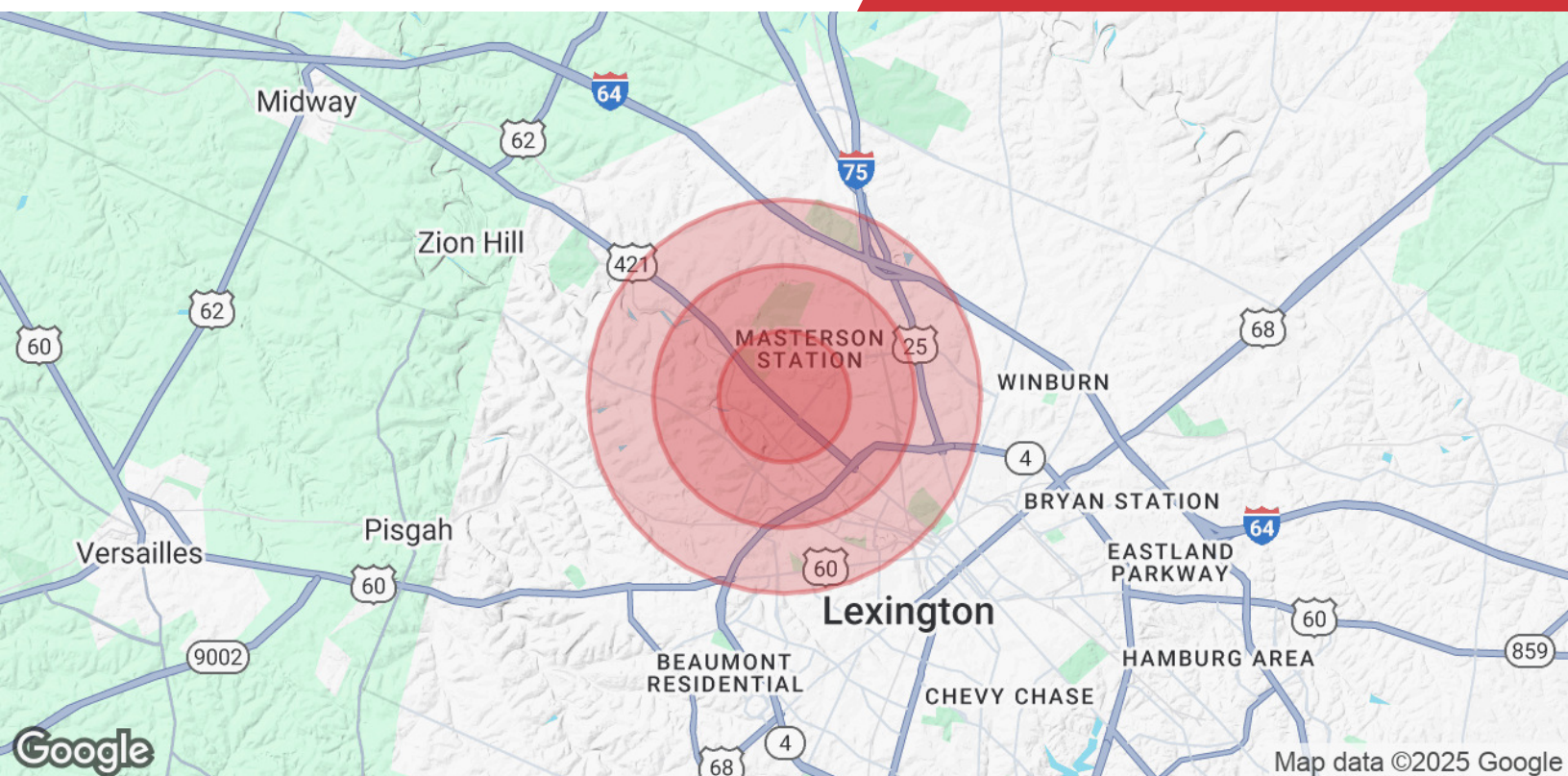




1 Layout - 78 indoor seats + patio TBD
A scale: 1/4" = 1'-0"







Population

| | 1 Mile | 2 Miles | 3 Miles |
|-----------------------------|--------|---------|---------|
| Total Population | 10,221 | 21,670 | 42,755 |
| Average Age | 36 | 36 | 37 |
| Average Age (Male) | 35 | 36 | 36 |
| Average Age (Female) | 37 | 37 | 38 |

Households & Income

| | 1 Mile | 2 Miles | 3 Miles |
|----------------------------|-----------|-----------|-----------|
| Total Households | 4,008 | 8,041 | 16,485 |
| # of Persons per HH | 2.7 | 2.8 | 2.6 |
| Average HH Income | \$99,466 | \$101,056 | \$89,288 |
| Average House Value | \$264,083 | \$331,027 | \$275,441 |

Demographics data derived from STDB 2025