

38,250 SF DISTRIBUTION BUILDING WITH COLD STORAGE COMPONENT

FOR LEASE

—
3,525 SF (0°) FREEZER
1,600 SF (40°) COOLER



7005 TUJUNGA AVE, NORTH HOLLYWOOD, CA 91605

DAVID YOUNG

C: 818 742 1651

dyoung@naicapital.com

Cal DRE Lic #00914504

CHAD GAHR, SIOR

C: 818 742 1626

cgahr@naicapital.com

Cal DRE Lic #01230414

NAI CAPITAL

15821 Ventura Blvd., Suite 320

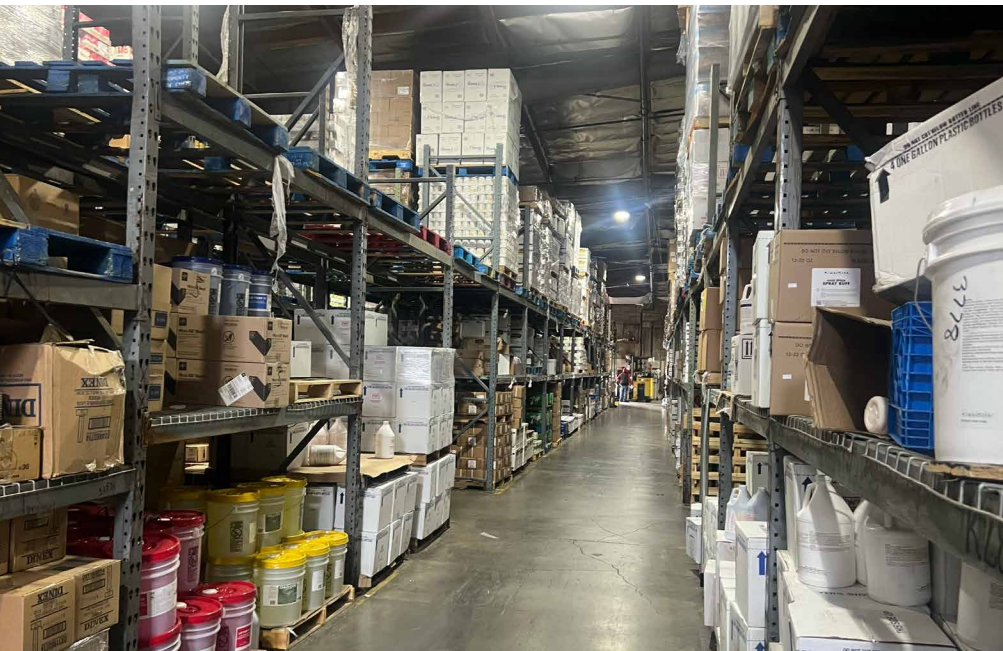
Encino, CA 91436

naicapital.com | 818 905 2400

NAI Capital
COMMERCIAL REAL ESTATE SERVICES, WORLDWIDE

DISTRIBUTION BUILDING WITH COLD STORAGE COMPONENT

FOR LEASE
38,250 SF



PROPERTY FEATURES

Building Size:	38,250 SF
Lease Rate:	\$1.30 / SF NNN
NNN Expenses:	\$0.24 / SF
Lease Term:	5 – 10 Years

Freezer Size:	3,525 SF
Freezer Temperature:	0 degrees F
Cooler Size:	1,600 SF
Cooler Temperature:	40 degrees F

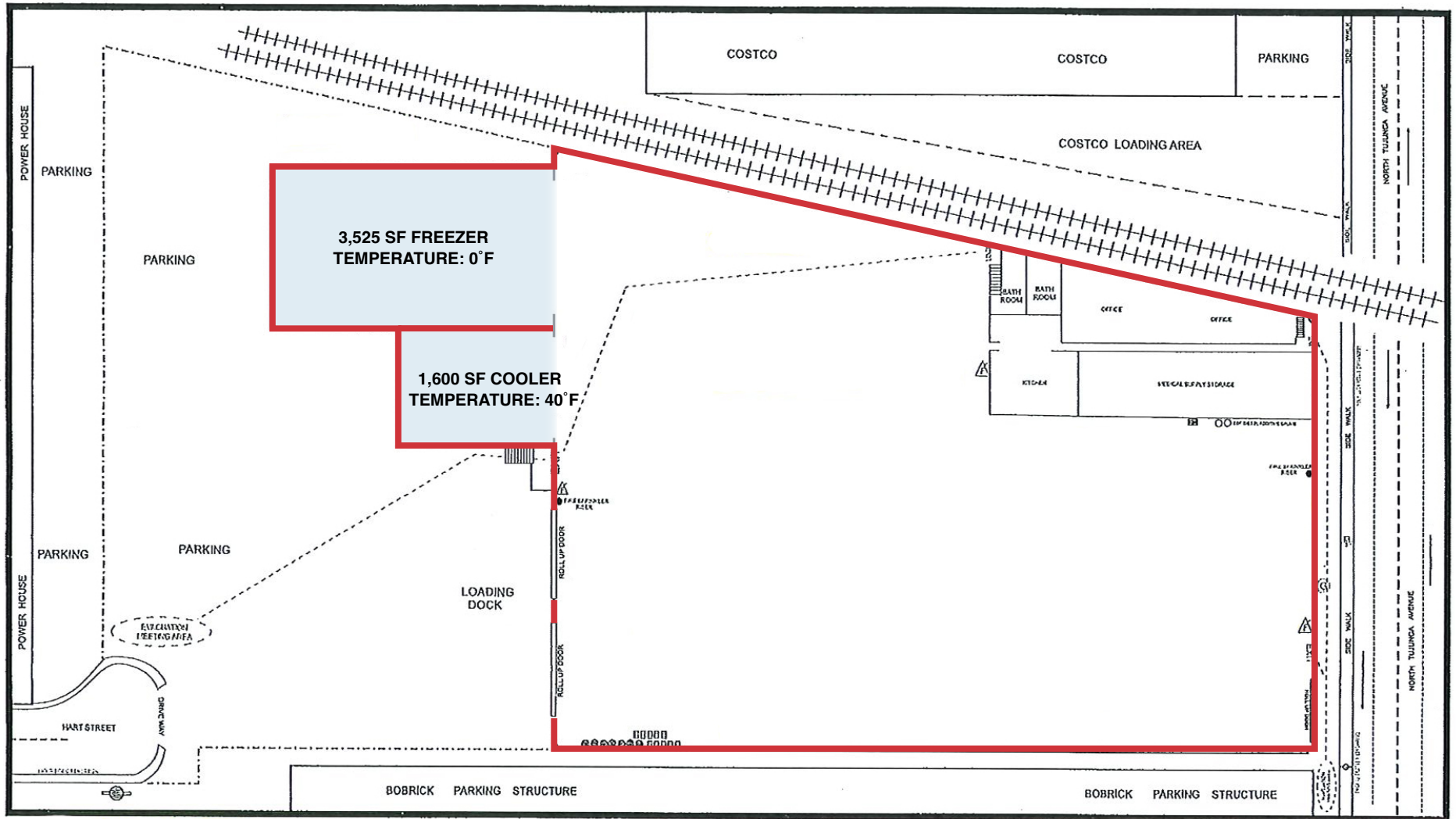
Office Area:	4,800 SF
Clearance Height:	18'-27'
Dock High Loading:	(4) 12' x 16'
Ground Level Loading:	(1) x 10' x 14'
Power:	600 Amps of 120/240 Volt; 3 Phase, 3 Wire
Fire Sprinklers:	General Hazard
Parcel Size:	44,148 SF
Parking:	22 stalls / (0.60 / 1,000)
Zoning:	LAM2
Year Built:	1975

Location: Prime North Hollywood location with immediate access to Interstate 5 and the 170 Freeway. Adjacent to the Hollywood Burbank Airport.

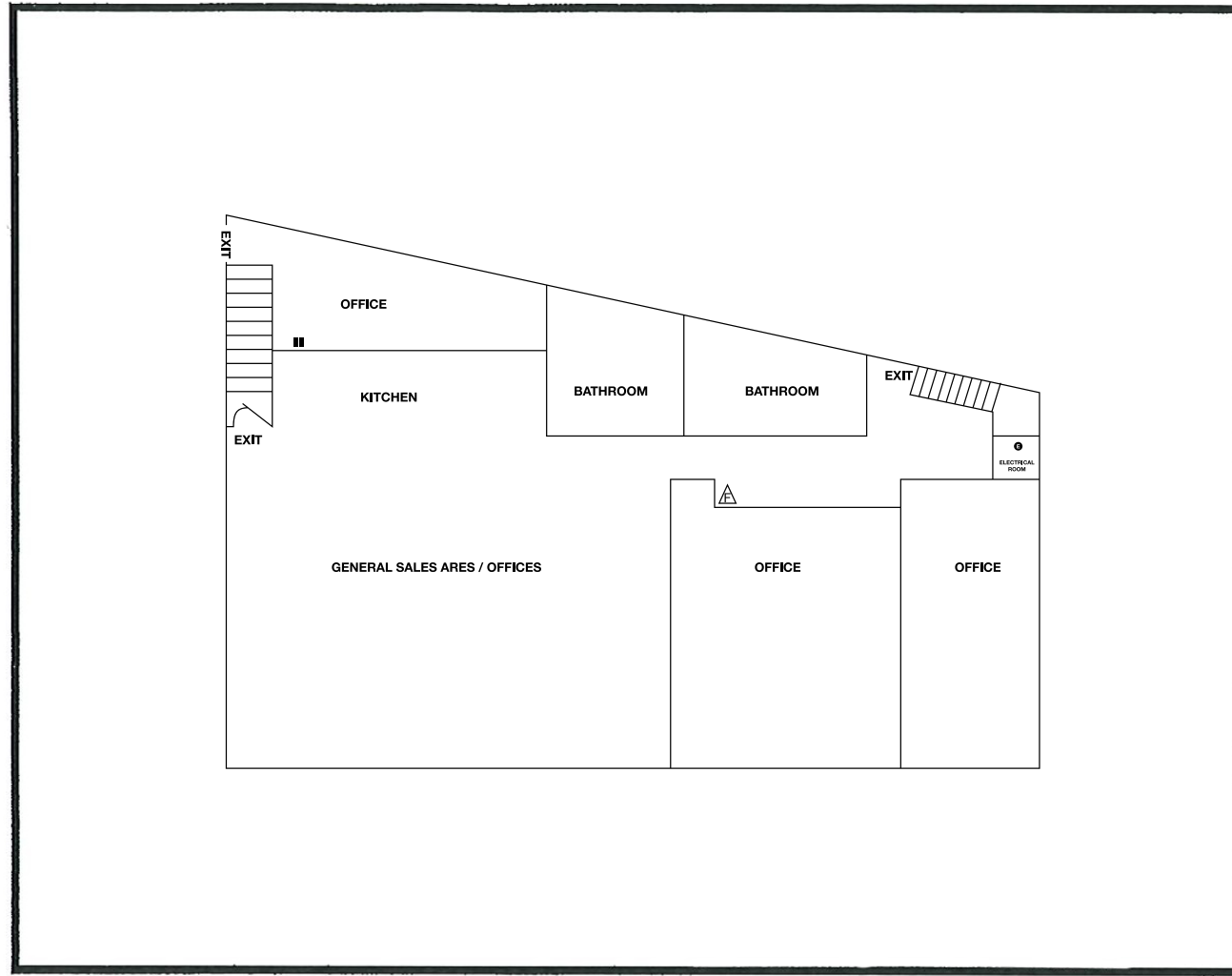
DISTRIBUTION BUILDING WITH COLD STORAGE COMPONENT

FOR LEASE
38,250 SF

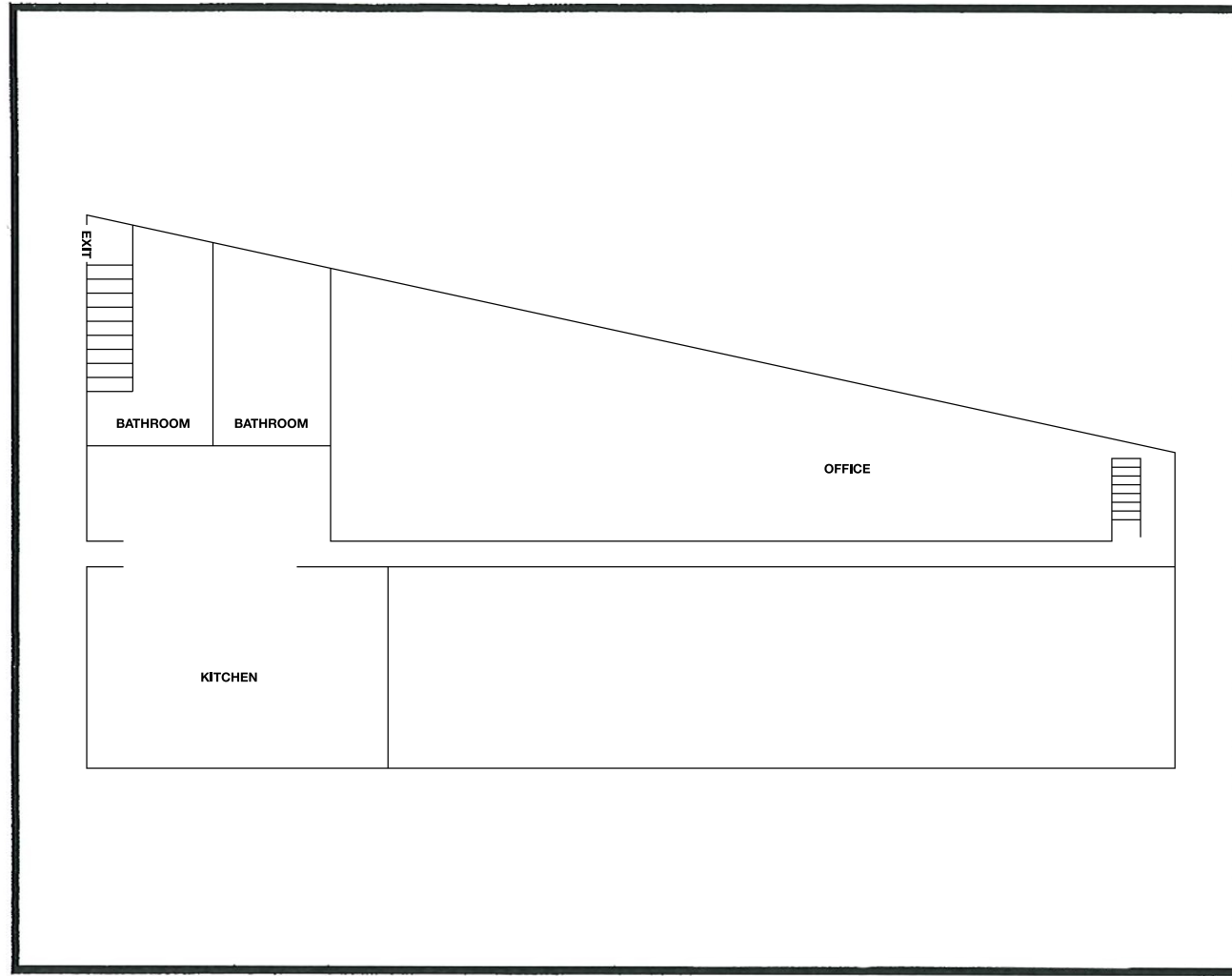
SITE PLAN



MEZZANINE OFFICE LAYOUT (2,400 SF)



GROUND FLOOR OFFICE LAYOUT (2,400 SF)



3,525 SF (0°) FREEZER

FOR LEASE
38,250 SF



1,600 SF (40°) COOLER

FOR LEASE
38,250 SF



1,600 SF (40°) COOLER

FOR LEASE
38,250 SF





DISTRIBUTION BUILDING WITH COLD STORAGE COMPONENT

FOR LEASE
38,250 SF



38,250 SF DISTRIBUTION BUILDING WITH COLD STORAGE COMPONENT

FOR LEASE

—
3,525 SF (0°) FREEZER
1,600 SF (40°) COOLER

7005 TUJUNGA AVE, NORTH HOLLYWOOD, CA 91605

DAVID YOUNG

C: 818 742 1651

dyoung@naicapital.com

Cal DRE Lic #00914504

CHAD GAHR, SIOR

C: 818 742 1626

cgahr@naicapital.com

Cal DRE Lic #01230414

NAI CAPITAL

15821 Ventura Blvd., Suite 320

Encino, CA 91436

naicapital.com | 818 905 2400

No warranty, express or implied, is made as to the accuracy of the information contained herein. This information is submitted subject to errors, omissions, change of price, rental or other conditions, withdrawal without notice, and is subject to any special listing conditions imposed by our principals. Cooperating brokers, buyers, tenants and other parties who receive this document should not rely on it, but should use it as a starting point of analysis, and should independently confirm the accuracy of the information contained herein through a due diligence review of the books, records, files and documents that constitute reliable sources of the information described herein. NAI Capital Cal DRE Lic #02130474

NAI Capital
COMMERCIAL REAL ESTATE SERVICES, WORLDWIDE