



# For Lease

410 Meadow Creek Drive,  
Westminster, MD

## Storefront Medical/Retail/Office space available

### The Medical Office Space at Meadow Creek

- Existing Medical office layout 2,209 s.f. - 5,900 s.f. available

### The Shoppes at Meadow Creek

- Retail-1,700 s.f to 2,900 s.f available
- Located on 15 acres at the intersection of MD routes 140, 31 and 97
- In the geographic center of both the Town of Westminster and Carroll County, MD

**Mike Kauffman**

+1 410 910 7361

[mike.kauffman@jll.com](mailto:mike.kauffman@jll.com)

**Rob Freedman**

+1 443 952 9444

[rob.freedman@jll.com](mailto:rob.freedman@jll.com)



# Demographics

	1 mi	3 mi	5 mi
<b>Population</b>	8,421	30,759	42,437
<b>Average HH Income</b>	\$99,970	\$93,743	\$99,074
<b>Households</b>	2,691	11,651	15,780
<b>Employees</b>	2,331	24,720	28,242
<b>Businesses</b>	173	1,798	2,064

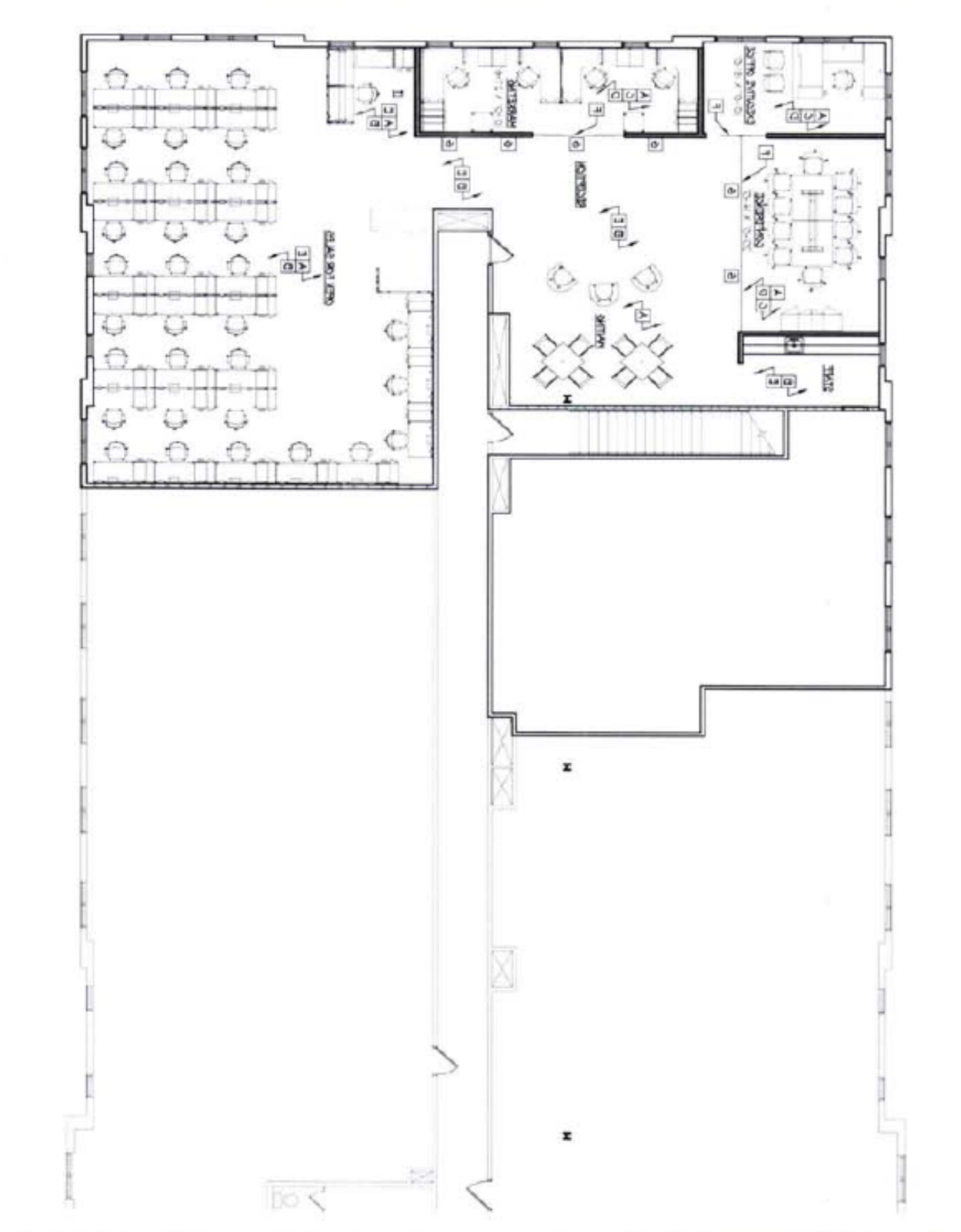


VEHICLES  
PER DAY

**Wmc Dr**  
6,802

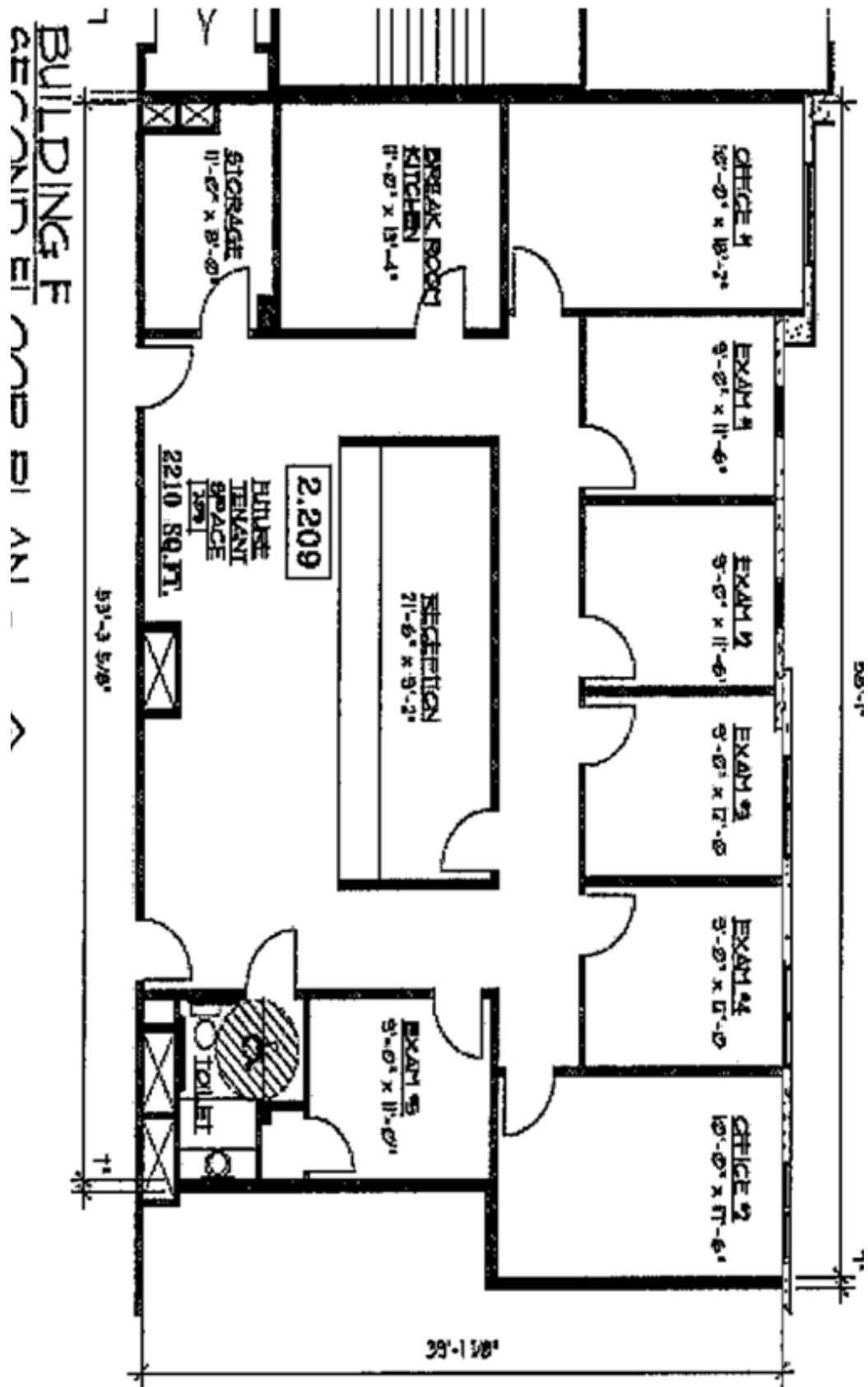
**New Windsor Rd**  
12,820

2nd Floor Plan Office Space: 5900 sf

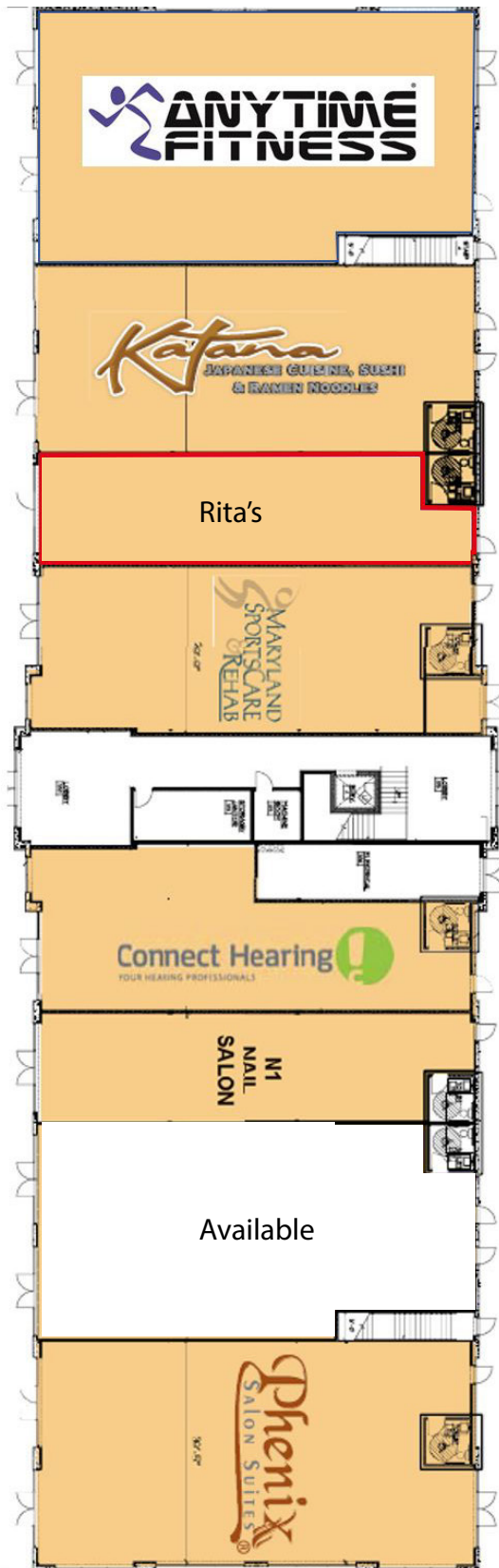




2nd Floor Plan 2,209 sf



# The space



410 Meadow Creek Drive  
Westminster, MD

# 410 Meadow Creek Drive

The Shoppes at Meadow Creek

For more information,  
please contact:

---

**Mike Kauffman**

+1 410 910 7361

[mike.kauffman@jll.com](mailto:mike.kauffman@jll.com)

**Rob Freedman**

+1 443 952 9444

[rob.freedman@jll.com](mailto:rob.freedman@jll.com)

