

An aerial photograph of Cleveland, Ohio, showing a mix of urban development. In the foreground, there's a parking lot with a few cars and a light blue building with 'ING'S CENTER | WEST BANK' and 'K&C' signage. A road curves through the middle ground, flanked by brick buildings and greenery. In the background, the Cleveland skyline is visible under a clear blue sky, featuring prominent skyscrapers like the PNC Tower and the Terminal Tower. A bridge is visible on the left side of the image.

FOR SALE

OWN THIS VIEW.



DEVELOPMENT OPPORTUNITY IN CLEVELAND FLATS

2206 Superior Viaduct, Cleveland, OH 44113

CONTACT:

David Mrachko

DavidMrachko@HannaCRE.com

216.214.1197

DEVELOPMENT OPPORTUNITY IN CLEVELAND FLATS

PROPERTY OVERVIEW

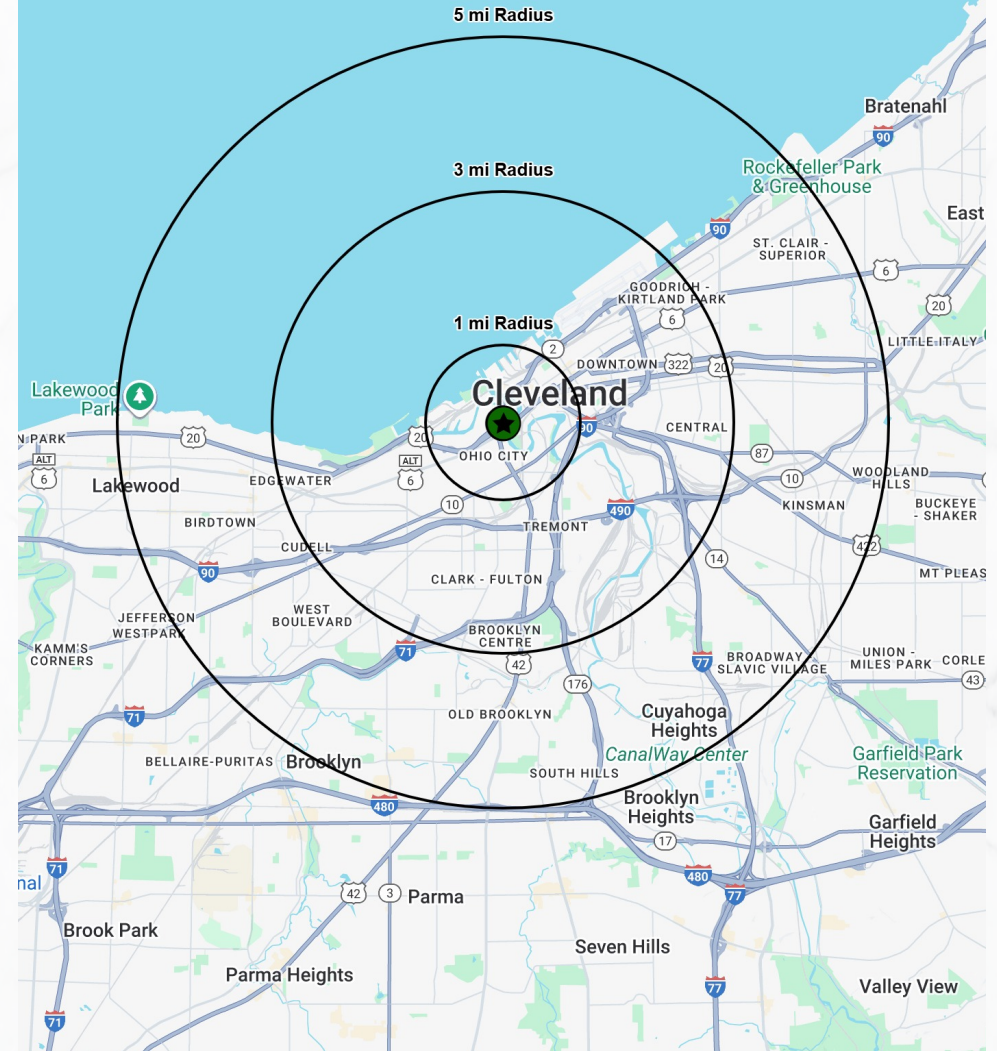
2206 Superior Viaduct, Cleveland, OH 44113

PROPERTY SUMMARY

- One-of-a-kind redevelopment opportunity in the hot Flats West Bank
- Frontage on Superior Viaduct and Washington Avenue
- Site is part of the "Hubbard Cooke Block" designated historic district
- Prime candidate for historic tax credits for an owner/user or investor
- Unique 22,500 SF building offers amazing city views

DEMOGRAPHICS	1-MILE	3-MILE	5-MILE
POPULATION	17,597	104,179	260,109
HOUSEHOLDS	10,037	49,108	121,552
AVERAGE HH INCOME	\$77,615	\$76,942	\$71,531
MEDIAN HH INCOME	\$77,615	\$52,227	\$50,926
DAYTIME POPULATION	38,627	142,820	267,910

CLICK HERE FOR
GOOGLE MAPS VIEW

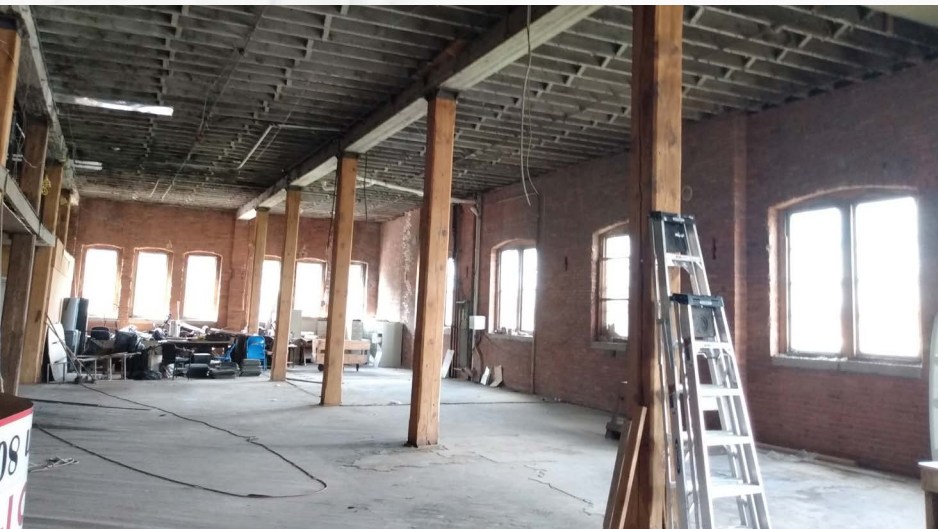


DEVELOPMENT OPPORTUNITY IN CLEVELAND FLATS

2206 Superior Viaduct, Cleveland, OH 44113

PHOTOS

OWN THIS VIEW.



DEVELOPMENT OPPORTUNITY IN CLEVELAND FLATS

2206 Superior Viaduct, Cleveland, OH 44113

MICRO AERIAL



2206 Superior Viaduct, Cleveland, OH 44113

