

Warehouse/Flex Space For Lease

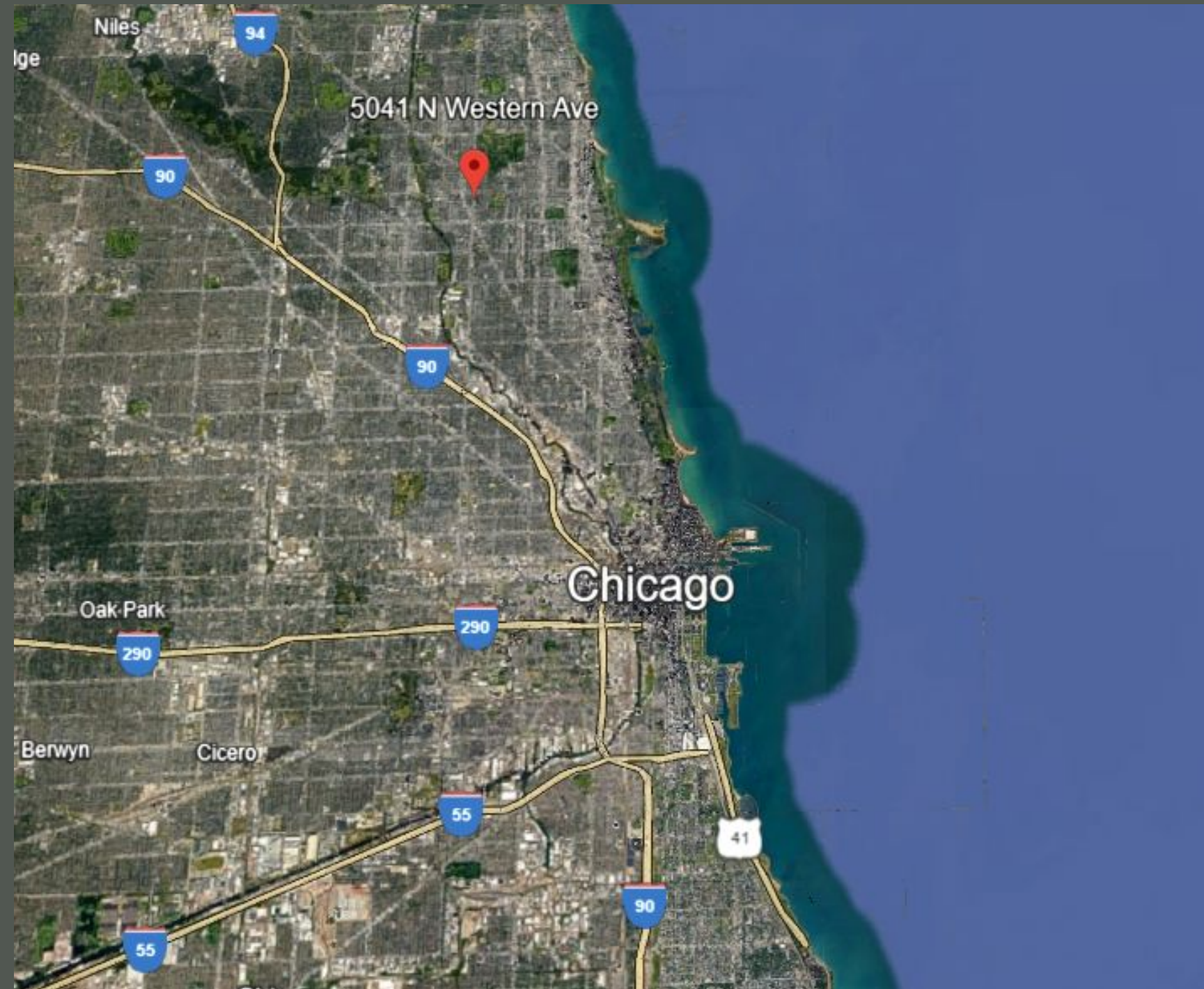
847.409.4900

coordinate
properties

5041-5047 N Western Ave. Chicago, IL



info@coordinateproperties.com

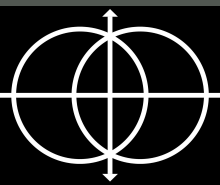


- B3-2 Zoning
- 44,000 Sq Ft
- Square footage spams between basement, first floor, and second floor
- Prime Western Ave. location with ample foot and vehicle traffic daily
- Situated between desirable Lincoln Square/ Ravenswood areas

847.409.4900

5041-5047 N Western Ave, Chicago, IL

info@coordinateproperties.com



Notable Neighbors

WesternUnion // WU

tropical CAFE
SMOOTHIE



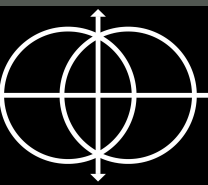
Walgreens



847.409.4900

5041-5047 N Western Ave, Chicago, IL

info@coordinateproperties.com



01.

Exterior

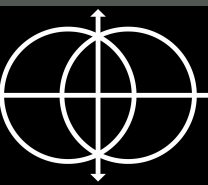
- Adjacent parking lot that fits 16 vehicles
- Six external loading docks
- Potential for retail street-side exposure if desired



847.409.4900

5041-5047 N Western Ave, Chicago, IL

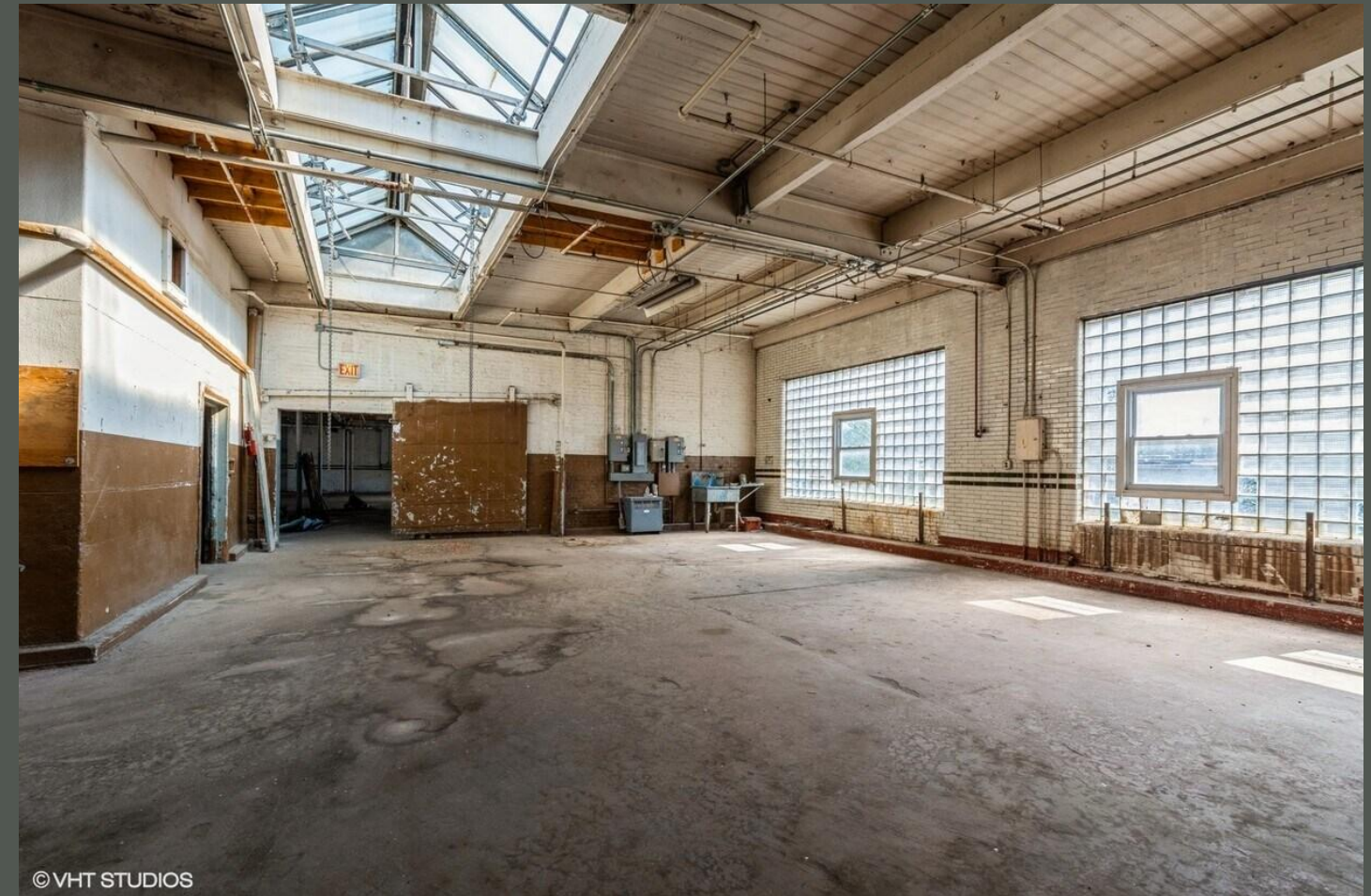
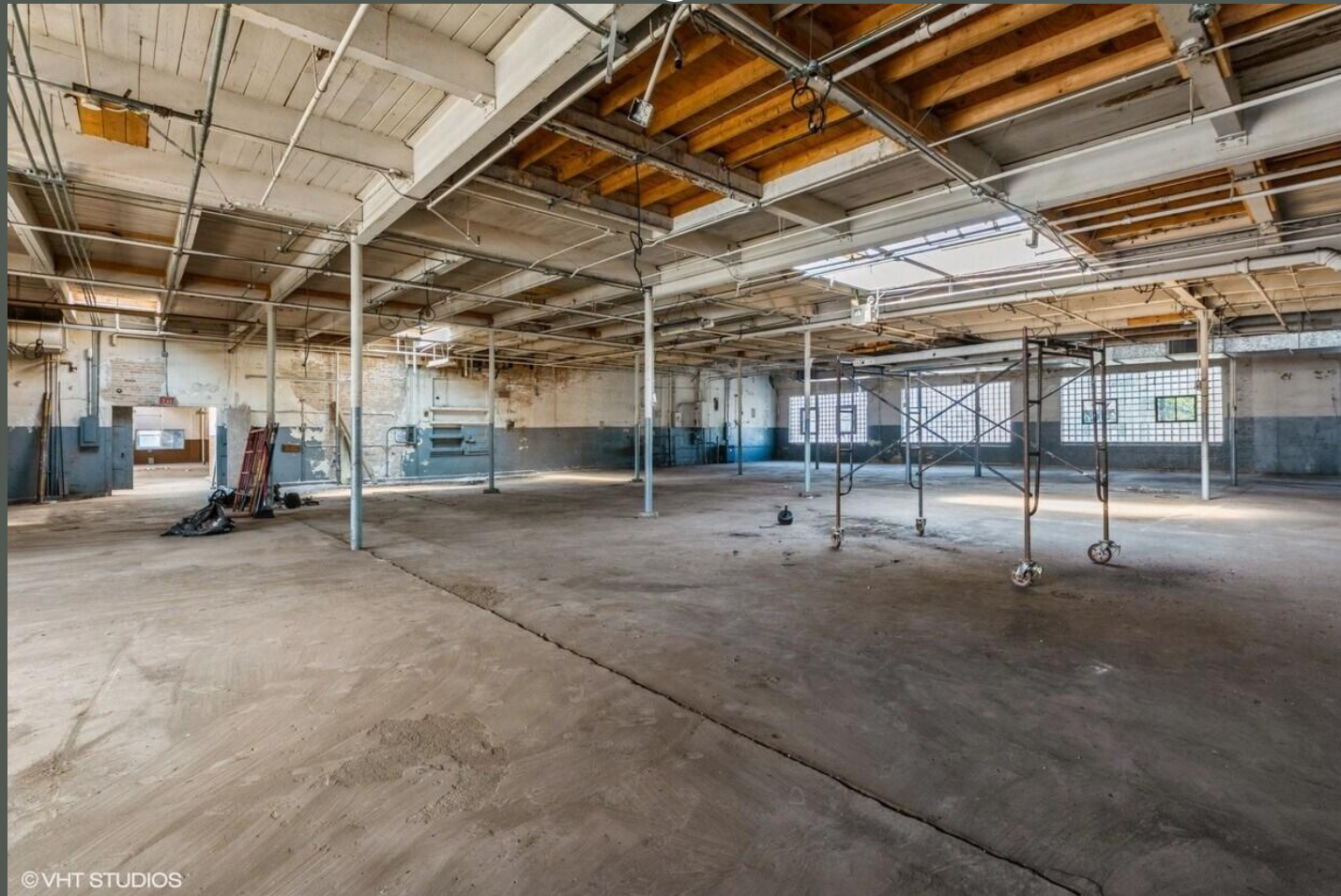
info@coordinateproperties.com



02.

Warehouse

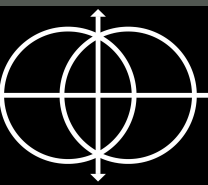
- Open and spacious layout for a plethora of needs
- Skylights and large windows flood space with natural light



847.409.4900

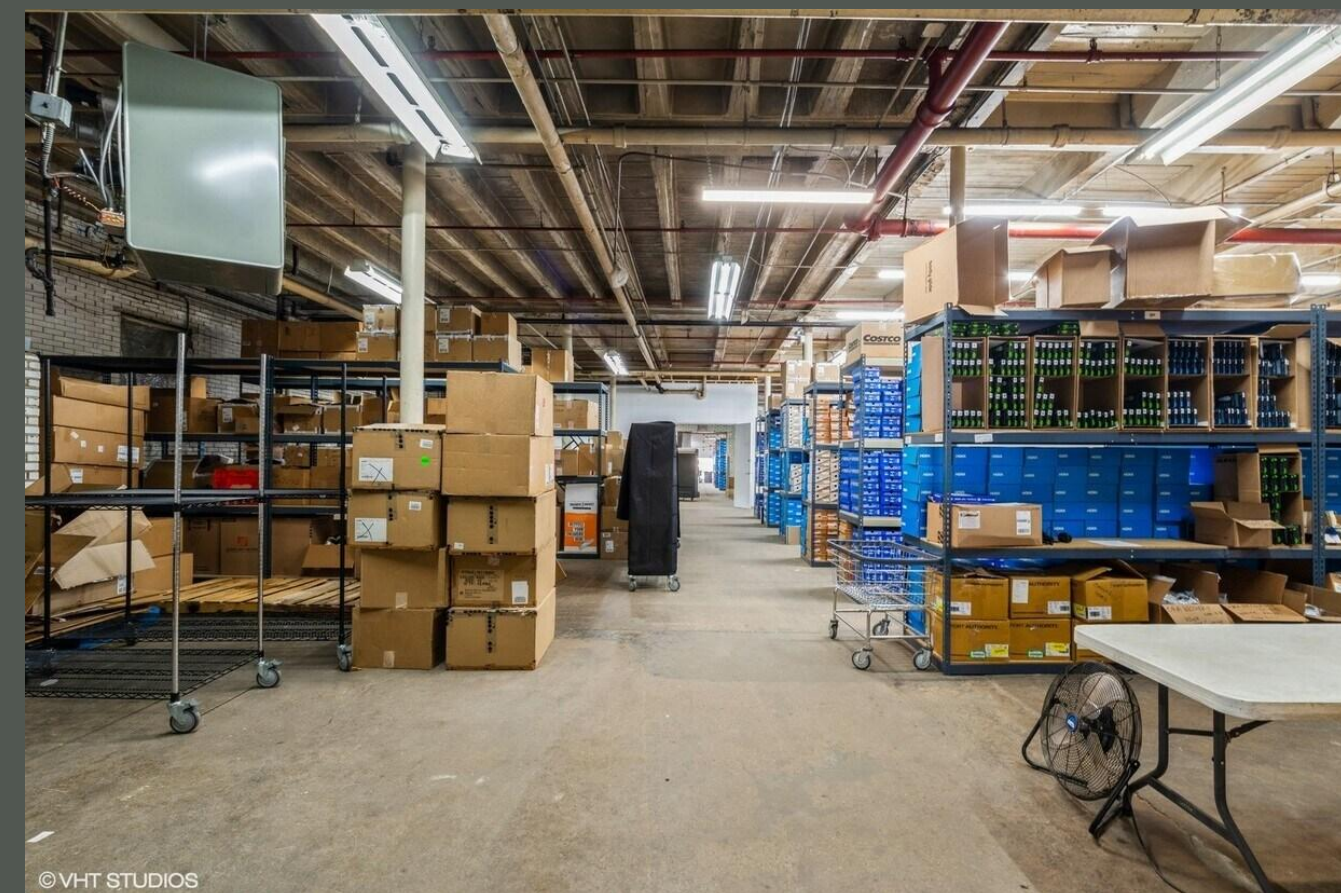
5041-5047 N Western Ave, Chicago, IL

info@coordinateproperties.com



03.

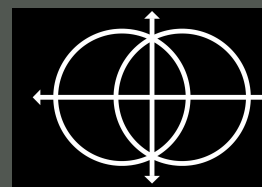
Storage



847.409.4900

5041-5047 N Western Ave, Chicago, IL

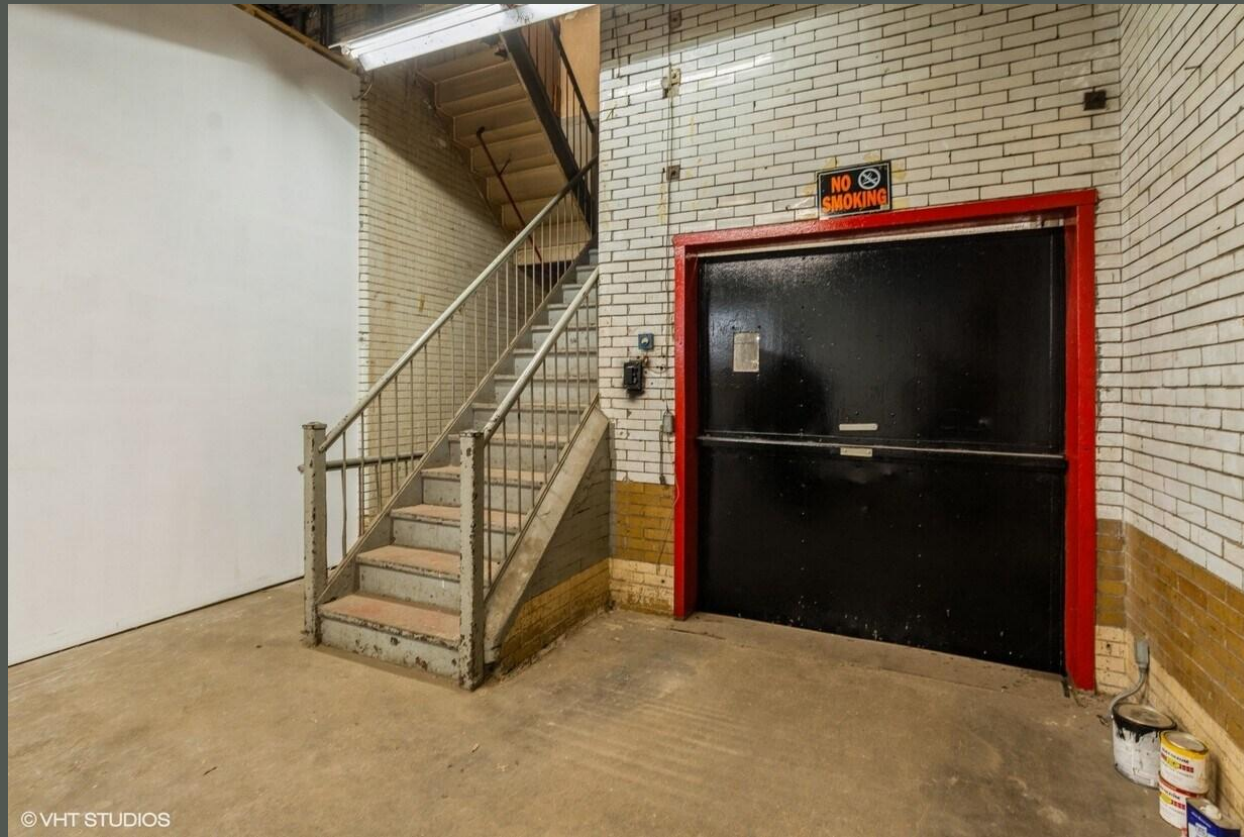
info@coordinateproperties.com



04.

Accessibility

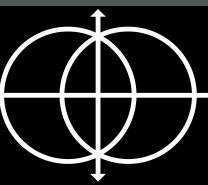
- Highly functional for loading and unloading
- Three Drive-in loading docks
- Freight elevator between all three floors



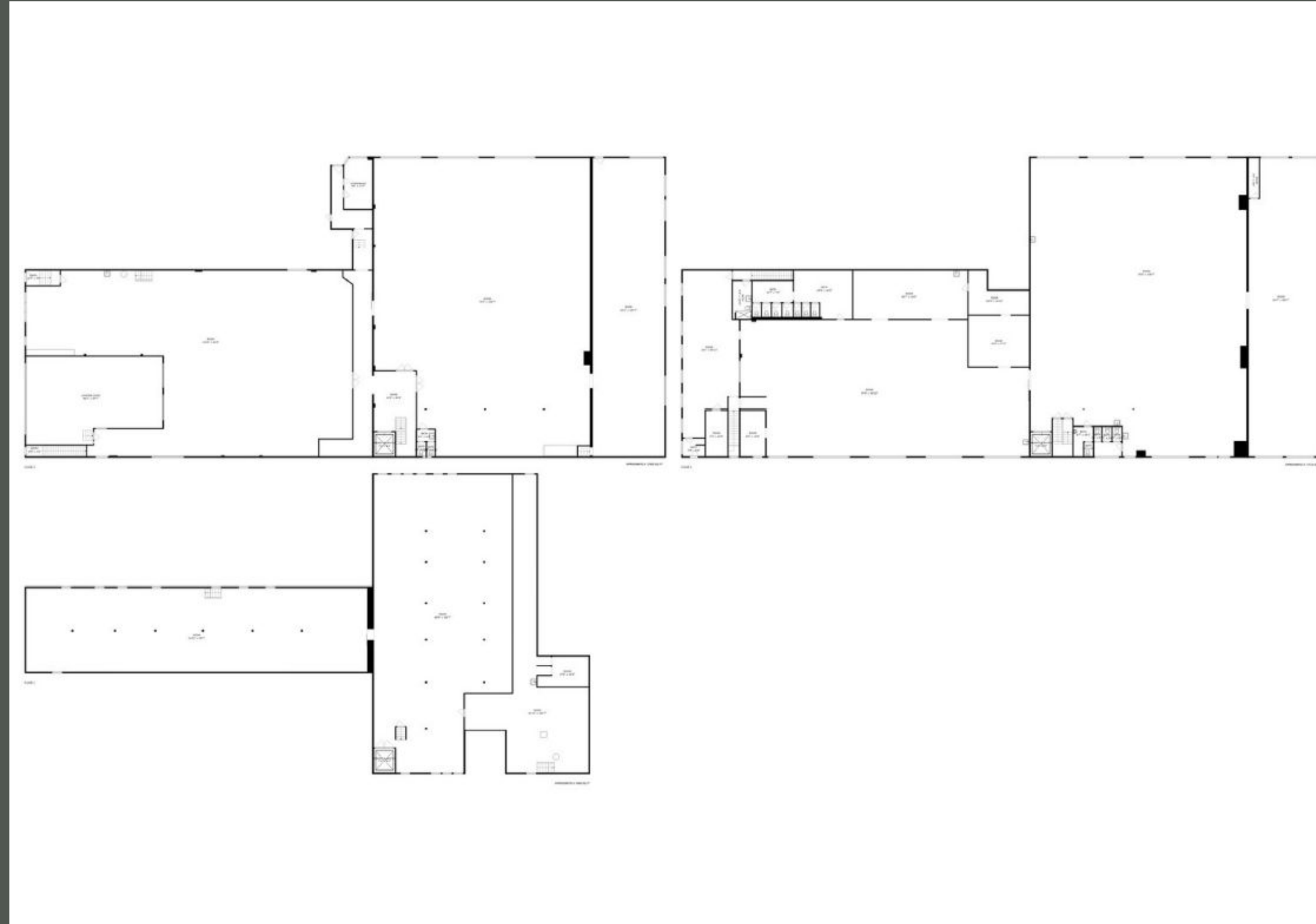
847.409.4900

5041-5047 N Western Ave, Chicago, IL

info@coordinateproperties.com



Floor Plan



847.409.4900

5041-5047 N Western Ave, Chicago, IL

info@coordinateproperties.com

Coordinate Properties

“GET ON THE GRID”



Who we are?

We are a commercial real estate brokerage based in Chicago holding a deep understanding of trends within the local market, embracing growth at every step.



What we do?

Uphold a dedication to client service and market expertise for all real estate needs.



Amanda Stamelos

Managing Broker

amanda@coordinateproperties.com

847.409.4900

2715 N Central Ave, Chicago, IL

info@coordinateproperties.com
