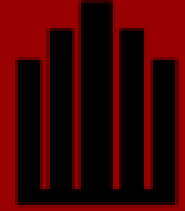


301 S Warson Rd · St. Louis MO, 63124

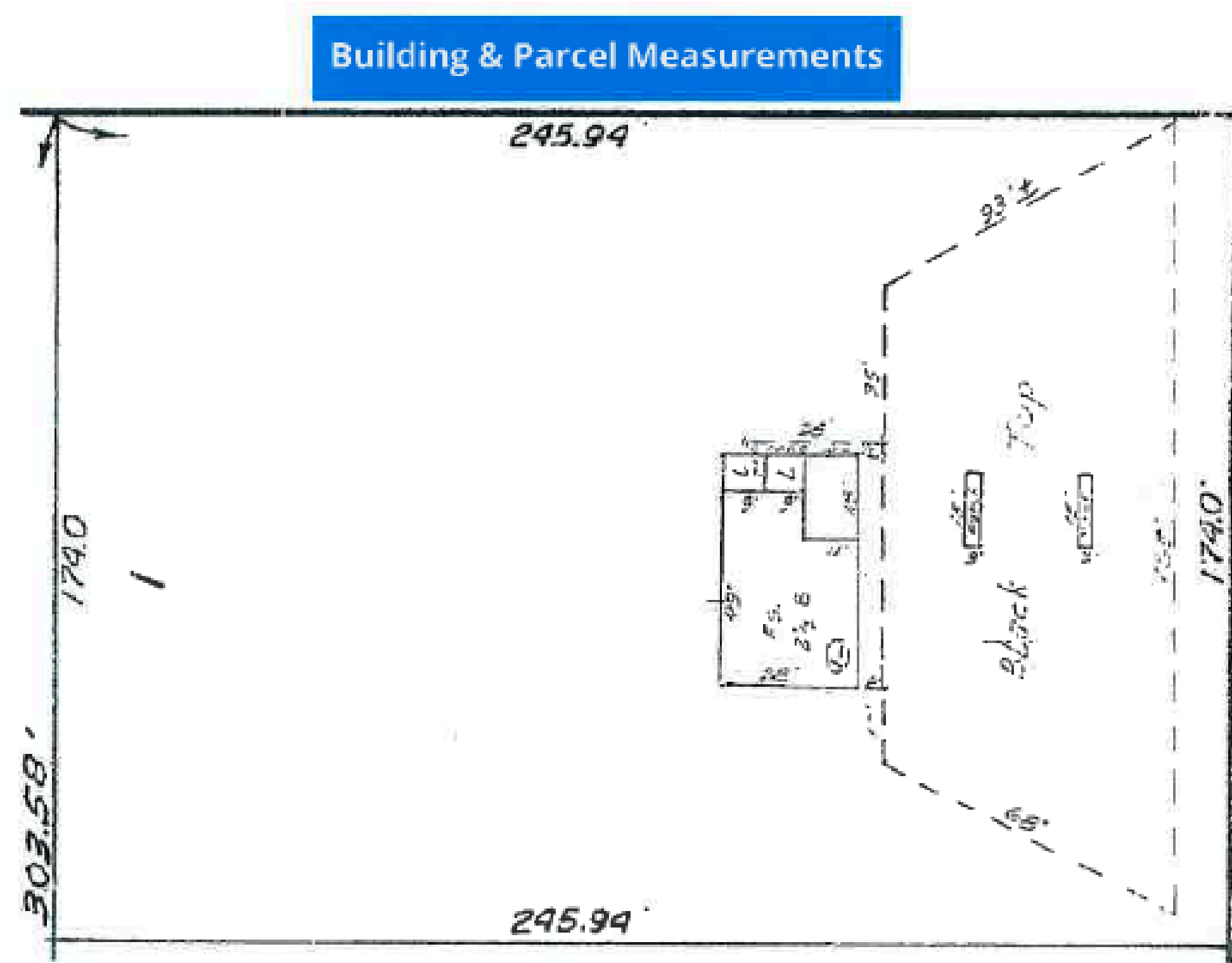
SALE: \$550,000.00

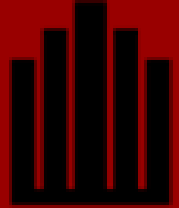




PROPERTY FEATURES

- Currently zoned R in the city of Ladue
- Previously a 2-bay service station of 1,400 SF
- Lot size 0.98 acres/42,793 SF
- RE taxes 2025 approx. \$12,000.00
- Tanks have been removed and Department of Natural Resources NFA letter to be issued mid-2026





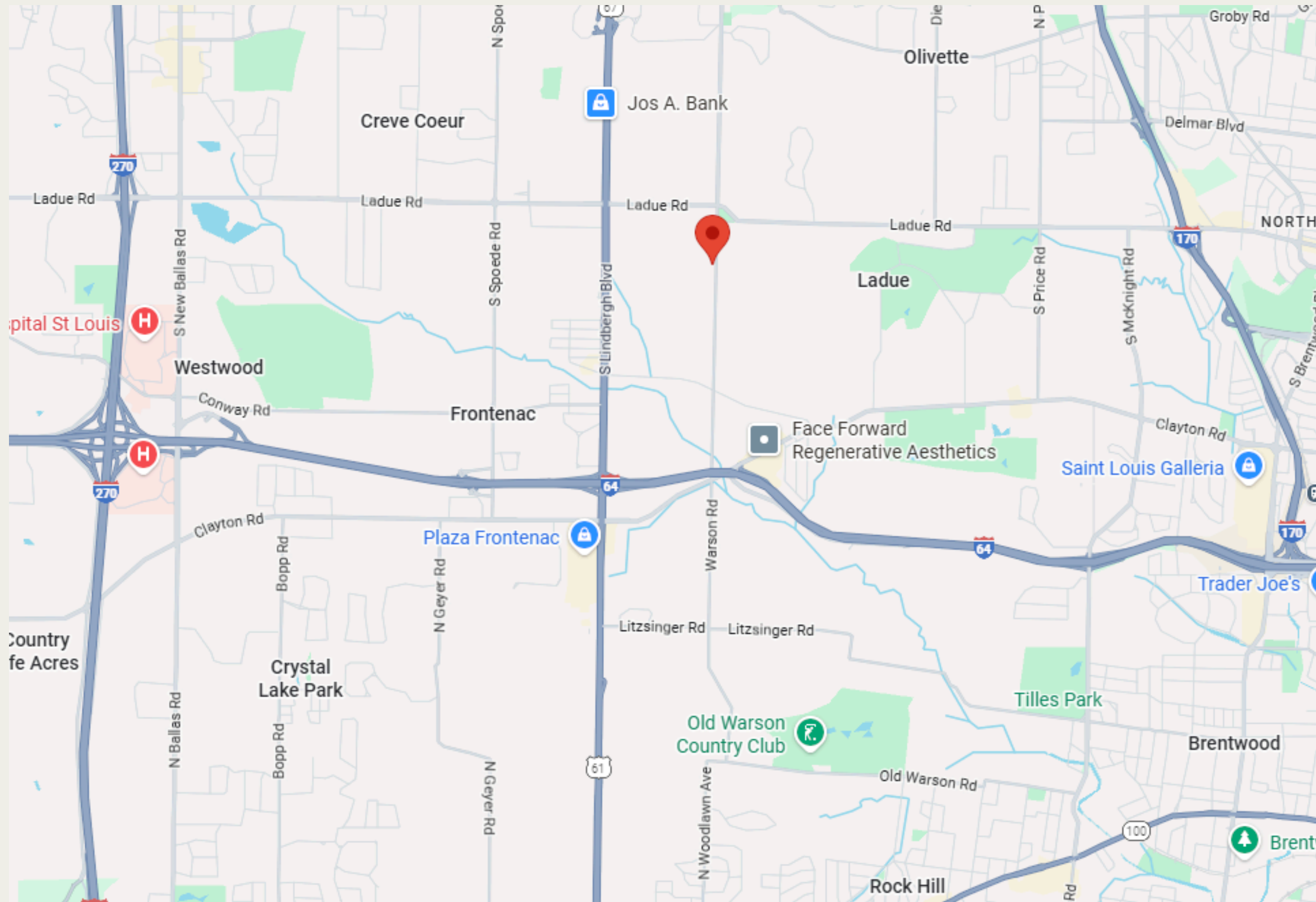
301 S Warson Rd · St. Louis MO, 63124





301 S Warson Rd · St. Louis MO, 63124

LOCATION



Steve Bahn

Office: 314.849.5858

Cell: 314.503.7601

Steve@bahnrealty.com

