



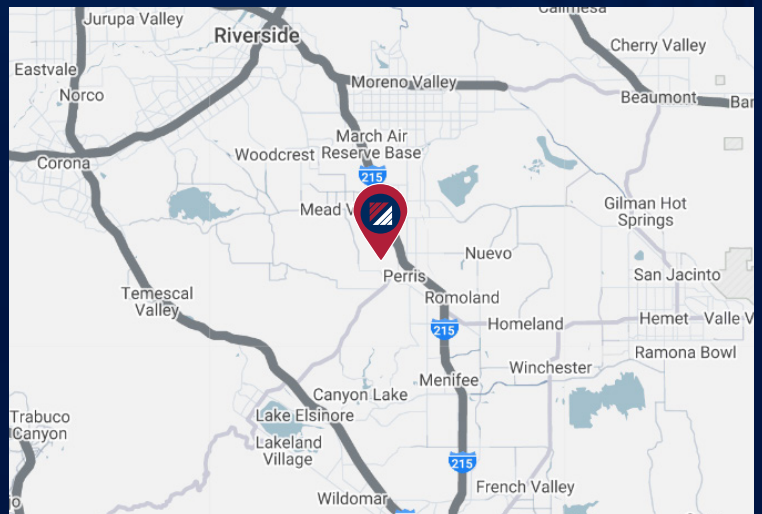
FOR LEASE ±14,807 SF

14000 MERIDIAN PARKWAY BLDG. 7

RIVERSIDE | CA, 92508

PROPERTY HIGHLIGHTS

- AVAILABLE: ±14,807 SF
- OFFICE SF: ±1,500
- WAREHOUSE SF: ±13,307 (est.)
- POWER: 400 Amps, 277/480 V (Expandable) (Verify)
- GL/DH: 1/2
- CLEAR HEIGHT: 20'
- SITE: Full Concrete Lot
- PARKING: 19 Surface Spaces
Ratio: 1.3/1,000 SF



FOR MORE INFORMATION, PLEASE CONTACT:

NOAH SAMARIN

EVP | PRINCIPAL
P: 909.912.0007 | M: 714.812.1289
noah.samarin@daumcommercial.com
CADRE #01755814

DAVID GORES

VICE PRESIDENT
P: 909.652.9059 | M: 909.720.9437
dgores@daumcommercial.com
CADRE #01502471

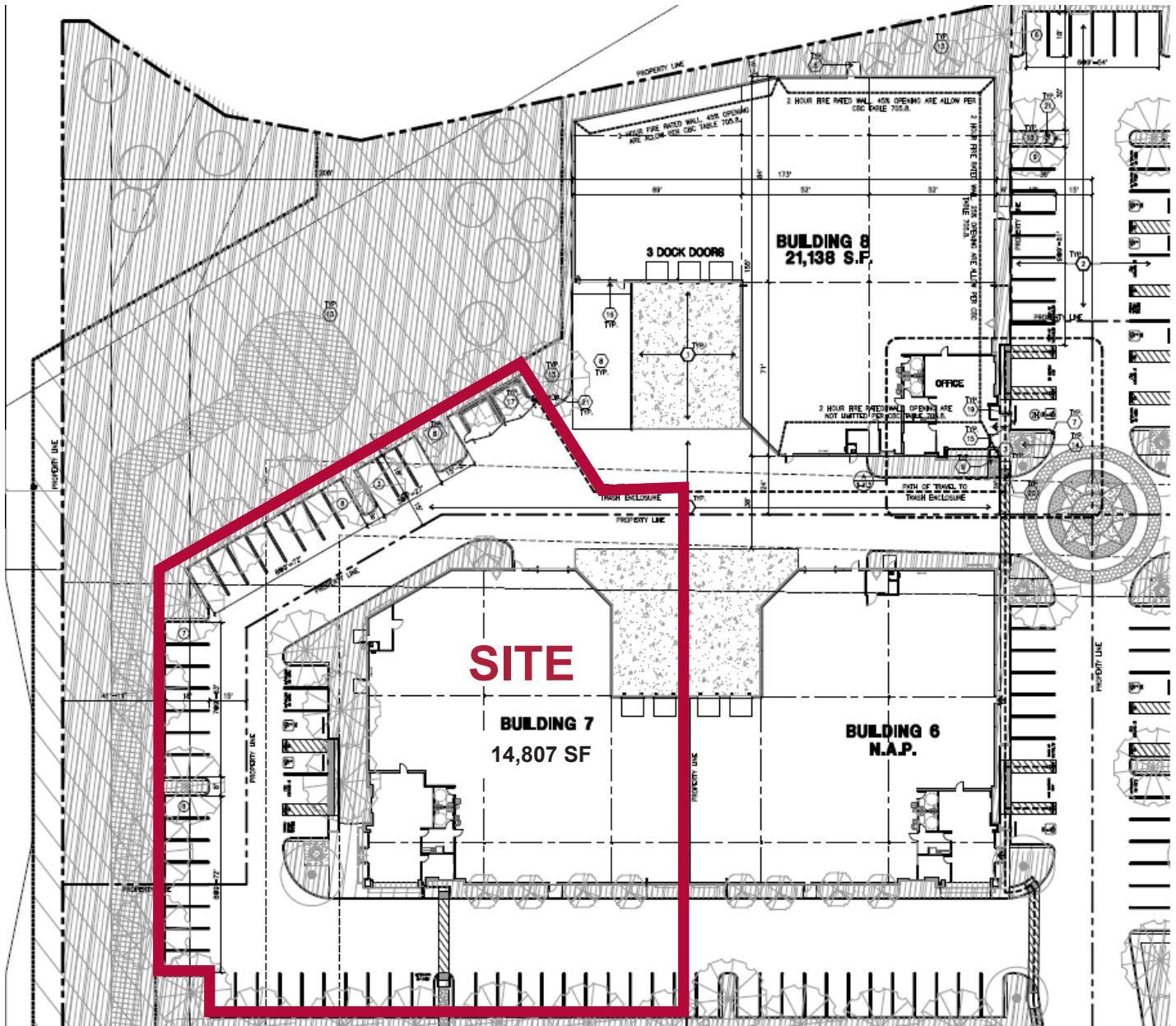
NICK CANTU

ASSOCIATE V.P.
P: 909.652.90540 | M: 714.787.9454
ncantu@daumcommercial.com
CADRE #02016719



FOR LEASE ±14,807 SF

14000 MERIDIAN PARKWAY BLDG. 7
RIVERSIDE | CA, 92508



- ±1.06 acre site
- Highly visible along E. Alessandro & Meridian Parkway
- 2 dock high loading & 1 ground level loading doors
- 19 surface spaces available, ratio 1.3/1,000 SF
- Occupancy Feb./March 2025

FOR MORE INFORMATION, PLEASE CONTACT:

NOAH SAMARIN

EVP | PRINCIPAL
P: 909.912.0007 | M: 714.812.1289
noah.samarin@daumcommercial.com
CADRE #01755814

DAVID GORES

VICE PRESIDENT
P: 909.652.9059 | M: 909.720.9437
dgores@daumcommercial.com
CADRE #01502471

NICK CANTU

ASSOCIATE V.P.
P: 909.652.90540 | M: 714.787.9454
ncantu@daumcommercial.com
CADRE #02016719

