

GRANITE POINT

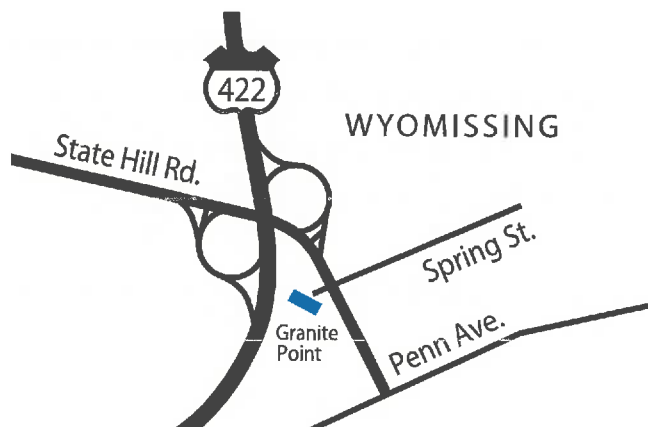
CLASS A MEDICAL OFFICE SPACE



Available Now! Conveniently located at the intersection of State Hill Road and Rt. 422 adjacent to the Berkshire Mall in Wyomissing, PA

Fellow Tentants:

Eye Consultants of Pennsylvania, PC
Lor-Ron Optical
Pennsylvania Eye & Ear Surgery Center
Berks ENT Surgical Associates



At a Glance:

- Class A Medical/Office Space
- Top Floor with Views of Wyomissing
- Up to 9800 sq. ft. (contiguous) available:
Also Divisible into 5,011; 3,800; 2,477 and 2,534 sq. ft. Units
- Custom Fitout Available
- Ample Parking
- 24/7/365 Access

For leasing information, contact

David O'Donnell

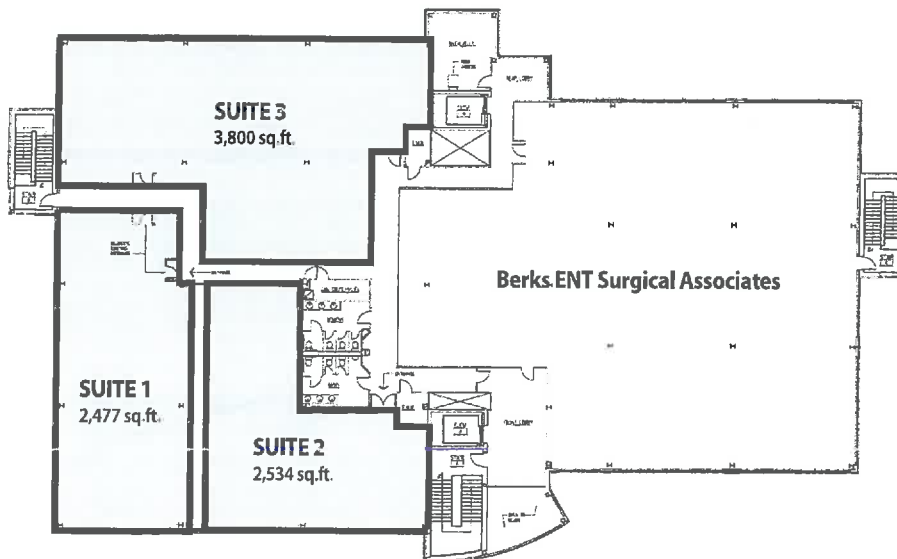
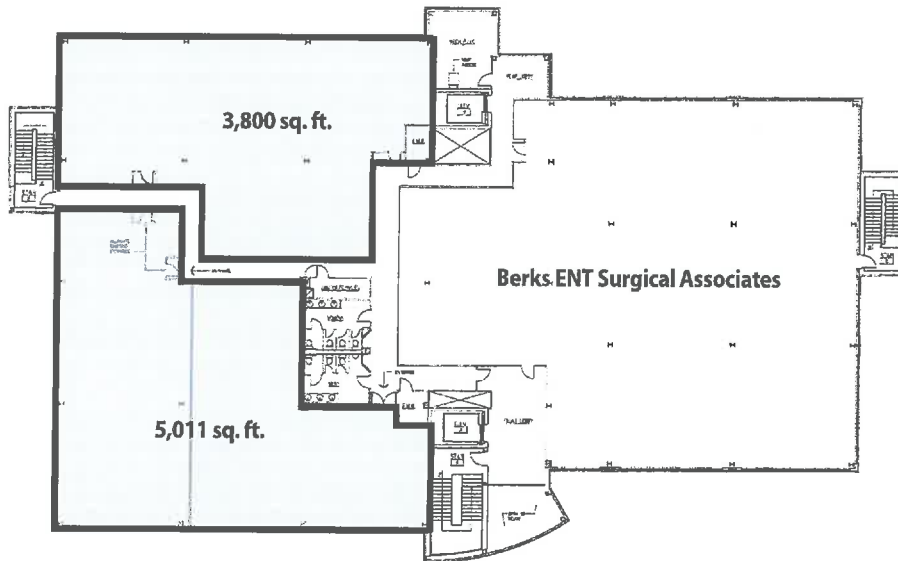
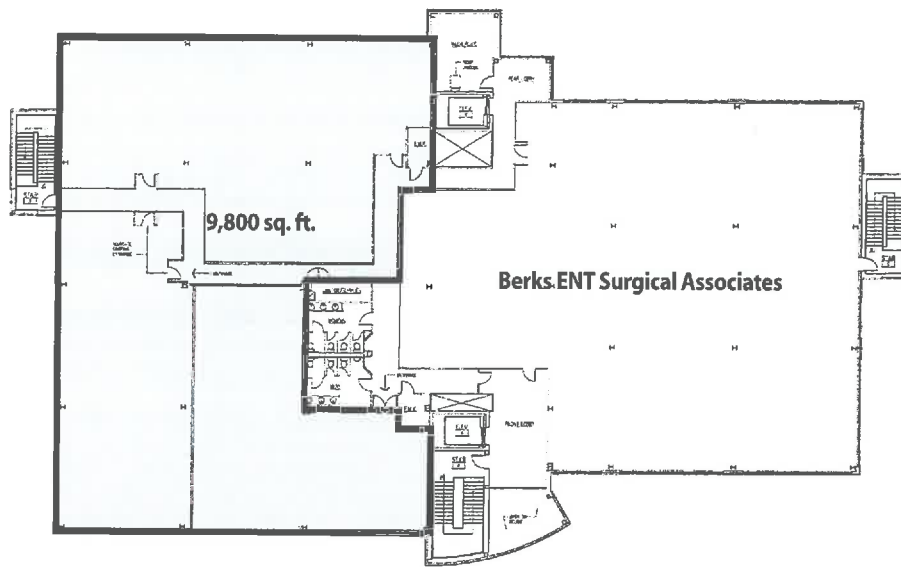
Phone: 610-378-1348

Cell: 610-413-1169

Fax: 610-685-2360

DaveOdonn@aol.com

GRANITE POINT 3RD FLOOR



Features:

- Class A Medical/Office Space
- Landmark Location
- High-Visibility
- Easy Access
- Ample Parking
- Elevator
- Lobby Attendant (8am-4pm)
- 24/7/365 Access
- Access to Emergency Power
- Medical Gasses Available
- Medical Vacuum Available
- Medical Waste Available
- 3,800 sq. ft. currently licensed by PA DoH as an endoscopy center
- Custom Fitout Available

Details:

- Built in 2003
- Ceiling Height: 10 ft.
- Fluorescent Lighting
- Flooring: Carpet and Vinyl Over Cement
- Air Conditioning and Heat by Zones
- Municipal Water and Sewer
- Sprinkler System
- Janitorial Service Available
- Alarm System Available

For leasing information, contact
David O'Donnell

Phone: 610-378-1348

Cell: 610-413-1169

Fax: 610-685-2360

DaveOdonn@aol.com