

Rare Freestanding Industrial Building

8921 SE HERBERT CT, CLACKAMAS, OR 97015



Joe Kappler
503.972.7294
joek@macadamforbes.com
Licensed in OR & WA

2 Centerpointe Drive, Suite 500 | Lake Oswego, OR 97035 | WWW.MACADAMFORBES.COM | 503.227.2500

All of the information contained herein was obtained either from the owner or other parties we consider reliable. We have no reason to doubt its accuracy, however we do not guarantee it.

FOR LEASE

 **MACADAM
FORBES**
COMMERCIAL REAL ESTATE SERVICES

FOR LEASE

8921 SE Herbert Ct, Clackamas, OR 97015



PROPERTY DESCRIPTION

Rare free-standing industrial building fronting SE 82nd Avenue in Clackamas, OR. This 10,500 SF building includes 1,500 SF of office space, 6 grade doors, secure storage area, and a large monument sign on SE 82nd Avenue. There is also a 560 SF storage building in the yard area. Property is zoned Business Park (PB) which allows for a variety of uses including service/repair, auto, contractors, recreational sport uses, and manufacturing uses. Existing automotive tire equipment available for lease/purchase.

Note: Listing broker has an ownership interest in the property

OFFERING SUMMARY

Lease Rate:	Call Broker for Rate
Available SF:	10,500 SF
Lot Size:	34,848 SF
Storage Building SF:	560 SF



Joe Kappler
503.972.7294
joek@macadamforbes.com
Licensed in OR & WA

All of the information contained herein was obtained either from the owner or other parties we consider reliable. We have no reason to doubt its accuracy, however we do not guarantee it.

MACADAMFORBES.COM | 503.227.2500

FOR LEASE

8921 SE Herbert Ct, Clackamas, OR 97015



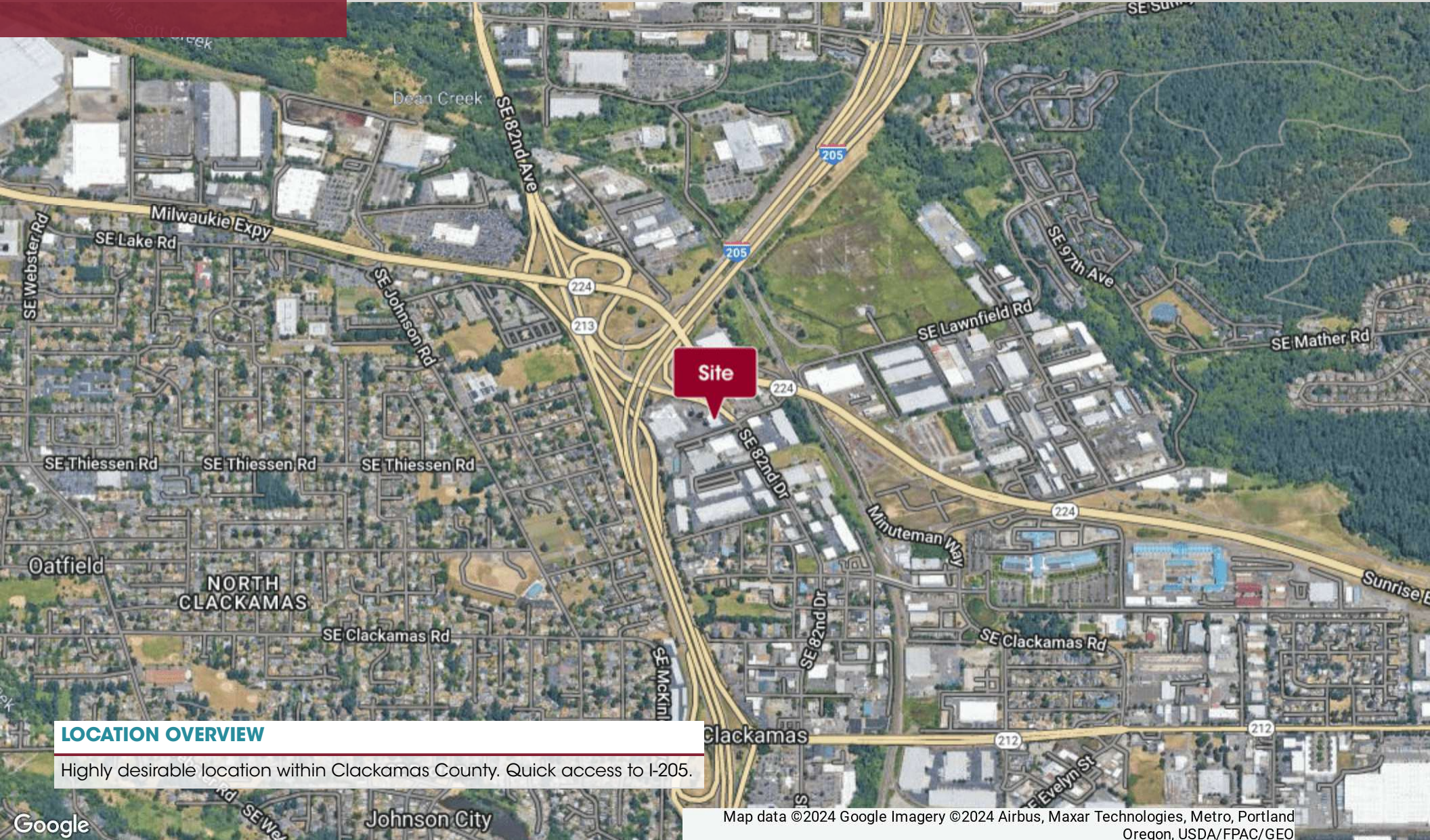
Joe Kappler
503.972.7294
joek@macadamforbes.com
Licensed in OR & WA

All of the information contained herein was obtained either from the owner or other parties we consider reliable. We have no reason to doubt its accuracy, however we do not guarantee it.

MACADAMFORBES.COM | 503.227.2500

FOR LEASE

8921 SE Herbert Ct, Clackamas, OR 97015



LOCATION OVERVIEW

Highly desirable location within Clackamas County. Quick access to I-205.

Map data ©2024 Google Imagery ©2024 Airbus, Maxar Technologies, Metro, Portland Oregon, USDA/FPAC/GEO



Joe Kappler
 503.972.7294
 joek@macadamforbes.com
 Licensed in OR & WA

All of the information contained herein was obtained either from the owner or other parties we consider reliable. We have no reason to doubt its accuracy, however we do not guarantee it.

MACADAMFORBES.COM | 503.227.2500