



PARK FALLS PLAZA

1252 AIRPORT PARK BLVD., UKIAH, CA 95482

101 N STATE STREET, | UKIAH, CA 95482 | WCOMMERCIALRE.COM

RETAIL PROPERTY FOR LEASE



FOR MORE INFORMATION:

TODD SCHAPMIRE

707.570.9855

TODD@WREALESTATE.NET

CALDRE #01414195

PARK FALLS PLAZA

1252 AIRPORT PARK BLVD., UKIAH, CA 95482

EXECUTIVE SUMMARY



OFFERING SUMMARY

Lease Rate: \$1.25 / SF

Lease Type: NNN

Available Size: 750 - 2,500 SF

Building Size: 29,885 SF

Year Built: 2005

Lot Size: 2.14 Acres

PROPERTY OVERVIEW

Be where the action is! Retail and/or office space in the Airport Business Park. Quality space built in 2005 that is close to Costco, Walmart, Friedman's Home Improvement, Staple's, Hampton Inn, Comfort Inn, Applebee's, Starbuck's, Sear's, Tractor Supply, Ken Fowler Auto Center, Food Maxx, Les Schwab Tire Center, and so much more!

LOCATION OVERVIEW

Ukiah is the Mendocino County Seat and the Economic Hub of all Mendocino County and parts of Lake, Humboldt, and Northern Sonoma County.

SPACES

SPACE SIZE

Park Falls Plaza, #A-3-4	2,500 SF
Park Falls Plaza, #B-7	1,385 SF
Park Falls Plaza, #C-6	750 SF

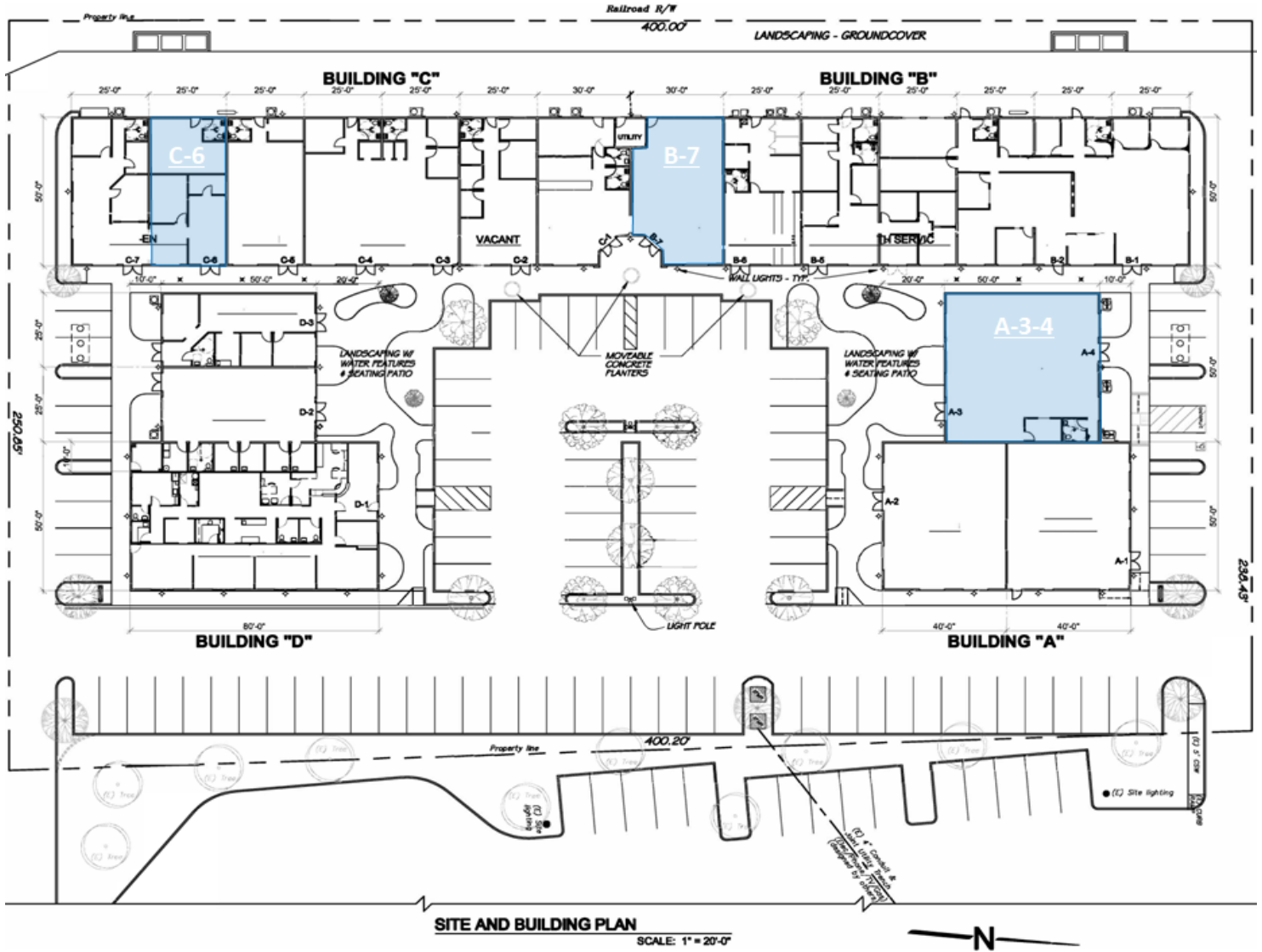


TODD SCHAPMIRE
707.570.9855
TODD@WREALESTATE.NET
CALDRE #01414195

PARK FALLS PLAZA

1252 AIRPORT PARK BLVD., UKIAH, CA 95482

SITE PLAN



Floor Plan is not exact. Any modifications above are an estimate. Tenant is advised to investigate and obtain professional inspections to provide exact measurements.



TODD SCHAPMIRE
707.570.9855
TODD@WREALESTATE.NET
CALDRE #01414195

PARK FALLS PLAZA

1252 AIRPORT PARK BLVD., UKIAH, CA 95482

LOCATION MAP

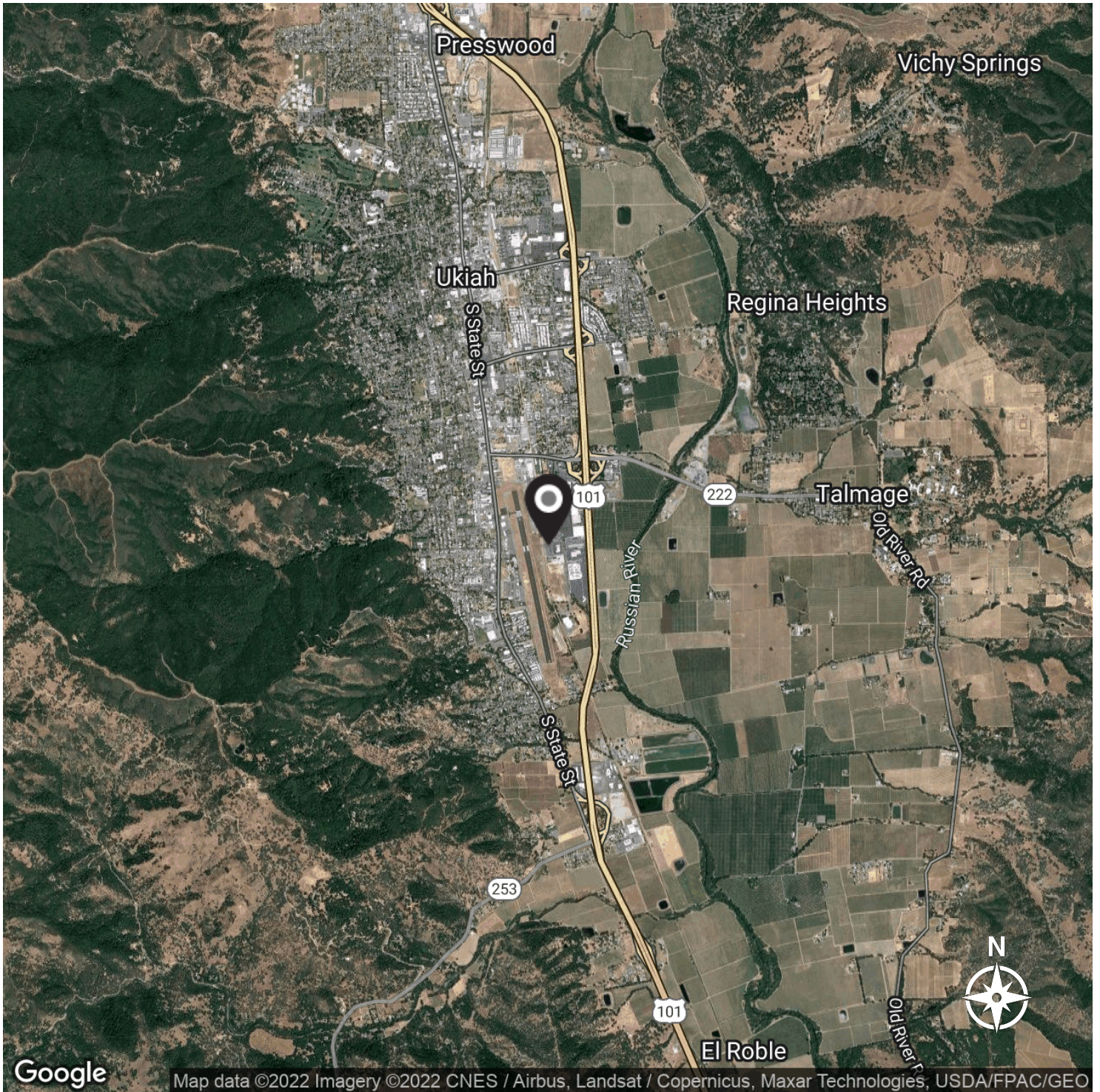


TODD SCHAPMIRE
707.570.9855
TODD@WREALESTATE.NET
CALDRE #01414195

PARK FALLS PLAZA

1252 AIRPORT PARK BLVD., UKIAH, CA 95482

AREA MAP



Google

Map data ©2022 Imagery ©2022 CNES / Airbus, Landsat / Copernicus, Maxar Technologies, USDA/FPAC/GEO



TODD SCHAPMIRE
707.570.9855
TODD@WREALESTATE.NET
CALDRE #01414195

PARK FALLS PLAZA

1252 AIRPORT PARK BLVD., UKIAH, CA 95482

PHOTOS



TODD SCHAPMIRE
707.570.9855
TODD@WREALESTATE.NET
CALDRE #01414195

PARK FALLS PLAZA

1252 AIRPORT PARK BLVD., UKIAH, CA 95482

PHOTOS



TODD SCHAPMIRE
707.570.9855
TODD@WREALESTATE.NET
CALDRE #01414195

PARK FALLS PLAZA

1252 AIRPORT PARK BLVD., UKIAH, CA 95482

PHOTOS



TODD SCHAPMIRE
707.570.9855
TODD@WREALESTATE.NET
CALDRE #01414195

PARK FALLS PLAZA

1252 AIRPORT PARK BLVD., UKIAH, CA 95482

REGIONAL MAP



TODD SCHAPMIRE
707.570.9855
TODD@WREALESTATE.NET
CALDRE #01414195

PARK FALLS PLAZA

1252 AIRPORT PARK BLVD., UKIAH, CA 95482

AERIAL MAP



Google

Map data ©2022 Imagery ©2022 CNES / Airbus, Maxar Technologies, USDA/FPAC/GEO

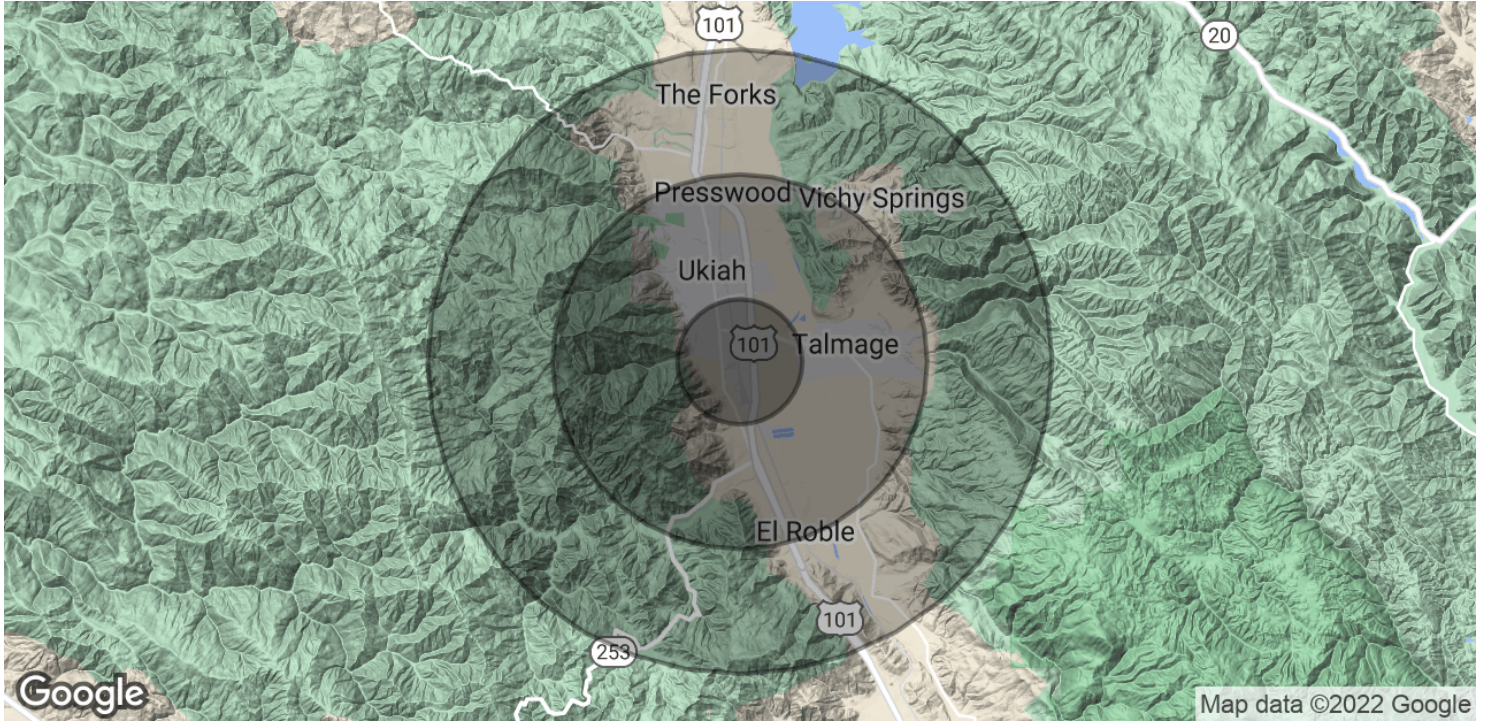


TODD SCHAPMIRE
707.570.9855
TODD@WREALESTATE.NET
CALDRE #01414195

PARK FALLS PLAZA

1252 AIRPORT PARK BLVD., UKIAH, CA 95482

DEMOGRAPHICS MAP & REPORT



POPULATION	1 MILE	3 MILES	5 MILES
Total Population	5,922	20,936	25,812
Average age	33.2	33.9	34.7
Average age (Male)	29.3	32.8	33.6
Average age (Female)	40.2	36.5	37.0

HOUSEHOLDS & INCOME	1 MILE	3 MILES	5 MILES
Total households	2,375	7,949	9,722
# of persons per HH	2.5	2.6	2.7
Average HH income	\$41,502	\$51,360	\$54,080
Average house value	\$296,007	\$293,733	\$293,808

* Demographic data derived from 2020 ACS - US Census



TODD SCHAPMIRE
707.570.9855
TODD@WREALESTATE.NET
CALDRE #01414195